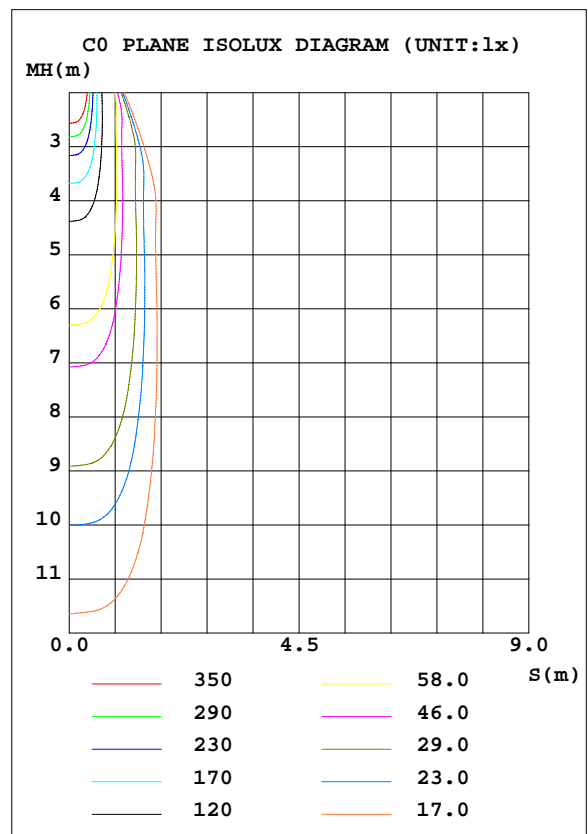
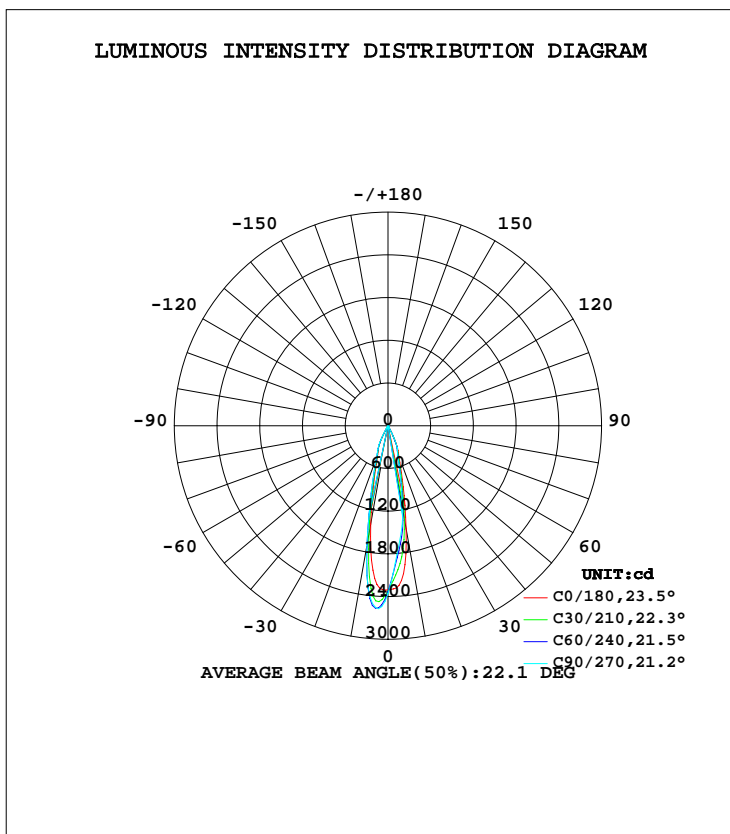


## LUMINAIRE PHOTOMETRIC TEST REPORT

NAME: Dot06-s-3000K-RA90-6W-20D.	TYPE:	WEIGHT:
DIM.:	SPEC.:	SERIAL No.:
MFR.: 0 Avenue Lighting	SUR.:	PROTECTION ANGLE:

DATA OF LAMP		PHOTOMETRIC DATA			
MODEL	ML8006-BLK	Imax(cd)	2574	S/MH(C0/180)	0.41
NOMINAL POWER(W)	6	LOR(%)	100.0	S/MH(C90/270)	0.34
RATED VOLTAGE(V)	24	TOTAL FLUX(lm)	521.44	η UP, DN(C0-180)	0.2, 45.1
NOMINAL FLUX(lm)	521.439	CIE CLASS	DIRECT	η UP, DN(C180-360)	0.2, 54.6
LAMPS INSIDE	1	η up(%)	0.4	CIBSE SHR NOM	0.00
TEST VOLTAGE(V)	24	η down(%)	99.6	CIBSE SHR MAX	1.00



C Range: 0 - 360DEG  
C Interval: 10.0DEG  
Test Speed: HIGH  
Temperature:25.3DEG  
Operators:0  
Test Date:2022-05-03

γ Range: 0 - 180DEG  
γ Interval: 1.0DEG  
Test System:EVERFINE GO-2000B\_V1 SYSTEM V2.0.262  
Humidity:65.0%  
Test Distance:7.100m [K=1.0000]  
Remarks:

**ZONAL FLUX DIAGRAM**

ZONAL FLUX DIAGRAM:

γ	C0	C45	C90	C135	C180	C225	C270	C315	γ	Φ zone	Φ total	lum, lamp
10	1472	1259	1186	1251	1405	1628	1709	1626	0- 10	182.3	182.3	35,35
20	442.4	402.1	390.1	404.8	425.9	451.8	474.1	463.3	10- 20	215.8	398.1	76.3,76.3
30	42.79	31.19	31.98	42.00	52.53	67.07	56.76	49.95	20- 30	111.5	509.6	97.7,97.7
40	3.410	3.398	3.107	3.498	3.290	3.277	3.580	3.539	30- 40	7.922	517.5	99.2,99.2
50	1.126	0.8900	1.258	1.225	1.003	1.208	1.026	0.9507	40- 50	1.669	519.2	99.6,99.6
60	0	0	0	0.0001	0	0	0	0	50- 60	0.3662	519.5	99.6,99.6
70	0	0	0	0	0	0	0	0	60- 70	0.0000	519.5	99.6,99.6
80	0	0	0	0	0	0	0	0	70- 80	0	519.5	99.6,99.6
90	0	0	0	0	0	0	0	0	80- 90	0	519.5	99.6,99.6
100	0	0	0	0	0	0	0	0	90-100	0	519.5	99.6,99.6
110	0	0	0	0	0	0	0	0	100-110	0	519.5	99.6,99.6
120	0	0	0	0	0	0	0	0	110-120	0	519.5	99.6,99.6
130	0	0	0	0	0	0	0	0	120-130	0	519.5	99.6,99.6
140	0.0940	0.1510	0.1798	0.1368	0.1563	0.1039	0.0752	0.1157	130-140	0.0176	519.5	99.6,99.6
150	0.8247	0.9415	1.002	0.9296	0.8601	0.7294	0.6696	0.7388	140-150	0.2579	519.8	99.7,99.7
160	2.061	2.199	2.271	2.199	2.035	1.867	1.802	1.878	150-160	0.6444	520.4	99.8,99.8
170	2.982	2.999	3.016	2.978	2.941	2.850	2.826	2.879	160-170	0.7081	521.1	99.9,99.9
180	3.214	3.169	3.181	3.207	3.218	3.171	3.176	3.204	170-180	0.2910	521.4	100,100
DEG	LUMINOUS INTENSITY:cd									UNIT:lm		

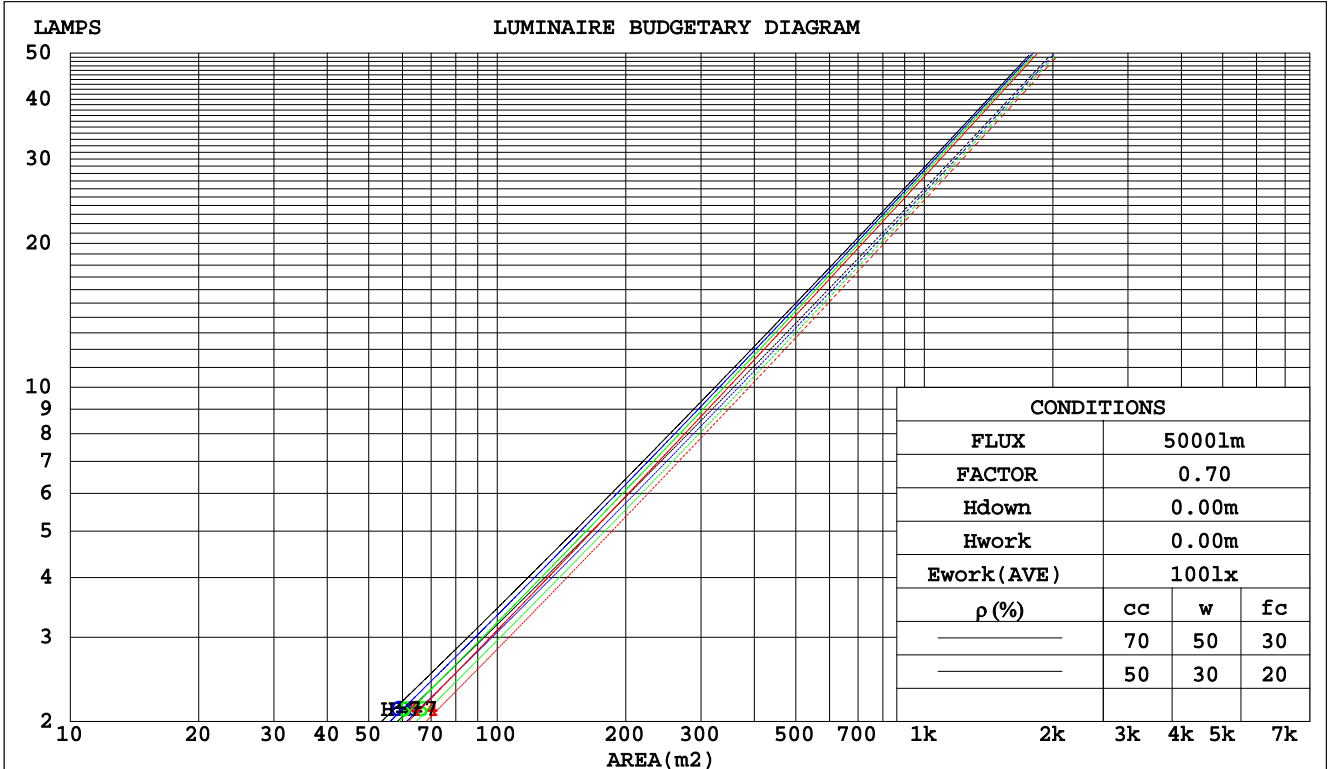
C Range: 0 - 360DEG  
C Interval: 10.0DEG  
Test Speed: HIGH  
Temperature:25.3DEG  
Operators:0  
Test Date:2022-05-03

γ Range: 0 - 180DEG  
γ Interval: 1.0DEG  
Test System:EVERFINE GO-2000B\_V1 SYSTEM V2.0.262  
Humidity:65.0%  
Test Distance:7.100m [K=1.0000]  
Remarks:

**CU AND LUMINAIRE BUDGETARY ESTIMATE DIAGRAM**

NAME: Dot06-s-3000K-RA90-6W-20D.	TYPE:	WEIGHT:
DIM.:	SPEC.:	SERIAL No.:
MFR.: 0	SUR.:	PROTECTION ANGLE:

pcc	80%			70%			50%			30%			10%			0
	50%	30%	10%	50%	30%	10%	50%	30%	10%	50%	30%	10%	50%	30%	10%	0
pw																0
pfc	20%			20%			20%			20%			20%			0
RCR	RCR:Room Cavity Ratio      Coefficients of Utilization(CU)															
0.0	1.19	1.19	1.19	1.16	1.16	1.16	1.11	1.11	1.11	1.06	1.06	1.06	1.02	1.02	1.02	.00
1.0	1.13	1.11	1.09	1.11	1.09	1.07	1.07	1.05	1.04	1.03	1.02	1.01	.99	.99	.98	.96
2.0	1.08	1.05	1.02	1.06	1.03	1.01	1.03	1.01	.99	.00	.98	.97	.97	.96	.95	.93
3.0	1.03	.99	.97	1.02	.98	.96	.99	.96	.94	.97	.95	.93	.95	.93	.91	.90
4.0	.99	.95	.92	.98	.94	.92	.96	.93	.90	.94	.91	.89	.92	.90	.88	.87
5.0	.95	.91	.88	.94	.91	.88	.93	.90	.87	.91	.89	.86	.90	.88	.86	.84
6.0	.92	.88	.85	.91	.87	.85	.90	.87	.84	.89	.86	.84	.88	.85	.83	.82
7.0	.89	.85	.82	.88	.85	.82	.87	.84	.81	.86	.83	.81	.85	.83	.81	.80
8.0	.86	.82	.79	.86	.82	.79	.85	.81	.79	.84	.81	.79	.83	.80	.78	.77
9.0	.84	.80	.77	.83	.79	.77	.82	.79	.77	.82	.79	.76	.81	.78	.76	.75
10.0	.81	.77	.75	.81	.77	.75	.80	.77	.74	.80	.76	.74	.79	.76	.74	.73



C Range: 0 - 360DEG  
C Interval: 10.0DEG  
Test Speed: HIGH  
Temperature: 25.3DEG  
Operators: 0  
Test Date: 2022-05-03

γ Range: 0 - 180DEG  
γ Interval: 1.0DEG  
Test System: EVERFINE GO-2000B\_V1 SYSTEM V2.0.262  
Humidity: 65.0%  
Test Distance: 7.100m [K=1.0000]  
Remarks:

WEC AND CCEC

NAME: Dot06-s-3000K-RA90-6W-20D.	TYPE:	WEIGHT:
DIM.:	SPEC.:	SERIAL No.:
MFR.: 0	SUR.:	PROTECTION ANGLE:

ρcc	80%			70%			50%			30%			10%			0
ρw	50%	30%	10%	50%	30%	10%	50%	30%	10%	50%	30%	10%	50%	30%	10%	0
ρfc	20%			20%			20%			20%			20%			0
RCR	RCR:Room Cavity Ratio						Wall Exitance Coefficients(WEC)									
0.0																
1.0	.136	.078	.025	.130	.074	.023	.117	.067	.021	.105	.061	.020	.095	.055	.018	
2.0	.126	.069	.021	.121	.066	.020	.110	.061	.019	.101	.057	.018	.092	.052	.016	
3.0	.118	.063	.019	.113	.061	.018	.104	.057	.017	.096	.053	.016	.089	.049	.015	
4.0	.110	.057	.017	.107	.056	.016	.099	.053	.016	.092	.050	.015	.086	.047	.014	
5.0	.104	.053	.015	.101	.052	.015	.095	.049	.014	.089	.047	.014	.083	.044	.013	
6.0	.099	.049	.014	.096	.048	.014	.090	.046	.013	.085	.044	.013	.081	.042	.013	
7.0	.094	.046	.013	.091	.046	.013	.087	.044	.013	.082	.042	.012	.078	.041	.012	
8.0	.090	.044	.012	.087	.043	.012	.083	.042	.012	.079	.040	.012	.076	.039	.011	
9.0	.086	.041	.012	.084	.041	.011	.080	.040	.011	.077	.038	.011	.073	.037	.011	
10.0	.082	.039	.011	.080	.039	.011	.077	.038	.011	.074	.037	.010	.071	.036	.010	

ρcc	80%			70%			50%			30%			10%			0
ρw	50%	30%	10%	50%	30%	10%	50%	30%	10%	50%	30%	10%	50%	30%	10%	0
ρfc	20%			20%			20%			20%			20%			0
RCR	RCR:Room Cavity Ratio						Ceiling Cavity Exitance Coefficients(CCEC)									
0.0	.193	.193	.193	.165	.165	.165	.113	.113	.113	.065	.065	.065	.021	.021	.021	
1.0	.171	.160	.151	.146	.138	.130	.100	.095	.090	.058	.055	.052	.018	.018	.017	
2.0	.153	.136	.121	.131	.117	.105	.090	.081	.073	.052	.047	.043	.017	.015	.014	
3.0	.138	.116	.099	.118	.100	.086	.081	.070	.060	.047	.041	.035	.015	.013	.012	
4.0	.126	.101	.082	.108	.087	.071	.074	.061	.050	.043	.036	.030	.014	.012	.010	
5.0	.115	.088	.069	.099	.077	.060	.068	.053	.042	.039	.031	.025	.013	.010	.008	
6.0	.106	.078	.059	.091	.068	.051	.063	.048	.036	.037	.028	.021	.012	.009	.007	
7.0	.099	.070	.050	.085	.061	.044	.059	.043	.031	.034	.025	.019	.011	.008	.006	
8.0	.092	.064	.044	.079	.055	.038	.055	.039	.027	.032	.023	.016	.010	.007	.005	
9.0	.087	.058	.039	.075	.050	.034	.052	.035	.024	.030	.021	.014	.010	.007	.005	
10.0	.082	.053	.034	.070	.046	.030	.049	.032	.021	.029	.019	.013	.009	.006	.004	

C Range: 0 - 360DEG  
 C Interval: 10.0DEG  
 Test Speed: HIGH  
 Temperature: 25.3DEG  
 Operators: 0  
 Test Date: 2022-05-03

γ Range: 0 - 180DEG  
 γ Interval: 1.0DEG  
 Test System: EVERFINE GO-2000B\_V1 SYSTEM V2.0.262  
 Humidity: 65.0%  
 Test Distance: 7.100m [K=1.0000]  
 Remarks:

Uncorrected UGR Table

NAME: Dot06-s-3000K-RA90-6W-20D.					TYPE:					WEIGHT:				
DIM.:					SPEC.:					SERIAL No.:				
MFR.: 0					SUR.:					PROTECTION ANGLE:				
ceiling/cavity	0.7	0.7	0.5	0.5	0.3	0.7	0.7	0.5	0.5	0.3				
walls	0.5	0.3	0.5	0.3	0.3	0.5	0.3	0.5	0.3	0.3				
working plane	0.2	0.2	0.2	0.2	0.2	0.2	0.2	0.2	0.2	0.2				
Room dimensions	Viewed crosswise					Viewed endwise								
x = 2H y = 2H	-13.4	-12.7	-13.2	-12.6	-12.4	-13.9	-13.2	-13.7	-13.1	-12.9				
3H	-13.5	-12.9	-13.3	-12.7	-12.5	-14.0	-13.4	-13.8	-13.2	-13.0				
4H	-13.6	-13.0	-13.3	-12.8	-12.6	-14.1	-13.5	-13.8	-13.3	-13.1				
6H	-13.7	-13.1	-13.4	-12.9	-12.7	-14.2	-13.6	-13.9	-13.4	-13.2				
8H	-13.7	-13.2	-13.4	-13.0	-12.7	-14.2	-13.7	-13.9	-13.5	-13.2				
12H	-13.8	-13.3	-13.5	-13.0	-12.7	-14.3	-13.8	-14.0	-13.5	-13.2				
4H 2H	-13.6	-13.0	-13.3	-12.8	-12.6	-14.1	-13.5	-13.8	-13.3	-13.1				
3H	-13.8	-13.3	-13.5	-13.0	-12.7	-14.3	-13.8	-14.0	-13.5	-13.2				
4H	-13.9	-13.4	-13.5	-13.1	-12.8	-14.4	-13.9	-14.0	-13.6	-13.3				
6H	-14.0	-13.6	-13.6	-13.2	-12.9	-14.5	-14.1	-14.1	-13.7	-13.4				
8H	-14.0	-13.6	-13.6	-13.3	-12.9	-14.5	-14.1	-14.1	-13.8	-13.4				
12H	-14.1	-13.7	-13.7	-13.4	-13.0	-14.6	-14.2	-14.2	-13.9	-13.5				
8H 4H	-14.0	-13.6	-13.6	-13.3	-12.9	-14.5	-14.1	-14.1	-13.8	-13.4				
6H	-14.1	-13.8	-13.7	-13.4	-13.0	-14.6	-14.3	-14.2	-13.9	-13.5				
8H	-14.2	-13.9	-13.8	-13.5	-13.1	-14.7	-14.4	-14.3	-14.0	-13.6				
12H	-14.3	-14.0	-13.8	-13.6	-13.1	-14.8	-14.5	-14.3	-14.1	-13.6				
12H 4H	-14.1	-13.7	-13.7	-13.4	-13.0	-14.6	-14.2	-14.2	-13.9	-13.5				
6H	-14.2	-13.9	-13.8	-13.5	-13.1	-14.7	-14.4	-14.3	-14.0	-13.6				
8H	-14.3	-14.0	-13.8	-13.6	-13.1	-14.8	-14.5	-14.3	-14.1	-13.6				
Variations with the observer position at spacings:														
S = 1.0H	+ 2.5 / -42.4					+ 2.4 / -19.2								
1.5H	+ 3.3 / -10.3					+ 3.0 / - 6.7								
2.0H	+ 6.5 / - 1.5					+ 5.7 / - 1.5								

CIE Pub.117 Corrected 521.4 lm Total Lamp Luminous Flux. (8log(F/F0) = -2.3)

C Range: 0 - 360DEG  
C Interval: 10.0DEG  
Test Speed: HIGH  
Temperature: 25.3DEG  
Operators: 0  
Test Date: 2022-05-03

γ Range: 0 - 180DEG  
γ Interval: 1.0DEG  
Test System: EVERFINE GO-2000B\_V1 SYSTEM V2.0.262  
Humidity: 65.0%  
Test Distance: 7.100m [K=1.0000]  
Remarks:

UTILIZATION FACTORS TABLE

NAME: Dot06-s-3000K-RA90-6W-20D.	TYPE:	WEIGHT:
DIM.:	SPEC.:	SERIAL No.:
MFR.: 0	SUR.:	PROTECTION ANGLE:

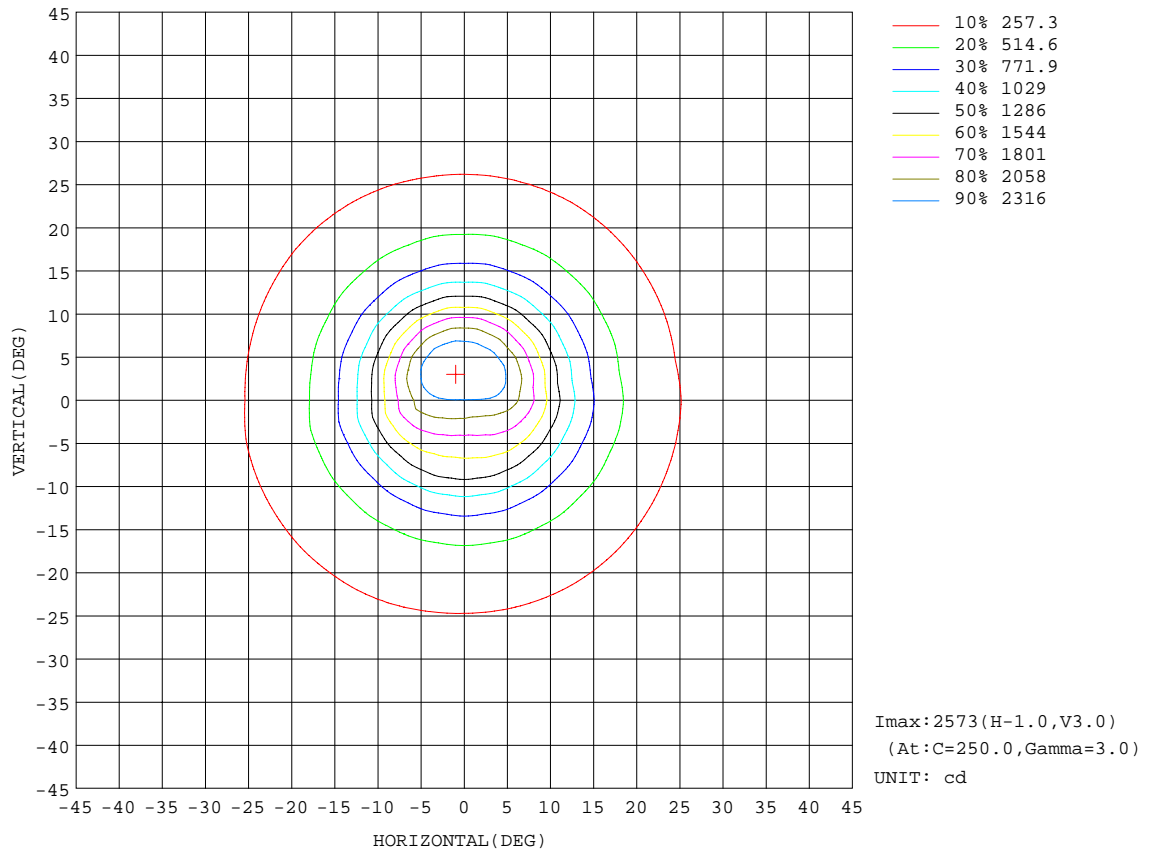
REFLECTANCE										
Ceiling	0.8	0.8	0.8	0.7	0.7	0.7	0.5	0.5	0.5	0
Walls	0.7	0.5	0.3	0.7	0.5	0.3	0.7	0.5	0.3	0
Working plane	0.2	0.2	0.2	0.2	0.2	0.2	0.2	0.2	0.2	0
ROOM INDEX	UTILIZATION FACTORS(PERCENT) k(RI) x RCR = 5									
k = 0.60	91	85	82	91	85	82	90	85	82	79
0.80	98	93	90	97	93	89	96	92	89	86
1.00	102	97	94	101	96	93	99	96	93	89
1.25	105	101	98	104	100	97	102	99	96	92
1.50	108	103	101	106	103	100	104	101	99	95
2.00	110	106	103	108	105	102	106	103	101	96
2.50	111	108	105	110	107	104	107	104	102	97
3.00	113	110	107	111	108	106	107	105	104	97
4.00	114	112	110	112	110	109	109	107	106	99
5.00	116	114	112	114	112	110	110	108	107	100
ROOM INDEX	UF(total)									Direct
According to DIN EN 13032-2 2004			Suspended				SHRNOM = 1.25			

C Range: 0 - 360DEG  
C Interval: 10.0DEG  
Test Speed: HIGH  
Temperature: 25.3DEG  
Operators: 0  
Test Date: 2022-05-03

γ Range: 0 - 180DEG  
γ Interval: 1.0DEG  
Test System: EVERFINE GO-2000B\_V1 SYSTEM V2.0.262  
Humidity: 65.0%  
Test Distance: 7.100m [K=1.0000]  
Remarks:

ISOCANDELA DIAGRAM

NAME: Dot06-s-3000K-RA90-6W-20D.	TYPE:	WEIGHT:
DIM.:	SPEC.:	SERIAL No.:
MFR.: 0	SUR.:	PROTECTION ANGLE:

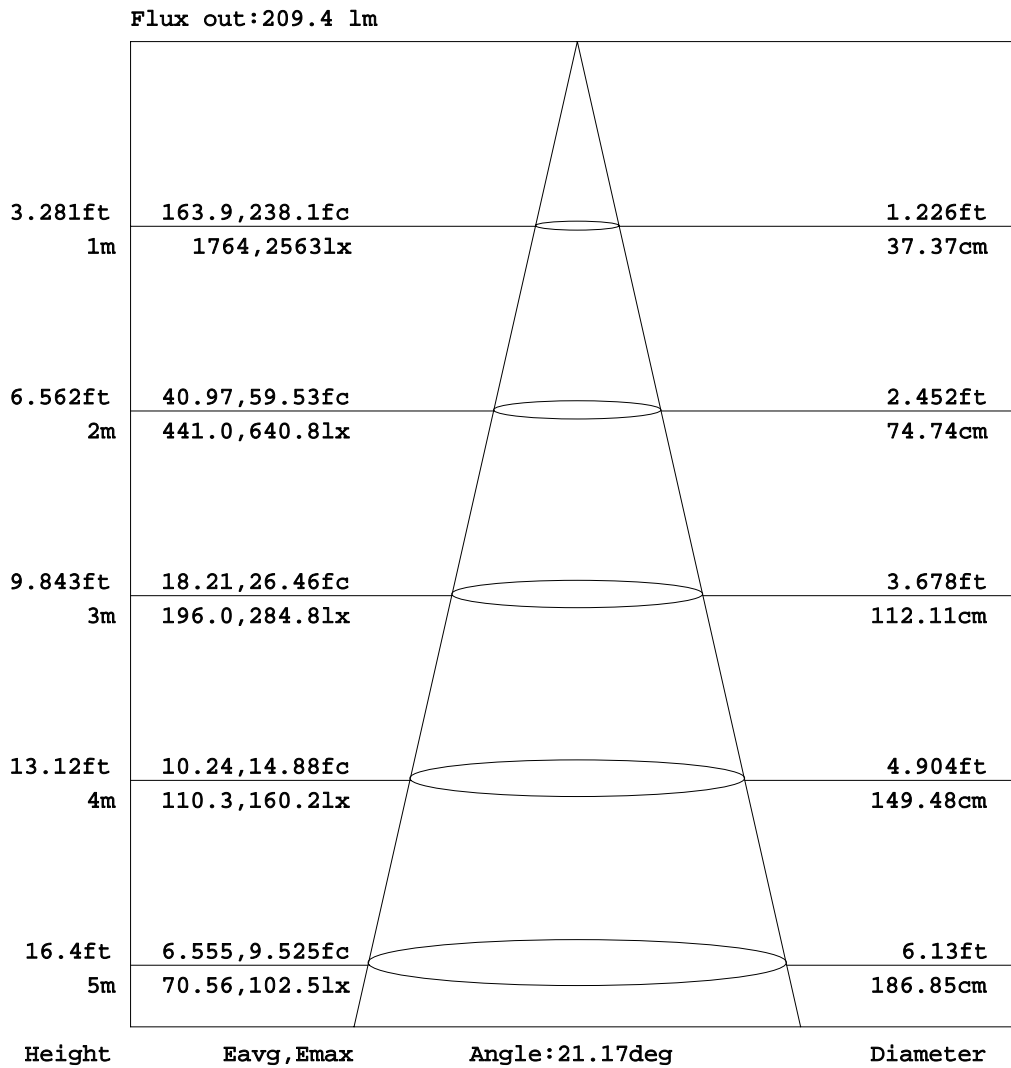


C Range: 0 - 360DEG  
C Interval: 10.0DEG  
Test Speed: HIGH  
Temperature: 25.3DEG  
Operators: 0  
Test Date: 2022-05-03

$\gamma$  Range: 0 - 180DEG  
 $\gamma$  Interval: 1.0DEG  
Test System: EVERFINE GO-2000B\_V1 SYSTEM V2.0.262  
Humidity: 65.0%  
Test Distance: 7.100m [K=1.0000]  
Remarks:

AAI Figure

NAME: Dot06-s-3000K-RA90-6W-20D.	TYPE:	WEIGHT:
DIM.:	SPEC.:	SERIAL No.:
MFR.: 0	SUR.:	PROTECTION ANGLE:



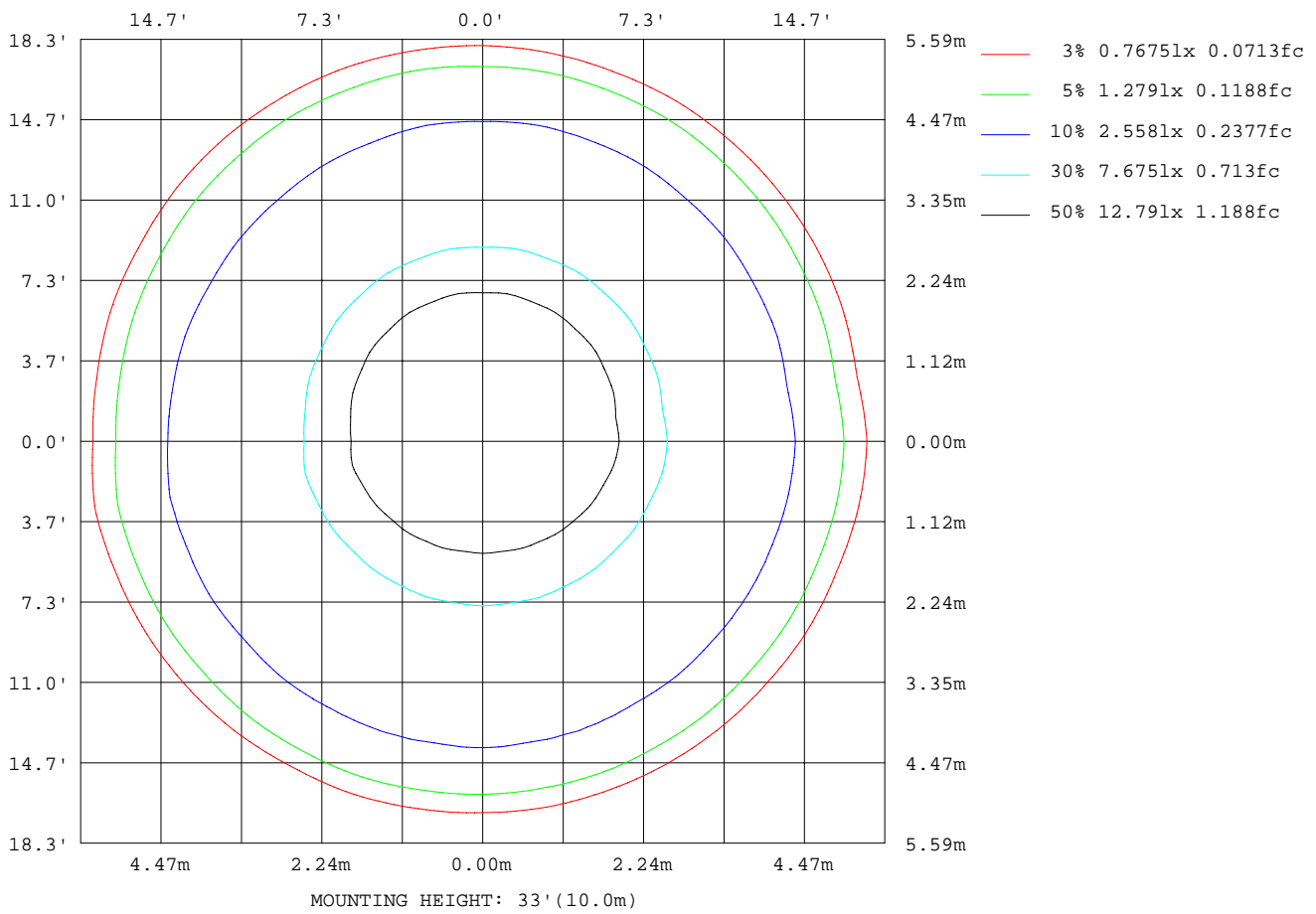
Note:The Curves indicate the illuminated area and the average illumination when the luminaire is at different distance.

C Range: 0 - 360DEG  
C Interval: 10.0DEG  
Test Speed: HIGH  
Temperature:25.3DEG  
Operators:0  
Test Date:2022-05-03

γ Range: 0 - 180DEG  
γ Interval: 1.0DEG  
Test System:EVERFINE GO-2000B\_V1 SYSTEM V2.0.262  
Humidity:65.0%  
Test Distance:7.100m [K=1.0000]  
Remarks:

ISOLUX DIAGRAM

NAME: Dot06-s-3000K-RA90-6W-20D.	TYPE:	WEIGHT:
DIM.:	SPEC.:	SERIAL No.:
MFR.: 0	SUR.:	PROTECTION ANGLE:



C Range: 0 - 360DEG  
 C Interval: 10.0DEG  
 Test Speed: HIGH  
 Temperature: 25.3DEG  
 Operators: 0  
 Test Date: 2022-05-03

$\gamma$  Range: 0 - 180DEG  
 $\gamma$  Interval: 1.0DEG  
 Test System: EVERFINE GO-2000B\_V1 SYSTEM V2.0.262  
 Humidity: 65.0%  
 Test Distance: 7.100m [K=1.0000]  
 Remarks:

**Average Luminance Table(CIBSE)**

NAME: Dot06-s-3000K-RA90-6W-20D.	TYPE:	WEIGHT:
DIM.:	SPEC.:	SERIAL No.:
MFR.: 0	SUR.:	PROTECTION ANGLE:

Parameter description for average Luminance	Symbol	Value	Unit
Luminance in Azimuth Plane	Bc	refer Table 2	cd/sq.m.
Intensity at angle Gamma in given azimuth plane	I	from data	cd/klm
Number of lamps	N	1	
Output of each lamp(initial lumens as specified)	F	521.439	lm
Multiplying factor	K	1	
Luminous area in horizontal plane used in calculations	A	0.1	sq.m.
Angle to the downward vertical from light centre	Gamma	from data	deg

Table 1. Calculation parameters for determination of CIBSE LG3:1996 Average Luminance

G deg	C plane(deg)																		
	0	10	20	30	40	50	60	70	80	90	100	110	120	130	140	150	160	170	180
55	8	6	5	4	6	5	8	9	10	10	9	8	8	7	8	8	8	7	5
60	0	0	0	0	0	0	0	0	0	0	0	0	0	0	0	0	0	0	0
65	0	0	0	0	0	0	0	0	0	0	0	0	0	0	0	0	0	0	0
70	0	0	0	0	0	0	0	0	0	0	0	0	0	0	0	0	0	0	0
75	0	0	0	0	0	0	0	0	0	0	0	0	0	0	0	0	0	0	0
80	0	0	0	0	0	0	0	0	0	0	0	0	0	0	0	0	0	0	0
85	0	0	0	0	0	0	0	0	0	0	0	0	0	0	0	0	0	0	0

Table 2. Average Luminance(cd/sq.m.) for defined C plane,Gamma angle

CIBSE Category	Gamma (deg)	Average Luminance		Patch Luminance	
		maximum calculated	specified maximum	maximum measured	specified maximum
Category 1	55 to 90	10	200	---	500
Category 2	65 to 90	0	200	---	500
Category 3	75 to 90	0	200	---	500

Table 3. Tabulation of Average and Patch Luminance(cd/sq.m.) for defined CIBSE categories

No match

C Range: 0 - 360DEG  
C Interval: 10.0DEG  
Test Speed: HIGH  
Temperature:25.3DEG  
Operators:0  
Test Date:2022-05-03

γ Range: 0 - 180DEG  
γ Interval: 1.0DEG  
Test System:EVERFINE GO-2000B\_V1 SYSTEM V2.0.262  
Humidity:65.0%  
Test Distance:7.100m [K=1.0000]  
Remarks:

**Average Luminance Table(CIBSE)**

NAME: Dot06-s-3000K-RA90-6W-20D.	TYPE:	WEIGHT:
DIM.:	SPEC.:	SERIAL No.:
MFR.: 0	SUR.:	PROTECTION ANGLE:

Parameter description for average Luminance	Symbol	Value	Unit
Luminance in Azimuth Plane	Bc	refer Table 2	cd/sq.m.
Intensity at angle Gamma in given azimuth plane	I	from data	cd/klm
Number of lamps	N	1	
Output of each lamp(initial lumens as specified)	F	521.439	lm
Multiplying factor	K	1	
Luminous area in horizontal plane used in calculations	A	0.1	sq.m.
Angle to the downward vertical from light centre	Gamma	from data	deg

Table 1. Calculation parameters for determination of CIBSE LG3:2001 Average Luminance

G deg	C plane(deg)																		
	0	10	20	30	40	50	60	70	80	90	100	110	120	130	140	150	160	170	180
55	8	6	5	4	6	5	8	9	10	10	9	8	8	7	8	8	8	7	5
60	0	0	0	0	0	0	0	0	0	0	0	0	0	0	0	0	0	0	0
65	0	0	0	0	0	0	0	0	0	0	0	0	0	0	0	0	0	0	0
70	0	0	0	0	0	0	0	0	0	0	0	0	0	0	0	0	0	0	0
75	0	0	0	0	0	0	0	0	0	0	0	0	0	0	0	0	0	0	0
80	0	0	0	0	0	0	0	0	0	0	0	0	0	0	0	0	0	0	0
85	0	0	0	0	0	0	0	0	0	0	0	0	0	0	0	0	0	0	0

Table 2. Average Luminance(cd/sq.m.) for defined C plane,Gamma angle

range (deg)	Maximum measured	Average Luminance(cd/sq.m)			
		Maximum limit for screen type & software category used			
		Type I,II screen Some neg.s'ware	Type I,II screen Only pos.s'ware	Type III screen Some neg.s'ware	Type III screen Only pos.s'ware
55 to 90	10	1000	1500	200	500
65 to 90	0	1000	1500	200	500

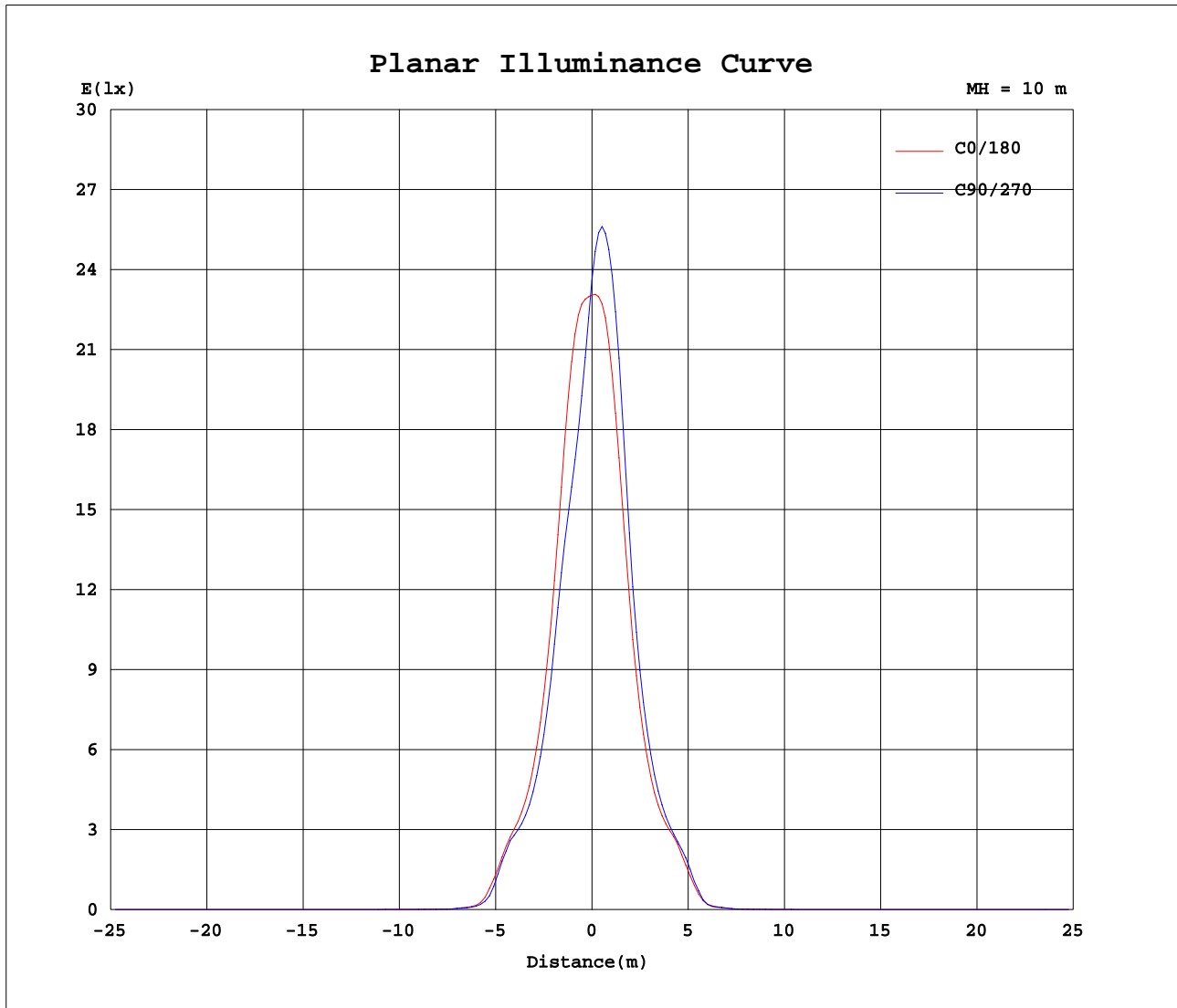
Table 3. Tabulation of average luminance(cd/sq.m.) and luminance limits

The luminaire satisfies the specified luminance criteria for  
Negative Software with Type I & II Screen(Good to Moderate treatment).

C Range: 0 - 360DEG  
C Interval: 10.0DEG  
Test Speed: HIGH  
Temperature:25.3DEG  
Operators:0  
Test Date:2022-05-03

γ Range: 0 - 180DEG  
γ Interval: 1.0DEG  
Test System:EVERFINE GO-2000B\_V1 SYSTEM V2.0.262  
Humidity:65.0%  
Test Distance:7.100m [K=1.0000]  
Remarks:

Planar Illuminance Curve



C Range: 0 - 360DEG  
 C Interval: 10.0DEG  
 Test Speed: HIGH  
 Temperature: 25.3DEG  
 Operators: 0  
 Test Date: 2022-05-03

$\gamma$  Range: 0 - 180DEG  
 $\gamma$  Interval: 1.0DEG  
 Test System: EVERFINE GO-2000B\_V1 SYSTEM V2.0.262  
 Humidity: 65.0%  
 Test Distance: 7.100m [K=1.0000]  
 Remarks:

LUMINOUS DISTRIBUTION INTENSITY DATA

NAME: Dot06-s-3000K-RA90-6W-20D.	TYPE:	WEIGHT:
DIM.:	SPEC.:	SERIAL No.:
MFR.: 0	SUR.:	PROTECTION ANGLE:

Table--1

UNIT: cd

C( DEG) γ (DEG)	0	10	20	30	40	50	60	70	80	90	100	110	120	130	140	150	160	170	180
0	2304	2308	2308	2319	2317	2333	2328	2346	2340	2358	2350	2365	2357	2368	2360	2365	2358	2356	2304
5	2183	2104	2013	1944	1869	1822	1766	1739	1707	1707	1703	1733	1759	1817	1868	1955	2034	2141	2152
10	1472	1428	1358	1325	1269	1248	1210	1202	1177	1186	1179	1205	1208	1243	1258	1313	1350	1423	1405
15	779	761	725	708	679	670	647	645	631	636	629	643	644	665	671	700	713	746	731
20	442	435	420	415	404	400	392	392	388	390	389	394	395	403	407	416	421	432	426
25	266	257	247	243	239	241	239	242	241	245	249	258	264	265	272	275	284	287	277
30	42.8	40.2	34.6	33.6	30.8	31.5	30.4	32.0	30.9	32.0	31.8	35.5	36.5	41.3	42.7	48.8	51.2	59.7	52.5
35	9.18	9.10	8.45	8.42	8.11	8.37	8.51	8.98	8.83	8.50	8.22	8.68	9.09	9.71	9.94	10.3	10.2	10.7	10.4
40	3.41	3.42	3.44	3.30	3.34	3.46	3.57	3.44	3.26	3.11	3.05	3.17	3.33	3.46	3.53	3.42	3.31	3.35	3.29
45	2.28	2.31	2.35	2.12	2.08	2.21	2.35	2.29	2.19	2.05	2.04	1.96	2.10	2.29	2.36	2.23	2.20	2.14	2.00
50	1.13	1.08	1.04	0.86	0.86	0.92	1.14	1.24	1.35	1.26	1.15	1.10	1.15	1.21	1.24	1.25	1.24	1.20	1.00
55	0.46	0.34	0.31	0.24	0.33	0.31	0.47	0.50	0.59	0.59	0.54	0.45	0.46	0.41	0.46	0.46	0.48	0.42	0.31
60	0.00	0.00	0.00	0.00	0.00	0.00	0.00	0.00	0.00	0.00	0.00	0.00	0.00	0.00	0.00	0.00	0.00	0.00	0.00
65	0.00	0.00	0.00	0.00	0.00	0.00	0.00	0.00	0.00	0.00	0.00	0.00	0.00	0.00	0.00	0.00	0.00	0.00	0.00
70	0.00	0.00	0.00	0.00	0.00	0.00	0.00	0.00	0.00	0.00	0.00	0.00	0.00	0.00	0.00	0.00	0.00	0.00	0.00
75	0.00	0.00	0.00	0.00	0.00	0.00	0.00	0.00	0.00	0.00	0.00	0.00	0.00	0.00	0.00	0.00	0.00	0.00	0.00
80	0.00	0.00	0.00	0.00	0.00	0.00	0.00	0.00	0.00	0.00	0.00	0.00	0.00	0.00	0.00	0.00	0.00	0.00	0.00
85	0.00	0.00	0.00	0.00	0.00	0.00	0.00	0.00	0.00	0.00	0.00	0.00	0.00	0.00	0.00	0.00	0.00	0.00	0.00
90	0.00	0.00	0.00	0.00	0.00	0.00	0.00	0.00	0.00	0.00	0.00	0.00	0.00	0.00	0.00	0.00	0.00	0.00	0.00
95	0.00	0.00	0.00	0.00	0.00	0.00	0.00	0.00	0.00	0.00	0.00	0.00	0.00	0.00	0.00	0.00	0.00	0.00	0.00
100	0.00	0.00	0.00	0.00	0.00	0.00	0.00	0.00	0.00	0.00	0.00	0.00	0.00	0.00	0.00	0.00	0.00	0.00	0.00
105	0.00	0.00	0.00	0.00	0.00	0.00	0.00	0.00	0.00	0.00	0.00	0.00	0.00	0.00	0.00	0.00	0.00	0.00	0.00
110	0.00	0.00	0.00	0.00	0.00	0.00	0.00	0.00	0.00	0.00	0.00	0.00	0.00	0.00	0.00	0.00	0.00	0.00	0.00
115	0.00	0.00	0.00	0.00	0.00	0.00	0.00	0.00	0.00	0.00	0.00	0.00	0.00	0.00	0.00	0.00	0.00	0.00	0.00
120	0.00	0.00	0.00	0.00	0.00	0.00	0.00	0.00	0.00	0.00	0.00	0.00	0.00	0.00	0.00	0.00	0.00	0.00	0.00
125	0.00	0.00	0.00	0.00	0.00	0.00	0.00	0.00	0.00	0.00	0.00	0.00	0.00	0.00	0.00	0.00	0.00	0.00	0.00
130	0.00	0.00	0.00	0.00	0.00	0.00	0.00	0.00	0.00	0.00	0.00	0.00	0.00	0.00	0.00	0.00	0.00	0.00	0.00
135	0.00	0.00	0.00	0.00	0.00	0.00	0.00	0.00	0.00	0.01	0.00	0.00	0.00	0.00	0.00	0.00	0.00	0.00	0.00
140	0.09	0.15	0.11	0.17	0.13	0.18	0.13	0.18	0.13	0.18	0.14	0.18	0.13	0.16	0.11	0.15	0.09	0.13	0.16
145	0.36	0.42	0.39	0.45	0.42	0.47	0.44	0.48	0.45	0.48	0.44	0.48	0.43	0.46	0.40	0.44	0.38	0.41	0.43
150	0.82	0.88	0.88	0.93	0.92	0.96	0.96	0.99	0.97	1.00	0.97	0.99	0.94	0.96	0.90	0.92	0.86	0.86	0.86
155	1.43	1.49	1.49	1.55	1.56	1.62	1.61	1.65	1.63	1.67	1.63	1.65	1.59	1.60	1.54	1.54	1.48	1.47	1.44
160	2.06	2.12	2.12	2.19	2.17	2.22	2.22	2.27	2.24	2.27	2.24	2.26	2.21	2.22	2.17	2.17	2.10	2.10	2.04
165	2.64	2.69	2.66	2.71	2.68	2.74	2.70	2.74	2.70	2.75	2.71	2.74	2.69	2.71	2.66	2.69	2.62	2.65	2.59
170	2.98	3.03	2.98	3.02	2.98	3.02	2.97	3.01	2.97	3.02	2.97	3.01	2.96	3.01	2.95	2.99	2.95	3.01	2.94
175	3.11	3.15	3.10	3.14	3.08	3.12	3.07	3.11	3.07	3.12	3.08	3.12	3.08	3.13	3.10	3.14	3.10	3.17	3.12
180	3.21	3.22	3.19	3.19	3.17	3.17	3.17	3.19	3.18	3.18	3.18	3.19	3.19	3.20	3.21	3.22	3.23	3.25	3.22

C Range: 0 - 360DEG  
C Interval: 10.0DEG  
Test Speed: HIGH  
Temperature: 25.3DEG  
Operators: 0  
Test Date: 2022-05-03

γ Range: 0 - 180DEG  
γ Interval: 1.0DEG  
Test System: EVERFINE GO-2000B\_V1 SYSTEM V2.0.262  
Humidity: 65.0%  
Test Distance: 7.100m [K=1.0000]  
Remarks:

LUMINOUS DISTRIBUTION INTENSITY DATA

NAME: Dot06-s-3000K-RA90-6W-20D.	TYPE:	WEIGHT:
DIM.:	SPEC.:	SERIAL No.:
MFR.: 0	SUR.:	PROTECTION ANGLE:

Table--2

UNIT: cd

C( DEG) γ (DEG)	190	200	210	220	230	240	250	260	270	280	290	300	310	320	330	340	350		
0	2308	2308	2319	2317	2333	2328	2346	2340	2358	2350	2365	2357	2368	2360	2365	2358	2356		
5	2238	2336	2405	2473	2510	2531	2524	2521	2504	2501	2485	2480	2454	2427	2373	2324	2247		
10	1442	1513	1546	1616	1640	1697	1700	1732	1709	1723	1684	1682	1633	1618	1555	1525	1453		
15	743	776	787	820	828	855	853	872	862	874	859	862	839	834	805	795	760		
20	427	436	437	450	453	466	467	477	474	479	473	474	464	463	451	447	433		
25	284	285	291	293	298	299	303	308	304	301	300	294	289	279	273	263	251		
30	55.2	62.3	62.9	68.4	65.7	67.4	62.4	62.5	56.8	57.0	52.9	53.9	50.0	49.9	45.6	44.1	38.2		
35	10.8	11.7	12.0	12.9	13.3	13.4	12.9	12.5	11.5	11.6	11.3	11.7	10.8	10.5	8.69	8.55	6.88		
40	3.30	3.24	3.21	3.23	3.33	3.42	3.65	3.68	3.58	3.62	3.75	3.81	3.67	3.41	3.35	3.37	3.25		
45	1.96	1.98	2.13	2.24	2.35	2.45	2.44	2.33	2.17	2.09	2.02	2.07	2.09	2.08	2.07	2.06	2.12		
50	1.01	1.04	1.12	1.21	1.21	1.28	1.19	1.05	1.03	0.89	0.78	0.82	0.96	0.94	0.93	0.88	0.96		
55	0.32	0.28	0.35	0.35	0.36	0.37	0.40	0.32	0.35	0.28	0.28	0.29	0.40	0.34	0.34	0.26	0.34		
60	0.00	0.00	0.00	0.00	0.00	0.00	0.00	0.00	0.00	0.00	0.00	0.00	0.00	0.00	0.00	0.00	0.00		
65	0.00	0.00	0.00	0.00	0.00	0.00	0.00	0.00	0.00	0.00	0.00	0.00	0.00	0.00	0.00	0.00	0.00		
70	0.00	0.00	0.00	0.00	0.00	0.00	0.00	0.00	0.00	0.00	0.00	0.00	0.00	0.00	0.00	0.00	0.00		
75	0.00	0.00	0.00	0.00	0.00	0.00	0.00	0.00	0.00	0.00	0.00	0.00	0.00	0.00	0.00	0.00	0.00		
80	0.00	0.00	0.00	0.00	0.00	0.00	0.00	0.00	0.00	0.00	0.00	0.00	0.00	0.00	0.00	0.00	0.00		
85	0.00	0.00	0.00	0.00	0.00	0.00	0.00	0.00	0.00	0.00	0.00	0.00	0.00	0.00	0.00	0.00	0.00		
90	0.00	0.00	0.00	0.00	0.00	0.00	0.00	0.00	0.00	0.00	0.00	0.00	0.00	0.00	0.00	0.00	0.00		
95	0.00	0.00	0.00	0.00	0.00	0.00	0.00	0.00	0.00	0.00	0.00	0.00	0.00	0.00	0.00	0.00	0.00		
100	0.00	0.00	0.00	0.00	0.00	0.00	0.00	0.00	0.00	0.00	0.00	0.00	0.00	0.00	0.00	0.00	0.00		
105	0.00	0.00	0.00	0.00	0.00	0.00	0.00	0.00	0.00	0.00	0.00	0.00	0.00	0.00	0.00	0.00	0.00		
110	0.00	0.00	0.00	0.00	0.00	0.00	0.00	0.00	0.00	0.00	0.00	0.00	0.00	0.00	0.00	0.00	0.00		
115	0.00	0.00	0.00	0.00	0.00	0.00	0.00	0.00	0.00	0.00	0.00	0.00	0.00	0.00	0.00	0.00	0.00		
120	0.00	0.00	0.00	0.00	0.00	0.00	0.00	0.00	0.00	0.00	0.00	0.00	0.00	0.00	0.00	0.00	0.00		
125	0.00	0.00	0.00	0.00	0.00	0.00	0.00	0.00	0.00	0.00	0.00	0.00	0.00	0.00	0.00	0.00	0.00		
130	0.00	0.00	0.00	0.00	0.00	0.00	0.00	0.00	0.00	0.00	0.00	0.00	0.00	0.00	0.00	0.00	0.00		
135	0.00	0.00	0.00	0.00	0.00	0.00	0.00	0.00	0.00	0.00	0.00	0.00	0.00	0.00	0.00	0.00	0.00		
140	0.11	0.15	0.09	0.13	0.08	0.12	0.08	0.12	0.08	0.13	0.09	0.13	0.09	0.14	0.10	0.16	0.13		
145	0.37	0.39	0.34	0.37	0.32	0.35	0.31	0.35	0.31	0.35	0.32	0.36	0.33	0.39	0.35	0.41	0.38		
150	0.80	0.81	0.74	0.76	0.70	0.72	0.68	0.71	0.67	0.71	0.69	0.73	0.71	0.77	0.75	0.82	0.81		
155	1.36	1.36	1.29	1.29	1.24	1.25	1.20	1.23	1.20	1.23	1.21	1.26	1.24	1.30	1.30	1.36	1.36		
160	1.96	1.96	1.89	1.89	1.84	1.86	1.82	1.84	1.80	1.84	1.82	1.86	1.85	1.91	1.90	1.96	1.97		
165	2.51	2.52	2.46	2.47	2.42	2.45	2.41	2.44	2.41	2.44	2.41	2.46	2.43	2.49	2.48	2.54	2.52		
170	2.88	2.91	2.84	2.87	2.83	2.87	2.82	2.88	2.83	2.87	2.84	2.88	2.85	2.91	2.87	2.93	2.91		
175	3.07	3.10	3.04	3.09	3.05	3.10	3.06	3.11	3.07	3.12	3.08	3.12	3.08	3.13	3.10	3.15	3.12		
180	3.20	3.21	3.18	3.18	3.17	3.18	3.18	3.18	3.18	3.20	3.19	3.19	3.20	3.21	3.22	3.23	3.25		

C Range: 0 - 360DEG  
C Interval: 10.0DEG  
Test Speed: HIGH  
Temperature: 25.3DEG  
Operators: 0  
Test Date: 2022-05-03

γ Range: 0 - 180DEG  
γ Interval: 1.0DEG  
Test System: EVERFINE GO-2000B\_V1 SYSTEM V2.0.262  
Humidity: 65.0%  
Test Distance: 7.100m [K=1.0000]  
Remarks: