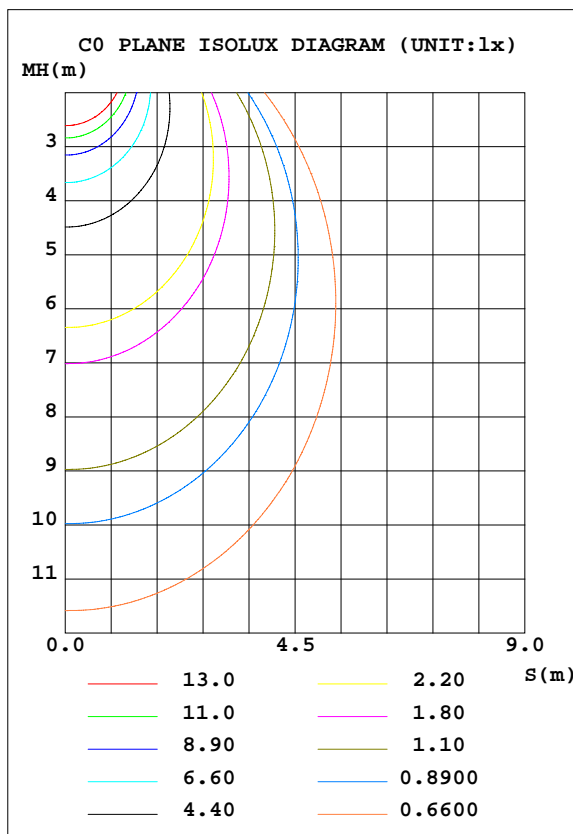
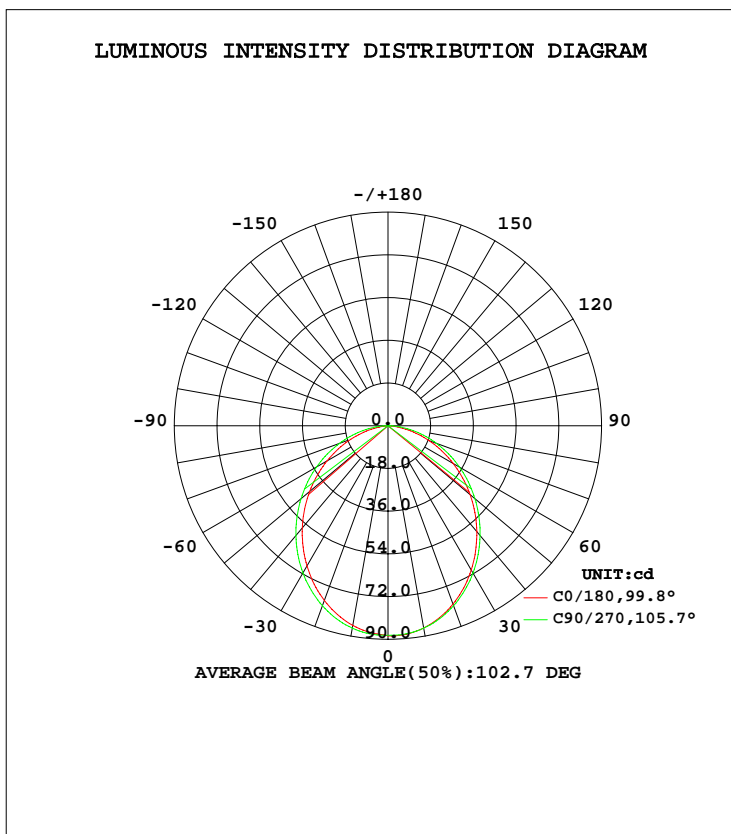


## LUMINAIRE PHOTOMETRIC TEST REPORT

Test:U:24.00V I:0.1700A P:4.080W PF:1.000 Lamp Flux:226.357x1 lm		
NAME: 4" Wide LED Light 4-Watts	TYPE:	WEIGHT:
DIM.:	SPEC.:	SERIAL No.:
MFR.: Avenue Lighting	SUR.:	PROTECTION ANGLE:

DATA OF LAMP		PHOTOMETRIC DATA			
MODEL	ML7010-BLK	Imax(cd)	88.56	S/MH(C0/180)	1.19
NOMINAL POWER(W)	4	LOR(%)	100.0	S/MH(C90/270)	1.21
RATED VOLTAGE(V)	24	TOTAL FLUX(lm)	226.36	$\eta$ UP, DN(C0-180)	0.1, 50.2
NOMINAL FLUX(lm)	226.357	CIE CLASS	DIRECT	$\eta$ UP, DN(C180-360)	0.1, 49.7
LAMPS INSIDE	1	$\eta$ up(%)	0.1	CIBSE SHR NOM	1.25
TEST VOLTAGE(V)	24	$\eta$ down(%)	99.9	CIBSE SHR MAX	1.35



C Range: 0 - 360DEG  
 C Interval: 45.0DEG  
 Test Speed: HIGH  
 Temperature:25.3DEG  
 Operators:0  
 Test Date:2022-07-04

$\gamma$  Range: 0 - 180DEG  
 $\gamma$  Interval: 1.0DEG  
 Test System:EVERFINE GO-2000B\_V1 SYSTEM V2.0.262  
 Humidity:65.0%  
 Test Distance:7.100m [K=1.0000]  
 Remarks:

ZONAL FLUX DIAGRAM

ZONAL FLUX DIAGRAM:

γ	C0	C45	C90	C135	C180	C225	C270	C315	γ	Φ zone	Φ total	lum,lamp
10	86.54	86.71	86.60	85.92	85.43	85.92	86.60	86.71	0- 10	8.338	8.338	3.68,3.68
20	80.01	80.74	80.74	79.49	78.36	79.49	80.74	80.74	10- 20	23.57	23.57	14.1,14.1
30	70.19	71.32	71.66	69.80	68.25	69.80	71.66	71.32	20- 30	34.81	34.81	29.5,29.5
40	58.23	59.69	60.40	58.08	56.19	58.08	60.40	59.69	30- 40	40.56	40.56	47.4,47.4
50	45.16	46.86	47.83	45.27	43.08	45.27	47.83	46.86	40- 50	40.51	40.51	65.3,65.3
60	31.64	33.57	34.74	31.99	29.65	31.99	34.74	33.57	50- 60	35.22	35.22	80.8,80.8
70	18.48	20.31	21.75	18.88	16.69	18.88	21.75	20.31	60- 70	25.87	25.87	92.3,92.3
80	6.425	7.999	9.583	6.782	4.943	6.782	9.583	7.999	70- 80	14.18	14.18	98.5,98.5
90	0	0	0.0036	0	0	0	0.0036	0	80- 90	3.034	3.034	99.9,99.9
100	0	0	0	0	0	0	0	0	90-100	0.0000	0.0000	99.9,99.9
110	0	0	0	0	0	0	0	0	100-110	0	0	99.9,99.9
120	0	0.0048	0	0.0142	0	0.0142	0	0.0048	110-120	0.0006	0.0006	99.9,99.9
130	0.0140	0.0520	0.0188	0.0613	0.0094	0.0613	0.0188	0.0520	120-130	0.0171	0.0171	99.9,99.9
140	0.0613	0.1085	0.0707	0.1133	0.0660	0.1133	0.0707	0.1085	130-140	0.0468	0.0468	99.9,99.9
150	0.1038	0.1501	0.1132	0.1464	0.1085	0.1464	0.1132	0.1501	140-150	0.0678	0.0678	99.9,99.9
160	0.1416	0.1888	0.1463	0.1860	0.1510	0.1860	0.1463	0.1888	150-160	0.0683	0.0683	100,100
170	0.1793	0.1960	0.1747	0.1941	0.1770	0.1941	0.1747	0.1960	160-170	0.0502	0.0502	100,100
180	0.1982	0.1982	0.1982	0.1982	0.1982	0.1982	0.1982	0.1982	170-180	0.0182	0.0182	100,100
DEG	LUMINOUS INTENSITY:cd									UNIT:lm		

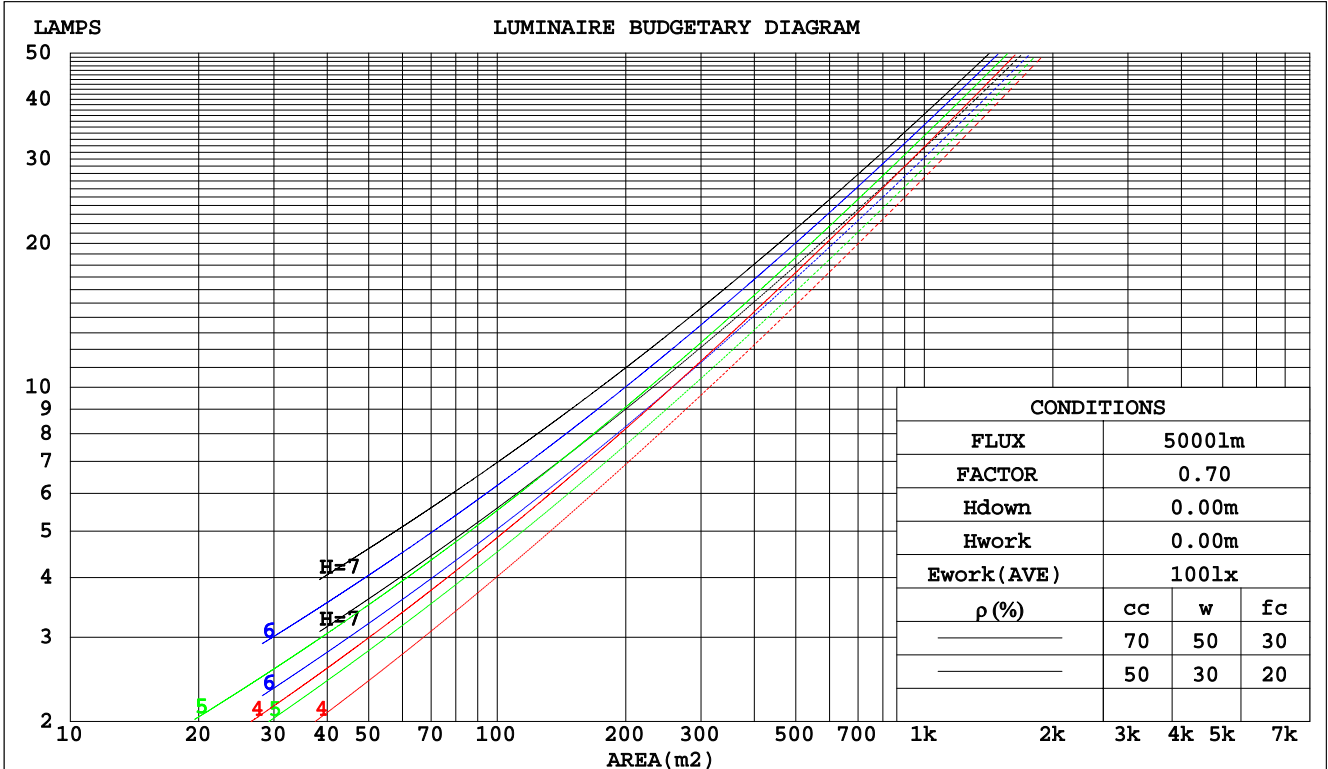
C Range: 0 - 360DEG  
 C Interval: 45.0DEG  
 Test Speed: HIGH  
 Temperature:25.3DEG  
 Operators:0  
 Test Date:2022-07-04

γ Range: 0 - 180DEG  
 γ Interval: 1.0DEG  
 Test System:EVERFINE GO-2000B\_V1 SYSTEM V2.0.262  
 Humidity:65.0%  
 Test Distance:7.100m [K=1.0000]  
 Remarks:

CU AND LUMINAIRE BUDGETARY ESTIMATE DIAGRAM

Test:U:24.00V I:0.1700A P:4.080W PF:1.000 Lamp Flux:226.357x1 lm		
NAME: linear10-s-3000k-4w-ra90	TYPE:	WEIGHT:
DIM.:	SPEC.:	SERIAL No.:
MFR.: 0	SUR.:	PROTECTION ANGLE:

pcc	80%			70%			50%			30%			10%			0
	50%	30%	10%	50%	30%	10%	50%	30%	10%	50%	30%	10%	50%	30%	10%	0
pw																0
pfc	20%			20%			20%			20%			20%			0
RCR	RCR:Room Cavity Ratio															
	Coefficients of Utilization(CU)															
0.0	1.19	1.19	1.19	1.16	1.16	1.16	1.11	1.11	1.11	1.06	1.06	1.06	1.02	1.02	1.02	.00
1.0	1.05	1.00	.97	1.02	.99	.95	.98	.95	.92	.94	.92	.89	.90	.88	.87	.85
2.0	.91	.85	.79	.90	.84	.78	.86	.81	.76	.83	.78	.75	.80	.76	.73	.71
3.0	.81	.73	.66	.79	.72	.66	.76	.70	.65	.73	.68	.63	.71	.66	.62	.60
4.0	.72	.63	.56	.70	.62	.56	.68	.61	.55	.65	.59	.54	.63	.58	.54	.52
5.0	.64	.55	.49	.63	.55	.49	.61	.54	.48	.59	.52	.47	.57	.51	.47	.45
6.0	.58	.49	.43	.57	.49	.43	.55	.48	.42	.53	.47	.42	.52	.46	.41	.39
7.0	.53	.44	.38	.52	.44	.38	.50	.43	.37	.49	.42	.37	.47	.41	.37	.35
8.0	.48	.40	.34	.47	.39	.34	.46	.39	.34	.45	.38	.33	.44	.38	.33	.31
9.0	.44	.36	.31	.44	.36	.30	.42	.35	.30	.41	.35	.30	.40	.34	.30	.28
10.0	.41	.33	.28	.40	.33	.28	.39	.32	.28	.38	.32	.27	.37	.32	.27	.26



C Range: 0 - 360DEG  
 C Interval: 45.0DEG  
 Test Speed: HIGH  
 Temperature: 25.3DEG  
 Operators: 0  
 Test Date: 2022-07-04

γ Range: 0 - 180DEG  
 γ Interval: 1.0DEG  
 Test System: EVERFINE GO-2000B\_V1 SYSTEM V2.0.262  
 Humidity: 65.0%  
 Test Distance: 7.100m [K=1.0000]  
 Remarks:

WEC AND CCEC

Test:U:24.00V I:0.1700A P:4.080W PF:1.000 Lamp Flux:226.357x1 lm		
NAME: linear10-s-3000k-4w-ra90	TYPE:	WEIGHT:
DIM.:	SPEC.:	SERIAL No.:
MFR.: 0	SUR.:	PROTECTION ANGLE:

ρcc	80%			70%			50%			30%			10%			0
ρw	50%	30%	10%	50%	30%	10%	50%	30%	10%	50%	30%	10%	50%	30%	10%	0
ρfc	20%			20%			20%			20%			20%			0
RCR	RCR:Room Cavity Ratio						Wall Exitance Coefficients(WEC)									
0.0																
1.0	.296	.168	.053	.289	.165	.052	.276	.158	.051	.264	.152	.049	.252	.146	.047	
2.0	.281	.154	.047	.275	.152	.047	.263	.146	.046	.253	.142	.044	.243	.137	.043	
3.0	.262	.139	.042	.256	.137	.041	.246	.133	.041	.236	.130	.040	.228	.126	.039	
4.0	.242	.126	.037	.238	.124	.037	.228	.121	.036	.220	.118	.036	.212	.115	.035	
5.0	.225	.115	.033	.221	.113	.033	.212	.111	.033	.205	.108	.032	.198	.106	.032	
6.0	.209	.105	.030	.205	.104	.030	.198	.101	.030	.191	.099	.029	.185	.097	.029	
7.0	.195	.096	.027	.191	.095	.027	.185	.094	.027	.179	.092	.027	.173	.090	.026	
8.0	.182	.089	.025	.179	.088	.025	.173	.087	.025	.168	.085	.025	.163	.084	.024	
9.0	.171	.083	.023	.168	.082	.023	.163	.081	.023	.158	.079	.023	.154	.078	.023	
10.0	.161	.077	.021	.159	.077	.021	.154	.075	.021	.150	.074	.021	.145	.073	.021	

ρcc	80%			70%			50%			30%			10%			0
ρw	50%	30%	10%	50%	30%	10%	50%	30%	10%	50%	30%	10%	50%	30%	10%	0
ρfc	20%			20%			20%			20%			20%			0
RCR	RCR:Room Cavity Ratio						Ceiling Cavity Exitance Coefficients(CCEC)									
0.0	.191	.191	.191	.164	.164	.164	.112	.112	.112	.064	.064	.064	.021	.021	.021	
1.0	.180	.157	.136	.154	.135	.117	.106	.093	.081	.061	.054	.047	.019	.017	.015	
2.0	.172	.133	.100	.147	.114	.087	.101	.079	.060	.058	.046	.035	.019	.015	.012	
3.0	.164	.115	.076	.140	.099	.066	.096	.069	.046	.056	.040	.027	.018	.013	.009	
4.0	.156	.102	.060	.134	.088	.052	.092	.061	.037	.053	.036	.022	.017	.012	.007	
5.0	.149	.091	.049	.128	.079	.043	.088	.055	.030	.051	.032	.018	.016	.011	.006	
6.0	.142	.083	.041	.122	.072	.035	.084	.050	.025	.049	.030	.015	.016	.010	.005	
7.0	.135	.076	.035	.116	.066	.030	.080	.046	.021	.047	.027	.013	.015	.009	.004	
8.0	.128	.070	.030	.111	.061	.026	.077	.043	.019	.045	.025	.011	.014	.008	.004	
9.0	.123	.065	.026	.106	.057	.023	.073	.040	.016	.043	.023	.010	.014	.008	.003	
10.0	.117	.061	.024	.101	.053	.021	.070	.037	.015	.041	.022	.009	.013	.007	.003	

C Range: 0 - 360DEG  
 C Interval: 45.0DEG  
 Test Speed: HIGH  
 Temperature:25.3DEG  
 Operators:0  
 Test Date:2022-07-04

γ Range: 0 - 180DEG  
 γ Interval: 1.0DEG  
 Test System:EVERFINE GO-2000B\_V1 SYSTEM V2.0.262  
 Humidity:65.0%  
 Test Distance:7.100m [K=1.0000]  
 Remarks:

## Uncorrected UGR Table

Test:U:24.00V I:0.1700A P:4.080W PF:1.000 Lamp Flux:226.357x1 lm										
NAME: linear10-s-3000k-4w-ra90					TYPE:			WEIGHT:		
DIM.:					SPEC.:			SERIAL No.:		
MFR.: 0					SUR.:			PROTECTION ANGLE:		
ceiling/cavity	0.7	0.7	0.5	0.5	0.3	0.7	0.7	0.5	0.5	0.3
walls	0.5	0.3	0.5	0.3	0.3	0.5	0.3	0.5	0.3	0.3
working plane	0.2	0.2	0.2	0.2	0.2	0.2	0.2	0.2	0.2	0.2
Room dimensions	Viewed crosswise					Viewed endwise				
x = 2H y = 2H	11.4	12.9	11.7	13.1	13.3	11.7	13.2	12.0	13.4	13.6
3H	12.7	14.1	13.0	14.3	14.6	13.2	14.6	13.5	14.8	15.0
4H	13.2	14.5	13.5	14.8	15.0	13.8	15.1	14.1	15.4	15.6
6H	13.5	14.7	13.8	15.0	15.3	14.3	15.5	14.6	15.8	16.0
8H	13.5	14.7	13.9	15.0	15.3	14.4	15.6	14.8	15.9	16.2
12H	13.5	14.7	13.9	14.9	15.3	14.5	15.6	14.9	15.9	16.2
4H 2H	12.0	13.3	12.3	13.6	13.8	12.3	13.6	12.6	13.8	14.1
3H	13.5	14.7	13.9	15.0	15.3	13.9	15.1	14.3	15.4	15.7
4H	14.1	15.2	14.5	15.5	15.8	14.7	15.7	15.0	16.0	16.4
6H	14.5	15.4	14.9	15.8	16.2	15.2	16.2	15.6	16.5	16.9
8H	14.6	15.5	15.0	15.8	16.2	15.4	16.3	15.9	16.7	17.1
12H	14.6	15.4	15.0	15.8	16.2	15.6	16.4	16.0	16.8	17.2
8H 4H	14.4	15.3	14.8	15.6	16.0	14.9	15.7	15.3	16.1	16.5
6H	14.9	15.6	15.4	16.0	16.5	15.6	16.3	16.0	16.7	17.1
8H	15.1	15.7	15.5	16.1	16.6	15.9	16.5	16.3	16.9	17.4
12H	15.1	15.6	15.6	16.1	16.6	16.1	16.6	16.6	17.1	17.5
12H 4H	14.4	15.2	14.8	15.6	16.0	14.9	15.7	15.3	16.0	16.5
6H	15.0	15.6	15.4	16.0	16.5	15.6	16.3	16.1	16.7	17.1
8H	15.1	15.7	15.6	16.1	16.6	15.9	16.5	16.4	16.9	17.4
Variations with the observer position at spacings:										
S = 1.0H	+ 0.2 / - 0.2					+ 0.2 / - 0.2				
1.5H	+ 0.2 / - 0.3					+ 0.2 / - 0.3				
2.0H	+ 0.2 / - 0.4					+ 0.2 / - 0.2				

CIE Pub.117 Corrected 226.4 lm Total Lamp Luminous Flux. (8log(F/F0) = -5.2)

C Range: 0 - 360DEG  
C Interval: 45.0DEG  
Test Speed: HIGH  
Temperature:25.3DEG  
Operators:0  
Test Date:2022-07-04

$\gamma$  Range: 0 - 180DEG  
 $\gamma$  Interval: 1.0DEG  
Test System:EVERFINE GO-2000B\_V1 SYSTEM V2.0.262  
Humidity:65.0%  
Test Distance:7.100m [K=1.0000]  
Remarks:

## UTILIZATION FACTORS TABLE

Test:U:24.00V I:0.1700A P:4.080W PF:1.000 Lamp Flux:226.357x1 lm		
NAME: linear10-s-3000k-4w-ra90	TYPE:	WEIGHT:
DIM.:	SPEC.:	SERIAL No.:
MFR.: 0	SUR.:	PROTECTION ANGLE:

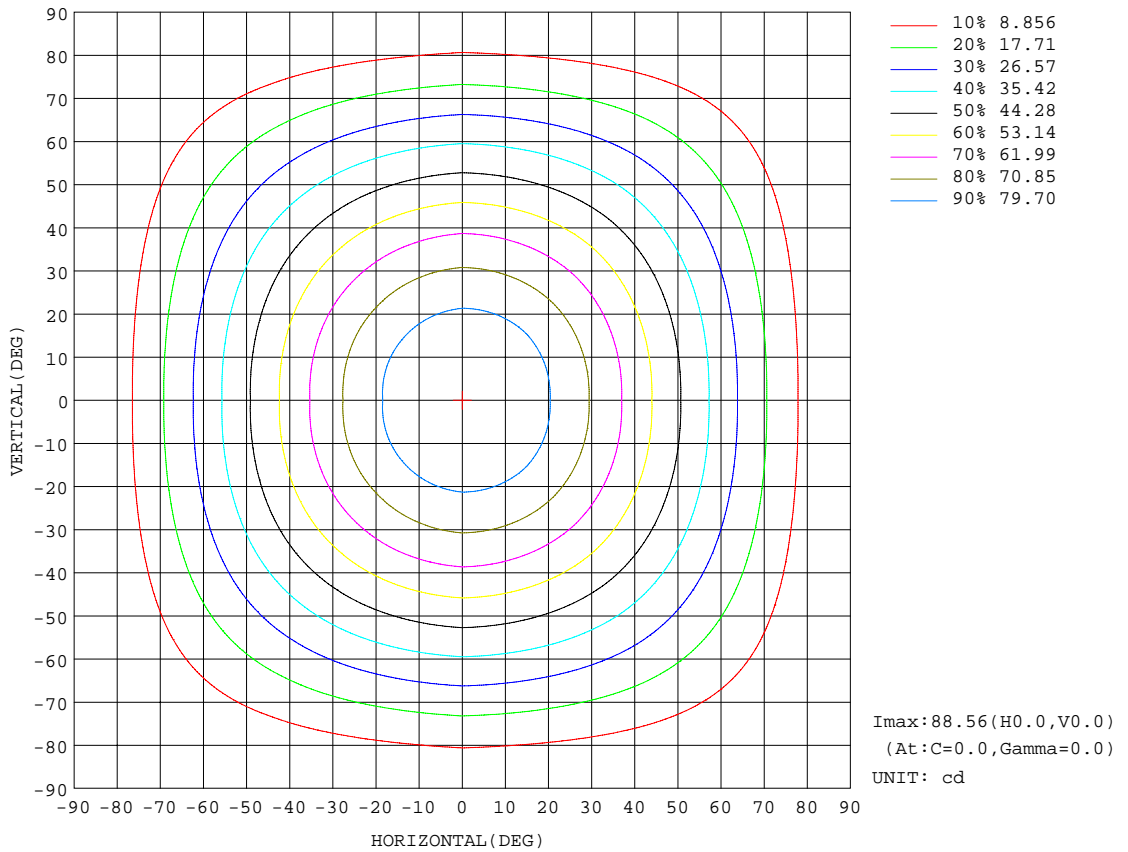
REFLECTANCE										
Ceiling	0.8	0.8	0.8	0.7	0.7	0.7	0.5	0.5	0.5	0
Walls	0.7	0.5	0.3	0.7	0.5	0.3	0.7	0.5	0.3	0
Working plane	0.2	0.2	0.2	0.2	0.2	0.2	0.2	0.2	0.2	0
ROOM INDEX	UTILIZATION FACTORS(PERCENT) $k(RI) \times RCR = 5$									
k = 0.60	59	48	41	58	48	41	57	47	41	34
0.80	69	58	51	68	57	51	66	57	50	43
1.00	77	67	60	76	66	59	74	67	59	52
1.25	84	74	67	83	74	67	80	72	66	59
1.50	89	80	73	88	79	73	85	77	72	64
2.00	96	88	82	94	87	81	91	84	79	72
2.50	100	92	87	98	91	86	94	88	84	76
3.00	103	96	91	101	95	90	97	92	88	80
4.00	107	101	97	105	100	96	100	96	93	84
5.00	109	105	101	107	103	99	102	99	96	87
ROOM INDEX	UF(total)									Direct
According to DIN EN 13032-2 2004			Suspended				SHRNOM = 1.25			

C Range: 0 - 360DEG  
 C Interval: 45.0DEG  
 Test Speed: HIGH  
 Temperature:25.3DEG  
 Operators:0  
 Test Date:2022-07-04

$\gamma$  Range: 0 - 180DEG  
 $\gamma$  Interval: 1.0DEG  
 Test System:EVERFINE GO-2000B\_V1 SYSTEM V2.0.262  
 Humidity:65.0%  
 Test Distance:7.100m [K=1.0000]  
 Remarks:

ISOCANDELA DIAGRAM

Test:U:24.00V I:0.1700A P:4.080W PF:1.000 Lamp Flux:226.357x1 lm		
NAME: linear10-s-3000k-4w-ra90	TYPE:	WEIGHT:
DIM.:	SPEC.:	SERIAL No.:
MFR.: 0	SUR.:	PROTECTION ANGLE:

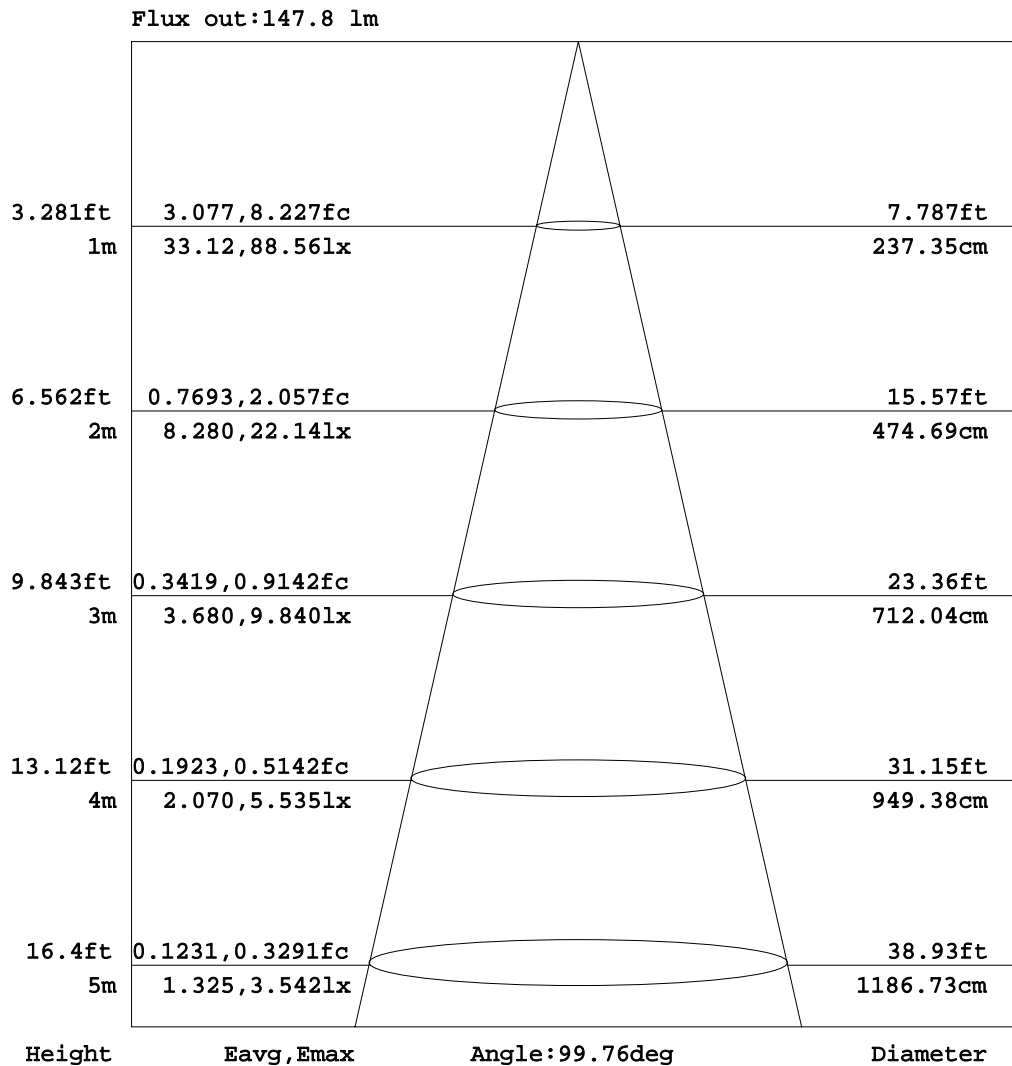


C Range: 0 - 360DEG  
 C Interval: 45.0DEG  
 Test Speed: HIGH  
 Temperature: 25.3DEG  
 Operators: 0  
 Test Date: 2022-07-04

γ Range: 0 - 180DEG  
 γ Interval: 1.0DEG  
 Test System: EVERFINE GO-2000B\_V1 SYSTEM V2.0.262  
 Humidity: 65.0%  
 Test Distance: 7.100m [K=1.0000]  
 Remarks:

AAI Figure

Test:U:24.00V I:0.1700A P:4.080W PF:1.000 Lamp Flux:226.357x1 lm		
NAME: linear10-s-3000k-4w-ra90	TYPE:	WEIGHT:
DIM.:	SPEC.:	SERIAL No.:
MFR.: 0	SUR.:	PROTECTION ANGLE:



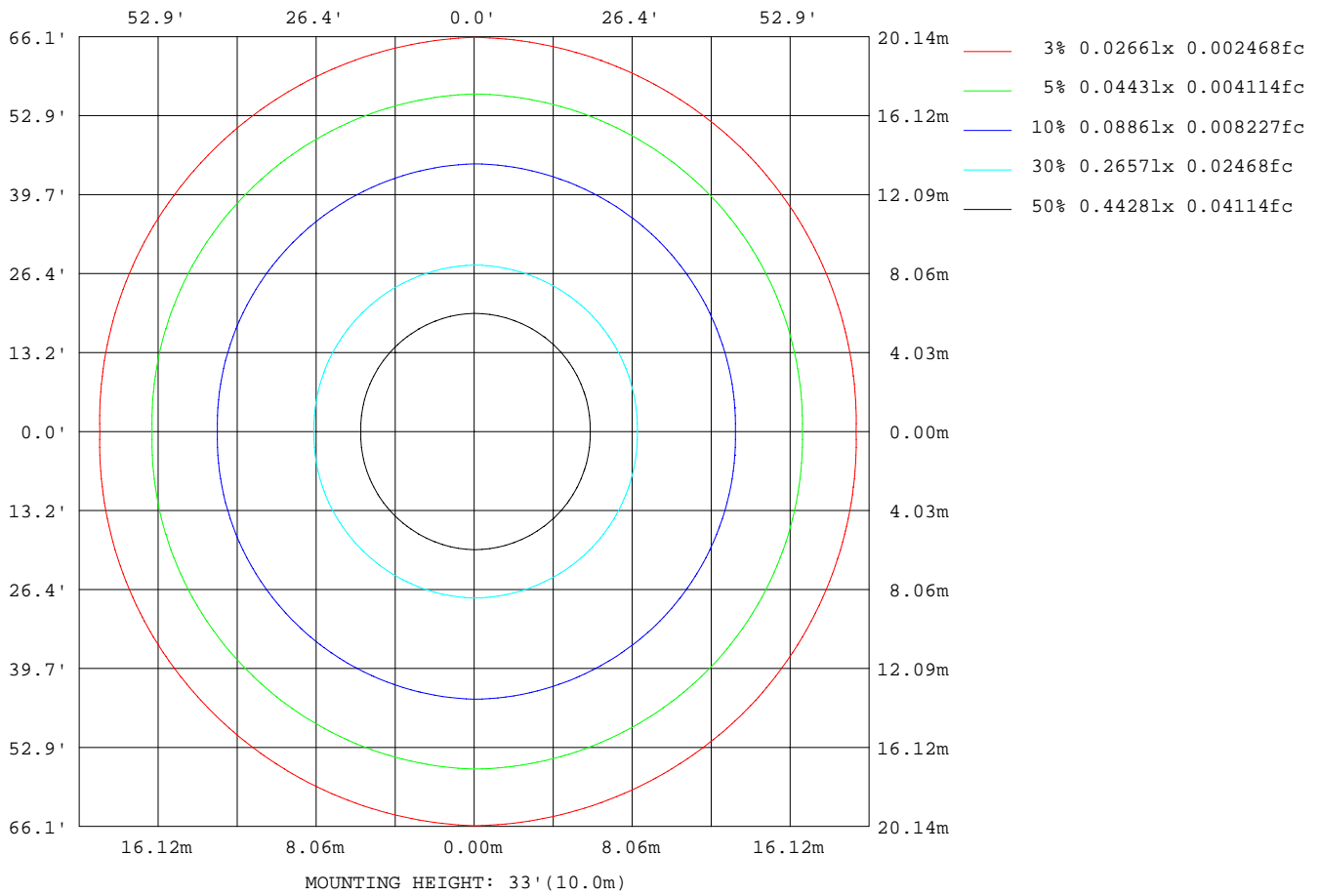
Note:The Curves indicate the illuminated area and the average illumination when the luminaire is at different distance.

C Range: 0 - 360DEG  
 C Interval: 45.0DEG  
 Test Speed: HIGH  
 Temperature:25.3DEG  
 Operators:0  
 Test Date:2022-07-04

γ Range: 0 - 180DEG  
 γ Interval: 1.0DEG  
 Test System:EVERFINE GO-2000B\_V1 SYSTEM V2.0.262  
 Humidity:65.0%  
 Test Distance:7.100m [K=1.0000]  
 Remarks:

ISOLUX DIAGRAM

Test:U:24.00V I:0.1700A P:4.080W PF:1.000 Lamp Flux:226.357x1 lm		
NAME: linear10-s-3000k-4w-ra90	TYPE:	WEIGHT:
DIM.:	SPEC.:	SERIAL No.:
MFR.: 0	SUR.:	PROTECTION ANGLE:



C Range: 0 - 360DEG  
 C Interval: 45.0DEG  
 Test Speed: HIGH  
 Temperature: 25.3DEG  
 Operators: 0  
 Test Date: 2022-07-04

γ Range: 0 - 180DEG  
 γ Interval: 1.0DEG  
 Test System: EVERFINE GO-2000B\_V1 SYSTEM V2.0.262  
 Humidity: 65.0%  
 Test Distance: 7.100m [K=1.0000]  
 Remarks:

## Average Luminance Table(CIBSE)

Test:U:24.00V I:0.1700A P:4.080W PF:1.000 Lamp Flux:226.357x1 lm		
NAME: linear10-s-3000k-4w-ra90	TYPE:	WEIGHT:
DIM.:	SPEC.:	SERIAL No.:
MFR.: 0	SUR.:	PROTECTION ANGLE:

Parameter description for average Luminance	Symbol	Value	Unit
Luminance in Azimuth Plane	Bc	refer Table 2	cd/sq.m.
Intensity at angle Gamma in given azimuth plane	I	from data	cd/klm
Number of lamps	N	1	
Output of each lamp(initial lumens as specified)	F	226.357	lm
Multiplying factor	K	1	
Luminous area in horizontal plane used in calculations	A	0.1	sq.m.
Angle to the downward vertical from light centre	Gamma	from data	deg

Table 1. Calculation parameters for determination of CIBSE LG3:1996 Average Luminance

G deg	C plane(deg)																		
	0	10	20	30	40	50	60	70	80	90	100	110	120	130	140	150	160	170	180
55	670	678	685	692	699	705	712	717	720	720	713	704	692	680	668	656	646	639	634
60	633	643	652	660	668	676	684	690	694	695	686	675	662	647	633	619	607	598	593
65	591	602	613	623	632	642	652	660	666	667	657	643	627	609	592	576	562	552	546
70	540	553	566	577	589	601	615	626	634	636	623	606	585	563	542	523	507	495	488
75	473	489	504	519	533	550	569	584	595	599	582	559	532	503	476	452	432	417	408
80	370	390	410	430	451	475	503	527	544	552	527	493	453	411	373	341	315	295	285
85	151	184	217	251	286	330	380	423	454	469	426	367	298	227	165	118	79	52	38

Table 2. Average Luminance(cd/sq.m.) for defined C plane,Gamma angle

CIBSE Category	Gamma (deg)	Average Luminance		Patch Luminance	
		maximum	specified	maximum	specified
		calculated	maximum	measured	maximum
Category 1	55 to 90	720	200	---	500
Category 2	65 to 90	667	200	---	500
Category 3	75 to 90	599	200	---	500

Table 3. Tabulation of Average and Patch Luminance(cd/sq.m.) for defined CIBSE categories

No match

C Range: 0 - 360DEG  
 C Interval: 45.0DEG  
 Test Speed: HIGH  
 Temperature:25.3DEG  
 Operators:0  
 Test Date:2022-07-04

$\gamma$  Range: 0 - 180DEG  
 $\gamma$  Interval: 1.0DEG  
 Test System:EVERFINE GO-2000B\_V1 SYSTEM V2.0.262  
 Humidity:65.0%  
 Test Distance:7.100m [K=1.0000]  
 Remarks:

Average Luminance Table(CIBSE)

Test:U:24.00V I:0.1700A P:4.080W PF:1.000 Lamp Flux:226.357x1 lm		
NAME: linear10-s-3000k-4w-ra90	TYPE:	WEIGHT:
DIM.:	SPEC.:	SERIAL No.:
MFR.: 0	SUR.:	PROTECTION ANGLE:

Parameter description for average Luminance	Symbol	Value	Unit
Luminance in Azimuth Plane	Bc	refer Table 2	cd/sq.m.
Intensity at angle Gamma in given azimuth plane	I	from data	cd/klm
Number of lamps	N	1	
Output of each lamp(initial lumens as specified)	F	226.357	lm
Multiplying factor	K	1	
Luminous area in horizontal plane used in calculations	A	0.1	sq.m.
Angle to the downward vertical from light centre	Gamma	from data	deg

Table 1. Calculation parameters for determination of CIBSE LG3:2001 Average Luminance

G deg	C plane(deg)																		
	0	10	20	30	40	50	60	70	80	90	100	110	120	130	140	150	160	170	180
55	670	678	685	692	699	705	712	717	720	720	713	704	692	680	668	656	646	639	634
60	633	643	652	660	668	676	684	690	694	695	686	675	662	647	633	619	607	598	593
65	591	602	613	623	632	642	652	660	666	667	657	643	627	609	592	576	562	552	546
70	540	553	566	577	589	601	615	626	634	636	623	606	585	563	542	523	507	495	488
75	473	489	504	519	533	550	569	584	595	599	582	559	532	503	476	452	432	417	408
80	370	390	410	430	451	475	503	527	544	552	527	493	453	411	373	341	315	295	285
85	151	184	217	251	286	330	380	423	454	469	426	367	298	227	165	118	79	52	38

Table 2. Average Luminance(cd/sq.m.) for defined C plane,Gamma angle

range (deg)	Maximum measured	Average Luminance(cd/sq.m)			
		Maximum limit for screen type & software category used			
		Type I,II screen Some neg.s'ware	Type I,II screen Only pos.s'ware	Type III screen Some neg.s'ware	Type III screen Only pos.s'ware
55 to 90	720	1000	1500	200	500
65 to 90	667	1000	1500	200	500

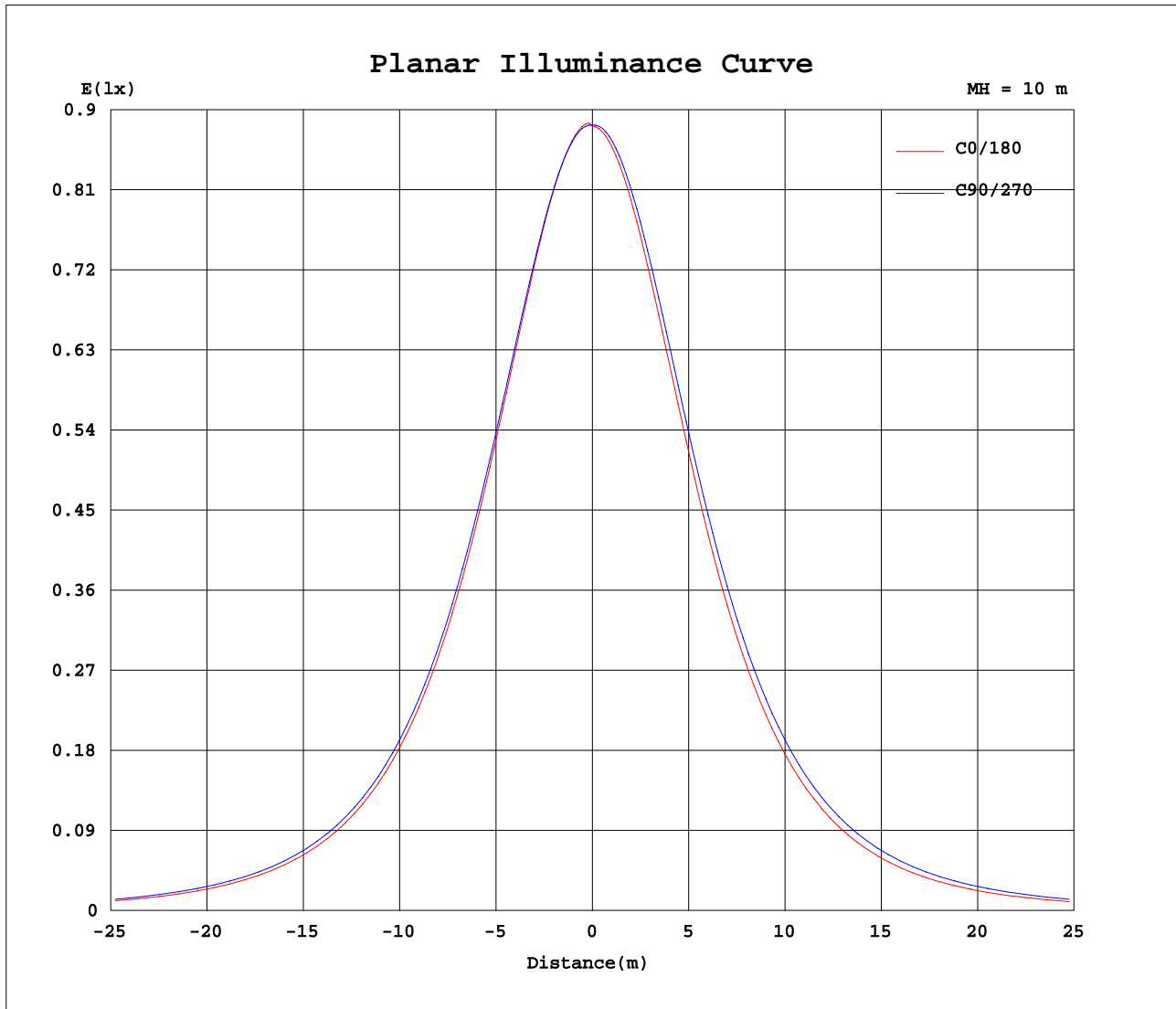
Table 3. Tabulation of average luminance(cd/sq.m.) and luminance limits

The luminaire satisfies the specified luminance criteria for Negative Software with Type I & II Screen(Good to Moderate treatment).

C Range: 0 - 360DEG  
 C Interval: 45.0DEG  
 Test Speed: HIGH  
 Temperature:25.3DEG  
 Operators:0  
 Test Date:2022-07-04

γ Range: 0 - 180DEG  
 γ Interval: 1.0DEG  
 Test System:EVERFINE GO-2000B\_V1 SYSTEM V2.0.262  
 Humidity:65.0%  
 Test Distance:7.100m [K=1.0000]  
 Remarks:

## Planar Illuminance Curve



C Range: 0 - 360DEG  
C Interval: 45.0DEG  
Test Speed: HIGH  
Temperature: 25.3DEG  
Operators: 0  
Test Date: 2022-07-04

$\gamma$  Range: 0 - 180DEG  
 $\gamma$  Interval: 1.0DEG  
Test System: EVERFINE GO-2000B\_V1 SYSTEM V2.0.262  
Humidity: 65.0%  
Test Distance: 7.100m [K=1.0000]  
Remarks:

LUMINOUS DISTRIBUTION INTENSITY DATA

Test:U:24.00V I:0.1700A P:4.080W PF:1.000 Lamp Flux:226.357x1 lm		
NAME: linear10-s-3000k-4w-ra90	TYPE:	WEIGHT:
DIM.:	SPEC.:	SERIAL No.:
MFR.: 0	SUR.:	PROTECTION ANGLE:

Table--1

UNIT: cd

C(DEG) γ (DEG)	0	45	90	135	180	225	270	315											
0	88.6	88.3	88.3	88.1	88.2	88.1	88.3	88.3											
5	88.2	88.1	88.0	87.6	87.4	87.6	88.0	88.1											
10	86.5	86.7	86.6	85.9	85.4	85.9	86.6	86.7											
15	83.8	84.2	84.1	83.2	82.3	83.2	84.1	84.2											
20	80.0	80.7	80.7	79.5	78.4	79.5	80.7	80.7											
25	75.5	76.4	76.5	75.0	73.7	75.0	76.5	76.4											
30	70.2	71.3	71.7	69.8	68.2	69.8	71.7	71.3											
35	64.4	65.7	66.2	64.1	62.4	64.1	66.2	65.7											
40	58.2	59.7	60.4	58.1	56.2	58.1	60.4	59.7											
45	51.8	53.4	54.2	51.8	49.7	51.8	54.2	53.4											
50	45.2	46.9	47.8	45.3	43.1	45.3	47.8	46.9											
55	38.4	40.2	41.3	38.7	36.4	38.7	41.3	40.2											
60	31.6	33.6	34.7	32.0	29.7	32.0	34.7	33.6											
65	25.0	26.9	28.2	25.4	23.1	25.4	28.2	26.9											
70	18.5	20.3	21.8	18.9	16.7	18.9	21.8	20.3											
75	12.3	14.0	15.5	12.7	10.6	12.7	15.5	14.0											
80	6.43	8.00	9.58	6.78	4.94	6.78	9.58	8.00											
85	1.31	2.65	4.09	1.67	0.33	1.67	4.09	2.65											
90	0.00	0.00	0.00	0.00	0.00	0.00	0.00	0.00											
95	0.00	0.00	0.00	0.00	0.00	0.00	0.00	0.00											
100	0.00	0.00	0.00	0.00	0.00	0.00	0.00	0.00											
105	0.00	0.00	0.00	0.00	0.00	0.00	0.00	0.00											
110	0.00	0.00	0.00	0.00	0.00	0.00	0.00	0.00											
115	0.00	0.00	0.00	0.00	0.00	0.00	0.00	0.00											
120	0.00	0.00	0.00	0.01	0.00	0.01	0.00	0.00											
125	0.00	0.04	0.00	0.04	0.00	0.04	0.00	0.04											
130	0.01	0.05	0.02	0.06	0.01	0.06	0.02	0.05											
135	0.03	0.08	0.04	0.09	0.04	0.09	0.04	0.08											
140	0.06	0.11	0.07	0.11	0.07	0.11	0.07	0.11											
145	0.08	0.13	0.08	0.14	0.08	0.14	0.08	0.13											
150	0.10	0.15	0.11	0.15	0.11	0.15	0.11	0.15											
155	0.13	0.17	0.13	0.17	0.13	0.17	0.13	0.17											
160	0.14	0.19	0.15	0.19	0.15	0.19	0.15	0.19											
165	0.16	0.19	0.16	0.19	0.16	0.19	0.16	0.19											
170	0.18	0.20	0.17	0.19	0.18	0.19	0.17	0.20											
175	0.20	0.20	0.19	0.20	0.19	0.20	0.19	0.20											
180	0.20	0.20	0.20	0.20	0.20	0.20	0.20	0.20											

C Range: 0 - 360DEG  
 C Interval: 45.0DEG  
 Test Speed: HIGH  
 Temperature:25.3DEG  
 Operators:0  
 Test Date:2022-07-04

γ Range: 0 - 180DEG  
 γ Interval: 1.0DEG  
 Test System:EVERFINE GO-2000B\_V1 SYSTEM V2.0.262  
 Humidity:65.0%  
 Test Distance:7.100m [K=1.0000]  
 Remarks: