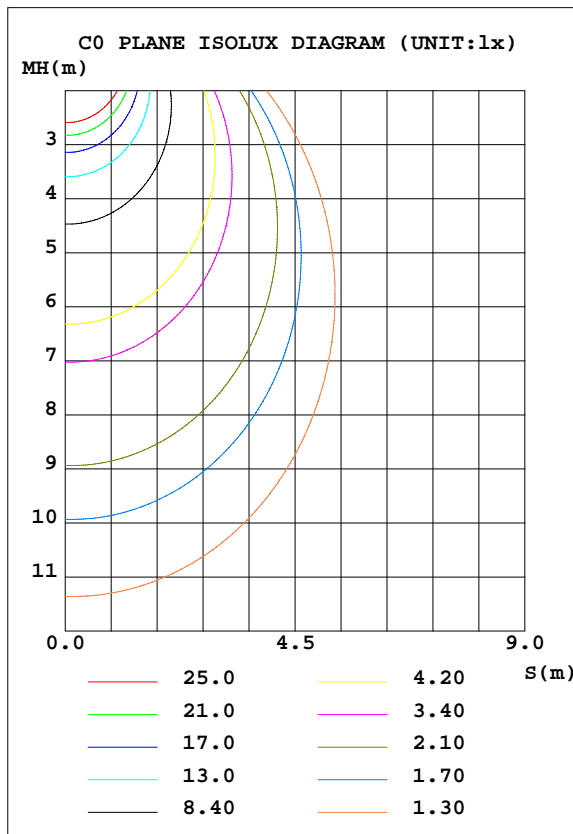
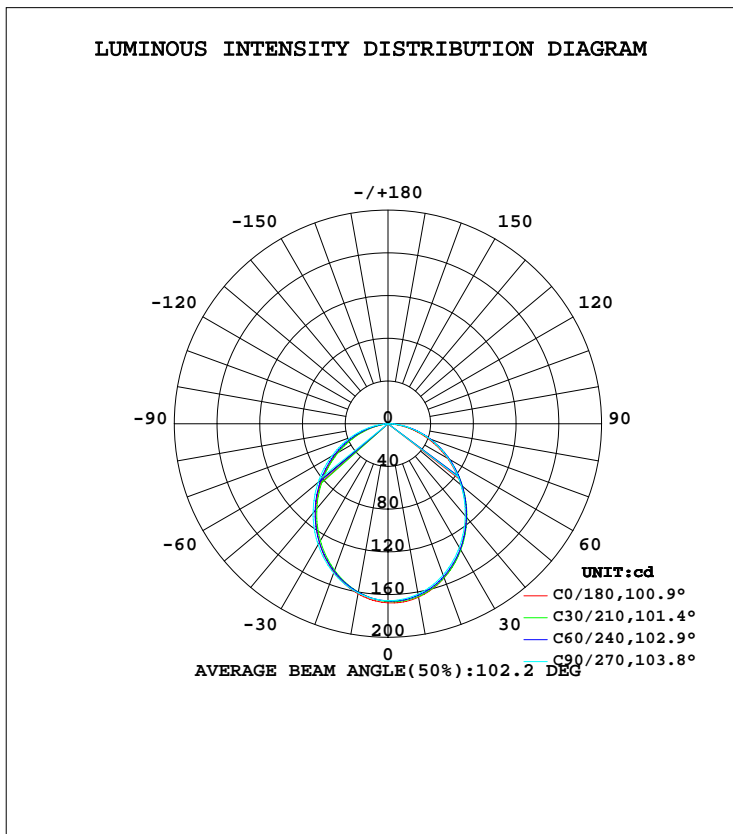


LUMINAIRE PHOTOMETRIC TEST REPORT

Test:U:24.00V I:0.3300A P:7.920W PF:1.000 Lamp Flux:422.42x1 lm		
NAME: Fold10-s-3000k-ra90-8w	TYPE:	WEIGHT:
DIM.:	SPEC.:	SERIAL No.:
MFR.: 0 Avenue Lighting	SUR.:	PROTECTION ANGLE:

DATA OF LAMP		PHOTOMETRIC DATA Eff: 53.34 lm/W			
MODEL	ML5010-BLK	I _{max} (cd)	167.8	S/MH(C0/180)	1.21
NOMINAL POWER(W)	8	LOR(%)	100.0	S/MH(C90/270)	1.21
RATED VOLTAGE(V)	24	TOTAL FLUX(lm)	422.42	η UP, DN(C0-180)	0.1, 51.0
NOMINAL FLUX(lm)	422.42	CIE CLASS	DIRECT	η UP, DN(C180-360)	0.1, 48.7
LAMPS INSIDE	1	η up(%)	0.2	CIBSE SHR NOM	1.25
TEST VOLTAGE(V)	24	η down(%)	99.8	CIBSE SHR MAX	1.35



C Range: 0 - 360DEG
 C Interval: 10.0DEG
 Test Speed: HIGH
 Temperature:25.3DEG
 Operators:0
 Test Date:2022-06-11

γ Range: 0 - 180DEG
 γ Interval: 1.0DEG
 Test System:EVERFINE GO-2000B_V1 SYSTEM V2.0.262
 Humidity:65.0%
 Test Distance:7.100m [K=1.0000]
 Remarks:

ZONAL FLUX DIAGRAM

ZONAL FLUX DIAGRAM:

γ	C0	C45	C90	C135	C180	C225	C270	C315	γ	Φ zone	Φ total	$\%lum, lamp$
10	164.8	163.7	162.0	160.2	161.6	160.0	160.9	162.1	0- 10	15.64	15.64	3.7,3.7
20	153.6	153.0	150.7	147.5	147.9	146.5	148.7	150.7	10- 20	44.09	59.73	14.1,14.1
30	135.8	136.0	133.6	129.0	128.4	127.4	130.9	133.2	20- 30	65.00	124.7	29.5,29.5
40	113.8	114.7	112.5	107.0	105.4	104.8	109.1	111.6	30- 40	75.63	200.4	47.4,47.4
50	89.40	91.11	89.33	83.12	80.58	80.39	85.41	87.74	40- 50	75.48	275.8	65.3,65.3
60	64.04	66.55	65.27	58.58	54.99	55.45	60.98	63.05	50- 60	65.61	341.4	80.8,80.8
70	38.99	41.98	41.45	34.35	30.22	30.95	36.99	38.43	60- 70	48.19	389.6	92.2,92.2
80	15.67	18.57	18.88	11.77	7.618	8.428	14.38	15.15	70- 80	26.35	416.0	98.5,98.5
90	0.0001	0.0363	0	0	0	0	0	0	80- 90	5.486	421.5	99.8,99.8
100	0	0	0	0	0	0	0	0	90-100	0.0008	421.5	99.8,99.8
110	0	0.0142	0.0426	0.0260	0.0567	0.0401	0.0094	0.0166	100-110	0.0080	421.5	99.8,99.8
120	0.0612	0.0850	0.1322	0.1132	0.1417	0.1298	0.1037	0.0921	110-120	0.0633	421.5	99.8,99.8
130	0.1509	0.1770	0.2219	0.2029	0.2267	0.2124	0.1933	0.1864	120-130	0.1352	421.7	99.8,99.8
140	0.2406	0.2690	0.3115	0.2856	0.3210	0.3043	0.2689	0.2761	130-140	0.1856	421.9	99.9,99.9
150	0.3302	0.3469	0.3871	0.3728	0.4012	0.3776	0.3492	0.3610	140-150	0.2031	422.1	99.9,99.9
160	0.4105	0.4271	0.4531	0.4412	0.4766	0.4413	0.4153	0.4248	150-160	0.1844	422.2	100,100
170	0.4671	0.4749	0.4942	0.4786	0.4979	0.4847	0.4672	0.4721	160-170	0.1301	422.4	100,100
180	0.5049	0.4955	0.5002	0.4955	0.5049	0.5002	0.4955	0.4955	170-180	0.0465	422.4	100,100
DEG	LUMINOUS INTENSITY:cd									UNIT:lm		

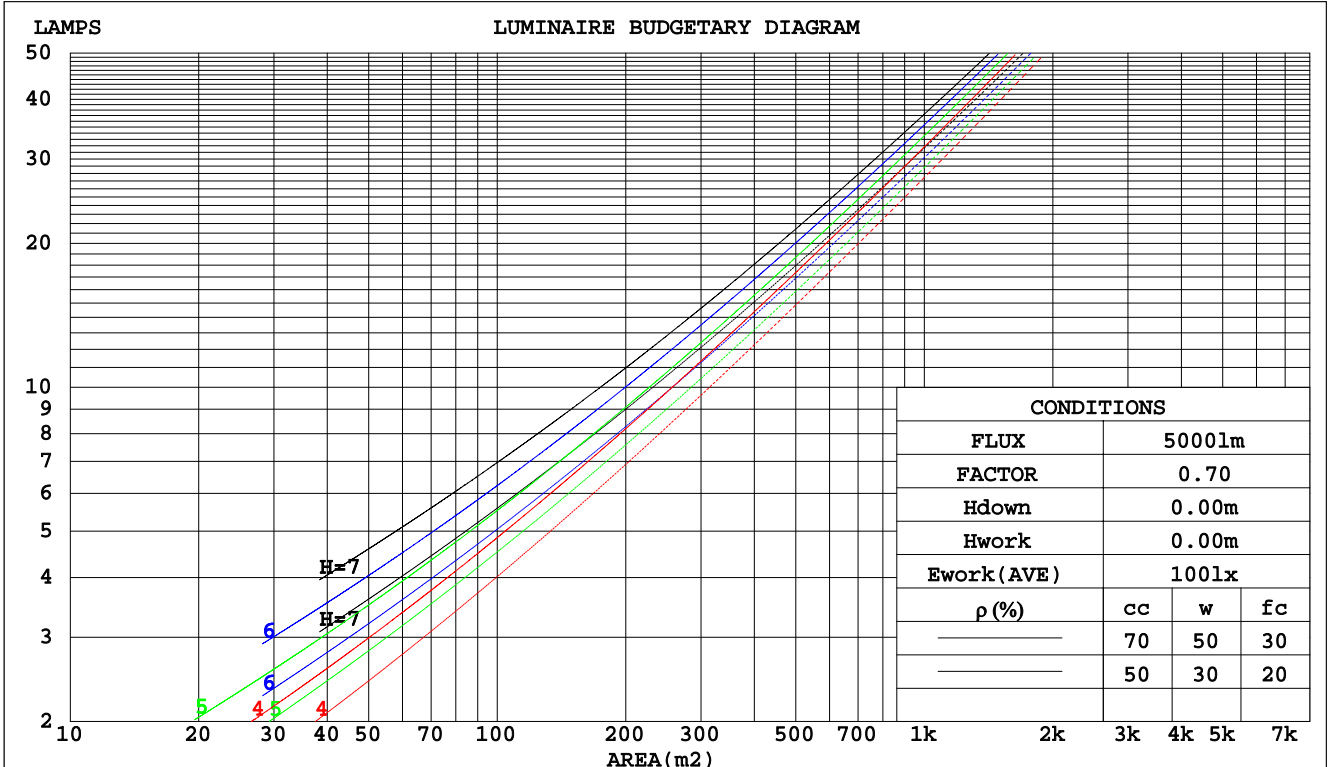
C Range: 0 - 360DEG
C Interval: 10.0DEG
Test Speed: HIGH
Temperature:25.3DEG
Operators:0
Test Date:2022-06-11

γ Range: 0 - 180DEG
 γ Interval: 1.0DEG
Test System:EVERFINE GO-2000B_V1 SYSTEM V2.0.262
Humidity:65.0%
Test Distance:7.100m [K=1.0000]
Remarks:

CU AND LUMINAIRE BUDGETARY ESTIMATE DIAGRAM

Test:U:24.00V I:0.3300A P:7.920W PF:1.000 Lamp Flux:422.42x1 lm		
NAME: Fold10-s-3000k-ra90-8w	TYPE:	WEIGHT:
DIM.:	SPEC.:	SERIAL No.:
MFR.: 0	SUR.:	PROTECTION ANGLE:

pcc	80%			70%			50%			30%			10%			0
	50%	30%	10%	50%	30%	10%	50%	30%	10%	50%	30%	10%	50%	30%	10%	0
pw																0
pfc																0
RCR	RCR:Room Cavity Ratio Coefficients of Utilization(CU)															
0.0	1.19	1.19	1.19	1.16	1.16	1.16	1.11	1.11	1.11	1.06	1.06	1.06	1.02	1.02	1.02	.00
1.0	1.05	1.00	.97	1.02	.99	.95	.98	.95	.92	.94	.92	.89	.90	.88	.87	.84
2.0	.92	.85	.79	.90	.84	.78	.86	.81	.77	.83	.78	.75	.80	.76	.73	.71
3.0	.81	.73	.66	.79	.72	.66	.76	.70	.65	.73	.68	.63	.71	.66	.62	.60
4.0	.72	.63	.56	.70	.62	.56	.68	.61	.55	.65	.59	.55	.63	.58	.54	.52
5.0	.64	.55	.49	.63	.55	.49	.61	.54	.48	.59	.53	.47	.57	.51	.47	.45
6.0	.58	.49	.43	.57	.49	.43	.55	.48	.42	.53	.47	.42	.52	.46	.41	.39
7.0	.53	.44	.38	.52	.44	.38	.50	.43	.37	.49	.42	.37	.47	.41	.37	.35
8.0	.48	.40	.34	.47	.39	.34	.46	.39	.34	.45	.38	.33	.44	.38	.33	.31
9.0	.44	.36	.31	.44	.36	.31	.42	.35	.30	.41	.35	.30	.40	.34	.30	.28
10.0	.41	.33	.28	.40	.33	.28	.39	.32	.28	.38	.32	.28	.37	.32	.27	.26



C Range: 0 - 360DEG
 C Interval: 10.0DEG
 Test Speed: HIGH
 Temperature: 25.3DEG
 Operators: 0
 Test Date: 2022-06-11

γ Range: 0 - 180DEG
 γ Interval: 1.0DEG
 Test System: EVERFINE GO-2000B_V1 SYSTEM V2.0.262
 Humidity: 65.0%
 Test Distance: 7.100m [K=1.0000]
 Remarks:

WEC AND CCEC

Test:U:24.00V I:0.3300A P:7.920W PF:1.000 Lamp Flux:422.42x1 lm		
NAME: Fold10-s-3000k-ra90-8w	TYPE:	WEIGHT:
DIM.:	SPEC.:	SERIAL No.:
MFR.: 0	SUR.:	PROTECTION ANGLE:

ρcc	80%			70%			50%			30%			10%			0
ρw	50%	30%	10%	50%	30%	10%	50%	30%	10%	50%	30%	10%	50%	30%	10%	0
ρfc	20%			20%			20%			20%			20%			0
RCR	RCR:Room Cavity Ratio						Wall Exitance Coefficients(WEC)									
0.0																
1.0	.296	.168	.053	.288	.165	.052	.275	.158	.050	.263	.152	.049	.252	.146	.047	
2.0	.281	.154	.047	.275	.151	.047	.263	.146	.045	.252	.141	.044	.242	.137	.043	
3.0	.261	.139	.042	.256	.137	.041	.246	.133	.040	.236	.129	.040	.227	.126	.039	
4.0	.242	.126	.037	.237	.124	.037	.228	.121	.036	.220	.118	.036	.212	.115	.035	
5.0	.225	.114	.033	.220	.113	.033	.212	.110	.033	.205	.108	.032	.197	.105	.032	
6.0	.209	.105	.030	.205	.104	.030	.198	.101	.029	.191	.099	.029	.185	.097	.029	
7.0	.195	.096	.027	.191	.095	.027	.185	.093	.027	.179	.092	.027	.173	.090	.026	
8.0	.182	.089	.025	.179	.088	.025	.173	.087	.025	.168	.085	.025	.163	.084	.024	
9.0	.171	.083	.023	.168	.082	.023	.163	.081	.023	.158	.079	.023	.153	.078	.023	
10.0	.161	.077	.021	.158	.077	.021	.154	.075	.021	.149	.074	.021	.145	.073	.021	

ρcc	80%			70%			50%			30%			10%			0
ρw	50%	30%	10%	50%	30%	10%	50%	30%	10%	50%	30%	10%	50%	30%	10%	0
ρfc	20%			20%			20%			20%			20%			0
RCR	RCR:Room Cavity Ratio						Ceiling Cavity Exitance Coefficients(CCEC)									
0.0	.192	.192	.192	.164	.164	.164	.112	.112	.112	.064	.064	.064	.021	.021	.021	
1.0	.181	.158	.137	.155	.136	.118	.106	.093	.082	.061	.054	.048	.020	.017	.015	
2.0	.173	.134	.101	.148	.115	.087	.101	.080	.061	.058	.046	.036	.019	.015	.012	
3.0	.165	.116	.077	.141	.100	.067	.097	.070	.047	.056	.041	.028	.018	.013	.009	
4.0	.157	.103	.061	.135	.089	.053	.093	.062	.037	.054	.036	.022	.017	.012	.007	
5.0	.149	.092	.050	.128	.080	.043	.088	.056	.031	.051	.033	.018	.017	.011	.006	
6.0	.142	.084	.042	.122	.073	.036	.084	.051	.026	.049	.030	.015	.016	.010	.005	
7.0	.136	.077	.036	.117	.067	.031	.081	.047	.022	.047	.027	.013	.015	.009	.004	
8.0	.129	.071	.031	.111	.062	.027	.077	.043	.019	.045	.026	.011	.014	.008	.004	
9.0	.123	.066	.027	.106	.057	.024	.074	.040	.017	.043	.024	.010	.014	.008	.003	
10.0	.118	.062	.025	.101	.054	.021	.070	.038	.015	.041	.022	.009	.013	.007	.003	

C Range: 0 - 360DEG
 C Interval: 10.0DEG
 Test Speed: HIGH
 Temperature:25.3DEG
 Operators:0
 Test Date:2022-06-11

γ Range: 0 - 180DEG
 γ Interval: 1.0DEG
 Test System:EVERFINE GO-2000B_V1 SYSTEM V2.0.262
 Humidity:65.0%
 Test Distance:7.100m [K=1.0000]
 Remarks:

Uncorrected UGR Table

Test:U:24.00V I:0.3300A P:7.920W PF:1.000 Lamp Flux:422.42x1 lm										
NAME: Fold10-s-3000k-ra90-8w					TYPE:			WEIGHT:		
DIM.:					SPEC.:			SERIAL No.:		
MFR.: 0					SUR.:			PROTECTION ANGLE:		
ceiling/cavity	0.7	0.7	0.5	0.5	0.3	0.7	0.7	0.5	0.5	0.3
walls	0.5	0.3	0.5	0.3	0.3	0.5	0.3	0.5	0.3	0.3
working plane	0.2	0.2	0.2	0.2	0.2	0.2	0.2	0.2	0.2	0.2
Room dimensions	Viewed crosswise					Viewed endwise				
x = 2H y = 2H	14.0	15.5	14.3	15.7	15.9	14.1	15.6	14.3	15.8	16.0
3H	15.5	16.8	15.8	17.1	17.3	15.6	17.0	15.9	17.2	17.5
4H	16.0	17.3	16.3	17.6	17.8	16.3	17.6	16.6	17.8	18.1
6H	16.4	17.6	16.7	17.9	18.2	16.8	18.0	17.1	18.2	18.5
8H	16.5	17.7	16.9	18.0	18.3	16.9	18.1	17.3	18.4	18.7
12H	16.5	17.7	16.9	18.0	18.3	17.0	18.2	17.4	18.5	18.8
4H 2H	14.6	15.9	15.0	16.2	16.5	14.7	16.0	15.0	16.2	16.5
3H	16.3	17.4	16.6	17.7	18.0	16.4	17.6	16.8	17.9	18.2
4H	17.0	18.0	17.4	18.3	18.7	17.2	18.3	17.6	18.6	18.9
6H	17.5	18.4	17.9	18.8	19.1	17.9	18.8	18.3	19.1	19.5
8H	17.7	18.5	18.1	18.9	19.3	18.1	18.9	18.5	19.3	19.7
12H	17.7	18.5	18.2	18.9	19.3	18.2	19.0	18.7	19.4	19.8
8H 4H	17.3	18.1	17.7	18.5	18.9	17.5	18.4	17.9	18.7	19.1
6H	18.0	18.7	18.4	19.1	19.5	18.3	19.0	18.7	19.4	19.8
8H	18.2	18.8	18.7	19.3	19.7	18.6	19.3	19.1	19.7	20.1
12H	18.3	18.9	18.8	19.3	19.8	18.9	19.4	19.4	19.9	20.4
12H 4H	17.3	18.1	17.7	18.5	18.9	17.5	18.3	17.9	18.7	19.1
6H	18.0	18.7	18.5	19.1	19.6	18.4	19.0	18.8	19.4	19.9
8H	18.3	18.9	18.8	19.3	19.8	18.7	19.3	19.2	19.7	20.2
Variations with the observer position at spacings:										
S = 1.0H	+ 0.2 / - 0.2					+ 0.2 / - 0.2				
1.5H	+ 0.2 / - 0.3					+ 0.2 / - 0.3				
2.0H	+ 0.2 / - 0.3					+ 0.1 / - 0.3				

CIE Pub.117 Corrected 422.4 lm Total Lamp Luminous Flux. (8log(F/F0) = -3.0)

C Range: 0 - 360DEG
C Interval: 10.0DEG
Test Speed: HIGH
Temperature: 25.3DEG
Operators: 0
Test Date: 2022-06-11

γ Range: 0 - 180DEG
 γ Interval: 1.0DEG
Test System: EVERFINE GO-2000B_V1 SYSTEM V2.0.262
Humidity: 65.0%
Test Distance: 7.100m [K=1.0000]
Remarks:

UTILIZATION FACTORS TABLE

Test:U:24.00V I:0.3300A P:7.920W PF:1.000 Lamp Flux:422.42x1 lm		
NAME: Fold10-s-3000k-ra90-8w	TYPE:	WEIGHT:
DIM.:	SPEC.:	SERIAL No.:
MFR.: 0	SUR.:	PROTECTION ANGLE:

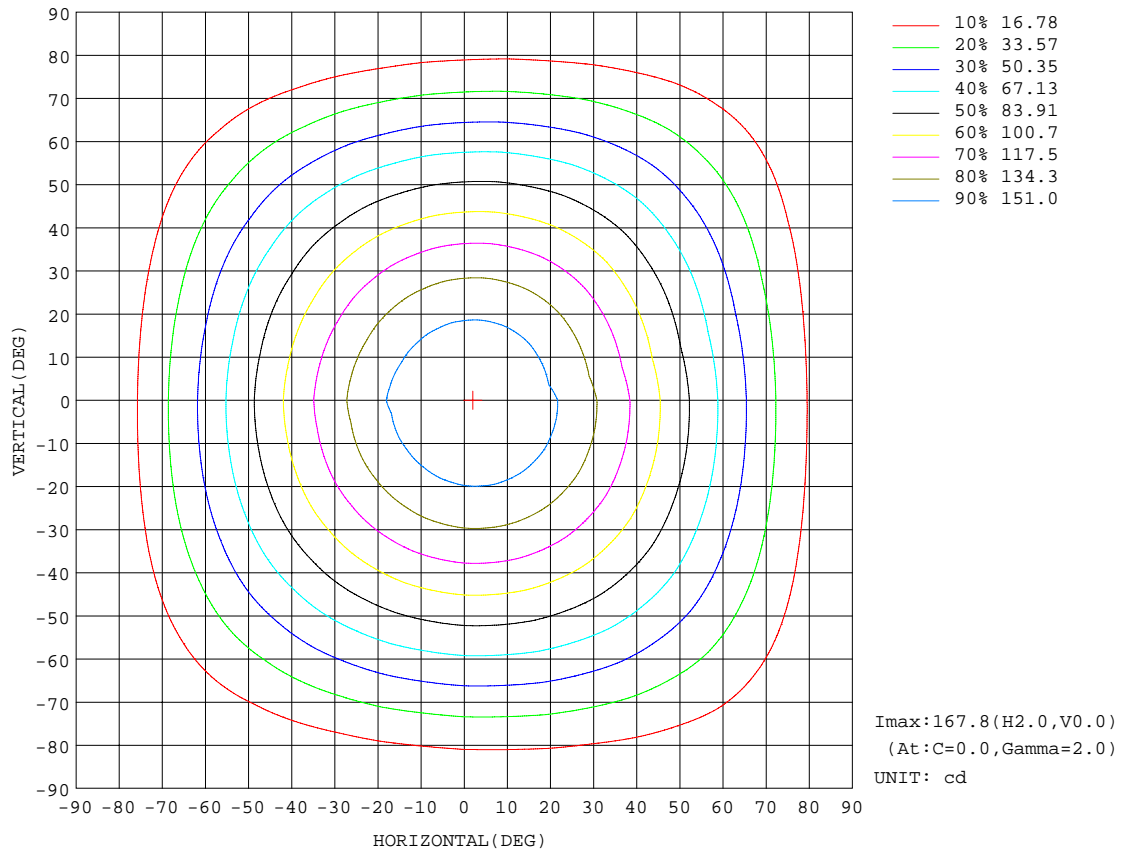
REFLECTANCE										
Ceiling	0.8	0.8	0.8	0.7	0.7	0.7	0.5	0.5	0.5	0
Walls	0.7	0.5	0.3	0.7	0.5	0.3	0.7	0.5	0.3	0
Working plane	0.2	0.2	0.2	0.2	0.2	0.2	0.2	0.2	0.2	0
ROOM INDEX	UTILIZATION FACTORS(PERCENT) $k(RI) \times RCR = 5$									
k = 0.60	59	48	41	58	48	41	57	47	41	34
0.80	69	58	51	68	57	51	66	57	50	43
1.00	77	67	60	76	66	59	74	67	59	52
1.25	84	74	67	83	74	67	80	72	66	59
1.50	89	80	73	88	79	73	85	77	72	64
2.00	96	88	82	94	87	81	91	84	79	72
2.50	100	92	87	98	91	86	94	88	84	76
3.00	103	96	91	101	95	90	97	92	88	80
4.00	107	101	97	104	100	96	100	96	93	84
5.00	109	105	101	107	103	99	102	99	96	87
ROOM INDEX	UF(total)									Direct
According to DIN EN 13032-2 2004			Suspended				SHRNOM = 1.25			

C Range: 0 - 360DEG
 C Interval: 10.0DEG
 Test Speed: HIGH
 Temperature:25.3DEG
 Operators:0
 Test Date:2022-06-11

γ Range: 0 - 180DEG
 γ Interval: 1.0DEG
 Test System:EVERFINE GO-2000B_V1 SYSTEM V2.0.262
 Humidity:65.0%
 Test Distance:7.100m [K=1.0000]
 Remarks:

ISOCANDELA DIAGRAM

Test:U:24.00V I:0.3300A P:7.920W PF:1.000 Lamp Flux:422.42x1 lm		
NAME: Fold10-s-3000k-ra90-8w	TYPE:	WEIGHT:
DIM.:	SPEC.:	SERIAL No.:
MFR.: 0	SUR.:	PROTECTION ANGLE:

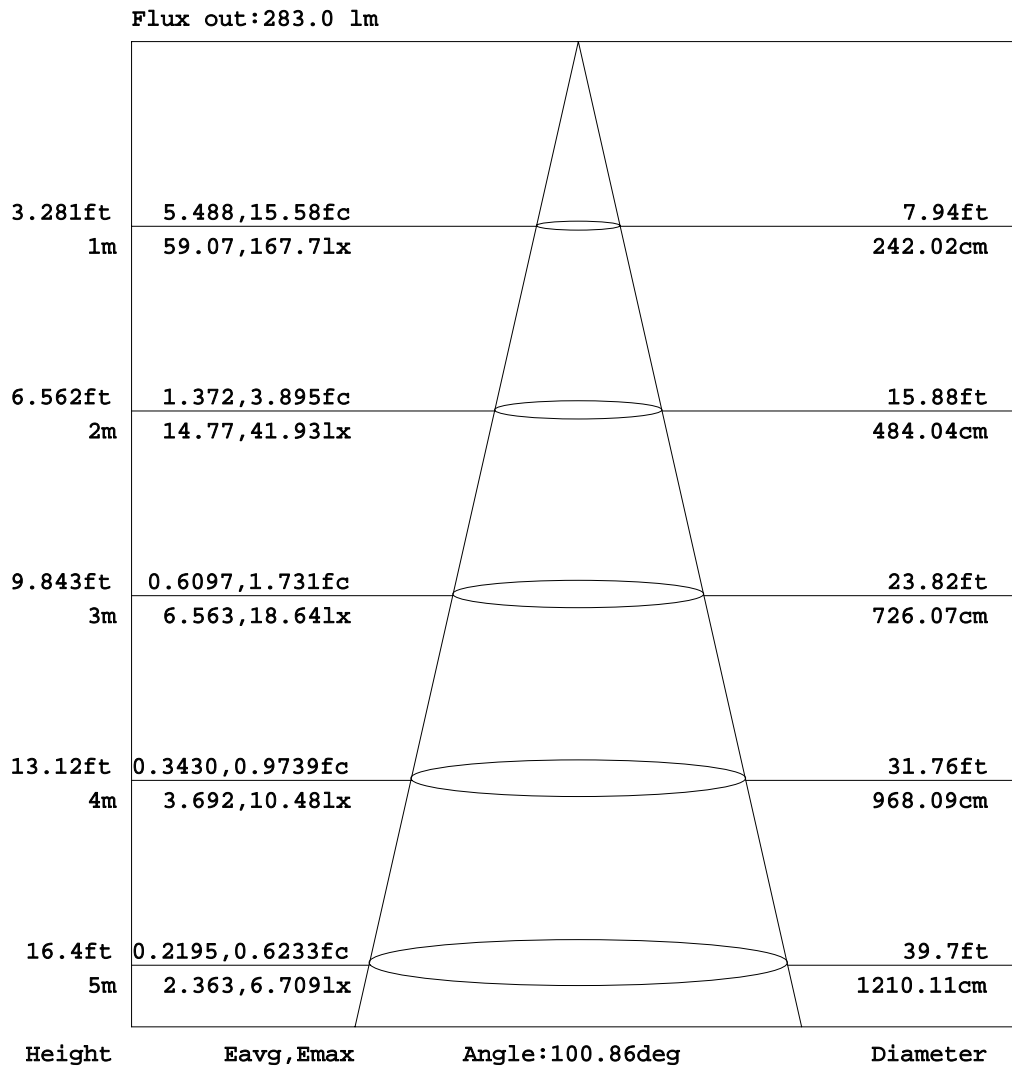


C Range: 0 - 360DEG
 C Interval: 10.0DEG
 Test Speed: HIGH
 Temperature: 25.3DEG
 Operators: 0
 Test Date: 2022-06-11

γ Range: 0 - 180DEG
 γ Interval: 1.0DEG
 Test System: EVERFINE GO-2000B_V1 SYSTEM V2.0.262
 Humidity: 65.0%
 Test Distance: 7.100m [K=1.0000]
 Remarks:

AAI Figure

Test:U:24.00V I:0.3300A P:7.920W PF:1.000 Lamp Flux:422.42x1 lm		
NAME: Fold10-s-3000k-ra90-8w	TYPE:	WEIGHT:
DIM.:	SPEC.:	SERIAL No.:
MFR.: 0	SUR.:	PROTECTION ANGLE:



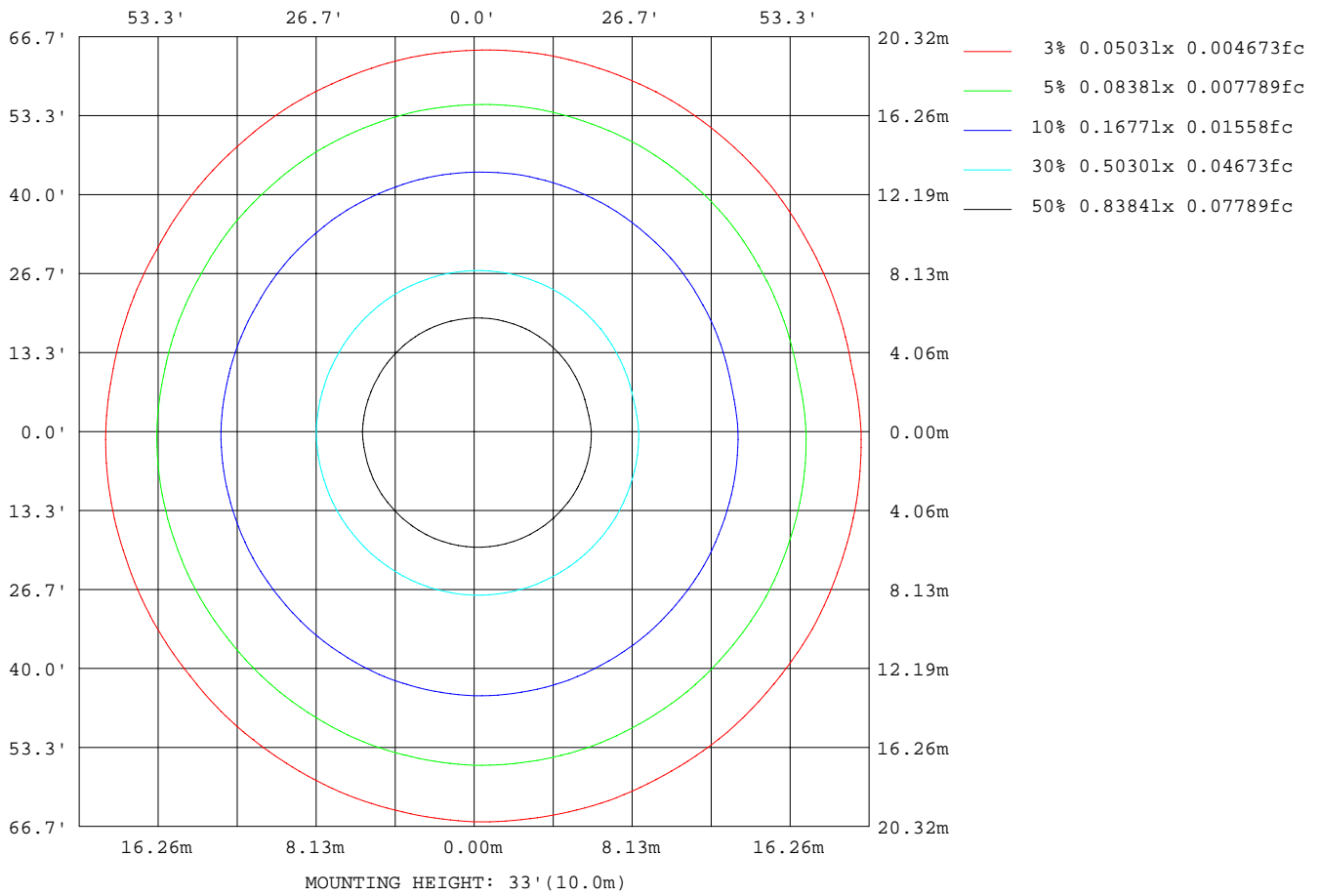
Note:The Curves indicate the illuminated area and the average illumination when the luminaire is at different distance.

C Range: 0 - 360DEG
 C Interval: 10.0DEG
 Test Speed: HIGH
 Temperature:25.3DEG
 Operators:0
 Test Date:2022-06-11

γ Range: 0 - 180DEG
 γ Interval: 1.0DEG
 Test System:EVERFINE GO-2000B_V1 SYSTEM V2.0.262
 Humidity:65.0%
 Test Distance:7.100m [K=1.0000]
 Remarks:

ISOLUX DIAGRAM

Test:U:24.00V I:0.3300A P:7.920W PF:1.000 Lamp Flux:422.42x1 lm		
NAME: Fold10-s-3000k-ra90-8w	TYPE:	WEIGHT:
DIM.:	SPEC.:	SERIAL No.:
MFR.: 0	SUR.:	PROTECTION ANGLE:



C Range: 0 - 360DEG
 C Interval: 10.0DEG
 Test Speed: HIGH
 Temperature: 25.3DEG
 Operators: 0
 Test Date: 2022-06-11

γ Range: 0 - 180DEG
 γ Interval: 1.0DEG
 Test System: EVERFINE GO-2000B_V1 SYSTEM V2.0.262
 Humidity: 65.0%
 Test Distance: 7.100m [K=1.0000]
 Remarks:

Average Luminance Table(CIBSE)

Test:U:24.00V I:0.3300A P:7.920W PF:1.000 Lamp Flux:422.42x1 lm		
NAME: Fold10-s-3000k-ra90-8w	TYPE:	WEIGHT:
DIM.:	SPEC.:	SERIAL No.:
MFR.: 0	SUR.:	PROTECTION ANGLE:

Parameter description for average Luminance	Symbol	Value	Unit
Luminance in Azimuth Plane	Bc	refer Table 2	cd/sq.m.
Intensity at angle Gamma in given azimuth plane	I	from data	cd/klm
Number of lamps	N	1	
Output of each lamp(initial lumens as specified)	F	422.42	lm
Multiplying factor	K	1	
Luminous area in horizontal plane used in calculations	A	0.1	sq.m.
Angle to the downward vertical from light centre	Gamma	from data	deg

Table 1. Calculation parameters for determination of CIBSE LG3:1996 Average Luminance

G deg	C plane(deg)																		
	0	10	20	30	40	50	60	70	80	90	100	110	120	130	140	150	160	170	180
55	1339	1352	1359	1373	1372	1378	1374	1373	1359	1348	1323	1302	1272	1248	1222	1211	1195	1188	1182
60	1281	1297	1307	1325	1326	1336	1332	1333	1318	1305	1275	1252	1215	1188	1156	1140	1119	1111	1100
65	1216	1235	1248	1271	1276	1291	1288	1290	1274	1260	1225	1196	1152	1117	1077	1056	1032	1021	1003
70	1140	1164	1181	1210	1217	1238	1240	1245	1227	1212	1169	1132	1077	1030	979	953	923	909	884
75	1044	1076	1099	1136	1146	1175	1181	1196	1175	1157	1103	1053	974	912	846	812	774	755	714
80	902	947	982	1034	1050	1089	1103	1129	1112	1087	1010	929	814	723	633	583	530	503	439
85	602	684	749	835	869	934	961	1009	1001	963	817	656	459	316	177	110	52	28	0

Table 2. Average Luminance(cd/sq.m.) for defined C plane,Gamma angle

CIBSE Category	Gamma (deg)	Average Luminance		Patch Luminance	
		maximum	specified	maximum	specified
		calculated	maximum	measured	maximum
Category 1	55 to 90	1378	200	---	500
Category 2	65 to 90	1291	200	---	500
Category 3	75 to 90	1196	200	---	500

Table 3. Tabulation of Average and Patch Luminance(cd/sq.m.) for defined CIBSE categories

No match

C Range: 0 - 360DEG
 C Interval: 10.0DEG
 Test Speed: HIGH
 Temperature:25.3DEG
 Operators:0
 Test Date:2022-06-11

γ Range: 0 - 180DEG
 γ Interval: 1.0DEG
 Test System:EVERFINE GO-2000B_V1 SYSTEM V2.0.262
 Humidity:65.0%
 Test Distance:7.100m [K=1.0000]
 Remarks:

Average Luminance Table(CIBSE)

Test:U:24.00V I:0.3300A P:7.920W PF:1.000 Lamp Flux:422.42x1 lm		
NAME: Fold10-s-3000k-ra90-8w	TYPE:	WEIGHT:
DIM.:	SPEC.:	SERIAL No.:
MFR.: 0	SUR.:	PROTECTION ANGLE:

Parameter description for average Luminance	Symbol	Value	Unit
Luminance in Azimuth Plane	Bc	refer Table 2	cd/sq.m.
Intensity at angle Gamma in given azimuth plane	I	from data	cd/klm
Number of lamps	N	1	
Output of each lamp(initial lumens as specified)	F	422.42	lm
Multiplying factor	K	1	
Luminous area in horizontal plane used in calculations	A	0.1	sq.m.
Angle to the downward vertical from light centre	Gamma	from data	deg

Table 1. Calculation parameters for determination of CIBSE LG3:2001 Average Luminance

G deg	C plane(deg)																		
	0	10	20	30	40	50	60	70	80	90	100	110	120	130	140	150	160	170	180
55	1339	1352	1359	1373	1372	1378	1374	1373	1359	1348	1323	1302	1272	1248	1222	1211	1195	1188	1182
60	1281	1297	1307	1325	1326	1336	1332	1333	1318	1305	1275	1252	1215	1188	1156	1140	1119	1111	1100
65	1216	1235	1248	1271	1276	1291	1288	1290	1274	1260	1225	1196	1152	1117	1077	1056	1032	1021	1003
70	1140	1164	1181	1210	1217	1238	1240	1245	1227	1212	1169	1132	1077	1030	979	953	923	909	884
75	1044	1076	1099	1136	1146	1175	1181	1196	1175	1157	1103	1053	974	912	846	812	774	755	714
80	902	947	982	1034	1050	1089	1103	1129	1112	1087	1010	929	814	723	633	583	530	503	439
85	602	684	749	835	869	934	961	1009	1001	963	817	656	459	316	177	110	52	28	0

Table 2. Average Luminance(cd/sq.m.) for defined C plane,Gamma angle

range (deg)	Maximum measured	Average Luminance(cd/sq.m)			
		Maximum limit for screen type & software category used			
		Type I,II screen Some neg.s'ware	Type I,II screen Only pos.s'ware	Type III screen Some neg.s'ware	Type III screen Only pos.s'ware
55 to 90	1378	1000	1500	200	500
65 to 90	1291	1000	1500	200	500

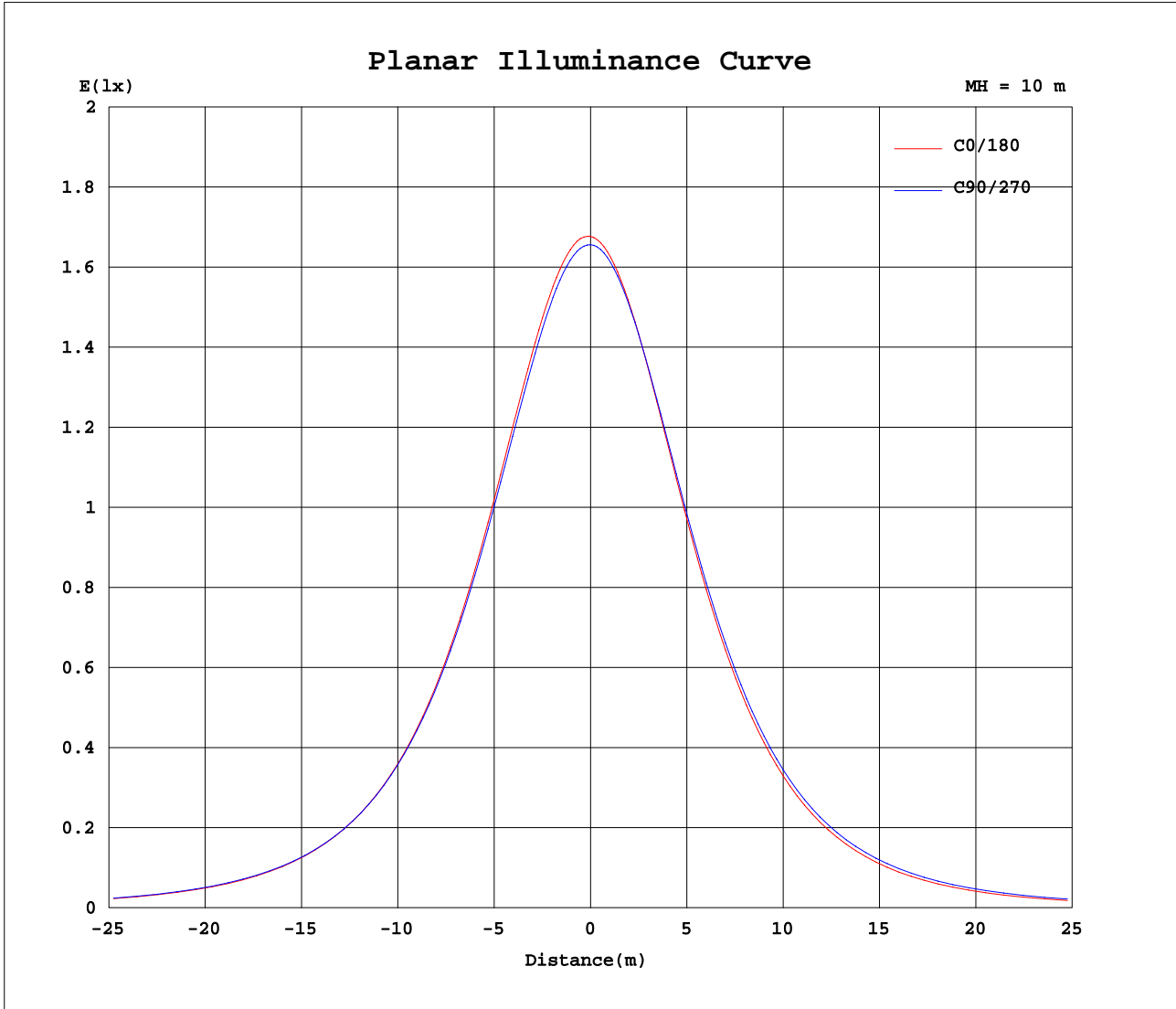
Table 3. Tabulation of average luminance(cd/sq.m.) and luminance limits

No match

C Range: 0 - 360DEG
 C Interval: 10.0DEG
 Test Speed: HIGH
 Temperature:25.3DEG
 Operators:0
 Test Date:2022-06-11

γ Range: 0 - 180DEG
 γ Interval: 1.0DEG
 Test System:EVERFINE GO-2000B_V1 SYSTEM V2.0.262
 Humidity:65.0%
 Test Distance:7.100m [K=1.0000]
 Remarks:

Planar Illuminance Curve



C Range: 0 - 360DEG
C Interval: 10.0DEG
Test Speed: HIGH
Temperature: 25.3DEG
Operators: 0
Test Date: 2022-06-11

γ Range: 0 - 180DEG
 γ Interval: 1.0DEG
Test System: EVERFINE GO-2000B_V1 SYSTEM V2.0.262
Humidity: 65.0%
Test Distance: 7.100m [K=1.0000]
Remarks:

LUMINOUS DISTRIBUTION INTENSITY DATA

Test:U:24.00V I:0.3300A P:7.920W PF:1.000 Lamp Flux:422.42x1 lm		
NAME: Fold10-s-3000k-ra90-8w	TYPE:	WEIGHT:
DIM.:	SPEC.:	SERIAL No.:
MFR.: 0	SUR.:	PROTECTION ANGLE:

Table--1

UNIT: cd

C(DEG) γ (DEG)	0	10	20	30	40	50	60	70	80	90	100	110	120	130	140	150	160	170	180
0	168	167	167	166	166	166	166	166	166	166	166	165	165	165	165	165	166	165	168
5	167	167	167	166	166	166	166	165	165	165	165	164	164	164	164	164	164	164	166
10	165	165	164	164	164	164	163	163	162	162	161	161	161	160	160	160	160	160	162
15	160	160	160	160	159	159	159	158	158	157	157	156	155	155	154	154	154	154	156
20	154	154	154	154	153	153	152	152	151	151	150	149	148	148	147	147	147	147	148
25	145	146	146	146	145	145	145	144	143	143	142	141	140	139	138	138	138	138	139
30	136	136	136	136	136	136	135	135	134	134	132	132	130	129	129	128	128	128	128
35	125	126	126	126	126	126	125	125	124	123	122	121	120	119	118	117	117	117	117
40	114	114	114	115	115	115	114	114	113	113	111	110	109	108	106	106	105	105	105
45	102	102	103	103	103	103	103	103	102	101	99.8	98.6	97.0	95.8	94.6	94.0	93.3	93.0	93.1
50	89.4	90.1	90.4	91.1	91.0	91.2	90.9	90.8	90.0	89.3	87.9	86.7	85.1	83.8	82.4	81.8	81.0	80.7	80.6
55	76.8	77.5	78.0	78.7	78.7	79.1	78.8	78.7	78.0	77.3	75.9	74.7	72.9	71.6	70.1	69.4	68.5	68.1	67.8
60	64.0	64.9	65.3	66.3	66.3	66.8	66.6	66.6	65.9	65.3	63.8	62.6	60.8	59.4	57.8	57.0	56.0	55.5	55.0
65	51.4	52.2	52.8	53.7	53.9	54.6	54.4	54.5	53.8	53.3	51.8	50.5	48.7	47.2	45.5	44.6	43.6	43.1	42.4
70	39.0	39.8	40.4	41.4	41.6	42.3	42.4	42.6	42.0	41.4	40.0	38.7	36.8	35.2	33.5	32.6	31.6	31.1	30.2
75	27.0	27.9	28.4	29.4	29.7	30.4	30.6	31.0	30.4	30.0	28.5	27.3	25.2	23.6	21.9	21.0	20.0	19.5	18.5
80	15.7	16.4	17.1	17.9	18.2	18.9	19.2	19.6	19.3	18.9	17.5	16.1	14.1	12.6	11.0	10.1	9.21	8.73	7.62
85	5.24	5.96	6.53	7.28	7.58	8.14	8.38	8.80	8.72	8.39	7.12	5.72	4.00	2.75	1.54	0.96	0.45	0.24	0.00
90	0.00	0.00	0.00	0.00	0.02	0.06	0.10	0.24	0.09	0.00	0.00	0.00	0.00	0.00	0.00	0.00	0.00	0.00	0.00
95	0.00	0.00	0.00	0.00	0.00	0.00	0.00	0.00	0.00	0.00	0.00	0.00	0.00	0.00	0.00	0.00	0.00	0.00	0.00
100	0.00	0.00	0.00	0.00	0.00	0.00	0.00	0.00	0.00	0.00	0.00	0.00	0.00	0.00	0.00	0.00	0.00	0.00	0.00
105	0.00	0.00	0.00	0.00	0.00	0.00	0.00	0.00	0.00	0.00	0.00	0.01	0.00	0.01	0.00	0.01	0.00	0.01	0.01
110	0.00	0.02	0.00	0.02	0.00	0.03	0.00	0.04	0.00	0.04	0.00	0.05	0.00	0.05	0.00	0.05	0.00	0.05	0.06
115	0.02	0.06	0.01	0.06	0.02	0.06	0.02	0.08	0.03	0.09	0.04	0.09	0.05	0.09	0.05	0.09	0.04	0.09	0.09
120	0.06	0.11	0.06	0.10	0.07	0.10	0.07	0.12	0.08	0.13	0.09	0.14	0.09	0.14	0.09	0.13	0.09	0.14	0.14
125	0.11	0.15	0.10	0.16	0.10	0.16	0.11	0.17	0.12	0.17	0.13	0.18	0.14	0.18	0.13	0.18	0.13	0.17	0.18
130	0.15	0.20	0.15	0.19	0.15	0.20	0.16	0.21	0.17	0.22	0.18	0.23	0.18	0.22	0.18	0.22	0.17	0.22	0.23
135	0.20	0.24	0.20	0.25	0.20	0.25	0.21	0.26	0.21	0.27	0.22	0.27	0.22	0.27	0.23	0.27	0.22	0.27	0.28
140	0.24	0.29	0.24	0.29	0.25	0.29	0.25	0.30	0.26	0.31	0.27	0.31	0.26	0.31	0.26	0.31	0.26	0.31	0.32
145	0.29	0.33	0.28	0.34	0.29	0.34	0.29	0.34	0.29	0.35	0.30	0.35	0.32	0.35	0.31	0.35	0.31	0.36	0.36
150	0.33	0.38	0.33	0.37	0.32	0.37	0.33	0.38	0.33	0.39	0.34	0.40	0.34	0.39	0.35	0.39	0.34	0.40	0.40
155	0.37	0.42	0.37	0.41	0.36	0.42	0.37	0.42	0.37	0.42	0.38	0.42	0.38	0.43	0.38	0.42	0.38	0.43	0.44
160	0.41	0.45	0.40	0.44	0.40	0.45	0.41	0.46	0.41	0.45	0.41	0.46	0.41	0.47	0.42	0.46	0.42	0.46	0.48
165	0.44	0.49	0.43	0.49	0.44	0.48	0.44	0.48	0.43	0.48	0.44	0.49	0.44	0.49	0.44	0.48	0.44	0.49	0.49
170	0.47	0.50	0.47	0.50	0.46	0.49	0.46	0.51	0.47	0.49	0.46	0.50	0.46	0.49	0.47	0.49	0.48	0.49	0.50
175	0.49	0.50	0.48	0.51	0.48	0.49	0.48	0.51	0.48	0.50	0.49	0.50	0.48	0.49	0.48	0.49	0.49	0.50	0.50
180	0.50	0.50	0.51	0.51	0.50	0.50	0.50	0.50	0.49	0.50	0.50	0.50	0.50	0.50	0.50	0.50	0.50	0.50	0.50

C Range: 0 - 360DEG
 C Interval: 10.0DEG
 Test Speed: HIGH
 Temperature:25.3DEG
 Operators:0
 Test Date:2022-06-11

γ Range: 0 - 180DEG
 γ Interval: 1.0DEG
 Test System:EVERFINE GO-2000B_V1 SYSTEM V2.0.262
 Humidity:65.0%
 Test Distance:7.100m [K=1.0000]
 Remarks:

LUMINOUS DISTRIBUTION INTENSITY DATA

Test:U:24.00V I:0.3300A P:7.920W PF:1.000 Lamp Flux:422.42x1 lm		
NAME: Fold10-s-3000k-ra90-8w	TYPE:	WEIGHT:
DIM.:	SPEC.:	SERIAL No.:
MFR.: 0	SUR.:	PROTECTION ANGLE:

Table--2

UNIT: cd

C(DEG) γ (DEG)	190	200	210	220	230	240	250	260	270	280	290	300	310	320	330	340	350		
0	167	167	166	166	166	166	166	166	166	166	165	165	165	165	165	166	165		
5	165	165	164	164	164	164	164	164	164	164	165	165	165	165	165	165	165		
10	161	160	160	160	160	160	160	161	161	161	161	162	162	162	162	162	162		
15	155	154	154	154	154	155	155	155	156	156	157	157	157	157	157	157	158		
20	147	147	146	146	147	147	148	148	149	149	150	150	151	151	151	151	151		
25	138	137	137	137	138	138	139	140	140	141	142	142	142	143	143	143	143		
30	127	127	127	127	128	128	129	130	131	132	132	133	133	133	133	133	133		
35	116	116	116	116	117	118	118	120	120	121	122	122	123	123	123	123	123		
40	104	104	104	104	105	106	107	108	109	110	111	111	111	112	111	111	111		
45	92.0	91.7	91.5	92.4	93.1	94.3	95.2	96.6	97.4	98.5	99.0	99.6	99.7	99.9	99.5	99.4	99.3		
50	79.5	79.2	79.0	80.0	80.8	82.1	83.1	84.5	85.4	86.5	86.9	87.6	87.7	87.8	87.3	87.2	87.1		
55	66.7	66.5	66.4	67.5	68.3	69.8	70.8	72.3	73.2	74.3	74.7	75.3	75.4	75.5	74.9	74.8	74.6		
60	54.0	53.8	53.8	55.0	55.9	57.4	58.5	60.1	61.0	62.0	62.4	63.1	63.0	63.1	62.4	62.2	62.0		
65	41.5	41.3	41.4	42.5	43.6	45.2	46.4	47.9	48.9	49.9	50.3	50.8	50.7	50.6	49.9	49.7	49.5		
70	29.3	29.2	29.2	30.4	31.5	33.2	34.5	36.1	37.0	38.0	38.3	38.8	38.5	38.4	37.6	37.5	37.3		
75	17.7	17.6	17.7	18.8	19.8	21.5	22.9	24.5	25.4	26.4	26.6	26.9	26.6	26.5	25.8	25.6	25.5		
80	6.92	6.84	6.95	7.95	8.90	10.4	11.7	13.5	14.4	15.3	15.3	15.5	15.2	15.1	14.5	14.4	14.3		
85	0.00	0.00	0.00	0.00	0.32	1.18	2.00	3.36	4.19	4.89	4.85	5.06	4.80	4.82	4.31	4.30	4.13		
90	0.00	0.00	0.00	0.00	0.00	0.00	0.00	0.00	0.00	0.00	0.00	0.00	0.00	0.00	0.00	0.00	0.00		
95	0.00	0.00	0.00	0.00	0.00	0.00	0.00	0.00	0.00	0.00	0.00	0.00	0.00	0.00	0.00	0.00	0.00		
100	0.00	0.00	0.00	0.00	0.00	0.00	0.00	0.00	0.00	0.00	0.00	0.00	0.00	0.00	0.00	0.00	0.00		
105	0.00	0.02	0.00	0.01	0.00	0.02	0.00	0.03	0.00	0.01	0.00	0.01	0.00	0.00	0.00	0.00	0.00		
110	0.01	0.06	0.02	0.06	0.02	0.06	0.02	0.06	0.01	0.06	0.00	0.04	0.00	0.03	0.00	0.03	0.00		
115	0.05	0.10	0.06	0.11	0.06	0.11	0.06	0.11	0.06	0.09	0.05	0.09	0.04	0.08	0.02	0.07	0.02		
120	0.09	0.16	0.11	0.15	0.11	0.15	0.10	0.15	0.10	0.15	0.09	0.13	0.07	0.11	0.07	0.11	0.07		
125	0.14	0.19	0.15	0.19	0.15	0.19	0.15	0.19	0.14	0.18	0.14	0.17	0.12	0.16	0.11	0.16	0.11		
130	0.18	0.24	0.20	0.24	0.19	0.24	0.19	0.24	0.19	0.22	0.17	0.21	0.17	0.20	0.16	0.20	0.16		
135	0.24	0.28	0.24	0.28	0.24	0.28	0.24	0.28	0.23	0.27	0.22	0.26	0.22	0.25	0.21	0.25	0.20		
140	0.28	0.32	0.28	0.33	0.28	0.32	0.28	0.32	0.27	0.32	0.26	0.31	0.25	0.30	0.25	0.29	0.25		
145	0.32	0.36	0.32	0.37	0.32	0.36	0.32	0.35	0.31	0.36	0.31	0.34	0.30	0.34	0.29	0.34	0.29		
150	0.35	0.40	0.35	0.41	0.35	0.40	0.35	0.40	0.35	0.39	0.34	0.38	0.34	0.38	0.33	0.36	0.33		
155	0.39	0.44	0.40	0.44	0.39	0.43	0.39	0.43	0.39	0.42	0.38	0.42	0.37	0.42	0.37	0.41	0.37		
160	0.42	0.47	0.42	0.47	0.42	0.47	0.42	0.46	0.42	0.46	0.42	0.45	0.40	0.45	0.40	0.45	0.40		
165	0.45	0.50	0.46	0.50	0.45	0.50	0.44	0.49	0.45	0.49	0.44	0.49	0.44	0.48	0.43	0.48	0.43		
170	0.48	0.50	0.48	0.50	0.47	0.50	0.47	0.50	0.47	0.50	0.46	0.49	0.46	0.49	0.46	0.49	0.46		
175	0.50	0.51	0.49	0.50	0.49	0.50	0.49	0.50	0.48	0.50	0.49	0.49	0.48	0.49	0.48	0.49	0.48		
180	0.50	0.51	0.50	0.50	0.50	0.50	0.50	0.50	0.50	0.50	0.50	0.50	0.50	0.50	0.50	0.50	0.50		

C Range: 0 - 360DEG
 C Interval: 10.0DEG
 Test Speed: HIGH
 Temperature:25.3DEG
 Operators:0
 Test Date:2022-06-11

γ Range: 0 - 180DEG
 γ Interval: 1.0DEG
 Test System:EVERFINE GO-2000B_V1 SYSTEM V2.0.262
 Humidity:65.0%
 Test Distance:7.100m [K=1.0000]
 Remarks: