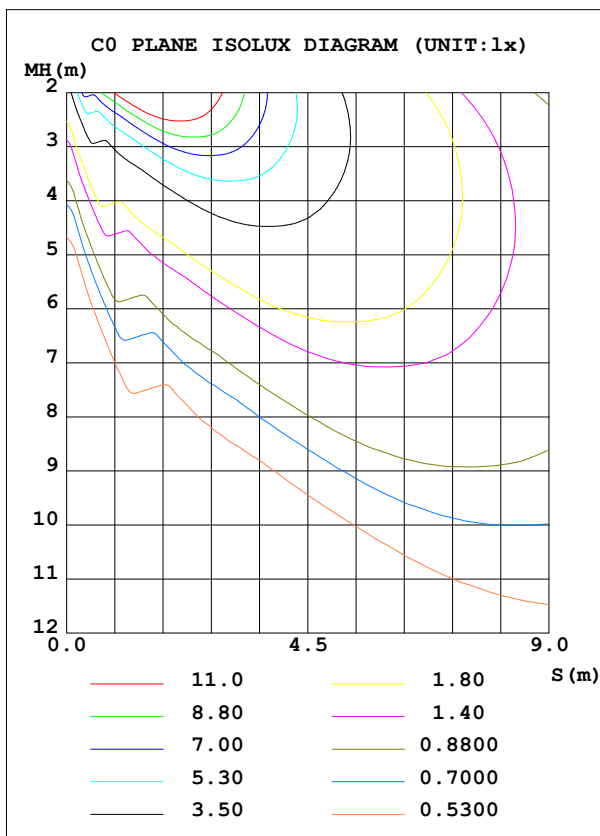
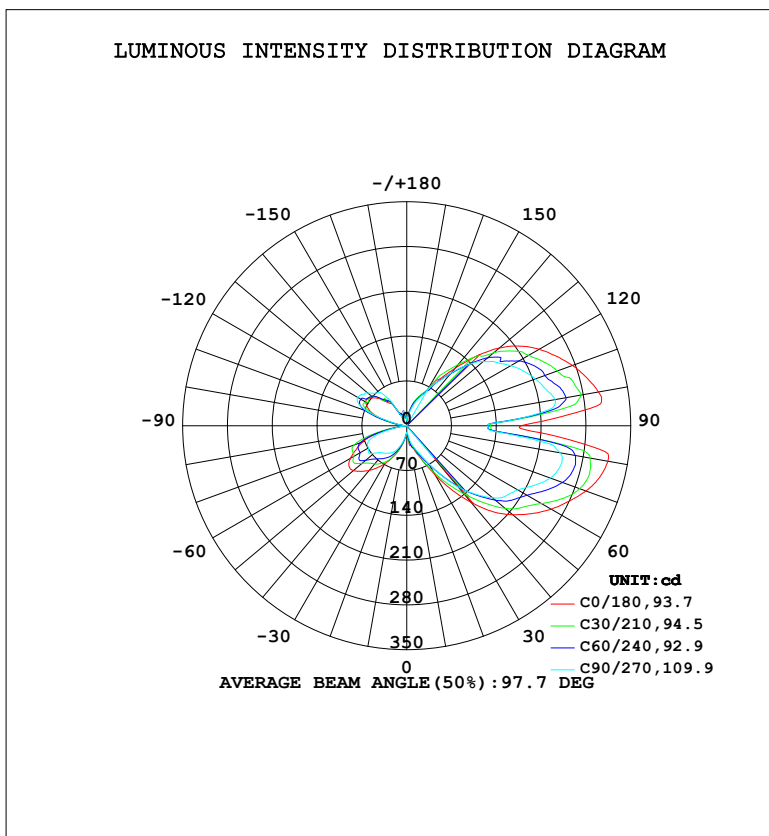


LUMINAIRE PHOTOMETRIC TEST REPORT

Test:U:120.26V I:0.6911A P:82.768W PF:0.9958 Freq:60.01Hz Lamp Flux:1446.46x1 lm		
NAME:	TYPE:	WEIGHT:
SPEC.:	DIM.:	SERIAL No.:
MFR.:	SUR.:	Shielding Angle:

DATA OF LAMP		PHOTOMETRIC DATA			
MODEL	HF7012-AB	Imax (cd)	319.3	S/MH (C0/180)	3.91
NOMINAL POWER (W)		LOR (%)	100.0	S/MH (C90/270)	3.78
RATED VOLTAGE (V)	120	TOTAL FLUX (lm)	1446.5	η UP, DN (C0-180)	37.7, 40.3
NOMINAL FLUX (lm)	1446.46	CIE CLASS	DIFFUSE	η UP, DN (C180-360)	10.4, 11.5
LAMPS INSIDE	1	η up (%)	48.1	CIBSE SHR NOM	1.25
TEST VOLTAGE (V)	120.267	η down (%)	51.9	CIBSE SHR MAX	1.35



C Range: 0 - 360DEG
 C Interval: 15.0DEG
 Test Speed: HIGH
 Temperature: 24.5°C
 Operators: Dingmin Zhang
 Test Date: 2025-12-05

γ Range: 0 - 180DEG
 γ Interval: 0.5DEG
 Test System: EVERFINE GO-R5000_V2 SYSTEM V2.00.463
 Humidity: 65.0%
 Test Distance: 30.000m [K=0.9305]
 Remarks:

ZONAL FLUX DIAGRAM

ZONAL FLUX DIAGRAM:

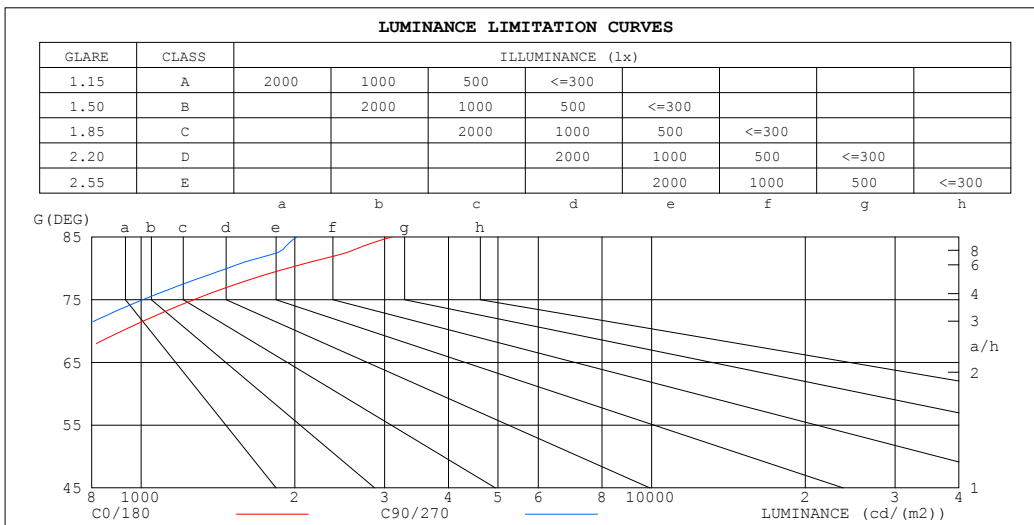
γ	C0	C45	C90	C135	C180	C225	C270	C315	γ	Φ zone	Φ total	%lum, lamp
10	31.61	29.39	18.89	19.55	23.40	23.26	20.94	19.94	0- 10	1.646	1.646	0.11,0.11
20	45.98	39.74	38.48	32.68	44.54	40.70	36.31	32.72	10- 20	8.659	10.31	0.71,0.71
30	87.94	72.71	67.72	63.53	68.26	61.01	49.14	50.23	20- 30	23.34	33.65	2.33,2.33
40	155.9	129.4	124.6	127.0	91.42	78.37	55.99	69.72	30- 40	52.12	85.77	5.93,5.93
50	216.4	182.2	175.1	178.7	109.1	86.87	66.96	70.90	40- 50	91.56	177.3	12.3,12.3
60	260.7	238.5	200.4	229.8	101.6	98.84	69.48	75.50	50- 60	131.1	308.5	21.3,21.3
70	297.9	271.8	238.7	253.7	72.82	80.80	59.51	48.30	60- 70	161.1	469.5	32.5,32.5
80	319.0	290.5	243.2	279.0	19.33	23.93	16.12	10.83	70- 80	166.9	636.4	44,44
90	178.8	138.8	127.1	158.2	0	0	0	0	80- 90	114.0	750.4	51.9,51.9
100	304.2	269.3	235.4	263.6	16.04	17.56	14.92	20.77	90-100	119.7	870.1	60.2,60.2
110	275.6	259.3	213.8	242.6	56.93	66.11	63.51	79.35	100-110	158.7	1029	71.1,71.1
120	239.1	210.3	187.7	198.1	74.09	68.87	88.31	88.10	110-120	151.3	1180	81.6,81.6
130	189.4	155.1	156.5	149.5	68.21	65.60	79.55	88.14	120-130	118.4	1298	89.8,89.8
140	116.9	111.4	107.3	110.2	48.45	53.16	67.72	65.54	130-140	79.14	1378	95.2,95.2
150	66.41	67.04	62.98	69.97	24.68	27.36	19.82	34.22	140-150	41.93	1420	98.1,98.1
160	41.19	42.56	39.82	44.70	17.22	16.31	16.23	20.34	150-160	17.63	1437	99.4,99.4
170	23.27	20.36	19.86	26.61	19.16	23.07	22.85	22.55	160-170	7.660	1445	99.9,99.9
180	8.545	9.216	9.204	10.11	8.371	9.040	8.957	10.38	170-180	1.626	1446	100,100
DEG	LUMINOUS INTENSITY:cd									UNIT:lm		

C Range: 0 - 360DEG
 C Interval: 15.0DEG
 Test Speed: HIGH
 Temperature:24.5°C
 Operators:Dingmin Zhang
 Test Date:2025-12-05

γ Range: 0 - 180DEG
 γ Interval: 0.5DEG
 Test System:EVERFINE GO-R5000_V2 SYSTEM V2.00.463
 Humidity:65.0%
 Test Distance:30.000m [K=0.9305]
 Remarks:

LUMINANCE LIMITATION CURVES

Test:U:120.26V I:0.6911A P:82.768W PF:0.9958 Freq:60.01Hz Lamp Flux:1446.46x1 lm		
NAME:	TYPE:	WEIGHT:
SPEC.:	DIM.:	SERIAL No.:
MFR.:	SUR.:	Shielding Angle:



LUMINANCE cd/(m2)		
G (DEG)	C0/180	C90/270
85	3102	2020
80	1934	1475
75	1269	1008
70	917	735
65	696	548
60	549	422
55	439	350
50	354	287
45	282	225

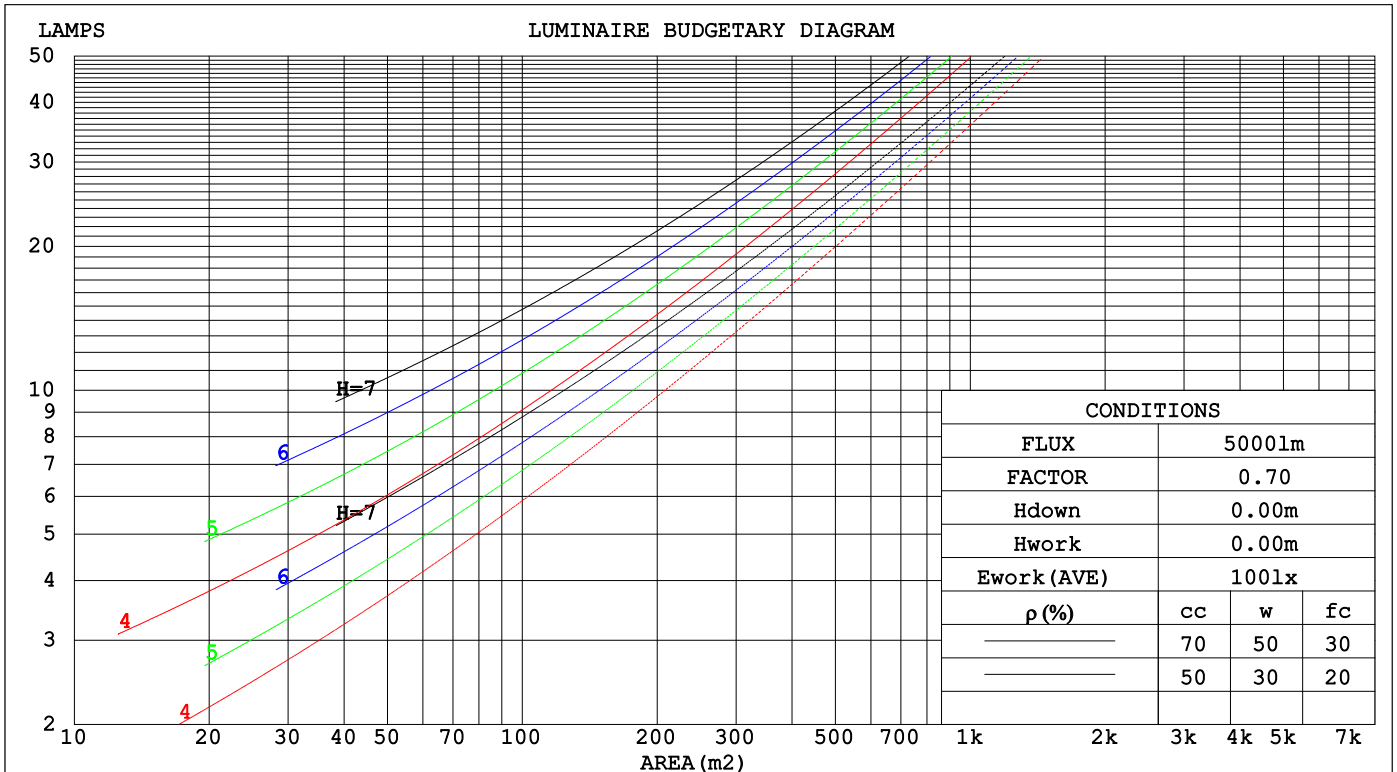
C Range: 0 - 360DEG
 C Interval: 15.0DEG
 Test Speed: HIGH
 Temperature: 24.5°C
 Operators: Dingmin Zhang
 Test Date: 2025-12-05

γ Range: 0 - 180DEG
 γ Interval: 0.5DEG
 Test System: EVERFINE GO-R5000_V2 SYSTEM V2.00.463
 Humidity: 65.0%
 Test Distance: 30.000m [K=0.9305]
 Remarks:

CU AND LUMINAIRE BUDGETARY ESTIMATE DIAGRAM

Test:U:120.26V I:0.6911A P:82.768W PF:0.9958 Freq:60.01Hz		
Lamp Flux:1446.46x1 lm		
NAME:	TYPE:	WEIGHT:
SPEC.:	DIM.:	SERIAL No.:
MFR.:	SUR.:	Shielding Angle:

pcc	80%			70%			50%			30%			10%			0
pw	50%	30%	10%	50%	30%	10%	50%	30%	10%	50%	30%	10%	50%	30%	10%	0
pfc	20%			20%			20%			20%			20%			0
RCR	RCR:Room Cavity Ratio						Coefficients of Utilization(CU)									
0.0	1.08	1.08	1.08	.99	.99	.99	.84	.84	.84	.71	.71	.71	.58	.58	.58	.52
1.0	.87	.81	.76	.80	.75	.70	.67	.63	.59	.55	.52	.49	.43	.41	.39	.34
2.0	.72	.64	.57	.66	.59	.53	.55	.49	.44	.44	.40	.36	.35	.31	.28	.23
3.0	.62	.52	.45	.56	.48	.41	.46	.40	.34	.37	.32	.28	.29	.25	.21	.17
4.0	.53	.43	.36	.48	.40	.33	.40	.33	.27	.32	.26	.22	.24	.20	.17	.13
5.0	.46	.37	.29	.42	.33	.27	.35	.28	.22	.28	.22	.18	.21	.17	.13	.10
6.0	.41	.31	.24	.37	.29	.22	.31	.24	.18	.24	.19	.15	.18	.14	.11	.08
7.0	.36	.27	.21	.33	.25	.19	.27	.20	.16	.22	.16	.12	.16	.12	.09	.06
8.0	.33	.24	.18	.30	.22	.16	.25	.18	.13	.20	.14	.10	.15	.11	.08	.05
9.0	.29	.21	.15	.27	.19	.14	.22	.16	.11	.18	.13	.09	.14	.09	.06	.04
10.0	.27	.19	.13	.25	.17	.12	.20	.14	.10	.16	.11	.08	.12	.08	.06	.03



C Range: 0 - 360DEG
 C Interval: 15.0DEG
 Test Speed: HIGH
 Temperature:24.5°C
 Operators:Dingmin Zhang
 Test Date:2025-12-05

γ Range: 0 - 180DEG
 γ Interval: 0.5DEG
 Test System:EVERFINE GO-R5000_V2 SYSTEM V2.00.463
 Humidity:65.0%
 Test Distance:30.000m [K=0.9305]
 Remarks:

WEC AND CCEC

Test:U:120.26V I:0.6911A P:82.768W PF:0.9958 Freq:60.01Hz								
Lamp Flux:1446.46x1 lm								
NAME:			TYPE:			WEIGHT:		
SPEC.:			DIM.:			SERIAL No.:		
MFR.:			SUR.:			Shielding Angle:		

ρ _{cc}	80%			70%			50%			30%			10%			0
ρ _w	50%	30%	10%	50%	30%	10%	50%	30%	10%	50%	30%	10%	50%	30%	10%	0
ρ _{fc}	20%			20%			20%			20%			20%			0
RCR	RCR:Room Cavity Ratio						Wall Exitance Coefficients(WEC)									
0.0																
1.0	.414	.235	.075	.392	.224	.071	.351	.201	.064	.313	.181	.058	.279	.161	.052	
2.0	.353	.193	.059	.333	.183	.056	.295	.164	.051	.261	.146	.046	.229	.129	.041	
3.0	.310	.165	.049	.291	.156	.047	.257	.139	.042	.225	.123	.038	.196	.108	.034	
4.0	.276	.143	.042	.259	.136	.040	.227	.121	.036	.198	.106	.032	.171	.093	.028	
5.0	.248	.127	.037	.233	.120	.035	.204	.106	.031	.177	.093	.028	.152	.081	.024	
6.0	.226	.113	.032	.212	.107	.031	.185	.095	.028	.160	.083	.024	.137	.072	.021	
7.0	.207	.102	.029	.194	.097	.028	.169	.086	.025	.146	.075	.022	.124	.065	.019	
8.0	.191	.093	.026	.179	.088	.025	.156	.078	.022	.134	.068	.020	.114	.059	.017	
9.0	.177	.086	.024	.166	.081	.023	.145	.072	.020	.125	.062	.018	.106	.054	.015	
10.0	.165	.079	.022	.155	.075	.021	.135	.066	.019	.116	.058	.016	.098	.049	.014	

ρ _{cc}	80%			70%			50%			30%			10%			0
ρ _w	50%	30%	10%	50%	30%	10%	50%	30%	10%	50%	30%	10%	50%	30%	10%	0
ρ _{fc}	20%			20%			20%			20%			20%			0
RCR	RCR:Room Cavity Ratio						Ceiling Cavity Exitance Coefficients(CCEC)									
0.0	.557	.557	.557	.476	.476	.476	.325	.325	.325	.187	.187	.187	.060	.060	.060	
1.0	.557	.525	.496	.477	.450	.427	.326	.310	.295	.188	.179	.172	.060	.058	.055	
2.0	.553	.504	.463	.473	.434	.400	.324	.300	.279	.187	.175	.164	.060	.056	.053	
3.0	.546	.489	.443	.468	.422	.384	.322	.293	.269	.186	.171	.159	.060	.056	.052	
4.0	.539	.477	.430	.463	.412	.374	.318	.287	.263	.184	.168	.156	.059	.055	.051	
5.0	.532	.468	.422	.457	.405	.367	.315	.283	.259	.182	.166	.154	.059	.054	.051	
6.0	.525	.461	.416	.451	.399	.362	.311	.280	.256	.181	.164	.152	.058	.054	.050	
7.0	.518	.455	.411	.445	.394	.358	.308	.277	.254	.179	.163	.151	.058	.053	.050	
8.0	.511	.450	.408	.440	.390	.356	.304	.274	.252	.177	.162	.150	.057	.053	.050	
9.0	.505	.445	.405	.435	.387	.354	.301	.272	.251	.176	.161	.150	.057	.053	.050	
10.0	.499	.442	.403	.430	.383	.352	.298	.270	.250	.174	.160	.149	.056	.052	.049	

C Range: 0 - 360DEG
 C Interval: 15.0DEG
 Test Speed: HIGH
 Temperature:24.5°C
 Operators:Dingmin Zhang
 Test Date:2025-12-05

γ Range: 0 - 180DEG
 γ Interval: 0.5DEG
 Test System:EVERFINE GO-R5000_V2 SYSTEM V2.00.463
 Humidity:65.0%
 Test Distance:30.000m [K=0.9305]
 Remarks:

UGR(Unified Glare Rating) Table

Test:U:120.26V I:0.6911A P:82.768W PF:0.9958 Freq:60.01Hz										
Lamp Flux:1446.46x1 lm										
NAME:			TYPE:			WEIGHT:				
SPEC.:			DIM.:			SERIAL No.:				
MFR.:			SUR.:			Shielding Angle:				
ceiling/cavity	0.7	0.7	0.5	0.5	0.3	0.7	0.7	0.5	0.5	0.3
walls	0.5	0.3	0.5	0.3	0.3	0.5	0.3	0.5	0.3	0.3
working plane	0.2	0.2	0.2	0.2	0.2	0.2	0.2	0.2	0.2	0.2
Room dimensions	Viewed crosswise					Viewed endwise				
x = 2H y = 2H	9.5	10.6	10.3	11.5	12.6	8.2	9.4	9.1	10.3	11.4
3H	13.5	14.5	14.3	15.4	16.6	12.2	13.2	13.0	14.1	15.3
4H	15.6	16.6	16.5	17.5	18.7	14.3	15.2	15.1	16.2	17.4
6H	17.9	18.8	18.8	19.8	21.0	16.5	17.4	17.4	18.3	19.5
8H	19.1	20.0	20.0	20.9	22.2	17.6	18.4	18.5	19.4	20.6
12H	20.1	21.0	21.0	21.9	23.2	18.4	19.2	19.3	20.2	21.4
4H 2H	10.5	11.5	11.4	12.4	13.6	9.7	10.7	10.6	11.7	12.8
3H	14.6	15.4	15.5	16.4	17.6	13.6	14.4	14.5	15.4	16.6
4H	16.8	17.6	17.8	18.6	19.8	15.7	16.5	16.7	17.5	18.7
6H	19.3	20.0	20.3	21.0	22.2	18.1	18.8	19.0	19.7	21.0
8H	20.6	21.2	21.5	22.2	23.5	19.2	19.9	20.2	20.8	22.1
12H	21.6	22.2	22.6	23.2	24.5	20.1	20.7	21.1	21.7	23.0
8H 4H	17.5	18.2	18.5	19.1	20.4	16.7	17.3	17.6	18.3	19.6
6H	20.2	20.7	21.2	21.7	23.0	19.2	19.8	20.2	20.8	22.1
8H	21.6	22.1	22.6	23.1	24.4	20.5	21.0	21.5	22.0	23.3
12H	22.7	23.1	23.7	24.1	25.5	21.5	22.0	22.5	23.0	24.3
12H 4H	17.7	18.3	18.6	19.3	20.6	17.0	17.6	17.9	18.6	19.9
6H	20.5	20.9	21.4	22.0	23.3	19.6	20.1	20.6	21.1	22.4
8H	21.9	22.3	22.9	23.3	24.7	21.0	21.4	22.0	22.4	23.7
Variations with the observer position at spacings(CIE Pub.117):										
S = 1.0H	+ 0.1 / - 0.1					+ 0.1 / - 0.1				
1.5H	+ 0.2 / - 0.2					+ 0.2 / - 0.3				
2.0H	+ 0.2 / - 0.4					+ 0.3 / - 0.4				

CIE Pub.117, 1446 lm Total Lamp Luminous Flux Corrected (8log(F/F0) = 1.3)
 Area: 0.94985 m2

C Range: 0 - 360DEG	γ Range: 0 - 180DEG
C Interval: 15.0DEG	γ Interval: 0.5DEG
Test Speed: HIGH	Test System:EVERFINE GO-R5000_V2 SYSTEM V2.00.463
Temperature:24.5°C	Humidity:65.0%
Operators:Dingmin Zhang	Test Distance:30.000m [K=0.9305]
Test Date:2025-12-05	Remarks:

UTILIZATION FACTORS TABLE

Test:U:120.26V I:0.6911A P:82.768W PF:0.9958 Freq:60.01Hz Lamp Flux:1446.46x1 lm		
NAME:	TYPE:	WEIGHT:
SPEC.:	DIM.:	SERIAL No.:
MFR.:	SUR.:	Shielding Angle:

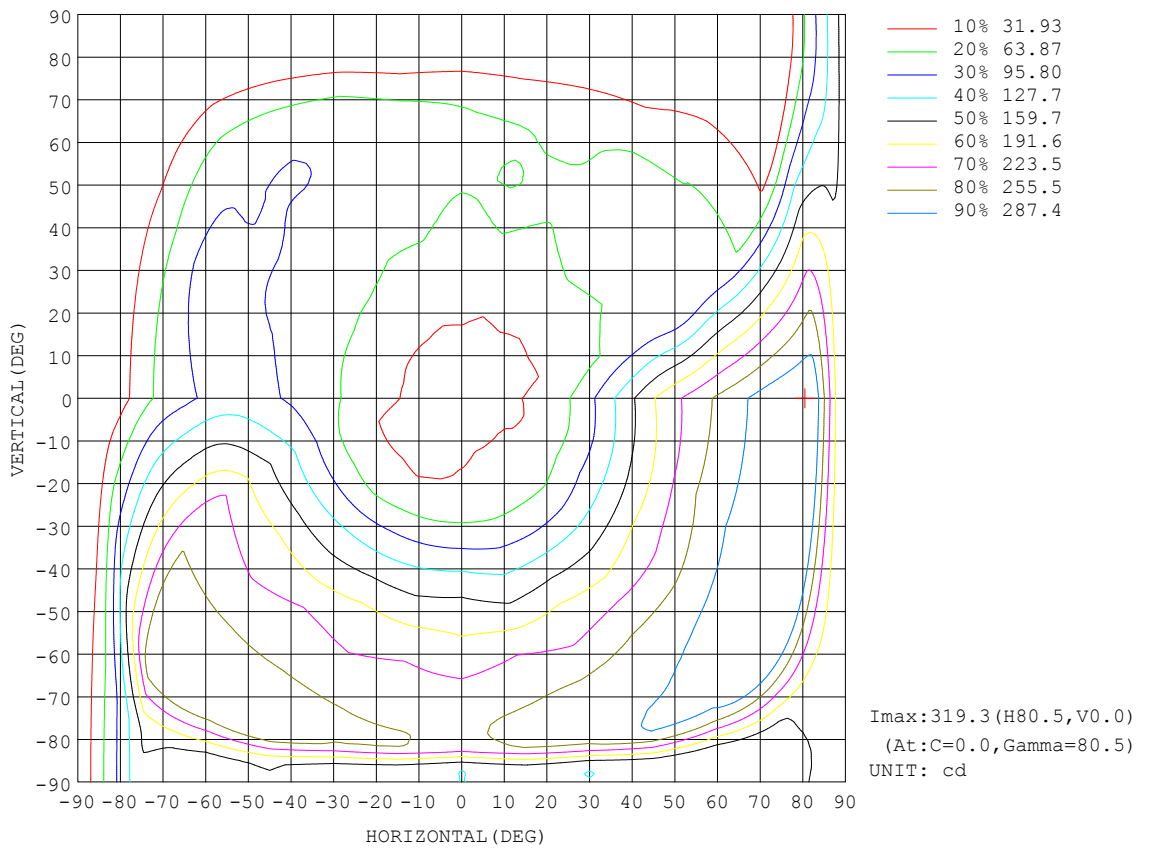
REFLECTANCE										
Ceiling	0.8	0.8	0.8	0.7	0.7	0.7	0.5	0.5	0.5	0
Walls	0.7	0.5	0.3	0.7	0.5	0.3	0.7	0.5	0.3	0
Working plane	0.2	0.2	0.2	0.2	0.2	0.2	0.2	0.2	0.2	0
ROOM INDEX	UTILIZATION FACTORS (PERCENT) k(RI) x RCR = 5									
k = 0.60	34	20	13	32	20	12	28	18	11	4
0.80	42	28	19	40	26	18	35	24	16	7
1.00	50	35	25	46	33	24	40	31	21	10
1.25	57	42	32	53	40	30	45	35	27	13
1.50	62	48	38	58	45	36	49	39	31	16
2.00	71	57	48	65	54	45	56	46	39	21
2.50	76	64	54	70	60	51	60	51	44	24
3.00	80	69	60	74	64	56	63	55	49	27
4.00	86	77	69	79	71	64	67	61	55	32
5.00	90	81	74	83	76	69	70	64	59	34
ROOM INDEX	UF(total)									Direct
According to DIN EN 13032-2 2004			Suspended				SHRNOM = 1.25			

C Range: 0 - 360DEG
 C Interval: 15.0DEG
 Test Speed: HIGH
 Temperature:24.5°C
 Operators:Dingmin Zhang
 Test Date:2025-12-05

γ Range: 0 - 180DEG
 γ Interval: 0.5DEG
 Test System:EVERFINE GO-R5000_V2 SYSTEM V2.00.463
 Humidity:65.0%
 Test Distance:30.000m [K=0.9305]
 Remarks:

ISOCANDELA DIAGRAM

Test:U:120.26V I:0.6911A P:82.768W PF:0.9958 Freq:60.01Hz Lamp Flux:1446.46x1 lm		
NAME:	TYPE:	WEIGHT:
SPEC.:	DIM.:	SERIAL No.:
MFR.:	SUR.:	Shielding Angle:



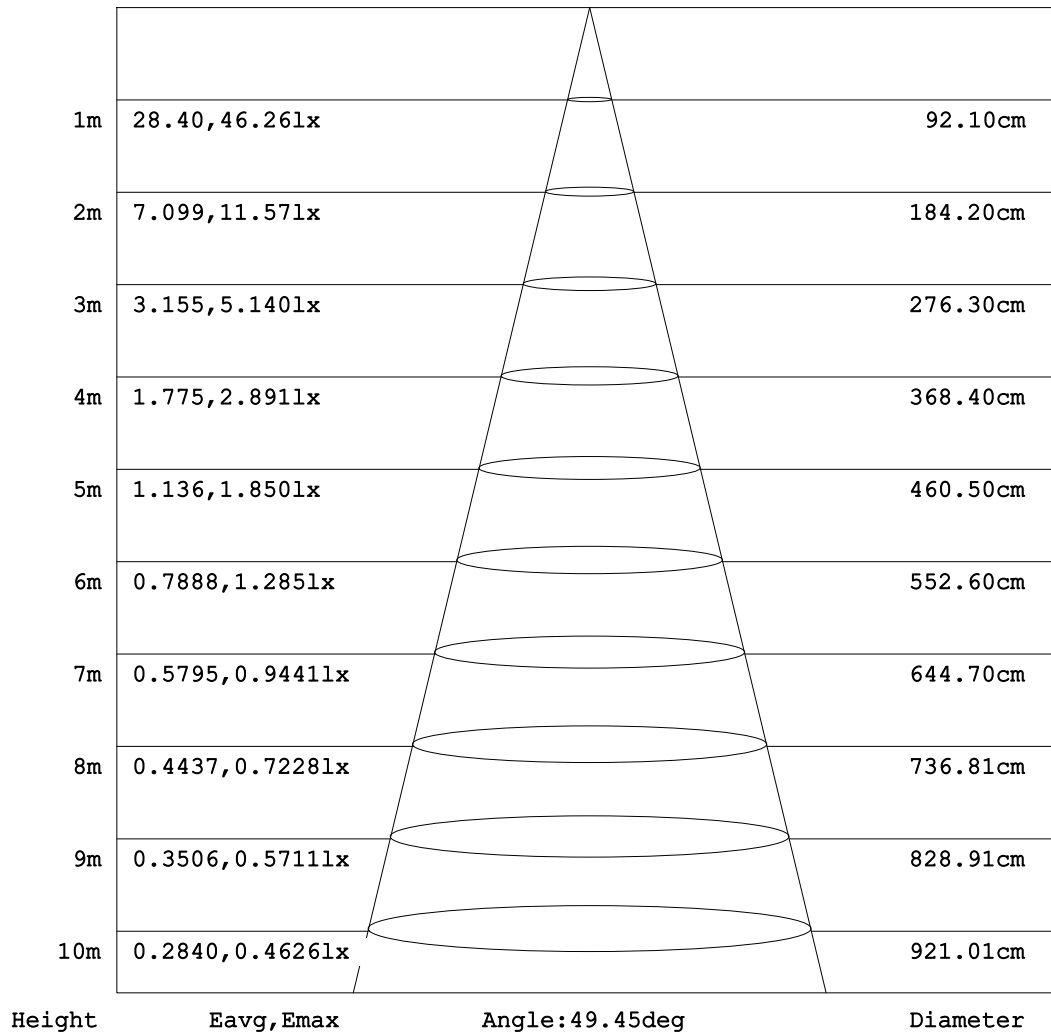
C Range: 0 - 360DEG
C Interval: 15.0DEG
Test Speed: HIGH
Temperature:24.5°C
Operators:Dingmin Zhang
Test Date:2025-12-05

γ Range: 0 - 180DEG
γ Interval: 0.5DEG
Test System:EVERFINE GO-R5000_V2 SYSTEM V2.00.463
Humidity:65.0%
Test Distance:30.000m [K=0.9305]
Remarks:

AAI Figure

Test:U:120.26V I:0.6911A P:82.768W PF:0.9958 Freq:60.01Hz Lamp Flux:1446.46x1 lm		
NAME:	TYPE:	WEIGHT:
SPEC.:	DIM.:	SERIAL No.:
MFR.:	SUR.:	Shielding Angle:

Flux out:19.40 lm



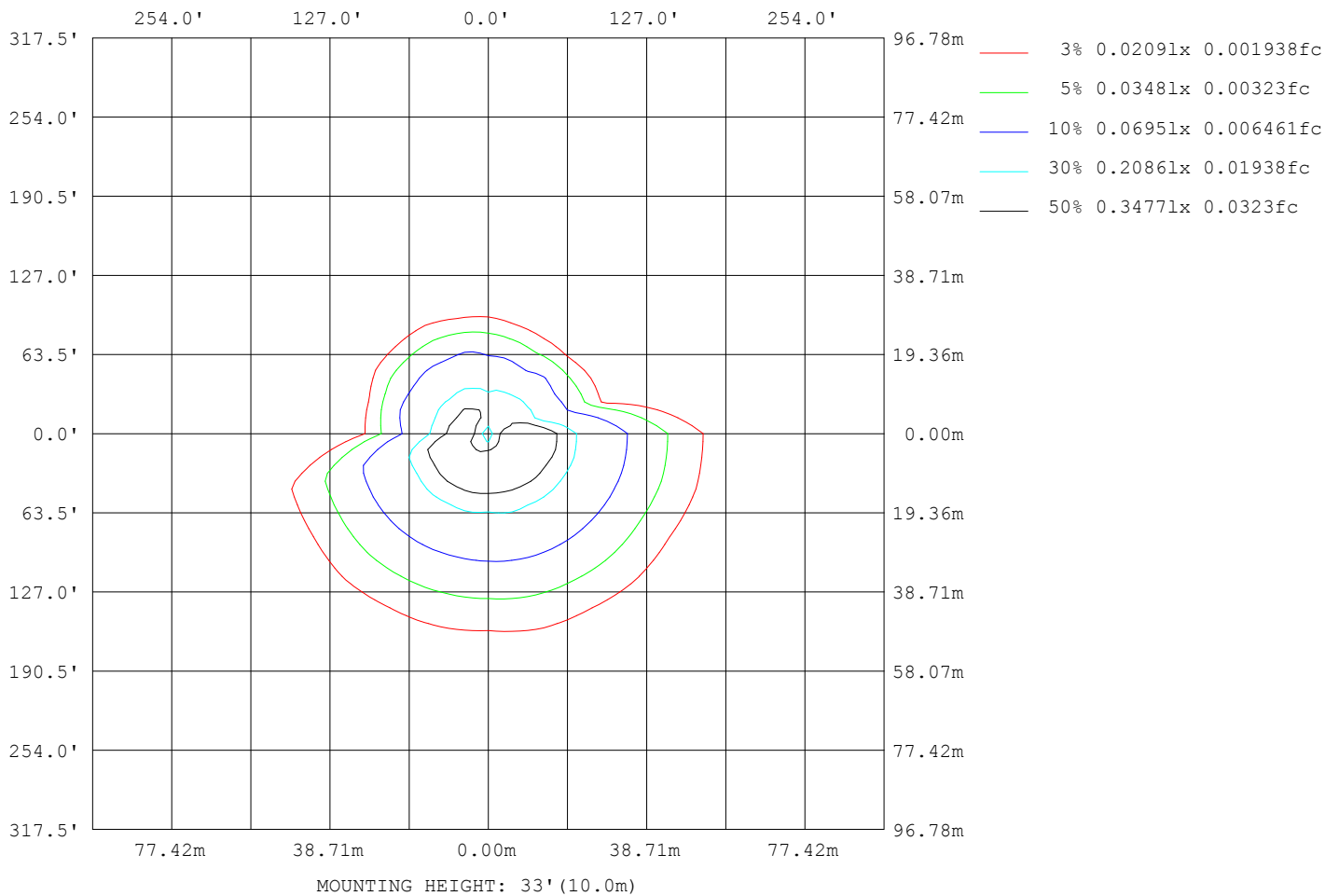
Note: The Curves indicate the illuminated area and the average illumination when the luminaire is at different distance.

C Range: 0 - 360DEG
 C Interval: 15.0DEG
 Test Speed: HIGH
 Temperature: 24.5°C
 Operators: Dingmin Zhang
 Test Date: 2025-12-05

γ Range: 0 - 180DEG
 γ Interval: 0.5DEG
 Test System: EVERFINE GO-R5000_V2 SYSTEM V2.00.463
 Humidity: 65.0%
 Test Distance: 30.000m [K=0.9305]
 Remarks:

ISOLUX DIAGRAM

Test:U:120.26V I:0.6911A P:82.768W PF:0.9958 Freq:60.01Hz Lamp Flux:1446.46x1 lm		
NAME:	TYPE:	WEIGHT:
SPEC.:	DIM.:	SERIAL No.:
MFR.:	SUR.:	Shielding Angle:



C Range: 0 - 360DEG
 C Interval: 15.0DEG
 Test Speed: HIGH
 Temperature:24.5°C
 Operators:Dingmin Zhang
 Test Date:2025-12-05

γ Range: 0 - 180DEG
 γ Interval: 0.5DEG
 Test System:EVERFINE GO-R5000_V2 SYSTEM V2.00.463
 Humidity:65.0%
 Test Distance:30.000m [K=0.9305]
 Remarks:

LED Avg.L Report

Test:U:120.26V I:0.6911A P:82.768W PF:0.9958 Freq:60.01Hz Lamp Flux:1446.46x1 lm		
NAME:	TYPE:	WEIGHT:
SPEC.:	DIM.:	SERIAL No.:
MFR.:	SUR.:	Shielding Angle:

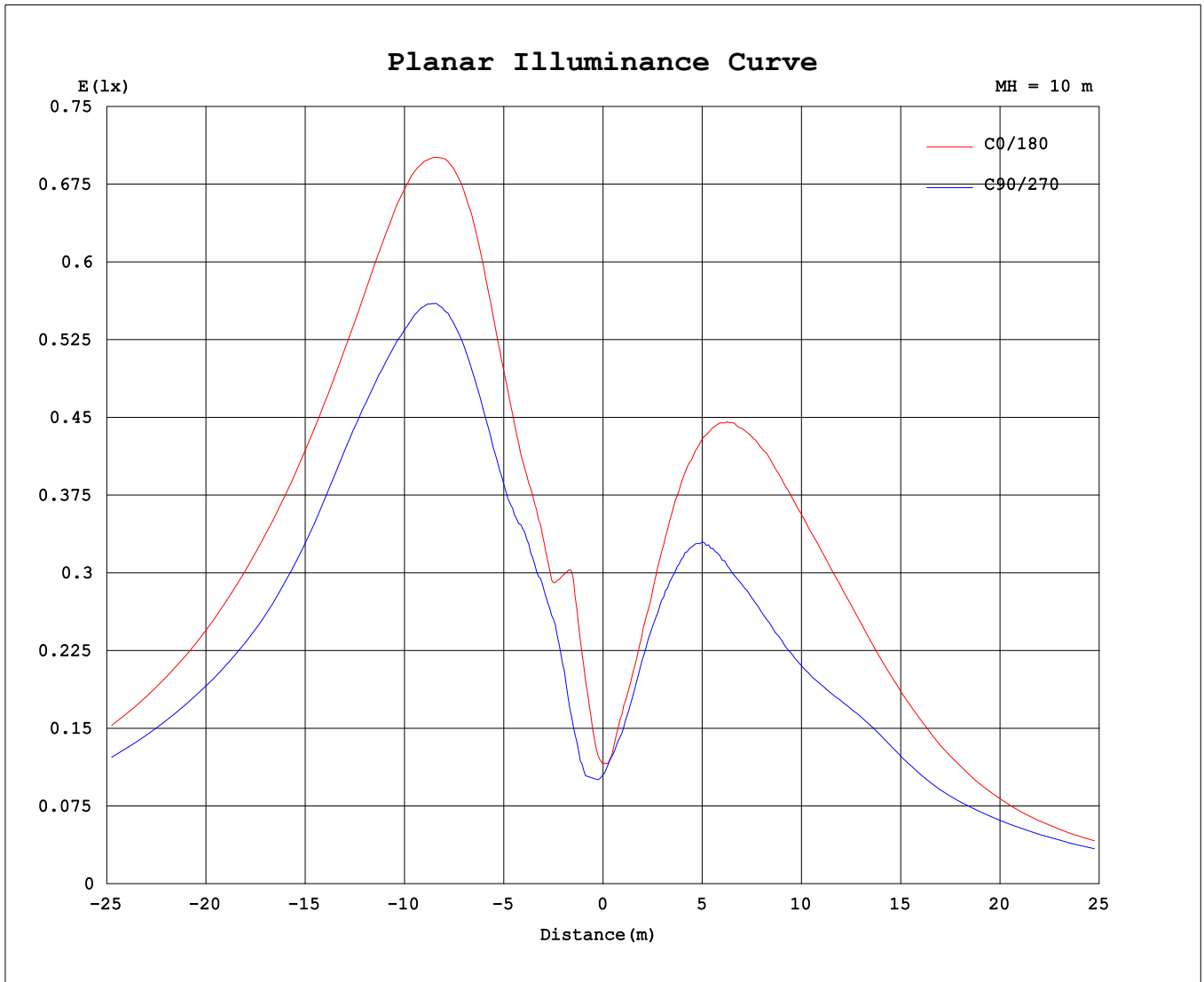
AvgL	cd/m2
L_0~180 (65) av	457
L_0~180 (75) av	735
L_0~180 (85) av	1564
L_90~270 (65) av	359
L_90~270 (75) av	585
L_90~270 (85) av	1020
L_45 (65) av	412
L_45 (75) av	645
L_45 (85) av	1247

Standard: GB/T 29293-2012

C Range: 0 - 360DEG
 C Interval: 15.0DEG
 Test Speed: HIGH
 Temperature:24.5°C
 Operators:Dingmin Zhang
 Test Date:2025-12-05

γ Range: 0 - 180DEG
 γ Interval: 0.5DEG
 Test System:EVERFINE GO-R5000_V2 SYSTEM V2.00.463
 Humidity:65.0%
 Test Distance:30.000m [K=0.9305]
 Remarks:

Planar Illuminance Curve



C Range: 0 - 360DEG
 C Interval: 15.0DEG
 Test Speed: HIGH
 Temperature: 24.5°C
 Operators: Dingmin Zhang
 Test Date: 2025-12-05

γ Range: 0 - 180DEG
 γ Interval: 0.5DEG
 Test System: EVERFINE GO-R5000_V2 SYSTEM V2.00.463
 Humidity: 65.0%
 Test Distance: 30.000m [K=0.9305]
 Remarks:

LUMINOUS DISTRIBUTION INTENSITY DATA

Test:U:120.26V I:0.6911A P:82.768W PF:0.9958 Freq:60.01Hz		
Lamp Flux:1446.46x1 lm		
NAME:	TYPE:	WEIGHT:
SPEC.:	DIM.:	SERIAL No.:
MFR.:	SUR.:	Shielding Angle:

Table--1

UNIT: cd

C (DEG) \ γ (DEG)	0	15	30	45	60	75	90	105	120	135	150	165	180	195	210	225	240	255	270
0	11.6	11.6	11.6	12.0	11.7	10.4	10.5	10.1	9.79	9.13	8.79	8.61	11.6	11.6	11.6	12.0	11.7	10.4	10.5
5	19.8	19.6	17.9	15.7	14.3	11.4	10.5	11.5	11.4	11.2	11.8	11.7	16.2	16.6	15.4	15.6	14.2	14.4	14.4
10	31.6	31.0	29.2	29.4	25.3	23.3	18.9	19.7	17.9	19.6	18.2	21.9	23.4	24.7	22.7	23.3	21.6	20.9	20.9
15	33.5	31.6	33.2	35.2	35.7	35.7	29.5	23.5	22.6	25.3	25.4	25.5	33.1	33.9	32.3	31.3	30.4	28.1	28.6
20	46.0	45.6	43.0	39.7	40.6	36.5	38.5	33.4	30.1	32.7	31.9	31.7	44.5	44.4	44.0	40.7	40.2	36.1	36.3
25	62.1	60.3	59.9	52.4	53.9	49.0	49.2	48.0	44.2	42.6	46.6	44.6	56.1	55.2	55.1	50.4	49.4	44.5	44.1
30	87.9	83.1	83.2	72.7	70.2	67.0	67.7	67.0	67.4	63.5	67.3	65.8	68.3	66.1	64.8	61.0	56.8	52.4	49.1
35	122	114	110	99.5	93.9	90.6	94.4	94.8	96.5	95.1	95.2	93.7	79.9	76.9	72.2	70.5	62.5	60.8	52.6
40	156	148	139	129	123	116	125	124	125	127	125	124	91.4	86.3	77.8	78.4	67.5	66.3	56.0
45	190	179	170	157	153	140	151	149	154	154	156	151	101	94.1	82.8	85.5	73.6	71.8	59.5
50	216	209	201	182	181	164	175	172	182	179	185	177	109	97.9	91.3	86.9	84.2	74.1	67.0
55	239	240	222	210	202	191	190	195	202	206	205	206	110	100	101	88.2	91.2	78.2	72.8
60	261	265	243	239	217	219	200	216	215	230	220	231	102	109	95.7	98.8	84.6	87.7	69.5
65	279	284	269	257	239	238	220	229	230	243	239	244	87.0	105	93.7	94.4	83.9	82.9	67.8
70	298	300	287	272	259	249	239	238	245	254	257	255	72.8	78.6	86.9	80.8	76.7	65.3	59.5
75	312	312	295	282	269	260	248	247	256	266	268	267	49.4	46.9	60.8	57.5	52.8	39.6	40.0
80	319	318	291	290	267	268	243	258	259	279	269	278	19.3	17.3	25.7	23.9	20.5	14.8	16.1
85	257	202	180	199	180	190	167	187	189	210	198	210	2.14	2.36	4.13	3.66	2.67	1.58	1.67
90	179	145	131	139	128	137	127	145	146	158	150	157	0.00	0.00	0.00	0.00	0.00	0.00	0.00
95	277	242	214	223	205	208	200	217	219	225	215	221	3.40	3.56	4.11	4.37	3.00	2.93	2.76
100	304	312	277	269	253	251	235	252	253	264	254	261	16.0	15.6	19.1	17.6	17.8	13.4	14.9
105	291	301	269	272	244	248	224	245	238	260	240	254	36.4	41.4	40.1	44.4	41.7	42.1	33.8
110	276	284	250	259	229	239	214	231	221	243	229	243	56.9	62.0	58.9	66.1	68.7	67.0	63.5
115	258	260	236	240	221	220	202	213	205	221	216	223	67.5	63.6	75.5	72.2	81.4	73.5	84.0
120	239	232	220	210	203	194	188	193	190	198	201	200	74.1	64.9	73.9	68.9	82.8	76.3	88.3
125	217	201	204	183	179	162	172	168	178	173	178	169	73.6	65.9	72.1	66.5	74.9	75.3	85.4
130	189	172	177	155	165	139	156	143	160	150	163	143	68.2	63.0	72.5	65.6	71.7	68.2	79.6
135	155	149	153	127	135	120	134	126	134	126	137	124	59.8	54.6	62.1	59.9	62.9	63.9	71.9
140	117	127	125	111	106	100	107	108	114	110	112	105	48.5	43.7	55.5	53.2	52.6	56.6	67.7
145	88.9	95.9	101	89.6	84.1	81.1	83.4	78.0	92.2	90.8	88.6	85.8	43.1	35.7	46.2	30.5	46.6	45.5	53.8
150	66.4	66.5	64.4	67.0	63.8	53.3	63.0	62.1	66.7	70.0	69.3	60.2	24.7	24.1	24.1	27.4	22.0	20.5	19.8
155	52.0	48.0	54.6	55.5	51.5	48.6	50.6	50.0	54.5	54.1	58.7	54.0	21.4	24.0	17.2	24.5	20.3	23.8	17.2
160	41.2	40.6	44.7	42.6	42.6	40.1	39.8	36.5	44.4	44.7	48.3	44.5	17.2	18.2	16.2	16.3	16.4	16.7	16.2
165	32.6	31.9	34.9	30.8	32.4	28.6	28.3	28.3	34.5	35.3	38.1	35.3	20.3	20.4	18.5	24.0	19.9	24.5	20.0
170	23.3	21.5	22.3	20.4	19.8	19.3	19.9	22.5	25.3	26.6	27.0	23.9	19.2	19.1	20.7	23.1	22.5	24.3	22.9
175	14.3	13.8	13.6	12.2	11.6	11.6	12.5	15.0	16.6	17.4	17.4	15.6	11.1	11.4	11.8	12.9	13.6	15.2	15.3
180	8.55	8.41	8.87	9.22	9.21	8.45	9.20	10.2	10.4	10.1	11.1	9.92	8.37	8.37	8.79	9.04	9.29	9.21	8.96

C Range: 0 - 360DEG

C Interval: 15.0DEG

Test Speed: HIGH

Temperature:24.5°C

Operators:Dingmin Zhang

Test Date:2025-12-05

γ Range: 0 - 180DEG

γ Interval: 0.5DEG

Test System:EVERFINE GO-R5000_V2 SYSTEM V2.00.463

Humidity:65.0%

Test Distance:30.000m [K=0.9305]

Remarks:

LUMINOUS DISTRIBUTION INTENSITY DATA

Test:U:120.26V I:0.6911A P:82.768W PF:0.9958 Freq:60.01Hz		
Lamp Flux:1446.46x1 lm		
NAME:	TYPE:	WEIGHT:
SPEC.:	DIM.:	SERIAL No.:
MFR.:	SUR.:	Shielding Angle:

Table--2

UNIT: cd

C (DEG) \ γ (DEG)	285	300	315	330	345														
0	10.1	9.79	9.13	8.79	8.61														
5	14.3	14.3	13.8	12.5	13.2														
10	19.9	20.4	19.9	18.7	19.4														
15	25.8	28.0	26.3	26.8	26.6														
20	32.3	35.3	32.7	35.2	34.2														
25	38.8	42.9	40.0	43.5	43.2														
30	47.1	48.9	50.2	51.7	54.7														
35	57.1	53.8	61.1	59.2	67.0														
40	64.5	58.7	69.7	65.1	76.7														
45	69.0	63.5	75.3	70.5	83.7														
50	64.5	71.4	70.9	79.0	79.9														
55	61.6	74.3	69.2	82.0	77.2														
60	67.9	59.7	75.5	68.8	84.3														
65	63.6	55.3	66.9	65.3	76.3														
70	51.5	48.7	48.3	59.3	60.4														
75	33.4	31.6	28.4	40.6	40.9														
80	13.2	12.2	10.8	17.2	17.1														
85	1.11	1.10	0.66	2.26	1.97														
90	0.00	0.00	0.00	0.00	0.00														
95	3.58	4.09	5.29	5.10	5.64														
100	14.5	18.0	20.8	25.5	24.3														
105	39.6	40.5	49.3	54.4	64.5														
110	62.4	67.9	79.4	86.3	96.5														
115	67.5	78.4	89.3	107	104														
120	75.6	87.7	88.1	111	105														
125	76.4	94.9	91.1	103	99.5														
130	72.6	88.8	88.1	97.4	86.4														
135	67.7	79.0	79.0	84.3	78.9														
140	53.9	67.3	65.5	68.5	70.0														
145	43.1	58.3	44.0	55.9	50.5														
150	34.7	25.8	34.2	21.4	29.2														
155	26.3	25.2	25.1	26.7	26.6														
160	20.1	20.6	20.3	20.3	23.8														
165	24.9	17.7	23.2	19.0	27.6														
170	26.1	22.6	22.6	23.1	26.3														
175	16.8	13.6	13.2	12.3	13.6														
180	9.54	10.0	10.4	10.5	10.7														

C Range: 0 - 360DEG
 C Interval: 15.0DEG
 Test Speed: HIGH
 Temperature:24.5°C
 Operators:Dingmin Zhang
 Test Date:2025-12-05

γ Range: 0 - 180DEG
 γ Interval: 0.5DEG
 Test System:EVERFINE GO-R5000_V2 SYSTEM V2.00.463
 Humidity:65.0%
 Test Distance:30.000m [K=0.9305]
 Remarks: