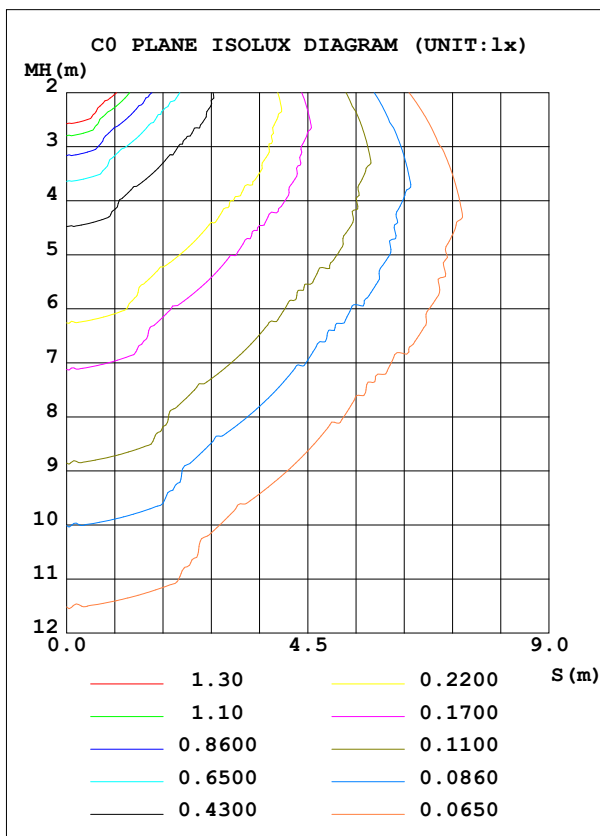
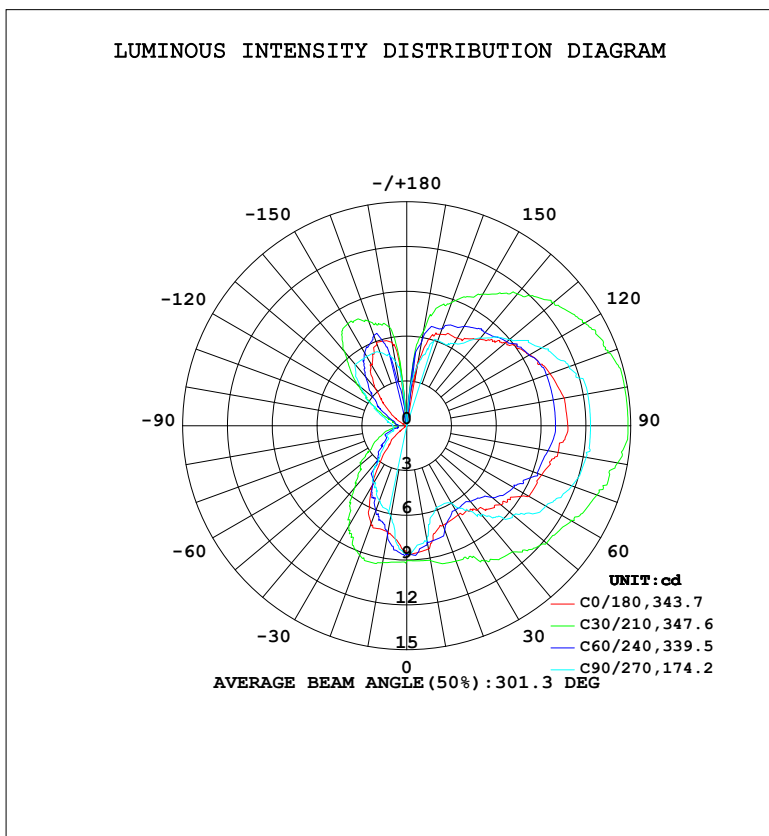


LUMINAIRE PHOTOMETRIC TEST REPORT

Test:U:120.32V I:0.1881A P:22.472W PF:0.9930 Freq:60.01Hz Lamp Flux:72.8185x1 lm		
NAME:	TYPE:	WEIGHT:
SPEC.:	DIM.:	SERIAL No.:
MFR.:	SUR.:	Shielding Angle:

DATA OF LAMP		PHOTOMETRIC DATA			
MODEL	HF7101-BK-SMK	Imax (cd)	14.82	S/MH (C0/180)	0.94
NOMINAL POWER (W)		LOR (%)	100.0	S/MH (C90/270)	0.78
RATED VOLTAGE (V)	120	TOTAL FLUX (lm)	72.818	η UP, DN (C0-180)	40.5, 41.5
NOMINAL FLUX (lm)	72.8185	CIE CLASS	DIFFUSE	η UP, DN (C180-360)	9.8, 8.3
LAMPS INSIDE	1	η up (%)	50.3	CIBSE SHR NOM	1.25
TEST VOLTAGE (V)	120.318	η down (%)	49.7	CIBSE SHR MAX	1.30



C Range: 0 - 360DEG
 C Interval: 15.0DEG
 Test Speed: HIGH
 Temperature: 24.5°C
 Operators: Dingmin Zhang
 Test Date: 2025-12-04

γ Range: 0 - 180DEG
 γ Interval: 0.5DEG
 Test System: EVERFINE GO-R5000_V2 SYSTEM V2.00.463
 Humidity: 65.0%
 Test Distance: 30.000m [K=0.9305]
 Remarks:

ZONAL FLUX DIAGRAM

ZONAL FLUX DIAGRAM:

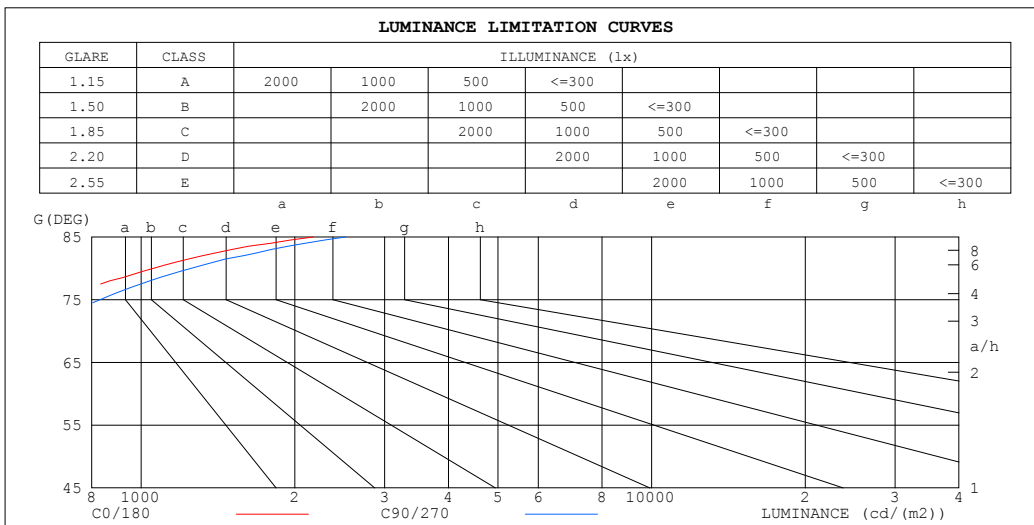
γ	C0	C45	C90	C135	C180	C225	C270	C315	γ	Φ zone	Φ total	%lum, lamp
10	8.382	8.534	7.854	7.538	7.199	8.580	6.117	6.277	0- 10	0.7620	0.7620	1.05,1.05
20	7.103	8.120	5.837	6.044	7.009	7.450	5.332	5.932	10- 20	1.988	2.750	3.78,3.78
30	6.894	8.120	5.948	6.668	4.437	5.275	4.418	4.678	20- 30	2.942	5.692	7.82,7.82
40	7.359	8.120	7.785	8.172	2.252	3.177	3.012	2.125	30- 40	3.620	9.313	12.8,12.8
50	8.220	8.233	9.292	9.641	0.9168	1.925	1.881	0.9527	40- 50	4.211	13.52	18.6,18.6
60	9.456	8.203	10.76	10.82	0.0837	1.523	1.495	0.1681	50- 60	4.885	18.41	25.3,25.3
70	9.618	8.753	11.77	11.19	0	0.7404	0.9966	0.0837	60- 70	5.551	23.96	32.9,32.9
80	10.29	9.439	12.20	10.88	0	0.2511	0.8937	0	70- 80	6.018	29.98	41.2,41.2
90	10.79	9.718	12.31	10.23	0	0.2511	0.9307	0	80- 90	6.228	36.21	49.7,49.7
100	10.71	9.994	12.31	9.940	0	0.2346	1.158	0	90-100	6.231	42.44	58.3,58.3
110	10.21	10.10	11.63	9.392	0	0.5743	1.590	0.3354	100-110	6.008	48.44	66.5,66.5
120	9.506	10.30	10.46	8.506	0.5158	1.457	2.511	1.358	110-120	5.688	54.13	74.3,74.3
130	8.706	10.20	8.962	7.877	1.550	2.762	4.013	2.483	120-130	5.302	59.43	81.6,81.6
140	7.567	9.598	7.701	6.912	3.268	4.443	5.357	3.851	130-140	4.724	64.16	88.1,88.1
150	6.779	8.819	6.360	5.942	4.767	6.529	5.357	4.477	140-150	3.933	68.09	93.5,93.5
160	6.520	8.287	6.080	5.274	5.940	7.969	5.229	4.409	150-160	2.868	70.96	97.4,97.4
170	4.353	6.205	4.100	3.185	5.686	5.945	4.357	3.595	160-170	1.594	72.55	99.6,99.6
180	0	0	0	0	0	0	0	0	170-180	0.2656	72.82	100,100
DEG	LUMINOUS INTENSITY:cd									UNIT:lm		

C Range: 0 - 360DEG
 C Interval: 15.0DEG
 Test Speed: HIGH
 Temperature:24.5°C
 Operators:Dingmin Zhang
 Test Date:2025-12-04

γ Range: 0 - 180DEG
 γ Interval: 0.5DEG
 Test System:EVERFINE GO-R5000_V2 SYSTEM V2.00.463
 Humidity:65.0%
 Test Distance:30.000m [K=0.9305]
 Remarks:

LUMINANCE LIMITATION CURVES

Test:U:120.32V I:0.1881A P:22.472W PF:0.9930 Freq:60.01Hz Lamp Flux:72.8185x1 lm		
NAME:	TYPE:	WEIGHT:
SPEC.:	DIM.:	SERIAL No.:
MFR.:	SUR.:	Shielding Angle:



LUMINANCE cd/(m2)		
G (DEG)	C0/180	C90/270
85	2174	2517
80	1057	1253
75	686	831
70	501	614
65	402	480
60	337	384
55	263	320
50	228	258
45	198	217

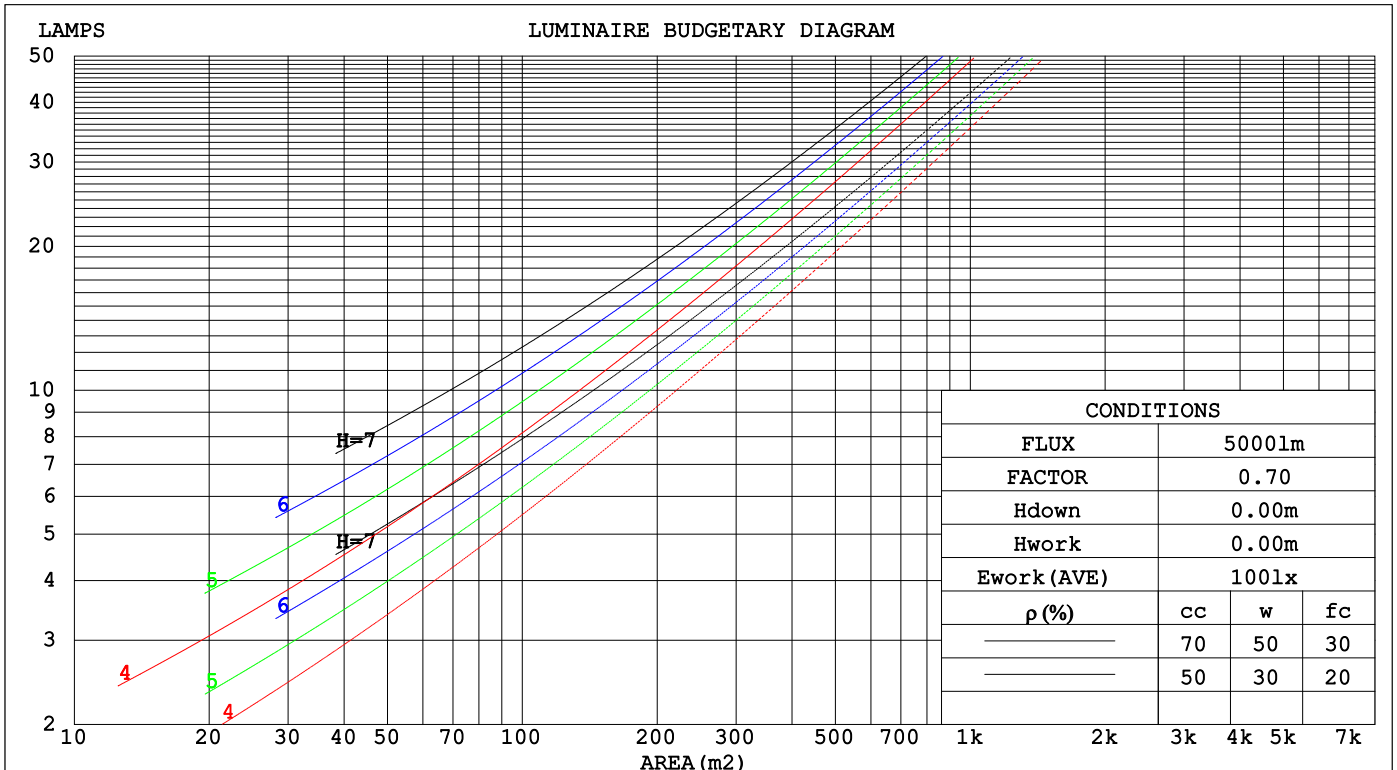
C Range: 0 - 360DEG
 C Interval: 15.0DEG
 Test Speed: HIGH
 Temperature: 24.5°C
 Operators: Dingmin Zhang
 Test Date: 2025-12-04

γ Range: 0 - 180DEG
 γ Interval: 0.5DEG
 Test System: EVERFINE GO-R5000_V2 SYSTEM V2.00.463
 Humidity: 65.0%
 Test Distance: 30.000m [K=0.9305]
 Remarks:

CU AND LUMINAIRE BUDGETARY ESTIMATE DIAGRAM

Test:U:120.32V I:0.1881A P:22.472W PF:0.9930 Freq:60.01Hz		
Lamp Flux:72.8185x1 lm		
NAME:	TYPE:	WEIGHT:
SPEC.:	DIM.:	SERIAL No.:
MFR.:	SUR.:	Shielding Angle:

pcc	80%			70%			50%			30%			10%			0
pw	50%	30%	10%	50%	30%	10%	50%	30%	10%	50%	30%	10%	50%	30%	10%	0
pfc	20%			20%			20%			20%			20%			0
RCR	RCR:Room Cavity Ratio						Coefficients of Utilization(CU)									
0.0	1.07	1.07	1.07	.99	.99	.99	.83	.83	.83	.69	.69	.69	.56	.56	.56	.50
1.0	.88	.82	.77	.80	.76	.71	.67	.63	.60	.54	.52	.49	.43	.41	.39	.33
2.0	.74	.67	.60	.68	.61	.56	.57	.51	.47	.46	.42	.38	.36	.33	.30	.25
3.0	.64	.56	.49	.59	.51	.45	.49	.43	.38	.39	.35	.31	.31	.27	.24	.20
4.0	.56	.47	.40	.52	.43	.37	.43	.36	.31	.35	.30	.26	.27	.23	.20	.16
5.0	.50	.41	.34	.46	.38	.31	.38	.31	.27	.31	.26	.22	.24	.20	.17	.14
6.0	.44	.35	.29	.41	.33	.27	.34	.28	.23	.28	.23	.19	.22	.18	.15	.12
7.0	.40	.31	.25	.37	.29	.23	.31	.24	.20	.25	.20	.16	.20	.16	.13	.10
8.0	.36	.28	.22	.33	.26	.20	.28	.22	.17	.23	.18	.14	.18	.14	.11	.09
9.0	.33	.25	.19	.30	.23	.18	.25	.20	.15	.21	.16	.13	.17	.13	.10	.08
10.0	.30	.22	.17	.28	.21	.16	.23	.18	.14	.19	.15	.11	.15	.12	.09	.07



C Range: 0 - 360DEG
 C Interval: 15.0DEG
 Test Speed: HIGH
 Temperature:24.5°C
 Operators:Dingmin Zhang
 Test Date:2025-12-04

γ Range: 0 - 180DEG
 γ Interval: 0.5DEG
 Test System:EVERFINE GO-R5000_V2 SYSTEM V2.00.463
 Humidity:65.0%
 Test Distance:30.000m [K=0.9305]
 Remarks:

WEC AND CCEC

Test:U:120.32V I:0.1881A P:22.472W PF:0.9930 Freq:60.01Hz									
Lamp Flux:72.8185x1 lm									
NAME:			TYPE:			WEIGHT:			
SPEC.:			DIM.:			SERIAL No.:			
MFR.:			SUR.:			Shielding Angle:			

ρ _{cc}	80%			70%			50%			30%			10%			0
ρ _w	50%	30%	10%	50%	30%	10%	50%	30%	10%	50%	30%	10%	50%	30%	10%	0
ρ _{fc}	20%			20%			20%			20%			20%			0
RCR	RCR:Room Cavity Ratio						Wall Exitance Coefficients(WEC)									
0.0																
1.0	.391	.222	.070	.368	.210	.067	.326	.187	.060	.287	.166	.053	.252	.146	.047	
2.0	.329	.180	.055	.308	.170	.052	.270	.150	.047	.234	.131	.041	.201	.114	.036	
3.0	.288	.153	.046	.269	.144	.043	.234	.127	.039	.202	.110	.034	.171	.095	.029	
4.0	.257	.134	.039	.240	.126	.037	.208	.110	.033	.178	.096	.029	.150	.082	.025	
5.0	.233	.119	.034	.217	.111	.032	.187	.098	.029	.160	.084	.025	.134	.072	.022	
6.0	.213	.107	.031	.198	.100	.029	.171	.088	.025	.145	.075	.022	.121	.064	.019	
7.0	.196	.097	.027	.182	.091	.026	.157	.079	.023	.133	.068	.020	.111	.058	.017	
8.0	.181	.089	.025	.169	.083	.024	.145	.073	.021	.123	.062	.018	.102	.053	.015	
9.0	.169	.082	.023	.157	.077	.022	.135	.067	.019	.115	.057	.016	.095	.048	.014	
10.0	.158	.076	.021	.147	.071	.020	.126	.062	.017	.107	.053	.015	.089	.045	.013	

ρ _{cc}	80%			70%			50%			30%			10%			0
ρ _w	50%	30%	10%	50%	30%	10%	50%	30%	10%	50%	30%	10%	50%	30%	10%	0
ρ _{fc}	20%			20%			20%			20%			20%			0
RCR	RCR:Room Cavity Ratio						Ceiling Cavity Exitance Coefficients(CCEC)									
0.0	.574	.574	.574	.490	.490	.490	.335	.335	.335	.192	.192	.192	.061	.061	.061	
1.0	.572	.542	.514	.490	.465	.443	.335	.320	.306	.193	.185	.178	.062	.060	.058	
2.0	.566	.521	.482	.485	.448	.417	.332	.310	.291	.192	.180	.171	.061	.058	.056	
3.0	.559	.505	.463	.479	.436	.401	.329	.303	.281	.190	.177	.166	.061	.057	.054	
4.0	.551	.494	.450	.473	.427	.391	.325	.297	.275	.188	.174	.163	.061	.057	.054	
5.0	.544	.485	.441	.467	.419	.384	.322	.293	.271	.186	.172	.161	.060	.056	.053	
6.0	.537	.477	.434	.462	.413	.378	.319	.289	.268	.185	.170	.159	.060	.056	.053	
7.0	.530	.471	.430	.456	.408	.375	.315	.286	.265	.183	.169	.158	.059	.055	.052	
8.0	.524	.466	.426	.451	.404	.372	.312	.284	.264	.182	.167	.157	.059	.055	.052	
9.0	.518	.462	.423	.446	.401	.369	.309	.282	.262	.180	.166	.156	.058	.055	.052	
10.0	.513	.458	.421	.442	.398	.368	.307	.280	.261	.179	.165	.156	.058	.054	.052	

C Range: 0 - 360DEG
 C Interval: 15.0DEG
 Test Speed: HIGH
 Temperature:24.5°C
 Operators:Dingmin Zhang
 Test Date:2025-12-04

γ Range: 0 - 180DEG
 γ Interval: 0.5DEG
 Test System:EVERFINE GO-R5000_V2 SYSTEM V2.00.463
 Humidity:65.0%
 Test Distance:30.000m [K=0.9305]
 Remarks:

UGR(Unified Glare Rating) Table

Test:U:120.32V I:0.1881A P:22.472W PF:0.9930 Freq:60.01Hz										
Lamp Flux:72.8185x1 lm										
NAME:			TYPE:			WEIGHT:				
SPEC.:			DIM.:			SERIAL No.:				
MFR.:			SUR.:			Shielding Angle:				
ceiling/cavity	0.7	0.7	0.5	0.5	0.3	0.7	0.7	0.5	0.5	0.3
walls	0.5	0.3	0.5	0.3	0.3	0.5	0.3	0.5	0.3	0.3
working plane	0.2	0.2	0.2	0.2	0.2	0.2	0.2	0.2	0.2	0.2
Room dimensions	Viewed crosswise					Viewed endwise				
x = 2H y = 2H	7.6	8.7	8.5	9.6	10.7	7.0	8.1	7.9	9.0	10.1
3H	10.8	11.8	11.7	12.7	13.9	10.9	11.8	11.8	12.7	13.9
4H	12.6	13.5	13.5	14.4	15.6	13.0	13.9	13.9	14.8	16.0
6H	14.7	15.5	15.6	16.4	17.7	15.3	16.1	16.2	17.0	18.3
8H	15.8	16.6	16.7	17.6	18.8	16.5	17.3	17.4	18.3	19.5
12H	17.1	17.9	18.1	18.9	20.1	17.9	18.7	18.9	19.7	20.9
4H 2H	8.5	9.4	9.4	10.3	11.5	7.9	8.8	8.8	9.8	11.0
3H	12.3	13.1	13.2	14.0	15.2	11.7	12.5	12.7	13.5	14.7
4H	14.3	15.0	15.3	16.0	17.2	13.9	14.7	14.9	15.6	16.9
6H	16.4	17.1	17.4	18.0	19.3	16.4	17.0	17.4	18.0	19.3
8H	17.6	18.2	18.5	19.2	20.5	17.8	18.4	18.8	19.4	20.7
12H	18.9	19.5	19.9	20.5	21.8	19.3	19.9	20.3	20.9	22.2
8H 4H	15.0	15.6	15.9	16.6	17.9	14.6	15.2	15.6	16.2	17.5
6H	17.6	18.2	18.6	19.2	20.5	17.2	17.7	18.2	18.7	20.0
8H	19.1	19.5	20.1	20.6	21.9	18.7	19.2	19.7	20.2	21.5
12H	20.6	21.0	21.6	22.0	23.4	20.5	20.9	21.5	21.9	23.3
12H 4H	15.1	15.7	16.1	16.7	18.0	14.9	15.5	15.9	16.5	17.8
6H	17.9	18.3	18.9	19.4	20.7	17.5	18.0	18.5	19.0	20.3
8H	19.5	19.9	20.5	20.9	22.3	19.1	19.5	20.1	20.5	21.9
Variations with the observer position at spacings(CIE Pub.117):										
S = 1.0H	+ 0.1 / - 0.1					+ 0.1 / - 0.1				
1.5H	+ 0.3 / - 0.3					+ 0.2 / - 0.2				
2.0H	+ 0.4 / - 0.4					+ 0.3 / - 0.3				

CIE Pub.117, 72.82 lm Total Lamp Luminous Flux Corrected (8log(F/F0) = -9.1)
 Area: 0.0561 m2

C Range: 0 - 360DEG
 C Interval: 15.0DEG
 Test Speed: HIGH
 Temperature:24.5°C
 Operators:Dingmin Zhang
 Test Date:2025-12-04

γ Range: 0 - 180DEG
 γ Interval: 0.5DEG
 Test System:EVERFINE GO-R5000_V2 SYSTEM V2.00.463
 Humidity:65.0%
 Test Distance:30.000m [K=0.9305]
 Remarks:

UTILIZATION FACTORS TABLE

Test:U:120.32V I:0.1881A P:22.472W PF:0.9930 Freq:60.01Hz Lamp Flux:72.8185x1 lm		
NAME:	TYPE:	WEIGHT:
SPEC.:	DIM.:	SERIAL No.:
MFR.:	SUR.:	Shielding Angle:

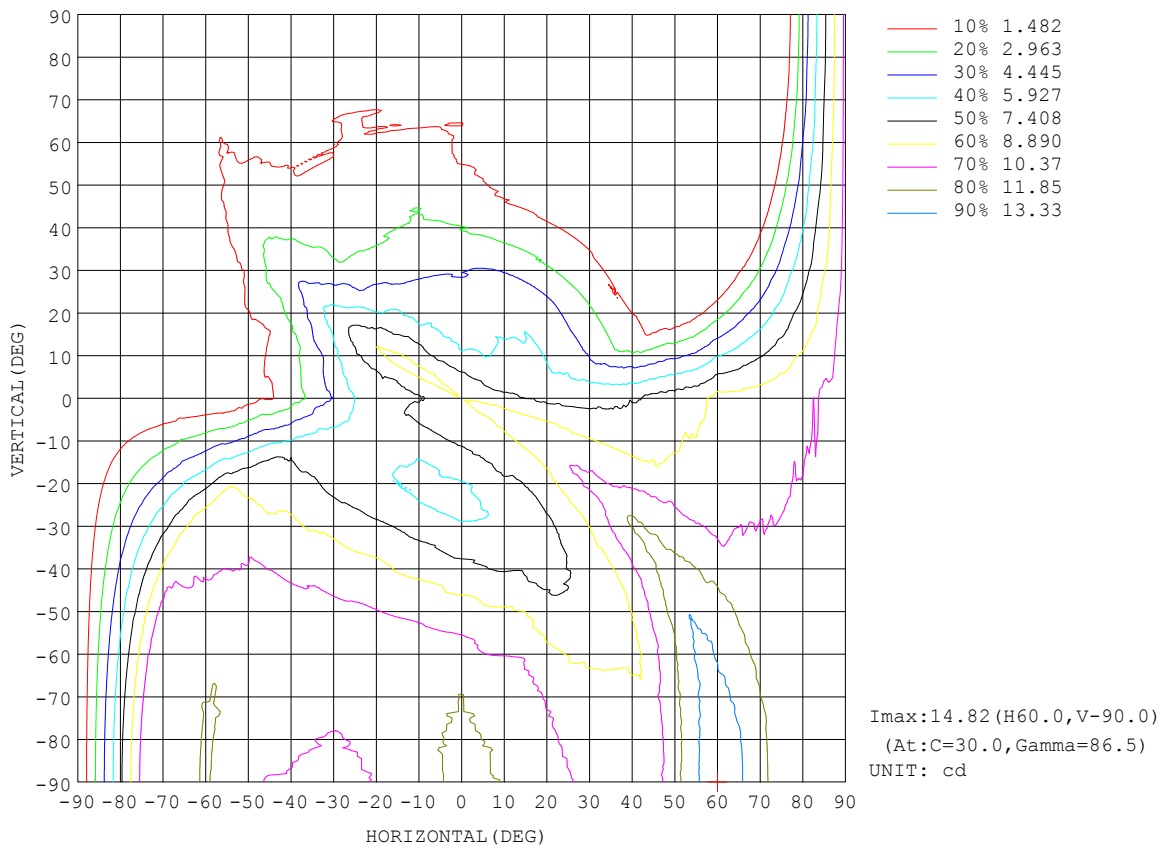
REFLECTANCE										
Ceiling	0.8	0.8	0.8	0.7	0.7	0.7	0.5	0.5	0.5	0
Walls	0.7	0.5	0.3	0.7	0.5	0.3	0.7	0.5	0.3	0
Working plane	0.2	0.2	0.2	0.2	0.2	0.2	0.2	0.2	0.2	0
ROOM INDEX	UTILIZATION FACTORS (PERCENT) k(RI) x RCR = 5									
k = 0.60	38	26	19	36	25	18	32	22	17	9
0.80	46	33	25	44	31	24	38	28	22	12
1.00	53	40	31	50	38	30	43	35	27	15
1.25	60	47	38	56	44	36	48	39	32	18
1.50	65	52	43	61	49	40	52	43	36	20
2.00	73	61	51	67	57	48	57	49	42	24
2.50	78	66	58	72	62	54	61	53	47	27
3.00	82	71	63	75	66	59	64	57	51	29
4.00	87	78	70	80	72	65	67	61	56	32
5.00	90	82	75	83	76	70	70	65	60	34
ROOM INDEX	UF(total)									Direct
According to DIN EN 13032-2 2004			Suspended				SHRNOM = 1.25			

C Range: 0 - 360DEG
 C Interval: 15.0DEG
 Test Speed: HIGH
 Temperature:24.5°C
 Operators:Dingmin Zhang
 Test Date:2025-12-04

γ Range: 0 - 180DEG
 γ Interval: 0.5DEG
 Test System:EVERFINE GO-R5000_V2 SYSTEM V2.00.463
 Humidity:65.0%
 Test Distance:30.000m [K=0.9305]
 Remarks:

ISOCANDELA DIAGRAM

Test:U:120.32V I:0.1881A P:22.472W PF:0.9930 Freq:60.01Hz Lamp Flux:72.8185x1 lm		
NAME:	TYPE:	WEIGHT:
SPEC.:	DIM.:	SERIAL No.:
MFR.:	SUR.:	Shielding Angle:



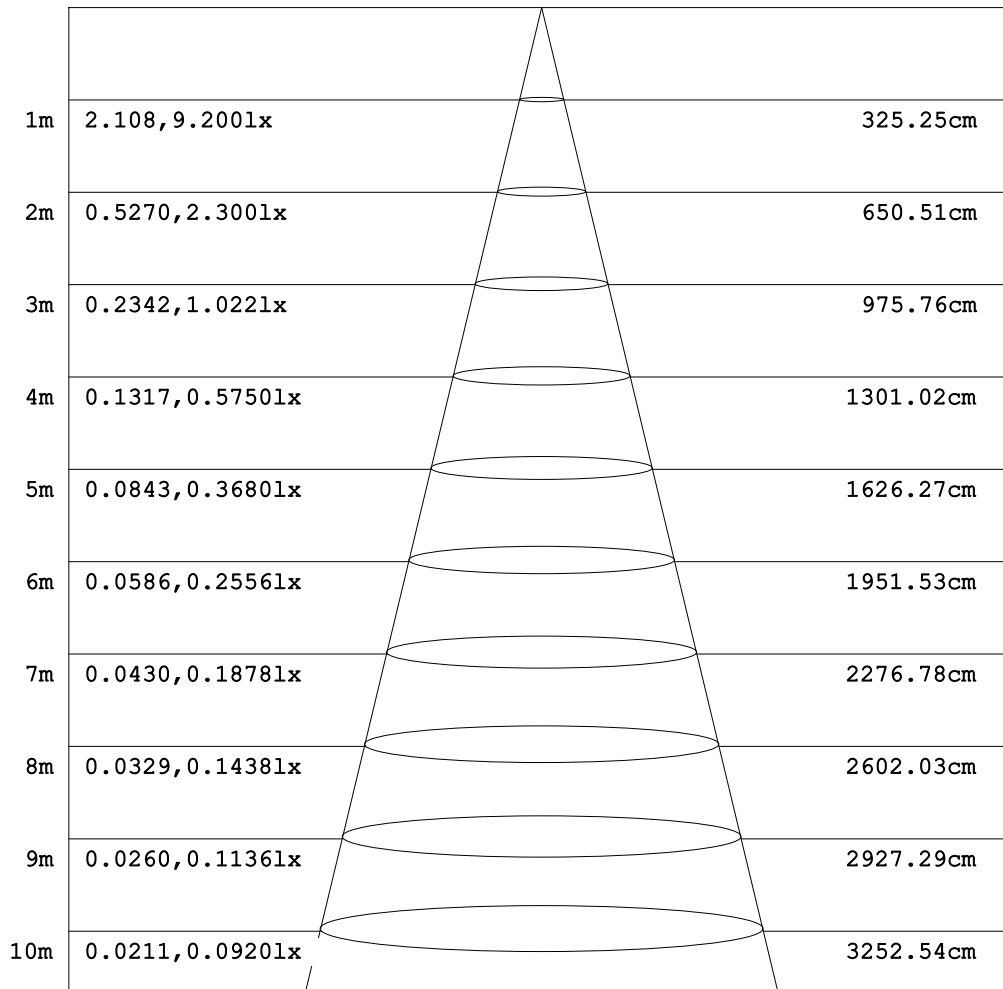
C Range: 0 - 360DEG
C Interval: 15.0DEG
Test Speed: HIGH
Temperature:24.5°C
Operators:Dingmin Zhang
Test Date:2025-12-04

γ Range: 0 - 180DEG
γ Interval: 0.5DEG
Test System:EVERFINE GO-R5000_V2 SYSTEM V2.00.463
Humidity:65.0%
Test Distance:30.000m [K=0.9305]
Remarks:

AAI Figure

Test:U:120.32V I:0.1881A P:22.472W PF:0.9930 Freq:60.01Hz Lamp Flux:72.8185x1 lm		
NAME:	TYPE:	WEIGHT:
SPEC.:	DIM.:	SERIAL No.:
MFR.:	SUR.:	Shielding Angle:

Flux out:17.63 lm



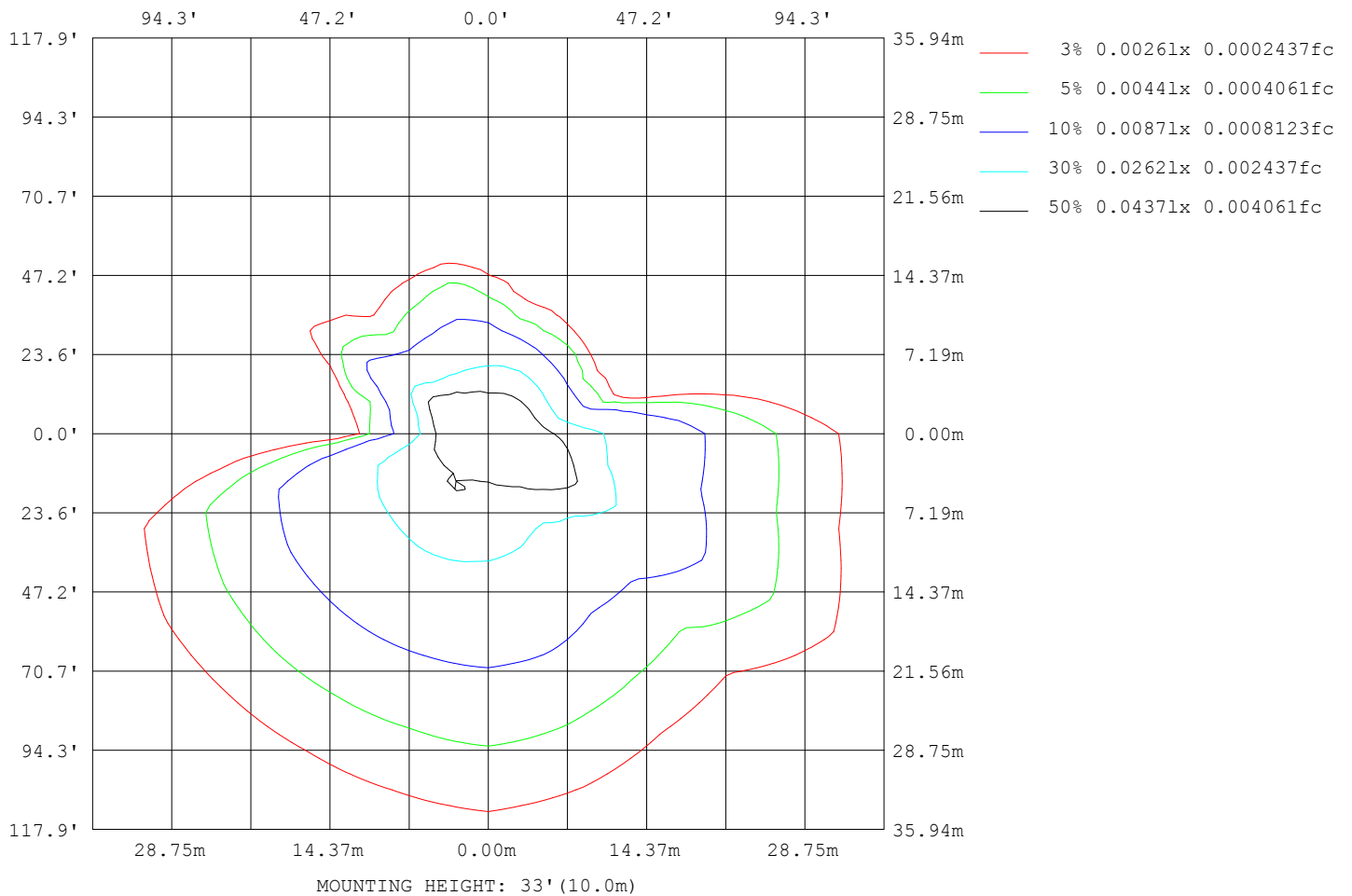
Note: The Curves indicate the illuminated area and the average illumination when the luminaire is at different distance.

C Range: 0 - 360DEG
 C Interval: 15.0DEG
 Test Speed: HIGH
 Temperature: 24.5°C
 Operators: Dingmin Zhang
 Test Date: 2025-12-04

γ Range: 0 - 180DEG
 γ Interval: 0.5DEG
 Test System: EVERFINE GO-R5000_V2 SYSTEM V2.00.463
 Humidity: 65.0%
 Test Distance: 30.000m [K=0.9305]
 Remarks:

ISOLUX DIAGRAM

Test:U:120.32V I:0.1881A P:22.472W PF:0.9930 Freq:60.01Hz Lamp Flux:72.8185x1 lm		
NAME:	TYPE:	WEIGHT:
SPEC.:	DIM.:	SERIAL No.:
MFR.:	SUR.:	Shielding Angle:



C Range: 0 - 360DEG
 C Interval: 15.0DEG
 Test Speed: HIGH
 Temperature:24.5°C
 Operators:Dingmin Zhang
 Test Date:2025-12-04

γ Range: 0 - 180DEG
 γ Interval: 0.5DEG
 Test System:EVERFINE GO-R5000_V2 SYSTEM V2.00.463
 Humidity:65.0%
 Test Distance:30.000m [K=0.9305]
 Remarks:

LED Avg.L Report

Test:U:120.32V I:0.1881A P:22.472W PF:0.9930 Freq:60.01Hz Lamp Flux:72.8185x1 lm		
NAME:	TYPE:	WEIGHT:
SPEC.:	DIM.:	SERIAL No.:
MFR.:	SUR.:	Shielding Angle:

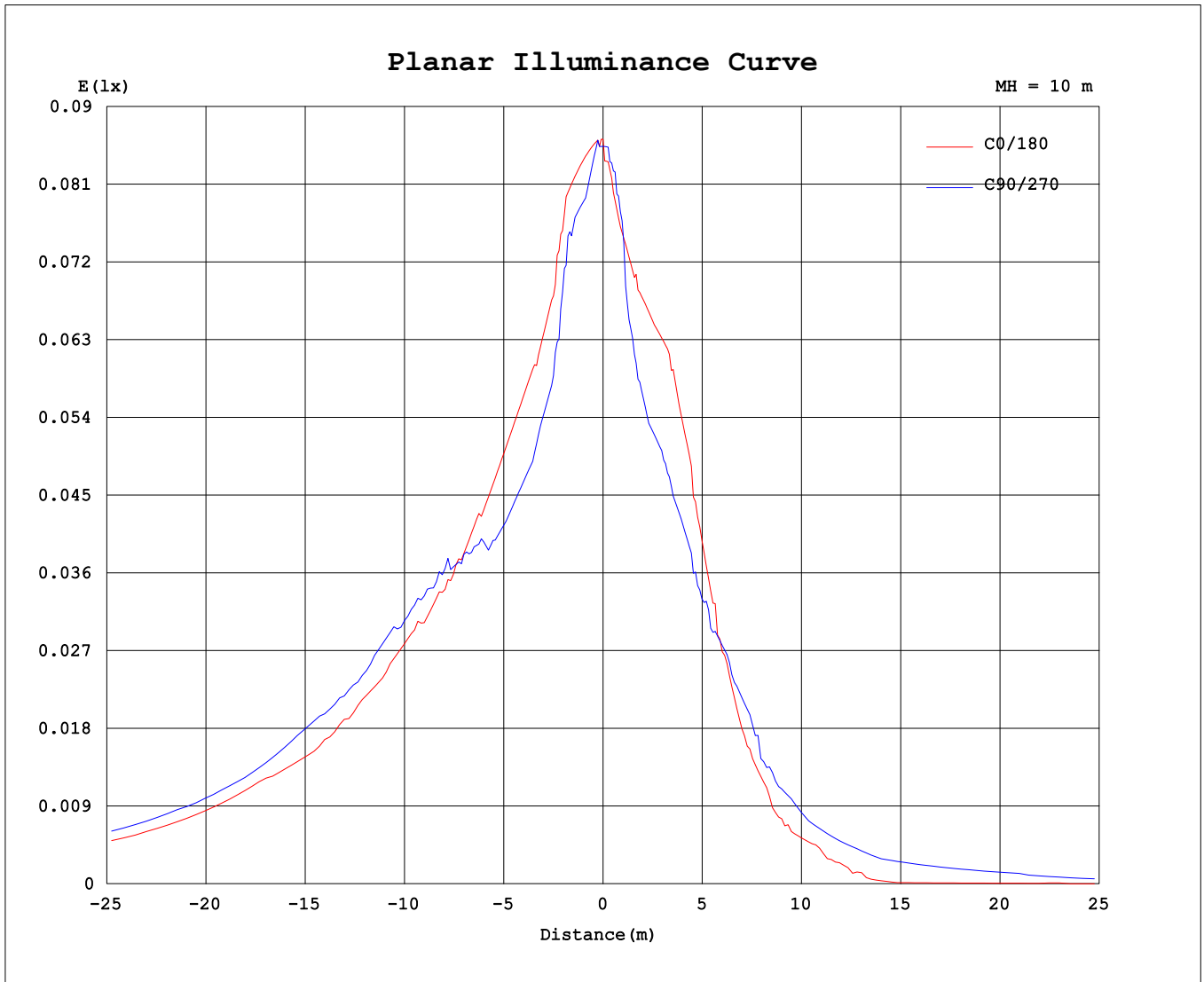
AvgL	cd/m2
L_0~180 (65) av	203
L_0~180 (75) av	343
L_0~180 (85) av	1087
L_90~270 (65) av	269
L_90~270 (75) av	448
L_90~270 (85) av	1346
L_45 (65) av	219
L_45 (75) av	357
L_45 (85) av	1045

Standard: GB/T 29293-2012

C Range: 0 - 360DEG
C Interval: 15.0DEG
Test Speed: HIGH
Temperature:24.5°C
Operators:Dingmin Zhang
Test Date:2025-12-04

γ Range: 0 - 180DEG
γ Interval: 0.5DEG
Test System:EVERFINE GO-R5000_V2 SYSTEM V2.00.463
Humidity:65.0%
Test Distance:30.000m [K=0.9305]
Remarks:

Planar Illuminance Curve



C Range: 0 - 360DEG
C Interval: 15.0DEG
Test Speed: HIGH
Temperature: 24.5°C
Operators: Dingmin Zhang
Test Date: 2025-12-04

γ Range: 0 - 180DEG
γ Interval: 0.5DEG
Test System: EVERFINE GO-R5000_V2 SYSTEM V2.00.463
Humidity: 65.0%
Test Distance: 30.000m [K=0.9305]
Remarks:

LUMINOUS DISTRIBUTION INTENSITY DATA

Test:U:120.32V I:0.1881A P:22.472W PF:0.9930 Freq:60.01Hz Lamp Flux:72.8185x1 lm		
NAME:	TYPE:	WEIGHT:
SPEC.:	DIM.:	SERIAL No.:
MFR.:	SUR.:	Shielding Angle:

Table--1

UNIT: cd

C (DEG) \ γ (DEG)	0	15	30	45	60	75	90	105	120	135	150	165	180	195	210	225	240	255	270
0	8.62	8.54	9.04	8.79	8.62	8.54	8.54	8.45	8.54	8.62	8.71	8.62	8.62	8.54	9.04	8.79	8.62	8.54	8.54
5	8.52	8.96	9.08	8.77	8.53	8.29	8.03	7.96	8.08	8.10	7.95	8.03	7.70	8.20	9.17	8.74	8.37	8.12	7.87
10	8.38	8.96	9.17	8.53	7.87	7.92	7.85	7.47	7.45	7.54	7.61	7.76	7.20	7.95	9.31	8.58	7.46	6.61	6.12
15	7.40	8.96	9.55	8.21	7.86	7.14	6.32	6.11	6.18	6.36	6.61	7.36	7.14	7.40	9.46	8.09	6.61	5.86	5.72
20	7.10	8.96	9.65	8.12	7.45	6.36	5.84	5.73	5.86	6.04	6.19	6.40	7.01	7.20	9.22	7.45	6.08	5.61	5.33
25	6.99	8.88	9.79	8.12	6.81	6.05	5.79	5.86	5.94	6.10	6.08	6.21	5.94	6.74	8.62	6.77	5.28	5.14	4.85
30	6.89	8.79	10.5	8.12	6.51	6.07	5.95	6.55	6.86	6.67	6.61	6.36	4.44	5.85	7.79	5.27	4.55	4.52	4.42
35	6.97	8.79	10.9	8.12	6.47	6.51	6.95	7.61	7.70	7.44	6.95	6.81	3.26	4.18	6.62	4.18	4.08	4.10	3.92
40	7.36	8.79	11.0	8.12	6.62	7.19	7.78	8.28	8.38	8.17	7.78	7.12	2.25	2.84	5.43	3.18	3.10	3.51	3.01
45	7.87	8.82	11.7	8.22	6.86	7.95	8.62	9.38	9.36	9.37	8.53	7.78	1.50	1.82	4.61	2.71	2.68	3.01	2.34
50	8.22	9.04	12.2	8.23	7.48	8.96	9.29	9.88	10.0	9.64	9.24	8.14	0.92	1.43	4.02	1.93	2.10	2.58	1.88
55	8.46	9.54	12.4	8.17	8.01	9.49	10.3	10.7	10.6	10.4	9.85	8.79	0.15	0.84	3.35	1.52	1.78	2.17	1.48
60	9.46	9.59	12.7	8.20	8.26	10.0	10.8	10.8	10.8	10.8	10.6	9.40	0.08	0.25	2.63	1.52	1.56	1.75	1.50
65	9.52	9.93	13.2	8.31	8.64	10.7	11.4	11.1	11.0	11.1	10.8	9.71	0.08	0.22	2.14	1.28	1.58	1.41	1.35
70	9.62	10.5	13.6	8.75	9.30	10.8	11.8	11.1	11.0	11.2	11.1	10.1	0.00	0.20	1.75	0.74	1.34	1.31	1.00
75	9.96	10.7	14.0	9.29	9.38	11.1	12.1	11.2	10.8	11.0	11.6	10.4	0.00	0.17	1.46	0.30	0.97	1.34	0.95
80	10.3	10.9	14.3	9.44	9.61	11.2	12.2	11.1	10.3	10.9	12.0	10.7	0.00	0.00	0.96	0.25	0.59	1.00	0.89
85	10.6	11.1	14.7	9.51	9.86	11.3	12.3	10.9	10.1	10.7	12.0	10.7	0.00	0.00	0.58	0.25	0.59	0.84	0.86
90	10.8	11.3	14.8	9.72	9.96	11.6	12.3	10.6	9.89	10.2	12.0	10.8	0.00	0.00	0.58	0.25	0.59	0.84	0.93
95	10.7	11.3	14.8	9.71	9.96	11.5	12.3	10.6	9.64	10.1	11.9	10.7	0.00	0.00	0.60	0.28	0.59	0.84	0.98
100	10.7	11.6	14.8	9.99	9.96	11.4	12.3	10.2	9.39	9.94	11.6	10.3	0.00	0.00	0.79	0.23	0.76	0.92	1.16
105	10.4	11.7	14.8	10.0	9.96	11.2	12.2	10.1	9.04	9.63	11.4	10.1	0.00	0.00	0.99	0.40	0.83	1.13	1.38
110	10.2	11.6	14.3	10.1	9.96	10.9	11.6	10.1	8.81	9.39	11.0	9.55	0.00	0.26	1.09	0.57	0.92	1.51	1.59
115	9.71	11.5	14.2	10.3	9.84	10.5	11.0	9.63	8.53	9.04	10.5	9.29	0.21	0.50	1.80	0.94	1.34	1.84	2.08
120	9.51	11.5	13.8	10.3	9.48	10.1	10.5	9.29	8.21	8.51	10.1	8.80	0.52	0.93	2.42	1.46	1.77	2.36	2.51
125	9.04	11.2	13.3	10.2	9.21	9.54	9.96	8.86	7.76	8.35	9.26	8.23	1.01	1.80	3.27	2.01	2.43	3.07	3.34
130	8.71	10.9	12.9	10.2	8.76	8.96	8.96	8.45	7.37	7.88	8.70	7.62	1.55	2.26	4.43	2.76	2.92	3.77	4.01
135	8.11	10.5	12.2	9.83	8.42	8.32	8.37	7.85	6.88	7.37	7.79	7.21	2.35	3.02	5.37	3.49	3.60	4.44	4.84
140	7.57	9.99	11.5	9.60	8.16	7.63	7.70	7.15	6.45	6.91	6.87	6.73	3.27	3.77	6.44	4.44	4.27	5.19	5.36
145	7.12	9.43	10.9	9.24	7.98	7.45	6.81	6.70	5.99	6.20	6.21	6.33	4.19	5.02	7.53	5.60	5.02	5.44	5.36
150	6.78	8.87	10.2	8.82	7.67	6.99	6.36	6.09	5.44	5.94	5.89	6.19	4.77	5.61	7.89	6.53	5.61	5.44	5.36
155	6.77	8.37	9.54	8.45	7.38	6.92	6.04	5.61	5.20	5.36	5.59	6.05	5.27	6.03	7.87	7.56	5.97	5.44	5.36
160	6.52	7.84	8.79	8.29	6.92	6.53	6.08	5.52	5.27	5.27	5.45	5.90	5.94	6.27	7.45	7.97	6.44	5.44	5.23
165	6.11	7.34	8.25	7.90	6.86	6.19	5.36	4.86	4.27	4.81	5.19	5.60	5.88	6.20	7.03	7.61	5.70	5.39	4.94
170	4.35	5.95	6.44	6.21	5.69	5.11	4.10	3.69	2.26	3.18	4.35	5.05	5.69	5.77	6.69	5.94	2.52	4.60	4.36
175	0.86	2.54	2.81	2.94	2.35	2.54	1.89	2.09	1.39	1.60	1.84	1.98	2.17	2.17	2.48	1.47	0.17	0.00	1.23
180	0.00	0.00	0.00	0.00	0.00	0.00	0.00	0.00	0.00	0.00	0.00	0.00	0.00	0.00	0.00	0.00	0.00	0.00	0.00

C Range: 0 - 360DEG
 C Interval: 15.0DEG
 Test Speed: HIGH
 Temperature:24.5°C
 Operators:Dingmin Zhang
 Test Date:2025-12-04

γ Range: 0 - 180DEG
 γ Interval: 0.5DEG
 Test System:EVERFINE GO-R5000_V2 SYSTEM V2.00.463
 Humidity:65.0%
 Test Distance:30.000m [K=0.9305]
 Remarks:

LUMINOUS DISTRIBUTION INTENSITY DATA

Test:U:120.32V I:0.1881A P:22.472W PF:0.9930 Freq:60.01Hz		
Lamp Flux:72.8185x1 lm		
NAME:	TYPE:	WEIGHT:
SPEC.:	DIM.:	SERIAL No.:
MFR.:	SUR.:	Shielding Angle:

Table--2

UNIT: cd

C (DEG) \ γ (DEG)	285	300	315	330	345														
0	8.45	8.54	8.62	8.71	8.62														
5	7.61	7.54	7.65	7.94	8.12														
10	6.03	5.99	6.28	6.45	6.53														
15	5.83	5.94	6.08	6.21	6.13														
20	5.44	5.61	5.93	6.00	6.07														
25	5.36	5.29	5.32	5.50	5.78														
30	4.67	4.60	4.68	4.48	4.78														
35	3.77	3.77	3.43	3.42	3.49														
40	2.56	2.43	2.13	2.01	2.51														
45	1.76	1.50	1.44	1.17	1.51														
50	1.16	1.15	0.95	0.64	1.17														
55	0.81	0.59	0.50	0.24	0.42														
60	0.33	0.33	0.17	0.23	0.08														
65	0.31	0.08	0.08	0.25	0.08														
70	0.28	0.08	0.08	0.00	0.00														
75	0.26	0.00	0.08	0.00	0.00														
80	0.16	0.00	0.00	0.00	0.00														
85	0.25	0.00	0.00	0.00	0.00														
90	0.28	0.00	0.00	0.00	0.00														
95	0.29	0.00	0.00	0.00	0.00														
100	0.50	0.00	0.00	0.00	0.00														
105	0.77	0.08	0.08	0.17	0.00														
110	1.25	0.31	0.34	0.17	0.21														
115	1.68	0.84	0.75	0.72	0.50														
120	2.18	1.34	1.36	1.34	1.06														
125	3.10	2.18	2.04	1.86	1.42														
130	3.68	2.59	2.48	2.43	2.11														
135	4.35	3.39	3.18	2.85	2.59														
140	5.02	4.35	3.85	3.51	3.19														
145	5.40	4.61	4.44	4.03	3.77														
150	5.41	5.27	4.48	4.27	4.52														
155	5.38	5.27	4.51	4.39	4.52														
160	4.83	5.02	4.41	4.32	4.48														
165	4.36	4.10	4.10	4.26	4.06														
170	3.69	3.51	3.59	3.16	2.68														
175	1.50	1.17	0.67	1.00	0.17														
180	0.00	0.00	0.00	0.00	0.00														

C Range: 0 - 360DEG
 C Interval: 15.0DEG
 Test Speed: HIGH
 Temperature:24.5°C
 Operators:Dingmin Zhang
 Test Date:2025-12-04

γ Range: 0 - 180DEG
 γ Interval: 0.5DEG
 Test System:EVERFINE GO-R5000_V2 SYSTEM V2.00.463
 Humidity:65.0%
 Test Distance:30.000m [K=0.9305]
 Remarks: