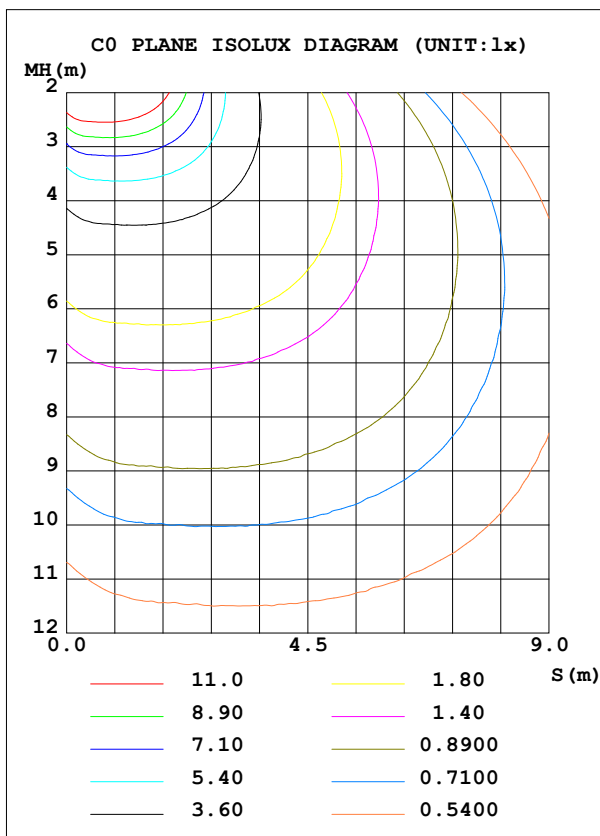
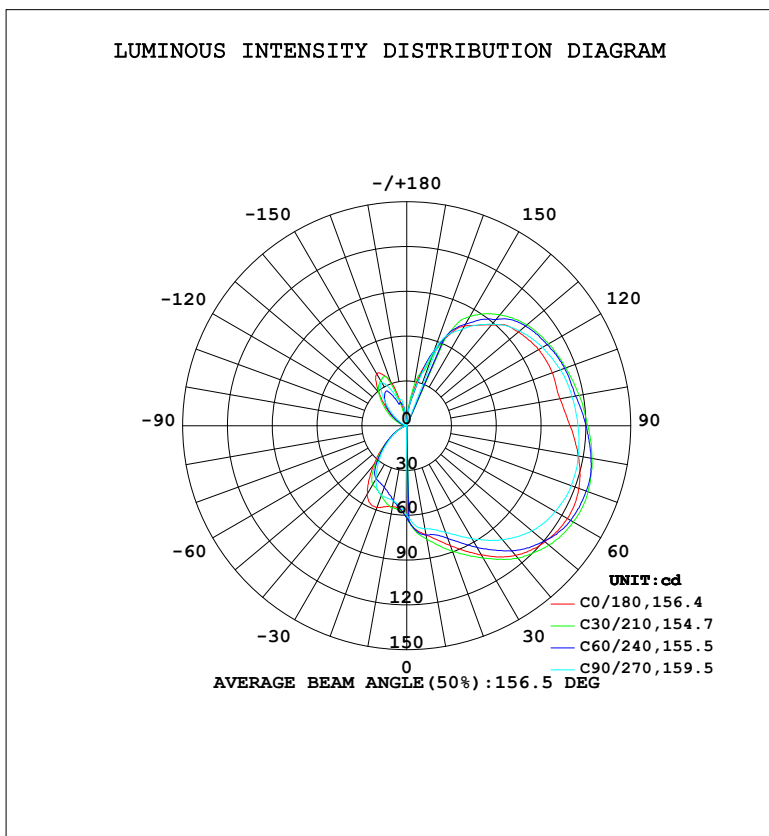


LUMINAIRE PHOTOMETRIC TEST REPORT

Test:U:120.25V I:0.5523A P:66.208W PF:0.9968 Freq:60.01Hz Lamp Flux:750.522x1 lm		
NAME:	TYPE:	WEIGHT:
SPEC.:	DIM.:	SERIAL No.:
MFR.:	SUR.:	Shielding Angle:

DATA OF LAMP		PHOTOMETRIC DATA			
MODEL	HF7103-AB-WHT	Imax (cd)	140.6	S/MH (C0/180)	1.20
NOMINAL POWER (W)		LOR (%)	100.0	S/MH (C90/270)	1.07
RATED VOLTAGE (V)	120	TOTAL FLUX (lm)	750.52	η UP, DN (C0-180)	41.4, 46.9
NOMINAL FLUX (lm)	750.522	CIE CLASS	DIFFUSE	η UP, DN (C180-360)	4.7, 6.9
LAMPS INSIDE	1	η up (%)	46.1	CIBSE SHR NOM	1.25
TEST VOLTAGE (V)	120.338	η down (%)	53.9	CIBSE SHR MAX	1.35



C Range: 0 - 360DEG
 C Interval: 15.0DEG
 Test Speed: HIGH
 Temperature: 24.5°C
 Operators: Dingmin Zhang
 Test Date: 2025-12-04

γ Range: 0 - 180DEG
 γ Interval: 0.5DEG
 Test System: EVERFINE GO-R5000_V2 SYSTEM V2.00.463
 Humidity: 65.0%
 Test Distance: 30.000m [K=0.9305]
 Remarks:

ZONAL FLUX DIAGRAM

ZONAL FLUX DIAGRAM:

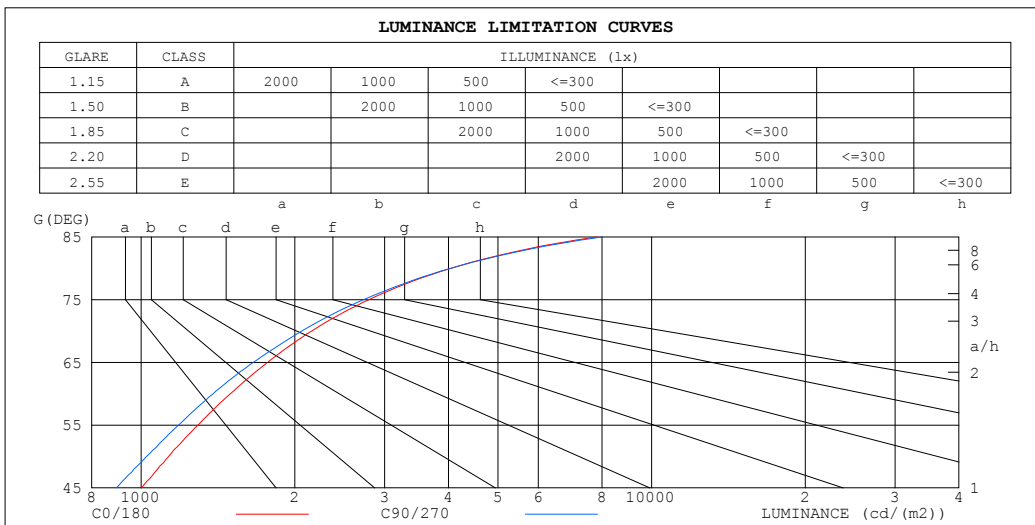
γ	C0	C45	C90	C135	C180	C225	C270	C315	γ	Φ zone	Φ total	%lum, lamp
10	73.88	76.08	70.13	69.99	55.06	53.39	51.17	57.55	0- 10	6.007	6.007	0.80,0.80
20	85.33	84.16	75.95	77.27	58.32	45.55	49.49	50.11	10- 20	18.19	24.20	3.22,3.22
30	99.91	98.36	87.36	90.05	52.95	42.83	41.58	44.76	20- 30	31.07	55.26	7.36,7.36
40	113.3	113.2	99.83	104.5	35.02	31.80	27.93	36.45	30- 40	43.58	98.84	13.2,13.2
50	120.8	123.1	109.4	117.9	18.91	18.69	16.21	20.85	40- 50	52.84	151.7	20.2,20.2
60	124.2	126.3	114.9	127.7	8.074	9.239	7.923	9.638	50- 60	59.21	210.9	28.1,28.1
70	122.6	124.6	117.3	133.5	2.562	2.969	2.951	3.163	60- 70	63.27	274.2	36.5,36.5
80	116.7	118.9	116.5	137.2	0.9301	0.1261	0.5900	0.3530	70- 80	65.05	339.2	45.2,45.2
90	109.5	110.6	114.6	136.7	0.9699	0	0.1649	0.4152	80- 90	64.97	404.2	53.9,53.9
100	104.4	103.0	112.4	135.4	1.427	0.9351	0.2360	1.286	90-100	63.41	467.6	62.3,62.3
110	103.7	102.1	109.7	129.2	3.556	3.404	1.520	3.332	100-110	60.91	528.5	70.4,70.4
120	102.0	101.0	104.9	121.3	8.451	8.079	5.644	7.762	110-120	57.32	585.8	78.1,78.1
130	97.80	98.53	98.92	109.3	16.99	13.78	13.22	14.72	120-130	52.30	638.1	85,85
140	88.04	90.03	88.65	95.43	29.00	19.98	24.16	23.99	130-140	45.28	683.4	91.1,91.1
150	77.19	78.89	74.93	80.28	40.08	24.06	33.47	33.40	140-150	35.91	719.3	95.8,95.8
160	52.15	49.72	52.92	46.55	30.92	20.40	20.23	29.75	150-160	22.59	741.9	98.9,98.9
170	20.64	22.58	18.60	27.16	9.678	10.86	15.72	6.059	160-170	7.715	749.6	99.9,99.9
180	0	0	0	0	0	0	0	0.0876	170-180	0.8928	750.5	100,100
DEG	LUMINOUS INTENSITY:cd									UNIT:lm		

C Range: 0 - 360DEG
 C Interval: 15.0DEG
 Test Speed: HIGH
 Temperature:24.5°C
 Operators:Dingmin Zhang
 Test Date:2025-12-04

γ Range: 0 - 180DEG
 γ Interval: 0.5DEG
 Test System:EVERFINE GO-R5000_V2 SYSTEM V2.00.463
 Humidity:65.0%
 Test Distance:30.000m [K=0.9305]
 Remarks:

LUMINANCE LIMITATION CURVES

Test:U:120.25V I:0.5523A P:66.208W PF:0.9968 Freq:60.01Hz Lamp Flux:750.522x1 lm		
NAME:	TYPE:	WEIGHT:
SPEC.:	DIM.:	SERIAL No.:
MFR.:	SUR.:	Shielding Angle:



LUMINANCE cd/(m2)		
G (DEG)	C0/180	C90/270
85	7806	8000
80	4045	4039
75	2794	2727
70	2158	2064
65	1768	1658
60	1495	1383
55	1292	1184
50	1131	1024
45	1003	894

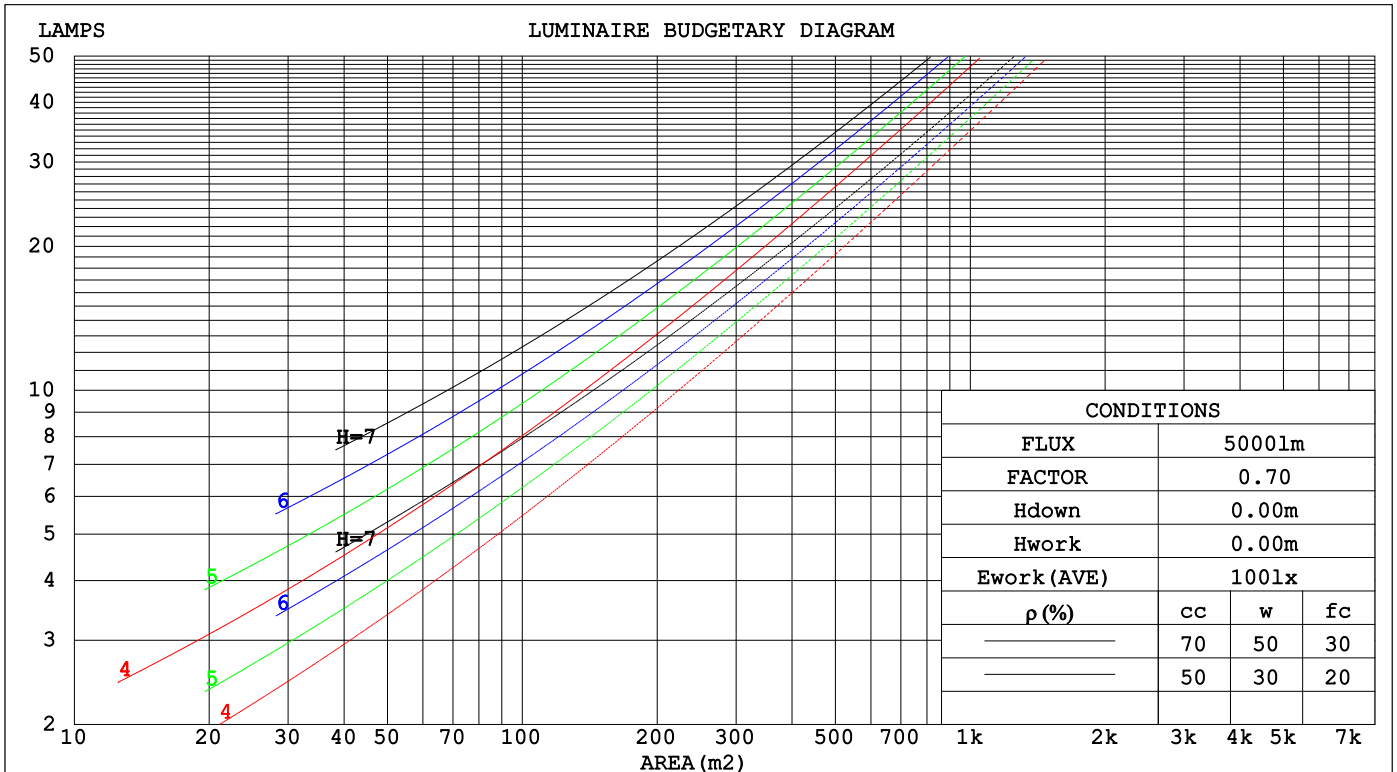
C Range: 0 - 360DEG
 C Interval: 15.0DEG
 Test Speed: HIGH
 Temperature: 24.5°C
 Operators: Dingmin Zhang
 Test Date: 2025-12-04

γ Range: 0 - 180DEG
 γ Interval: 0.5DEG
 Test System: EVERFINE GO-R5000_V2 SYSTEM V2.00.463
 Humidity: 65.0%
 Test Distance: 30.000m [K=0.9305]
 Remarks:

CU AND LUMINAIRE BUDGETARY ESTIMATE DIAGRAM

Test:U:120.25V I:0.5523A P:66.208W PF:0.9968 Freq:60.01Hz		
Lamp Flux:750.522x1 lm		
NAME:	TYPE:	WEIGHT:
SPEC.:	DIM.:	SERIAL No.:
MFR.:	SUR.:	Shielding Angle:

pcc	80%			70%			50%			30%			10%			0
pw	50%	30%	10%	50%	30%	10%	50%	30%	10%	50%	30%	10%	50%	30%	10%	0
pf _c	20%			20%			20%			20%			20%			0
RCR	RCR:Room Cavity Ratio						Coefficients of Utilization(CU)									
0.0	1.08	1.08	1.08	1.00	1.00	1.00	.85	.85	.85	.72	.72	.72	.60	.60	.60	.54
1.0	.88	.83	.78	.81	.77	.72	.69	.65	.61	.57	.54	.51	.46	.44	.42	.37
2.0	.75	.67	.60	.69	.62	.56	.58	.52	.48	.48	.44	.40	.38	.35	.32	.28
3.0	.65	.56	.48	.59	.51	.45	.50	.44	.38	.41	.36	.32	.33	.29	.26	.22
4.0	.56	.47	.40	.52	.44	.37	.44	.37	.32	.36	.31	.26	.29	.25	.21	.17
5.0	.50	.40	.33	.46	.37	.31	.38	.32	.27	.32	.26	.22	.25	.21	.18	.14
6.0	.44	.35	.29	.41	.33	.27	.34	.28	.23	.28	.23	.19	.23	.19	.15	.12
7.0	.40	.31	.25	.37	.29	.23	.31	.24	.20	.26	.20	.16	.21	.16	.13	.11
8.0	.36	.27	.21	.33	.25	.20	.28	.22	.17	.23	.18	.14	.19	.15	.12	.09
9.0	.33	.24	.19	.30	.23	.18	.26	.19	.15	.21	.16	.13	.17	.13	.10	.08
10.0	.30	.22	.17	.28	.20	.16	.23	.18	.13	.20	.15	.11	.16	.12	.09	.07



C Range: 0 - 360DEG
 C Interval: 15.0DEG
 Test Speed: HIGH
 Temperature:24.5°C
 Operators:Dingmin Zhang
 Test Date:2025-12-04

γ Range: 0 - 180DEG
 γ Interval: 0.5DEG
 Test System:EVERFINE GO-R5000_V2 SYSTEM V2.00.463
 Humidity:65.0%
 Test Distance:30.000m [K=0.9305]
 Remarks:

WEC AND CCEC

Test:U:120.25V I:0.5523A P:66.208W PF:0.9968 Freq:60.01Hz								
Lamp Flux:750.522x1 lm								
NAME:			TYPE:			WEIGHT:		
SPEC.:			DIM.:			SERIAL No.:		
MFR.:			SUR.:			Shielding Angle:		

ρ _{cc}	80%			70%			50%			30%			10%			0
ρ _w	50%	30%	10%	50%	30%	10%	50%	30%	10%	50%	30%	10%	50%	30%	10%	0
ρ _{fc}	20%			20%			20%			20%			20%			0
RCR	RCR:Room Cavity Ratio						Wall Exitance Coefficients(WEC)									
0.0																
1.0	.396	.225	.071	.375	.214	.068	.335	.192	.061	.299	.172	.055	.265	.154	.050	
2.0	.334	.183	.056	.315	.173	.053	.279	.155	.048	.245	.138	.043	.214	.121	.038	
3.0	.293	.156	.047	.276	.148	.044	.242	.131	.040	.212	.116	.036	.183	.101	.031	
4.0	.262	.136	.040	.246	.129	.038	.216	.114	.034	.187	.101	.030	.161	.087	.027	
5.0	.237	.121	.035	.222	.114	.033	.194	.101	.030	.168	.089	.026	.144	.077	.023	
6.0	.217	.109	.031	.203	.103	.030	.177	.091	.026	.153	.080	.023	.131	.069	.020	
7.0	.199	.099	.028	.187	.093	.027	.163	.082	.024	.141	.072	.021	.120	.062	.018	
8.0	.185	.090	.025	.173	.085	.024	.151	.075	.022	.130	.066	.019	.110	.057	.016	
9.0	.172	.083	.023	.161	.078	.022	.140	.069	.020	.121	.061	.017	.102	.052	.015	
10.0	.160	.077	.021	.150	.073	.020	.131	.064	.018	.113	.056	.016	.096	.048	.014	

ρ _{cc}	80%			70%			50%			30%			10%			0
ρ _w	50%	30%	10%	50%	30%	10%	50%	30%	10%	50%	30%	10%	50%	30%	10%	0
ρ _{fc}	20%			20%			20%			20%			20%			0
RCR	RCR:Room Cavity Ratio						Ceiling Cavity Exitance Coefficients(CCEC)									
0.0	.542	.542	.542	.463	.463	.463	.316	.316	.316	.182	.182	.182	.058	.058	.058	
1.0	.541	.510	.482	.463	.438	.415	.316	.301	.287	.182	.174	.167	.058	.056	.054	
2.0	.535	.489	.450	.458	.421	.389	.314	.291	.271	.181	.169	.159	.058	.055	.052	
3.0	.528	.473	.430	.452	.408	.373	.311	.284	.261	.179	.166	.154	.058	.054	.050	
4.0	.520	.462	.417	.447	.399	.362	.307	.278	.255	.178	.163	.151	.057	.053	.050	
5.0	.513	.453	.408	.441	.391	.355	.304	.274	.251	.176	.161	.149	.057	.052	.049	
6.0	.506	.445	.401	.435	.385	.350	.300	.270	.247	.174	.159	.147	.056	.052	.049	
7.0	.499	.439	.397	.429	.380	.346	.297	.267	.245	.172	.157	.146	.056	.051	.048	
8.0	.493	.434	.393	.424	.376	.343	.294	.264	.243	.171	.156	.145	.055	.051	.048	
9.0	.487	.429	.390	.419	.373	.341	.291	.262	.242	.169	.155	.144	.055	.051	.048	
10.0	.481	.425	.388	.415	.369	.339	.288	.260	.241	.168	.154	.144	.054	.050	.048	

C Range: 0 - 360DEG
 C Interval: 15.0DEG
 Test Speed: HIGH
 Temperature:24.5°C
 Operators:Dingmin Zhang
 Test Date:2025-12-04

γ Range: 0 - 180DEG
 γ Interval: 0.5DEG
 Test System:EVERFINE GO-R5000_V2 SYSTEM V2.00.463
 Humidity:65.0%
 Test Distance:30.000m [K=0.9305]
 Remarks:

UGR(Unified Glare Rating) Table

Test:U:120.25V I:0.5523A P:66.208W PF:0.9968 Freq:60.01Hz										
Lamp Flux:750.522x1 lm										
NAME:			TYPE:			WEIGHT:				
SPEC.:			DIM.:			SERIAL No.:				
MFR.:			SUR.:			Shielding Angle:				
ceiling/cavity	0.7	0.7	0.5	0.5	0.3	0.7	0.7	0.5	0.5	0.3
walls	0.5	0.3	0.5	0.3	0.3	0.5	0.3	0.5	0.3	0.3
working plane	0.2	0.2	0.2	0.2	0.2	0.2	0.2	0.2	0.2	0.2
Room dimensions	Viewed crosswise					Viewed endwise				
x = 2H y = 2H	13.5	14.6	14.3	15.4	16.5	13.0	14.1	13.8	14.9	16.0
3H	16.7	17.7	17.6	18.6	19.7	16.3	17.3	17.1	18.2	19.3
4H	18.5	19.4	19.4	20.3	21.5	18.1	19.1	19.0	19.9	21.1
6H	20.4	21.3	21.2	22.2	23.3	20.1	21.0	21.0	21.9	23.0
8H	21.4	22.2	22.3	23.1	24.3	21.2	22.0	22.1	22.9	24.1
12H	22.5	23.3	23.4	24.3	25.4	22.4	23.2	23.3	24.1	25.3
4H 2H	14.4	15.3	15.3	16.2	17.4	14.1	15.0	14.9	15.9	17.0
3H	17.8	18.6	18.7	19.5	20.7	17.5	18.3	18.4	19.2	20.4
4H	19.7	20.5	20.6	21.4	22.6	19.4	20.2	20.4	21.1	22.3
6H	21.9	22.5	22.8	23.5	24.7	21.6	22.3	22.6	23.2	24.5
8H	23.0	23.6	24.0	24.6	25.8	22.8	23.4	23.8	24.4	25.6
12H	24.3	24.9	25.2	25.8	27.1	24.1	24.7	25.1	25.7	26.9
8H 4H	20.3	21.0	21.3	21.9	23.2	20.1	20.8	21.1	21.7	22.9
6H	22.8	23.3	23.7	24.3	25.5	22.6	23.1	23.5	24.1	25.4
8H	24.1	24.6	25.1	25.6	26.9	24.0	24.5	25.0	25.5	26.7
12H	25.7	26.1	26.7	27.1	28.4	25.6	26.0	26.6	27.0	28.3
12H 4H	20.5	21.1	21.5	22.1	23.3	20.3	20.9	21.3	21.9	23.1
6H	23.0	23.5	24.0	24.5	25.8	22.9	23.3	23.8	24.3	25.6
8H	24.5	24.9	25.5	25.9	27.2	24.4	24.8	25.4	25.8	27.1
Variations with the observer position at spacings(CIE Pub.117):										
S = 1.0H	+ 0.1 / - 0.1					+ 0.1 / - 0.1				
1.5H	+ 0.3 / - 0.3					+ 0.3 / - 0.3				
2.0H	+ 0.4 / - 0.5					+ 0.4 / - 0.5				

CIE Pub.117, 750.5 lm Total Lamp Luminous Flux Corrected (8log(F/F0) = -1.0)
 Area: 0.16611 m2

C Range: 0 - 360DEG	γ Range: 0 - 180DEG
C Interval: 15.0DEG	γ Interval: 0.5DEG
Test Speed: HIGH	Test System:EVERFINE GO-R5000_V2 SYSTEM V2.00.463
Temperature:24.5°C	Humidity:65.0%
Operators:Dingmin Zhang	Test Distance:30.000m [K=0.9305]
Test Date:2025-12-04	Remarks:

UTILIZATION FACTORS TABLE

Test:U:120.25V I:0.5523A P:66.208W PF:0.9968 Freq:60.01Hz Lamp Flux:750.522x1 lm		
NAME:	TYPE:	WEIGHT:
SPEC.:	DIM.:	SERIAL No.:
MFR.:	SUR.:	Shielding Angle:

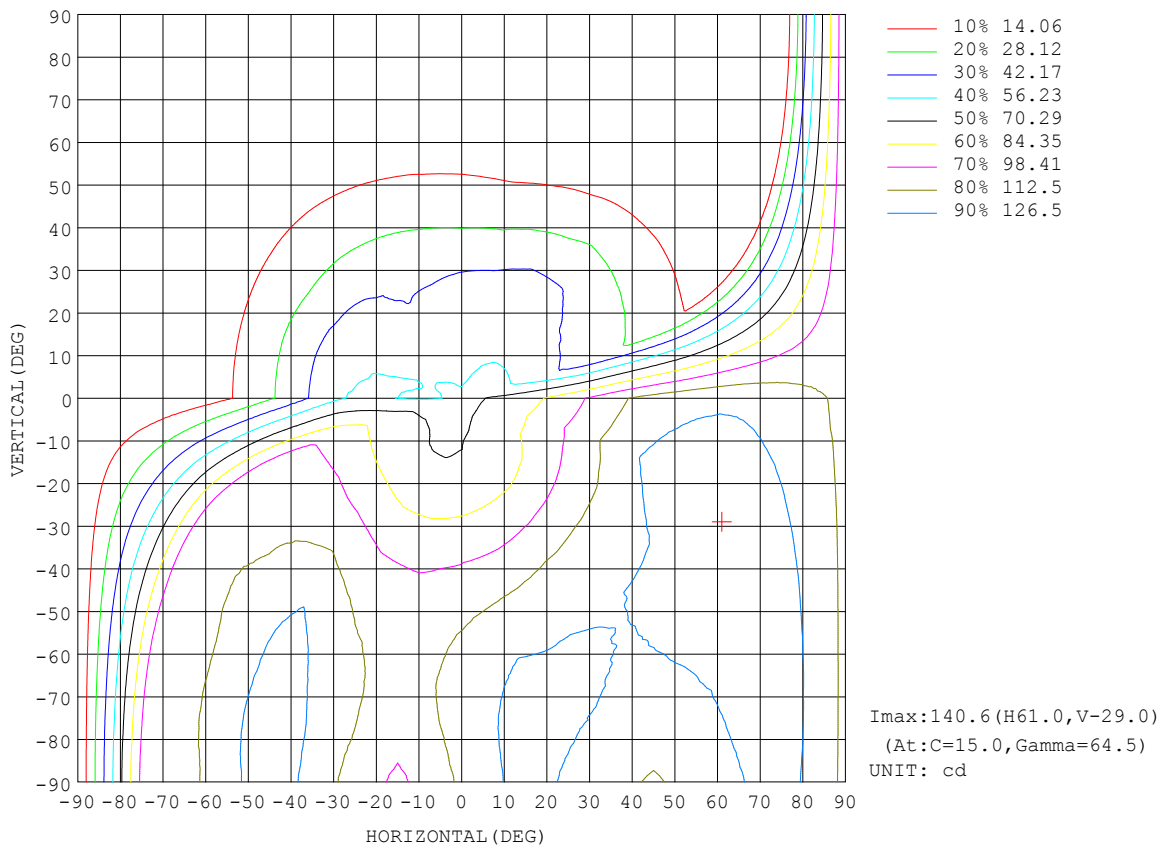
REFLECTANCE										
Ceiling	0.8	0.8	0.8	0.7	0.7	0.7	0.5	0.5	0.5	0
Walls	0.7	0.5	0.3	0.7	0.5	0.3	0.7	0.5	0.3	0
Working plane	0.2	0.2	0.2	0.2	0.2	0.2	0.2	0.2	0.2	0
ROOM INDEX	UTILIZATION FACTORS (PERCENT) $k(RI) \times RCR = 5$									
k = 0.60	38	26	18	36	25	18	33	23	17	9
0.80	47	33	25	44	32	24	39	29	22	13
1.00	54	40	31	51	38	30	45	36	27	16
1.25	61	47	38	57	45	36	50	40	33	19
1.50	66	53	43	62	50	41	53	44	37	22
2.00	74	61	52	69	58	49	59	50	44	26
2.50	79	67	58	73	63	55	63	55	48	29
3.00	83	72	64	77	67	60	66	58	52	32
4.00	88	79	71	81	73	67	69	63	58	35
5.00	91	83	76	84	77	71	72	67	62	38
ROOM INDEX	UF(total)									Direct
According to DIN EN 13032-2 2004			Suspended				SHRNOM = 1.25			

C Range: 0 - 360DEG
 C Interval: 15.0DEG
 Test Speed: HIGH
 Temperature:24.5°C
 Operators:Dingmin Zhang
 Test Date:2025-12-04

γ Range: 0 - 180DEG
 γ Interval: 0.5DEG
 Test System:EVERFINE GO-R5000_V2 SYSTEM V2.00.463
 Humidity:65.0%
 Test Distance:30.000m [K=0.9305]
 Remarks:

ISOCANDELA DIAGRAM

Test:U:120.25V I:0.5523A P:66.208W PF:0.9968 Freq:60.01Hz Lamp Flux:750.522x1 lm		
NAME:	TYPE:	WEIGHT:
SPEC.:	DIM.:	SERIAL No.:
MFR.:	SUR.:	Shielding Angle:



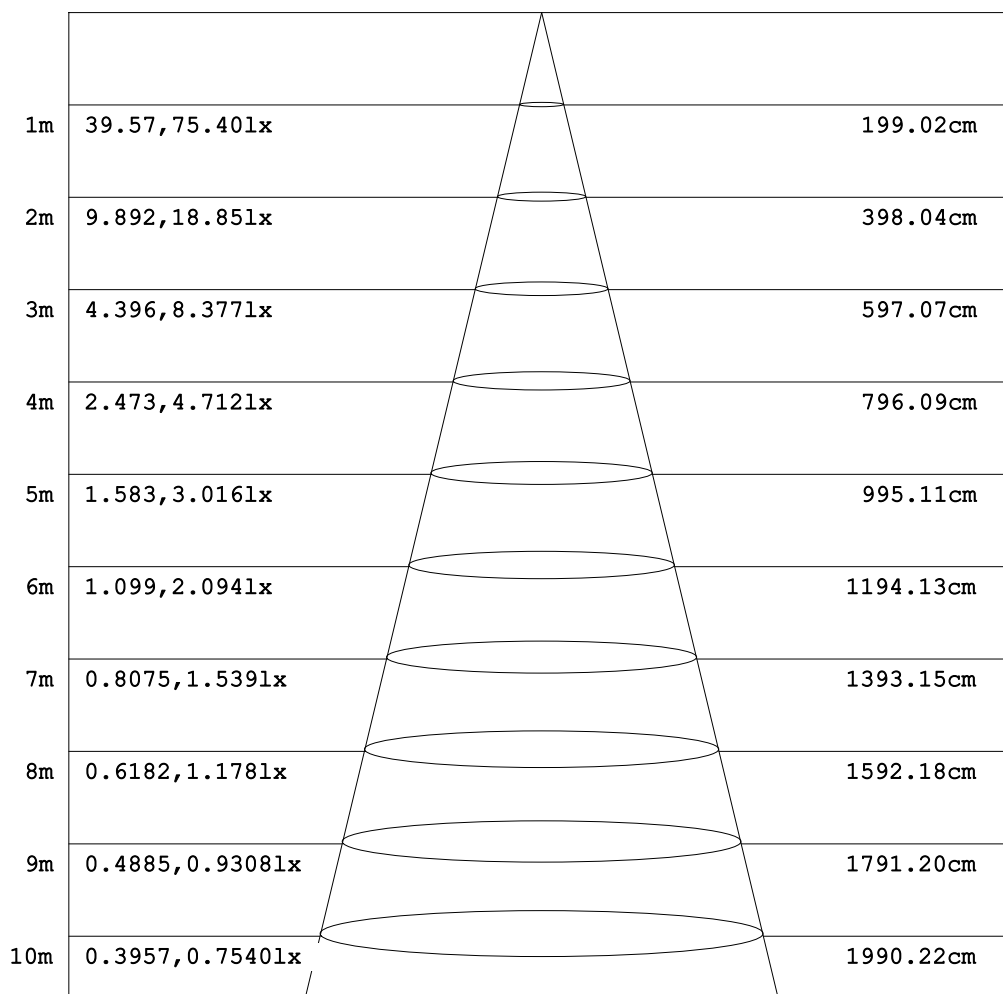
C Range: 0 - 360DEG
C Interval: 15.0DEG
Test Speed: HIGH
Temperature:24.5°C
Operators:Dingmin Zhang
Test Date:2025-12-04

γ Range: 0 - 180DEG
γ Interval: 0.5DEG
Test System:EVERFINE GO-R5000_V2 SYSTEM V2.00.463
Humidity:65.0%
Test Distance:30.000m [K=0.9305]
Remarks:

AAI Figure

Test:U:120.25V I:0.5523A P:66.208W PF:0.9968 Freq:60.01Hz Lamp Flux:750.522x1 lm		
NAME:	TYPE:	WEIGHT:
SPEC.:	DIM.:	SERIAL No.:
MFR.:	SUR.:	Shielding Angle:

Flux out:124.3 lm



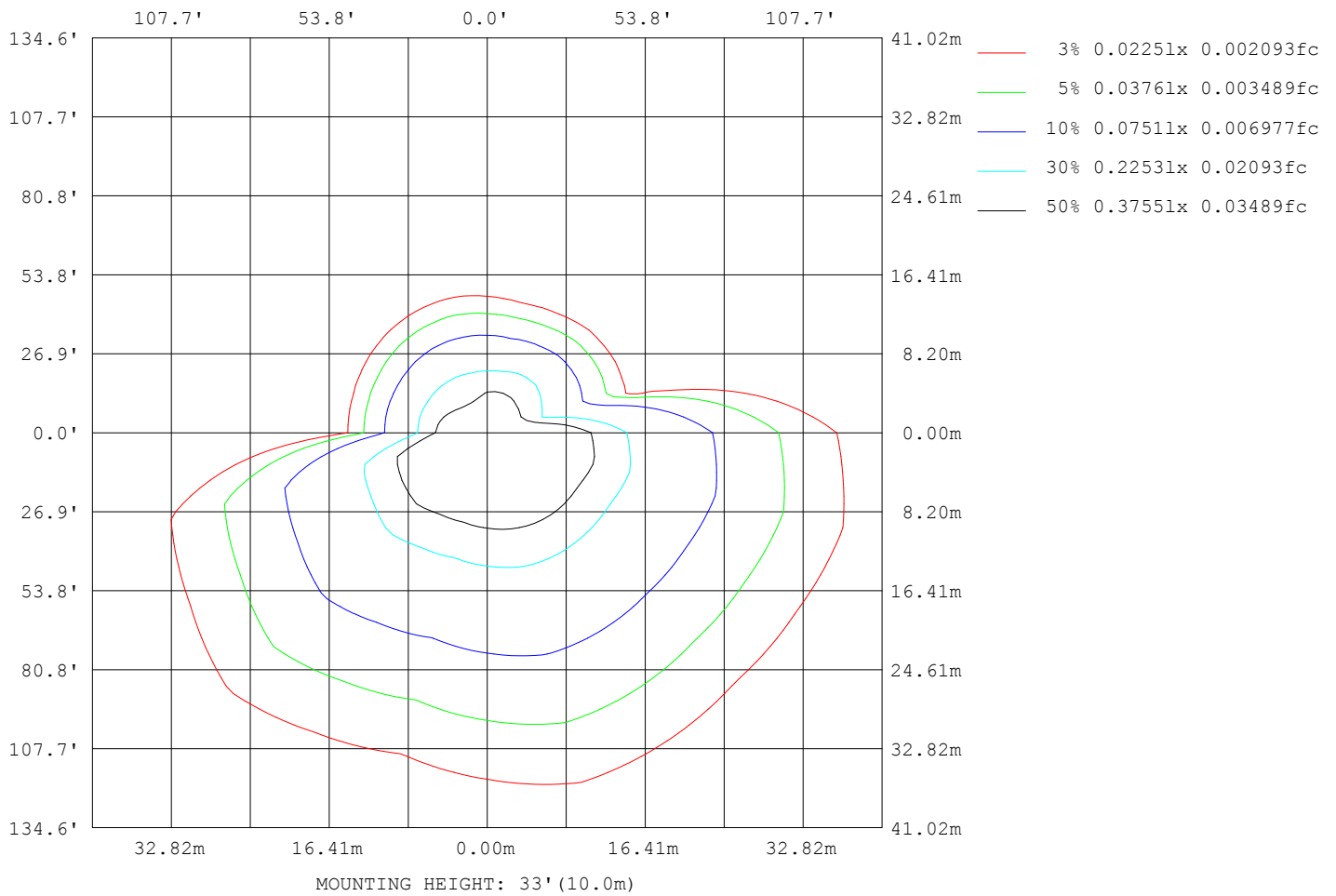
Note:The Curves indicate the illuminated area and the average illumination when the luminaire is at different distance.

C Range: 0 - 360DEG
 C Interval: 15.0DEG
 Test Speed: HIGH
 Temperature:24.5°C
 Operators:Dingmin Zhang
 Test Date:2025-12-04

γ Range: 0 - 180DEG
 γ Interval: 0.5DEG
 Test System:EVERFINE GO-R5000_V2 SYSTEM V2.00.463
 Humidity:65.0%
 Test Distance:30.000m [K=0.9305]
 Remarks:

ISOLUX DIAGRAM

Test:U:120.25V I:0.5523A P:66.208W PF:0.9968 Freq:60.01Hz Lamp Flux:750.522x1 lm		
NAME:	TYPE:	WEIGHT:
SPEC.:	DIM.:	SERIAL No.:
MFR.:	SUR.:	Shielding Angle:



C Range: 0 - 360DEG
 C Interval: 15.0DEG
 Test Speed: HIGH
 Temperature:24.5°C
 Operators:Dingmin Zhang
 Test Date:2025-12-04

γ Range: 0 - 180DEG
 γ Interval: 0.5DEG
 Test System:EVERFINE GO-R5000_V2 SYSTEM V2.00.463
 Humidity:65.0%
 Test Distance:30.000m [K=0.9305]
 Remarks:

LED Avg.L Report

Test:U:120.25V I:0.5523A P:66.208W PF:0.9968 Freq:60.01Hz Lamp Flux:750.522x1 lm		
NAME:	TYPE:	WEIGHT:
SPEC.:	DIM.:	SERIAL No.:
MFR.:	SUR.:	Shielding Angle:

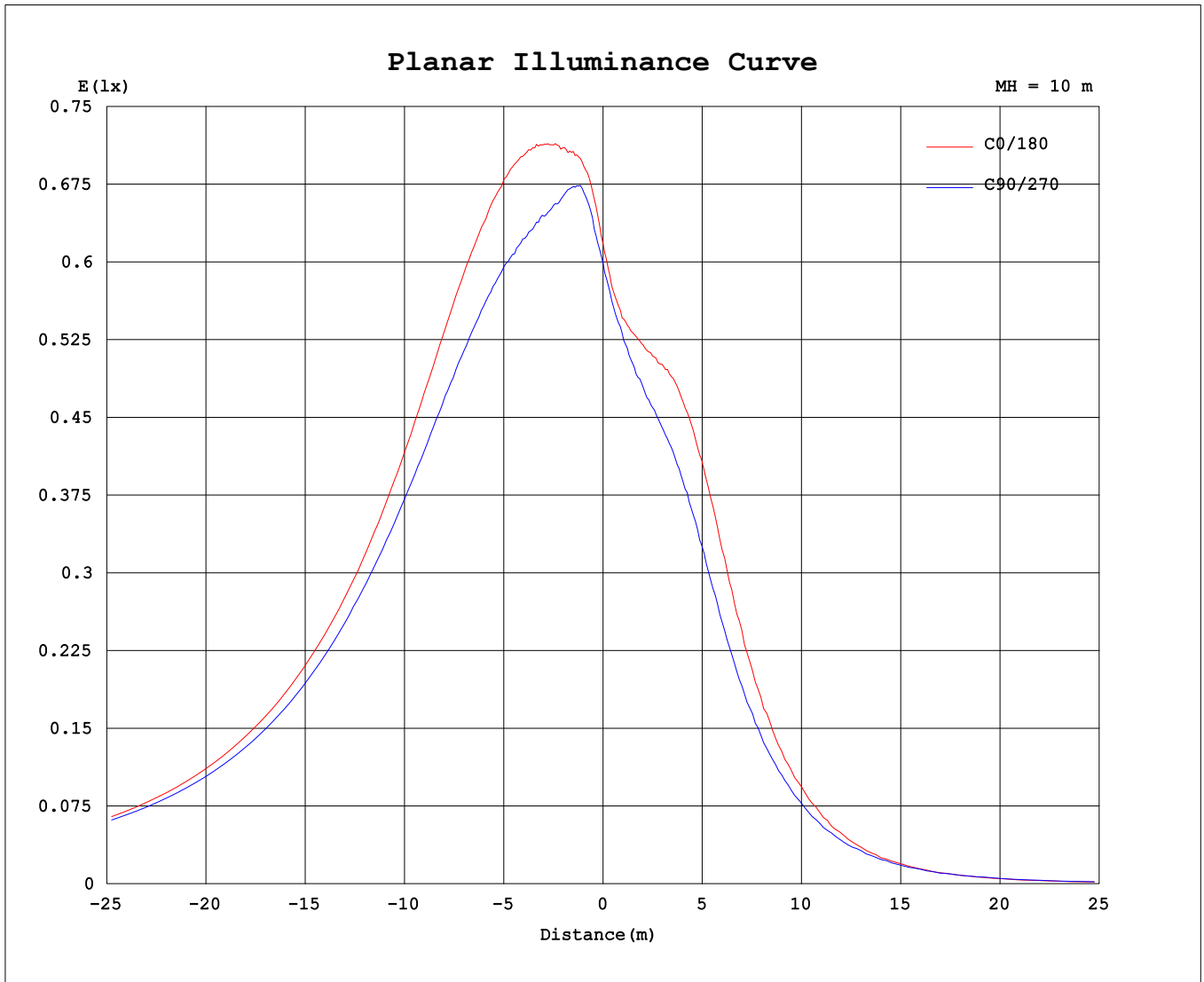
AvgL	cd/m2
L_0~180 (65) av	917
L_0~180 (75) av	1412
L_0~180 (85) av	3936
L_90~270 (65) av	865
L_90~270 (75) av	1381
L_90~270 (85) av	4003
L_45 (65) av	959
L_45 (75) av	1516
L_45 (85) av	4370

Standard: GB/T 29293-2012

C Range: 0 - 360DEG
C Interval: 15.0DEG
Test Speed: HIGH
Temperature:24.5°C
Operators:Dingmin Zhang
Test Date:2025-12-04

γ Range: 0 - 180DEG
γ Interval: 0.5DEG
Test System:EVERFINE GO-R5000_V2 SYSTEM V2.00.463
Humidity:65.0%
Test Distance:30.000m [K=0.9305]
Remarks:

Planar Illuminance Curve



C Range: 0 - 360DEG
C Interval: 15.0DEG
Test Speed: HIGH
Temperature: 24.5°C
Operators: Dingmin Zhang
Test Date: 2025-12-04

γ Range: 0 - 180DEG
γ Interval: 0.5DEG
Test System: EVERFINE GO-R5000_V2 SYSTEM V2.00.463
Humidity: 65.0%
Test Distance: 30.000m [K=0.9305]
Remarks:

LUMINOUS DISTRIBUTION INTENSITY DATA

Test:U:120.25V I:0.5523A P:66.208W PF:0.9968 Freq:60.01Hz		
Lamp Flux:750.522x1 lm		
NAME:	TYPE:	WEIGHT:
SPEC.:	DIM.:	SERIAL No.:
MFR.:	SUR.:	Shielding Angle:

Table--1

UNIT: cd

C (DEG) \ γ (DEG)	0	15	30	45	60	75	90	105	120	135	150	165	180	195	210	225	240	255	270
0	61.7	61.6	61.9	62.1	61.8	60.2	59.9	60.1	61.4	62.4	63.3	63.2	61.7	61.6	61.9	62.1	61.8	60.2	59.9
5	69.7	70.8	71.1	71.1	70.3	68.2	67.1	66.5	66.5	66.1	65.2	63.8	56.0	56.3	56.8	56.4	55.3	54.1	54.4
10	73.9	76.3	77.0	76.1	74.3	71.1	70.1	68.3	68.9	70.0	70.4	68.5	55.1	56.4	55.8	53.4	51.1	50.3	51.2
15	79.1	83.4	83.1	79.3	75.8	73.7	72.1	70.8	71.1	72.6	75.1	74.5	56.3	56.8	53.4	49.4	46.9	47.6	50.2
20	85.3	90.7	89.3	84.2	80.1	78.0	76.0	74.5	75.0	77.3	80.0	80.6	58.3	56.6	49.9	45.6	44.1	45.5	49.5
25	92.6	98.5	95.7	90.8	86.8	83.6	81.2	79.5	80.1	83.5	85.5	86.9	57.6	54.1	47.2	43.7	42.3	43.5	47.0
30	99.9	107	102	98.4	93.9	90.2	87.4	85.6	85.9	90.0	92.6	94.0	52.9	49.5	45.3	42.8	41.2	40.7	41.6
35	107	114	109	106	102	96.7	93.6	91.6	92.4	97.3	100.0	97.8	44.4	42.9	40.7	39.1	37.6	35.4	34.7
40	113	122	116	113	109	104	99.8	96.7	98.1	105	105	101	35.0	34.7	32.5	31.8	30.7	28.9	27.9
45	118	129	120	119	116	110	105	101	103	112	108	103	26.5	26.2	25.0	24.9	23.9	22.8	22.0
50	121	134	124	123	120	116	109	104	108	118	111	104	18.9	18.6	18.4	18.7	18.2	17.3	16.2
55	123	138	127	126	124	121	113	106	111	123	112	104	12.7	12.6	13.0	13.4	13.0	12.7	11.9
60	124	140	129	126	127	125	115	106	114	128	114	104	8.07	8.34	8.35	9.24	9.25	8.92	7.92
65	124	141	130	126	128	128	116	106	115	131	115	103	4.62	5.16	5.36	5.78	5.99	5.79	5.06
70	123	140	129	125	128	131	117	106	116	134	115	102	2.56	2.75	2.70	2.97	3.74	3.55	2.95
75	120	139	128	122	128	133	117	104	117	136	114	100	1.31	1.42	1.12	1.27	1.58	1.90	1.52
80	117	138	126	119	125	133	116	102	116	137	115	100	0.93	0.71	0.38	0.13	0.32	1.23	0.59
85	113	136	124	115	123	133	116	98.9	115	137	114	101	0.95	0.71	0.14	0.00	0.00	0.28	0.08
90	109	134	121	111	120	133	115	95.1	114	137	114	102	0.97	0.71	0.61	0.00	0.00	0.22	0.16
95	106	132	119	106	117	132	114	95.1	113	137	114	103	1.07	1.46	1.22	0.34	0.17	0.24	0.08
100	104	129	117	103	115	130	112	95.3	112	135	115	104	1.43	2.31	2.18	0.94	0.64	0.66	0.24
105	104	126	115	102	114	127	111	95.3	111	133	115	105	2.31	3.64	3.79	1.96	1.73	1.32	0.69
110	104	123	113	102	113	123	110	94.6	110	129	115	105	3.56	5.59	5.67	3.40	3.22	2.47	1.52
115	103	121	112	102	111	119	107	93.5	108	126	115	105	5.60	8.25	8.54	5.45	5.50	4.78	3.12
120	102	117	110	101	109	115	105	92.7	105	121	112	105	8.45	11.7	11.8	8.08	8.09	7.35	5.64
125	99.8	114	108	100	107	110	102	91.3	103	115	109	103	13.0	16.2	15.5	10.7	11.8	11.1	8.85
130	97.8	110	105	98.5	104	104	98.9	89.1	99.6	109	106	101	17.0	20.5	19.8	13.8	15.8	15.4	13.2
135	95.0	105	101	95.0	100	98.2	94.6	86.1	96.0	103	101	95.2	22.7	25.7	24.4	16.9	19.8	20.5	18.4
140	88.0	99.5	97.0	90.0	93.0	91.6	88.7	80.5	91.0	95.4	95.9	89.6	29.0	31.7	29.4	20.0	23.2	25.5	24.2
145	82.2	92.9	91.6	84.4	87.0	84.8	82.2	78.8	84.3	88.0	89.0	83.9	35.9	36.6	32.9	22.0	25.8	29.7	29.9
150	77.2	85.6	84.6	78.9	78.6	78.1	74.9	74.2	76.9	80.3	80.4	76.0	40.1	40.0	34.8	24.1	27.0	31.1	33.5
155	67.1	71.2	70.6	68.3	69.7	72.1	68.1	65.1	63.5	64.4	64.5	63.8	37.6	39.9	36.3	23.5	22.2	25.0	28.4
160	52.2	48.9	48.8	49.7	53.1	56.2	52.9	48.9	44.5	46.5	47.5	51.7	30.9	32.5	28.5	20.4	15.6	16.9	20.2
165	37.1	36.9	36.3	32.7	33.3	33.3	32.4	35.0	37.5	39.7	38.7	34.6	16.8	15.7	12.7	12.7	16.1	17.5	18.4
170	20.6	25.7	26.1	22.6	18.0	16.3	18.6	22.3	25.3	27.2	25.6	22.5	9.68	9.24	7.57	10.9	13.6	15.7	15.7
175	8.30	10.8	10.9	9.53	7.92	7.28	7.44	8.86	10.0	9.85	8.58	7.46	2.84	2.65	3.47	4.42	4.02	3.13	1.50
180	0.00	0.00	0.00	0.00	0.00	0.00	0.00	0.08	0.27	0.00	0.00	0.00	0.00	0.00	0.00	0.00	0.00	0.00	0.00

C Range: 0 - 360DEG
 C Interval: 15.0DEG
 Test Speed: HIGH
 Temperature:24.5°C
 Operators:Dingmin Zhang
 Test Date:2025-12-04

γ Range: 0 - 180DEG
 γ Interval: 0.5DEG
 Test System:EVERFINE GO-R5000_V2 SYSTEM V2.00.463
 Humidity:65.0%
 Test Distance:30.000m [K=0.9305]
 Remarks:

LUMINOUS DISTRIBUTION INTENSITY DATA

Test:U:120.25V I:0.5523A P:66.208W PF:0.9968 Freq:60.01Hz Lamp Flux:750.522x1 lm		
NAME:	TYPE:	WEIGHT:
SPEC.:	DIM.:	SERIAL No.:
MFR.:	SUR.:	Shielding Angle:

Table--2

UNIT: cd

C (DEG) \ γ (DEG)	285	300	315	330	345														
0	60.1	61.4	62.4	63.3	63.2														
5	55.6	57.6	60.2	62.3	63.1														
10	52.5	55.2	57.6	58.4	58.5														
15	51.2	53.3	53.9	53.4	52.7														
20	50.3	50.9	50.1	48.0	46.8														
25	48.4	48.9	46.7	43.9	41.0														
30	43.2	46.4	44.8	40.0	35.7														
35	36.5	40.9	41.7	37.2	32.0														
40	28.7	33.4	36.5	32.9	27.7														
45	22.1	25.0	29.0	27.3	23.5														
50	15.9	17.7	20.8	21.0	18.5														
55	10.8	12.2	14.7	15.3	14.0														
60	6.81	7.73	9.64	10.9	10.4														
65	3.97	4.38	5.87	6.99	7.19														
70	2.07	2.28	3.16	4.39	4.59														
75	0.69	0.96	1.56	1.90	2.51														
80	0.20	0.35	0.35	0.81	0.84														
85	0.09	0.09	0.35	0.32	0.00														
90	0.00	0.09	0.42	0.28	0.00														
95	0.09	0.35	0.58	0.52	0.00														
100	0.27	0.69	1.29	1.14	1.00														
105	0.56	1.15	2.02	2.07	2.25														
110	1.12	2.02	3.33	3.19	3.94														
115	2.50	3.43	5.34	5.52	6.60														
120	3.98	5.19	7.76	8.36	9.70														
125	6.82	7.93	11.0	11.6	13.5														
130	9.33	11.4	14.7	15.3	17.5														
135	13.0	15.3	18.9	19.2	21.3														
140	17.9	19.9	24.0	24.5	22.1														
145	25.0	25.3	29.0	28.8	23.3														
150	31.8	29.8	33.4	31.2	28.3														
155	31.8	30.4	36.2	34.3	26.7														
160	24.9	26.3	29.8	29.4	22.7														
165	20.3	16.8	14.0	14.1	14.0														
170	13.3	9.58	6.06	3.19	4.35														
175	0.00	0.00	0.00	0.00	1.41														
180	0.00	0.00	0.09	0.00	0.00														

C Range: 0 - 360DEG
 C Interval: 15.0DEG
 Test Speed: HIGH
 Temperature:24.5°C
 Operators:Dingmin Zhang
 Test Date:2025-12-04

γ Range: 0 - 180DEG
 γ Interval: 0.5DEG
 Test System:EVERFINE GO-R5000_V2 SYSTEM V2.00.463
 Humidity:65.0%
 Test Distance:30.000m [K=0.9305]
 Remarks: