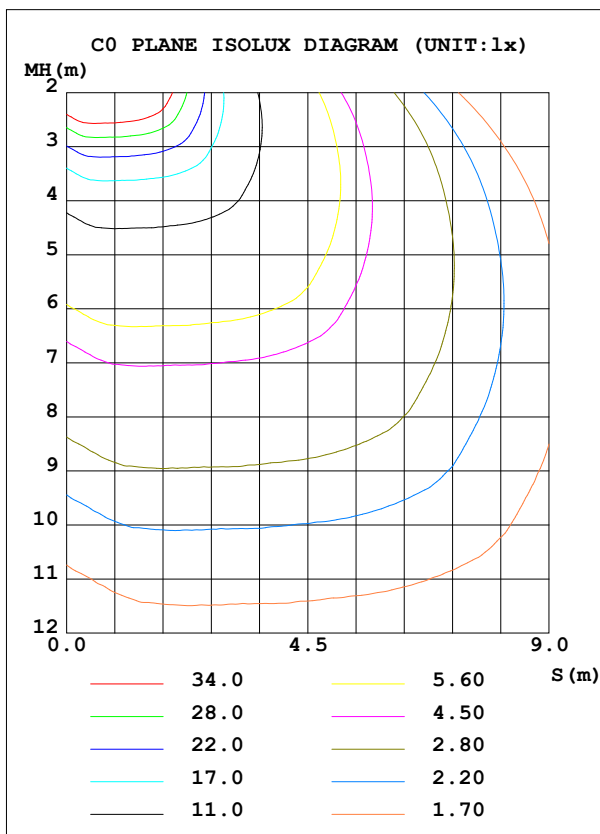
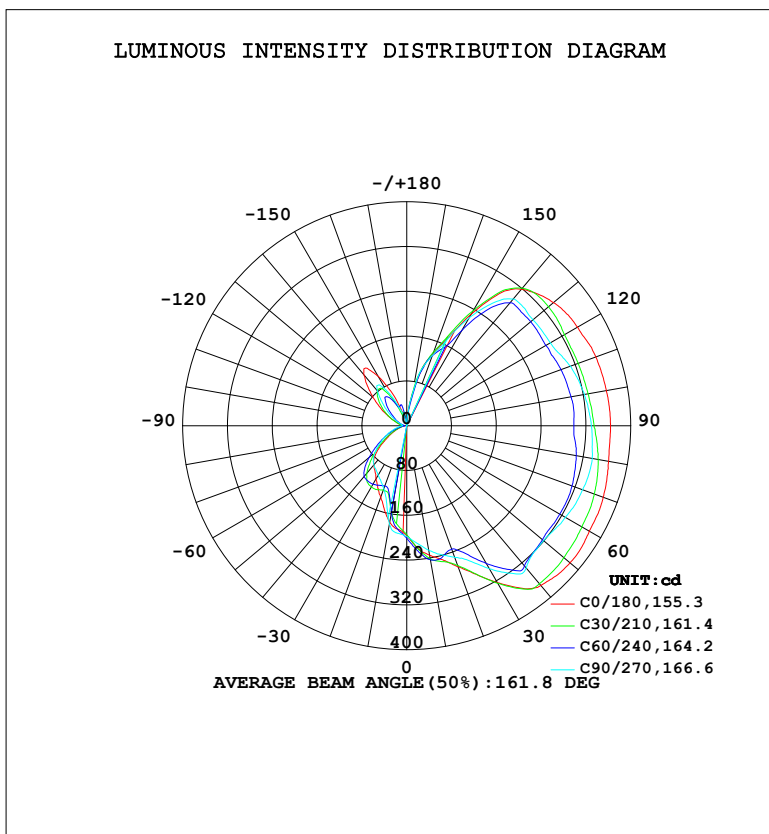


LUMINAIRE PHOTOMETRIC TEST REPORT

Test:U:120.10V I:1.8857A P:226.60W PF:0.9954 Freq:60.00Hz Lamp Flux:2188.05x1 lm		
NAME:	TYPE:	WEIGHT:
SPEC.:	DIM.:	SERIAL No.:
MFR.:	SUR.:	Shielding Angle:

DATA OF LAMP		PHOTOMETRIC DATA			
MODEL	HF7109-AB-WHT	Imax (cd)	381.8	S/MH (C0/180)	0.87
NOMINAL POWER (W)		LOR (%)	100.0	S/MH (C90/270)	0.74
RATED VOLTAGE (V)	120	TOTAL FLUX (lm)	2188.1	$\eta$ UP, DN (C0-180)	40.8, 45.8
NOMINAL FLUX (lm)	2188.05	CIE CLASS	DIFFUSE	$\eta$ UP, DN (C180-360)	5.1, 8.3
LAMPS INSIDE	1	$\eta$ up (%)	45.9	CIBSE SHR NOM	1.00
TEST VOLTAGE (V)	120.103	$\eta$ down (%)	54.1	CIBSE SHR MAX	1.15



C Range: 0 - 360DEG  
 C Interval: 15.0DEG  
 Test Speed: HIGH  
 Temperature: 24.5°C  
 Operators: 张丁泯  
 Test Date: 2025-12-05

$\gamma$  Range: 0 - 180DEG  
 $\gamma$  Interval: 0.5DEG  
 Test System: EVERFINE GO-R5000\_V2 SYSTEM V2.00.463  
 Humidity: 65.0%  
 Test Distance: 30.000m [K=0.9305]  
 Remarks:

ZONAL FLUX DIAGRAM

ZONAL FLUX DIAGRAM:

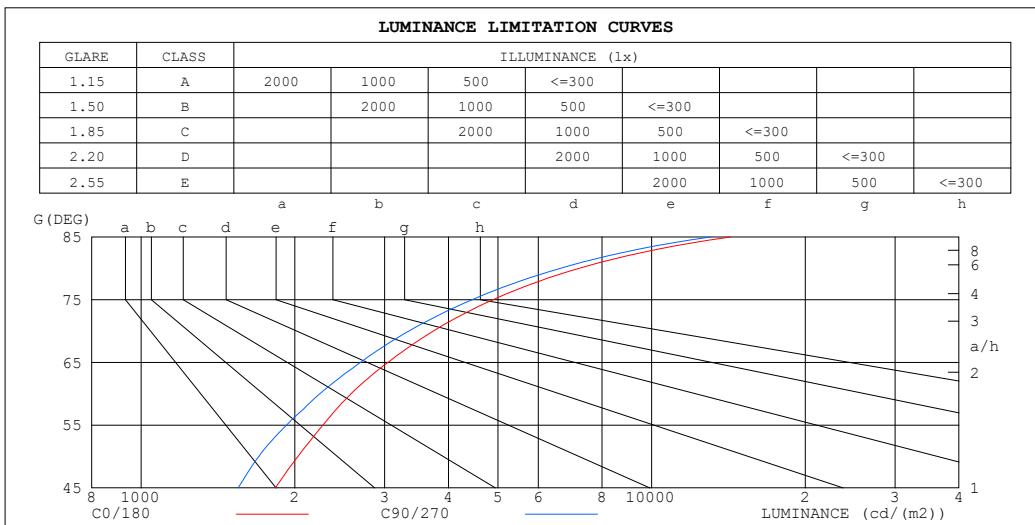
γ	C0	C45	C90	C135	C180	C225	C270	C315	γ	Φ zone	Φ total	%lum, lamp
10	234.4	245.3	225.6	228.8	174.8	150.7	178.4	155.3	0- 10	19.24	19.24	0.88,0.88
20	268.2	250.1	250.0	239.1	135.8	116.5	120.0	109.7	10- 20	53.54	72.77	3.33,3.33
30	323.3	303.2	294.8	290.8	109.8	130.9	101.9	111.2	20- 30	90.88	163.6	7.48,7.48
40	372.5	346.1	331.9	340.9	91.35	121.9	91.49	101.2	30- 40	137.6	301.2	13.8,13.8
50	380.8	337.2	319.2	338.7	67.54	81.65	73.64	75.53	40- 50	166.5	467.8	21.4,21.4
60	376.4	345.0	327.0	339.0	37.24	46.67	50.68	46.89	50- 60	177.0	644.7	29.5,29.5
70	373.2	356.1	334.1	348.8	18.48	22.52	30.63	26.37	60- 70	181.3	826.1	37.8,37.8
80	365.9	359.3	336.3	355.2	8.205	8.754	15.72	11.93	70- 80	180.4	1006	46,46
90	363.8	354.8	329.4	360.8	6.462	6.281	7.932	9.632	80- 90	176.4	1183	54.1,54.1
100	361.9	349.5	322.1	356.9	10.11	10.23	8.246	13.33	90-100	175.1	1358	62.1,62.1
110	359.4	341.1	310.8	348.3	20.44	21.15	13.35	23.23	100-110	173.6	1532	70,70
120	352.0	330.0	296.2	336.0	43.70	40.22	27.42	40.09	110-120	168.4	1700	77.7,77.7
130	341.8	321.6	294.5	326.4	78.46	62.91	51.32	61.27	120-130	160.9	1861	85,85
140	318.1	314.1	295.5	312.1	119.2	83.18	81.02	70.02	130-140	146.0	2007	91.7,91.7
150	230.3	220.2	222.1	224.1	101.7	63.57	73.50	54.99	140-150	109.7	2116	96.7,96.7
160	135.2	138.2	133.4	134.3	35.11	29.14	28.27	25.79	150-160	51.72	2168	99.1,99.1
170	57.25	50.05	55.71	46.94	7.753	20.06	3.374	18.44	160-170	18.19	2186	99.9,99.9
180	0	1.123	1.787	0	0	0.5114	1.338	0.3365	170-180	1.679	2188	100,100
DEG	LUMINOUS INTENSITY:cd									UNIT:lm		

C Range: 0 - 360DEG  
 C Interval: 15.0DEG  
 Test Speed: HIGH  
 Temperature:24.5°C  
 Operators:张丁泯  
 Test Date:2025-12-05

γ Range: 0 - 180DEG  
 γ Interval: 0.5DEG  
 Test System:EVERFINE GO-R5000\_V2 SYSTEM V2.00.463  
 Humidity:65.0%  
 Test Distance:30.000m [K=0.9305]  
 Remarks:

LUMINANCE LIMITATION CURVES

Test:U:120.10V I:1.8857A P:226.60W PF:0.9954 Freq:60.00Hz Lamp Flux:2188.05x1 lm		
NAME:	TYPE:	WEIGHT:
SPEC.:	DIM.:	SERIAL No.:
MFR.:	SUR.:	Shielding Angle:



LUMINANCE cd/(m2)		
G (DEG)	C0/180	C90/270
85	14288	13061
80	7214	6630
75	4894	4452
70	3735	3344
65	3045	2689
60	2577	2239
55	2270	1927
50	2028	1700
45	1832	1550

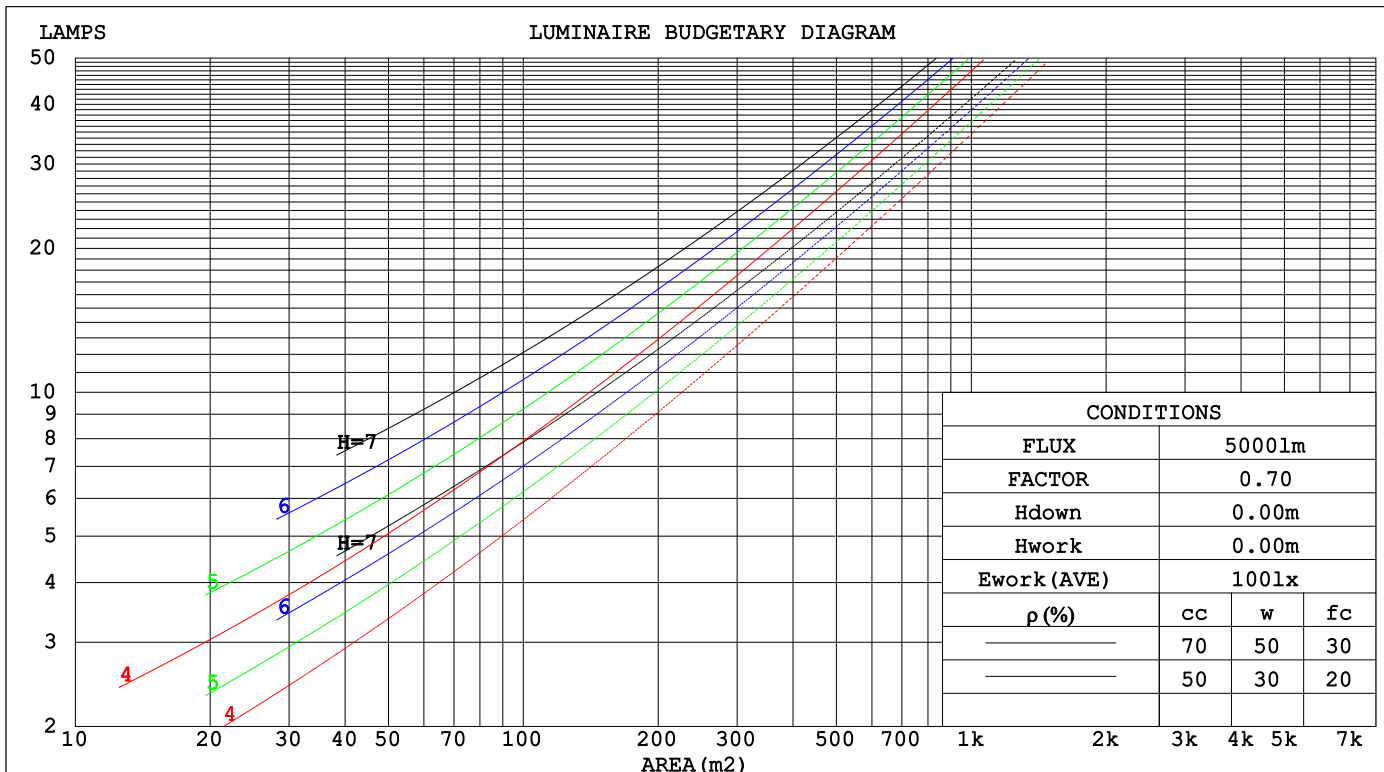
C Range: 0 - 360DEG  
 C Interval: 15.0DEG  
 Test Speed: HIGH  
 Temperature: 24.5°C  
 Operators: 张丁泯  
 Test Date: 2025-12-05

γ Range: 0 - 180DEG  
 γ Interval: 0.5DEG  
 Test System: EVERFINE GO-R5000\_V2 SYSTEM V2.00.463  
 Humidity: 65.0%  
 Test Distance: 30.000m [K=0.9305]  
 Remarks:

CU AND LUMINAIRE BUDGETARY ESTIMATE DIAGRAM

Test:U:120.10V I:1.8857A P:226.60W PF:0.9954 Freq:60.00Hz		
Lamp Flux:2188.05x1 lm		
NAME:	TYPE:	WEIGHT:
SPEC.:	DIM.:	SERIAL No.:
MFR.:	SUR.:	Shielding Angle:

pcc	80%			70%			50%			30%			10%			0
pw	50%	30%	10%	50%	30%	10%	50%	30%	10%	50%	30%	10%	50%	30%	10%	0
pfc	20%			20%			20%			20%			20%			0
RCR	RCR:Room Cavity Ratio						Coefficients of Utilization(CU)									
0.0	1.08	1.08	1.08	1.00	1.00	1.00	.86	.86	.86	.72	.72	.72	.60	.60	.60	.54
1.0	.89	.83	.79	.82	.77	.73	.69	.66	.62	.58	.55	.52	.47	.45	.43	.38
2.0	.75	.68	.61	.70	.63	.57	.59	.53	.49	.48	.44	.41	.39	.36	.33	.28
3.0	.65	.56	.49	.60	.52	.46	.50	.44	.39	.42	.37	.33	.33	.30	.27	.22
4.0	.57	.48	.41	.52	.44	.38	.44	.38	.32	.36	.31	.27	.29	.25	.22	.18
5.0	.50	.41	.34	.46	.38	.32	.39	.32	.27	.32	.27	.23	.26	.22	.18	.15
6.0	.45	.36	.29	.41	.33	.27	.35	.28	.23	.29	.24	.20	.23	.19	.16	.13
7.0	.40	.31	.25	.37	.29	.23	.31	.25	.20	.26	.21	.17	.21	.17	.14	.11
8.0	.36	.28	.22	.33	.26	.20	.28	.22	.18	.24	.19	.15	.19	.15	.12	.10
9.0	.33	.25	.19	.30	.23	.18	.26	.20	.15	.22	.17	.13	.18	.14	.11	.08
10.0	.30	.22	.17	.28	.21	.16	.24	.18	.14	.20	.15	.12	.16	.12	.10	.07



C Range: 0 - 360DEG  
 C Interval: 15.0DEG  
 Test Speed: HIGH  
 Temperature:24.5°C  
 Operators:张丁泯  
 Test Date:2025-12-05

γ Range: 0 - 180DEG  
 γ Interval: 0.5DEG  
 Test System:EVERFINE GO-R5000\_V2 SYSTEM V2.00.463  
 Humidity:65.0%  
 Test Distance:30.000m [K=0.9305]  
 Remarks:

WEC AND CCEC

Test:U:120.10V I:1.8857A P:226.60W PF:0.9954 Freq:60.00Hz								
Lamp Flux:2188.05x1 lm								
NAME:			TYPE:			WEIGHT:		
SPEC.:			DIM.:			SERIAL No.:		
MFR.:			SUR.:			Shielding Angle:		

ρ <sub>cc</sub>	80%			70%			50%			30%			10%			0
ρ <sub>w</sub>	50%	30%	10%	50%	30%	10%	50%	30%	10%	50%	30%	10%	50%	30%	10%	0
ρ <sub>fc</sub>	20%			20%			20%			20%			20%			0
RCR	RCR:Room Cavity Ratio						Wall Exitance Coefficients(WEC)									
0.0																
1.0	.388	.221	.070	.367	.209	.066	.327	.188	.060	.291	.168	.054	.257	.149	.048	
2.0	.329	.181	.055	.310	.171	.053	.274	.152	.047	.241	.135	.042	.210	.119	.037	
3.0	.290	.154	.046	.272	.146	.044	.239	.130	.039	.209	.114	.035	.180	.100	.031	
4.0	.260	.135	.040	.244	.128	.038	.213	.113	.034	.185	.100	.030	.159	.086	.026	
5.0	.236	.120	.035	.221	.113	.033	.193	.100	.030	.167	.088	.026	.143	.076	.023	
6.0	.215	.108	.031	.202	.102	.029	.176	.090	.026	.152	.079	.023	.130	.068	.020	
7.0	.198	.098	.028	.186	.093	.026	.162	.082	.024	.140	.072	.021	.119	.062	.018	
8.0	.184	.090	.025	.172	.085	.024	.150	.075	.021	.129	.066	.019	.110	.056	.016	
9.0	.171	.083	.023	.160	.078	.022	.140	.069	.020	.121	.060	.017	.102	.052	.015	
10.0	.160	.077	.021	.150	.072	.020	.131	.064	.018	.113	.056	.016	.096	.048	.014	

ρ <sub>cc</sub>	80%			70%			50%			30%			10%			0
ρ <sub>w</sub>	50%	30%	10%	50%	30%	10%	50%	30%	10%	50%	30%	10%	50%	30%	10%	0
ρ <sub>fc</sub>	20%			20%			20%			20%			20%			0
RCR	RCR:Room Cavity Ratio						Ceiling Cavity Exitance Coefficients(CCEC)									
0.0	.541	.541	.541	.462	.462	.462	.315	.315	.315	.181	.181	.181	.058	.058	.058	
1.0	.539	.508	.481	.461	.436	.414	.315	.300	.286	.181	.174	.167	.058	.056	.054	
2.0	.533	.487	.449	.456	.419	.388	.313	.290	.271	.180	.169	.159	.058	.055	.052	
3.0	.526	.472	.429	.451	.407	.372	.309	.283	.261	.179	.165	.154	.057	.054	.050	
4.0	.518	.460	.415	.445	.397	.361	.306	.277	.254	.177	.162	.150	.057	.053	.049	
5.0	.511	.451	.406	.439	.390	.354	.302	.272	.250	.175	.160	.148	.056	.052	.049	
6.0	.504	.443	.400	.433	.384	.348	.299	.269	.246	.173	.158	.146	.056	.052	.048	
7.0	.497	.437	.395	.428	.379	.344	.296	.266	.244	.172	.157	.145	.055	.051	.048	
8.0	.491	.432	.392	.423	.375	.341	.292	.263	.242	.170	.155	.144	.055	.051	.048	
9.0	.485	.428	.389	.418	.371	.339	.289	.261	.241	.169	.154	.144	.055	.051	.048	
10.0	.479	.424	.387	.413	.368	.337	.287	.259	.240	.167	.153	.143	.054	.050	.047	

C Range: 0 - 360DEG  
 C Interval: 15.0DEG  
 Test Speed: HIGH  
 Temperature:24.5°C  
 Operators:张丁泯  
 Test Date:2025-12-05

γ Range: 0 - 180DEG  
 γ Interval: 0.5DEG  
 Test System:EVERFINE GO-R5000\_V2 SYSTEM V2.00.463  
 Humidity:65.0%  
 Test Distance:30.000m [K=0.9305]  
 Remarks:

UGR(Unified Glare Rating) Table

Test:U:120.10V I:1.8857A P:226.60W PF:0.9954 Freq:60.00Hz										
Lamp Flux:2188.05x1 lm										
NAME:			TYPE:			WEIGHT:				
SPEC.:			DIM.:			SERIAL No.:				
MFR.:			SUR.:			Shielding Angle:				
ceiling/cavity	0.7	0.7	0.5	0.5	0.3	0.7	0.7	0.5	0.5	0.3
walls	0.5	0.3	0.5	0.3	0.3	0.5	0.3	0.5	0.3	0.3
working plane	0.2	0.2	0.2	0.2	0.2	0.2	0.2	0.2	0.2	0.2
Room dimensions	Viewed crosswise					Viewed endwise				
x = 2H y = 2H	14.8	15.9	15.6	16.8	17.8	13.9	15.0	14.8	15.9	17.0
3H	17.7	18.7	18.6	19.6	20.7	17.2	18.2	18.0	19.1	20.2
4H	19.4	20.3	20.3	21.2	22.4	19.0	20.0	19.9	20.9	22.0
6H	21.3	22.2	22.2	23.1	24.3	21.1	22.0	22.0	22.9	24.1
8H	22.5	23.3	23.3	24.2	25.4	22.3	23.1	23.2	24.1	25.2
12H	23.8	24.6	24.7	25.5	26.7	23.6	24.4	24.5	25.3	26.5
4H 2H	15.7	16.6	16.6	17.5	18.7	15.1	16.0	16.0	16.9	18.1
3H	18.9	19.7	19.8	20.6	21.8	18.4	19.2	19.2	20.1	21.3
4H	20.6	21.3	21.5	22.3	23.5	20.3	21.0	21.2	22.0	23.1
6H	22.5	23.2	23.4	24.1	25.3	22.5	23.1	23.4	24.1	25.3
8H	23.6	24.2	24.6	25.2	26.4	23.7	24.3	24.7	25.3	26.5
12H	25.0	25.6	26.0	26.6	27.8	25.1	25.7	26.1	26.7	27.9
8H 4H	21.4	22.0	22.3	22.9	24.2	21.1	21.7	22.0	22.7	23.9
6H	23.6	24.1	24.5	25.1	26.3	23.5	24.0	24.4	25.0	26.2
8H	24.8	25.3	25.8	26.3	27.6	24.9	25.3	25.8	26.3	27.6
12H	26.3	26.7	27.2	27.7	29.0	26.5	26.9	27.5	27.9	29.2
12H 4H	21.5	22.1	22.5	23.1	24.3	21.3	21.9	22.3	22.9	24.1
6H	23.9	24.4	24.9	25.4	26.7	23.8	24.3	24.8	25.3	26.6
8H	25.3	25.7	26.3	26.7	28.0	25.3	25.7	26.3	26.7	28.0
Variations with the observer position at spacings(CIE Pub.117):										
S = 1.0H	+ 0.1 / - 0.1					+ 0.1 / - 0.1				
1.5H	+ 0.2 / - 0.2					+ 0.2 / - 0.2				
2.0H	+ 0.3 / - 0.3					+ 0.3 / - 0.4				

CIE Pub.117, 2188 lm Total Lamp Luminous Flux Corrected (8log(F/F0) = 2.7)  
 Area: 0.2921 m2

C Range: 0 - 360DEG  
 C Interval: 15.0DEG  
 Test Speed: HIGH  
 Temperature:24.5°C  
 Operators:张丁浪  
 Test Date:2025-12-05

γ Range: 0 - 180DEG  
 γ Interval: 0.5DEG  
 Test System:EVERFINE GO-R5000\_V2 SYSTEM V2.00.463  
 Humidity:65.0%  
 Test Distance:30.000m [K=0.9305]  
 Remarks:

UTILIZATION FACTORS TABLE

Test:U:120.10V I:1.8857A P:226.60W PF:0.9954 Freq:60.00Hz		
Lamp Flux:2188.05x1 lm		
NAME:	TYPE:	WEIGHT:
SPEC.:	DIM.:	SERIAL No.:
MFR.:	SUR.:	Shielding Angle:

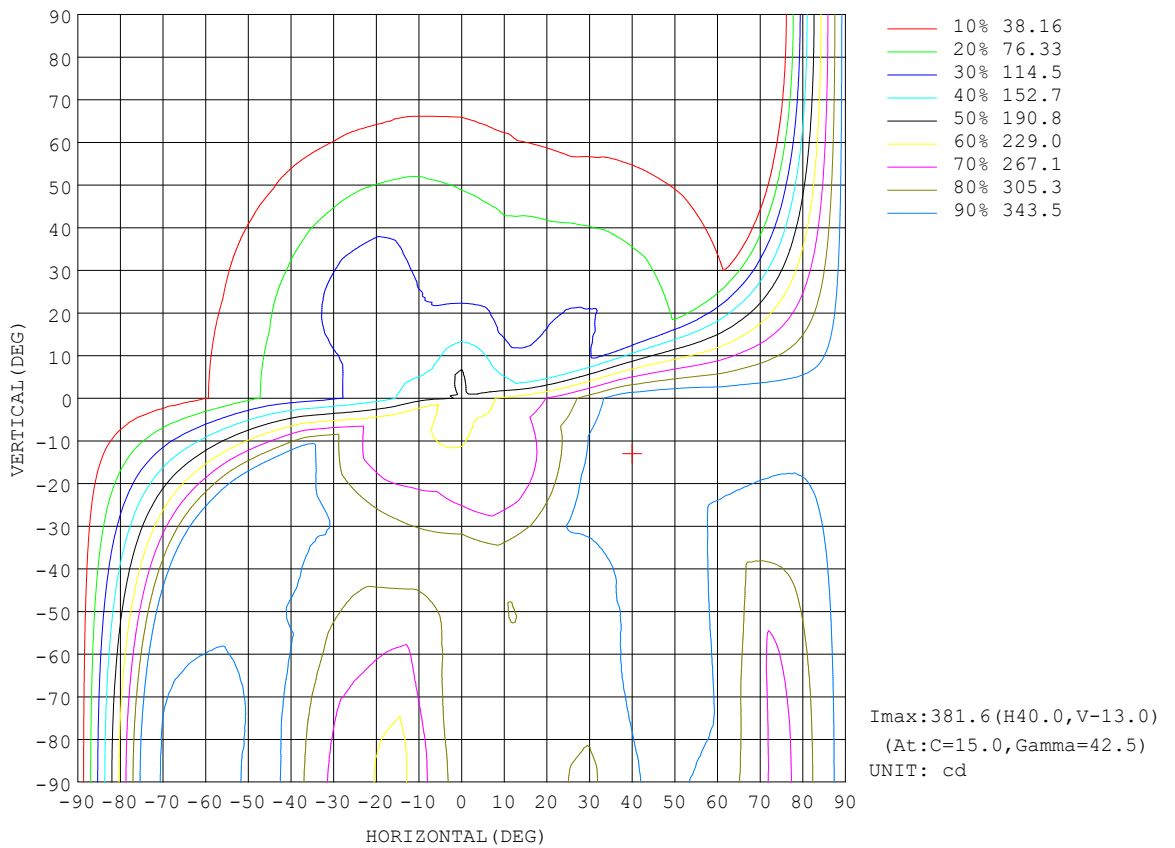
REFLECTANCE										
Ceiling	0.8	0.8	0.8	0.7	0.7	0.7	0.5	0.5	0.5	0
Walls	0.7	0.5	0.3	0.7	0.5	0.3	0.7	0.5	0.3	0
Working plane	0.2	0.2	0.2	0.2	0.2	0.2	0.2	0.2	0.2	0
ROOM INDEX	UTILIZATION FACTORS (PERCENT) k(RI) x RCR = 5									
k = 0.60	38	26	19	36	25	18	33	23	17	10
0.80	47	34	26	44	32	25	40	29	23	13
1.00	55	41	32	51	39	31	45	37	28	17
1.25	61	48	39	57	45	37	50	40	33	20
1.50	67	54	44	62	50	42	54	45	38	23
2.00	74	62	53	69	58	50	60	51	45	27
2.50	79	68	59	74	64	56	63	55	49	30
3.00	83	73	65	77	68	61	66	59	53	33
4.00	88	79	72	82	74	67	70	64	59	36
5.00	91	84	77	85	78	72	72	67	63	38
ROOM INDEX	UF(total)									Direct
According to DIN EN 13032-2 2004			Suspended				SHRNOM = 1.25			

C Range: 0 - 360DEG  
 C Interval: 15.0DEG  
 Test Speed: HIGH  
 Temperature:24.5°C  
 Operators:张丁浪  
 Test Date:2025-12-05

γ Range: 0 - 180DEG  
 γ Interval: 0.5DEG  
 Test System:EVERFINE GO-R5000\_V2 SYSTEM V2.00.463  
 Humidity:65.0%  
 Test Distance:30.000m [K=0.9305]  
 Remarks:

ISOCANDELA DIAGRAM

Test:U:120.10V I:1.8857A P:226.60W PF:0.9954 Freq:60.00Hz		
Lamp Flux:2188.05x1 lm		
NAME:	TYPE:	WEIGHT:
SPEC.:	DIM.:	SERIAL No.:
MFR.:	SUR.:	Shielding Angle:



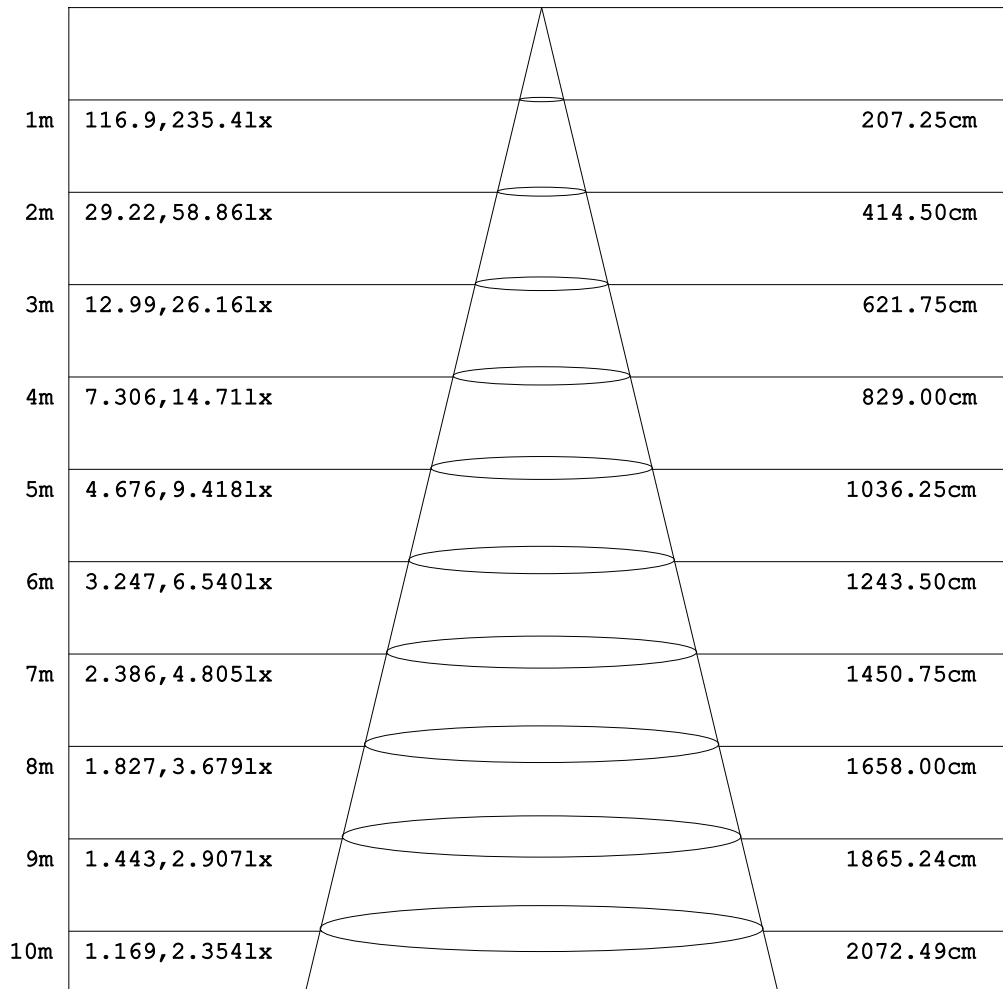
C Range: 0 - 360DEG  
 C Interval: 15.0DEG  
 Test Speed: HIGH  
 Temperature: 24.5°C  
 Operators: 张丁浪  
 Test Date: 2025-12-05

γ Range: 0 - 180DEG  
 γ Interval: 0.5DEG  
 Test System: EVERFINE GO-R5000\_V2 SYSTEM V2.00.463  
 Humidity: 65.0%  
 Test Distance: 30.000m [K=0.9305]  
 Remarks:

AAI Figure

Test:U:120.10V I:1.8857A P:226.60W PF:0.9954 Freq:60.00Hz Lamp Flux:2188.05x1 lm		
NAME:	TYPE:	WEIGHT:
SPEC.:	DIM.:	SERIAL No.:
MFR.:	SUR.:	Shielding Angle:

Flux out:407.8 lm



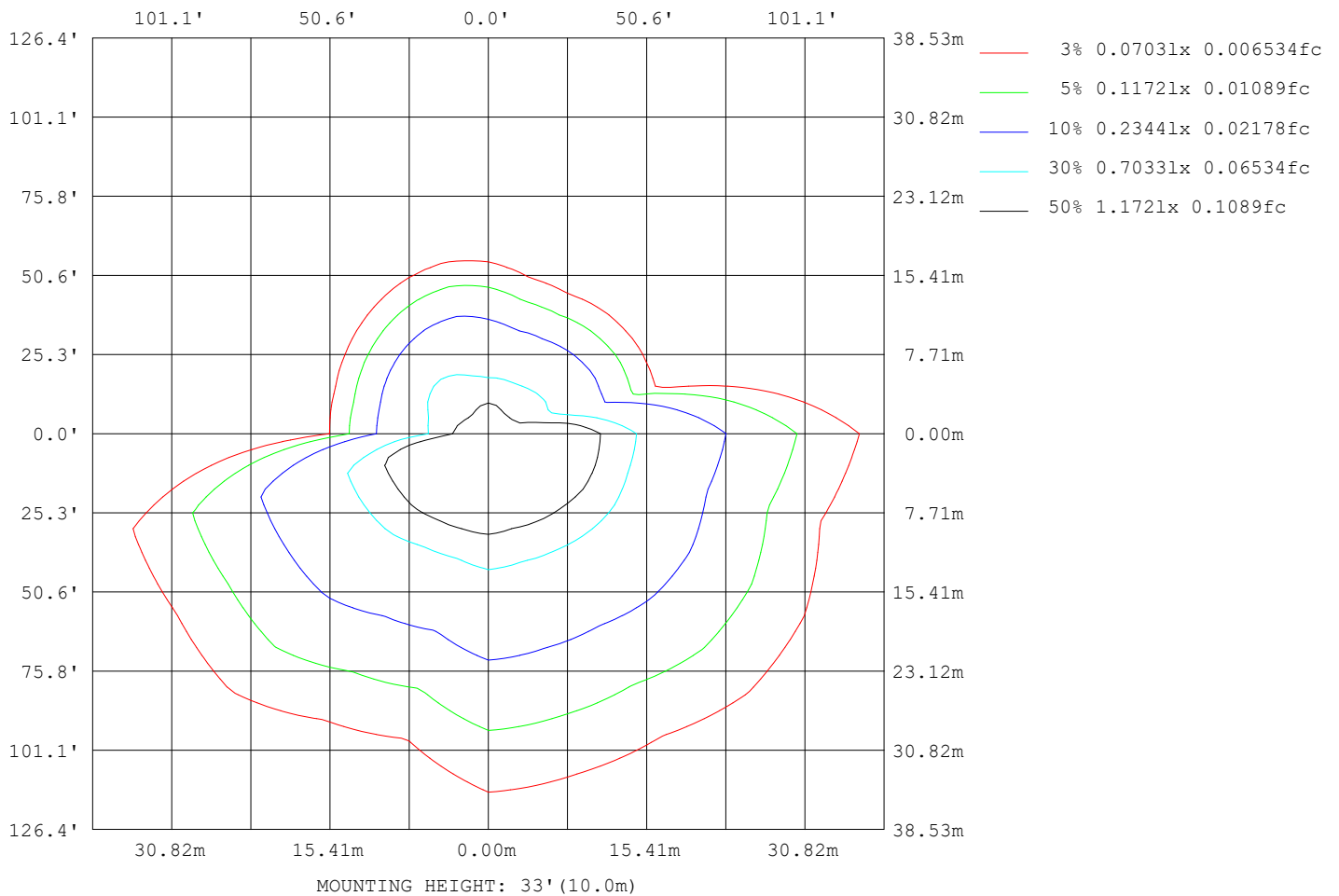
Note: The Curves indicate the illuminated area and the average illumination when the luminaire is at different distance.

C Range: 0 - 360DEG  
 C Interval: 15.0DEG  
 Test Speed: HIGH  
 Temperature: 24.5°C  
 Operators: 张丁浪  
 Test Date: 2025-12-05

γ Range: 0 - 180DEG  
 γ Interval: 0.5DEG  
 Test System: EVERFINE GO-R5000\_V2 SYSTEM V2.00.463  
 Humidity: 65.0%  
 Test Distance: 30.000m [K=0.9305]  
 Remarks:

ISOLUX DIAGRAM

Test:U:120.10V I:1.8857A P:226.60W PF:0.9954 Freq:60.00Hz Lamp Flux:2188.05x1 lm		
NAME:	TYPE:	WEIGHT:
SPEC.:	DIM.:	SERIAL No.:
MFR.:	SUR.:	Shielding Angle:



C Range: 0 - 360DEG  
 C Interval: 15.0DEG  
 Test Speed: HIGH  
 Temperature: 24.5°C  
 Operators: 张丁泯  
 Test Date: 2025-12-05

γ Range: 0 - 180DEG  
 γ Interval: 0.5DEG  
 Test System: EVERFINE GO-R5000\_V2 SYSTEM V2.00.463  
 Humidity: 65.0%  
 Test Distance: 30.000m [K=0.9305]  
 Remarks:

## LED Avg.L Report

Test:U:120.10V I:1.8857A P:226.60W PF:0.9954 Freq:60.00Hz Lamp Flux:2188.05x1 lm		
NAME:	TYPE:	WEIGHT:
SPEC.:	DIM.:	SERIAL No.:
MFR.:	SUR.:	Shielding Angle:

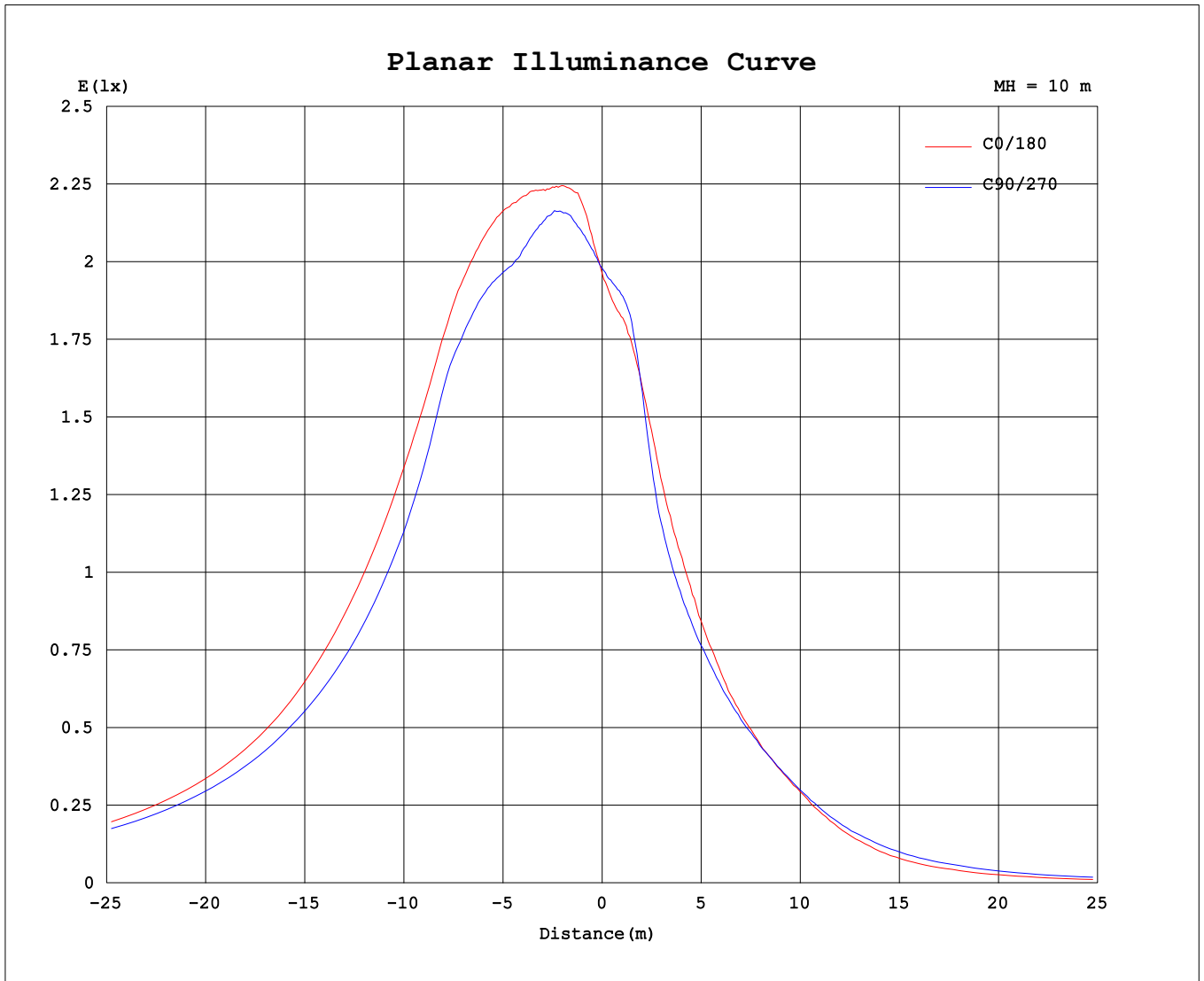
AvgL	cd/m2
L_0~180 (65) av	1631
L_0~180 (75) av	2527
L_0~180 (85) av	7279
L_90~270 (65) av	1507
L_90~270 (75) av	2377
L_90~270 (85) av	6741
L_45 (65) av	1546
L_45 (75) av	2458
L_45 (85) av	7195

Standard: GB/T 29293-2012

C Range: 0 - 360DEG  
C Interval: 15.0DEG  
Test Speed: HIGH  
Temperature:24.5°C  
Operators:张丁泯  
Test Date:2025-12-05

$\gamma$  Range: 0 - 180DEG  
 $\gamma$  Interval: 0.5DEG  
Test System:EVERFINE GO-R5000\_V2 SYSTEM V2.00.463  
Humidity:65.0%  
Test Distance:30.000m [K=0.9305]  
Remarks:

Planar Illuminance Curve



C Range: 0 - 360DEG  
C Interval: 15.0DEG  
Test Speed: HIGH  
Temperature: 24.5°C  
Operators: 张丁泯  
Test Date: 2025-12-05

γ Range: 0 - 180DEG  
γ Interval: 0.5DEG  
Test System: EVERFINE GO-R5000\_V2 SYSTEM V2.00.463  
Humidity: 65.0%  
Test Distance: 30.000m [K=0.9305]  
Remarks:

LUMINOUS DISTRIBUTION INTENSITY DATA

Test:U:120.10V I:1.8857A P:226.60W PF:0.9954 Freq:60.00Hz Lamp Flux:2188.05x1 lm		
NAME:	TYPE:	WEIGHT:
SPEC.:	DIM.:	SERIAL No.:
MFR.:	SUR.:	Shielding Angle:

Table--1

UNIT: cd

C (DEG) \ γ (DEG)	0	15	30	45	60	75	90	105	120	135	150	165	180	195	210	225	240	255	270
0	196	197	194	196	201	202	198	196	196	196	199	202	196	197	194	196	201	202	198
5	219	218	219	223	224	218	211	208	211	217	223	226	186	189	179	178	186	192	193
10	234	239	241	245	243	234	226	223	225	229	234	237	175	173	157	151	158	171	178
15	248	260	251	248	244	238	238	239	236	231	235	238	155	145	127	120	123	134	141
20	268	283	265	250	235	238	250	257	251	239	239	251	136	127	123	116	115	118	120
25	293	310	292	272	253	249	266	277	273	262	257	275	123	120	126	123	117	113	109
30	323	339	325	303	284	276	295	297	297	291	287	306	110	113	126	131	121	109	102
35	354	366	355	331	313	303	322	318	320	321	319	339	99.1	106	123	131	121	107	95.7
40	372	381	368	346	327	314	332	326	330	341	343	360	91.4	97.2	111	122	118	106	91.5
45	378	380	368	338	320	306	320	308	315	341	347	361	83.0	84.0	93.2	103	106	99.8	84.6
50	381	373	366	337	316	305	319	291	300	339	351	365	67.5	66.9	74.2	81.7	87.1	86.1	73.6
55	380	363	364	342	315	307	323	277	288	339	356	370	50.7	50.4	56.7	63.3	69.1	69.6	61.6
60	376	346	361	345	316	310	327	263	280	339	355	370	37.2	36.1	41.4	46.7	52.8	55.1	50.7
65	376	332	360	351	316	315	332	254	276	344	355	369	26.8	24.9	28.8	33.1	38.6	41.9	40.0
70	373	314	356	356	314	318	334	242	271	349	348	368	18.5	16.3	18.8	22.5	27.2	31.0	30.6
75	370	290	352	359	311	319	337	229	267	352	339	362	12.1	10.3	12.0	14.2	17.3	21.3	22.8
80	366	264	347	359	307	320	336	217	263	355	329	356	8.20	5.50	8.19	8.75	10.7	13.4	15.7
85	364	252	341	358	301	320	333	212	259	359	322	352	6.88	2.17	6.84	6.16	5.54	8.22	10.7
90	364	250	335	355	298	320	329	213	257	361	322	352	6.46	2.83	7.01	6.28	4.29	5.94	7.93
95	363	251	332	353	300	318	326	220	258	359	324	352	7.42	6.14	8.02	7.50	4.68	5.92	7.20
100	362	263	329	349	298	316	322	229	262	357	327	353	10.1	9.50	11.2	10.2	6.07	7.01	8.25
105	361	275	327	345	296	313	317	238	264	354	330	355	14.0	14.0	16.2	15.5	8.33	9.72	10.0
110	359	286	326	341	293	308	311	246	266	348	333	355	20.4	19.1	21.9	21.2	12.5	14.2	13.3
115	356	297	325	335	289	302	302	251	268	341	334	352	30.9	27.2	31.0	30.3	17.3	21.5	19.9
120	352	307	325	330	287	298	296	260	271	336	333	349	43.7	35.8	40.3	40.2	23.4	31.6	27.4
125	349	315	329	327	288	297	295	270	276	332	329	343	59.5	46.8	52.2	51.8	29.8	42.7	38.1
130	342	316	330	322	289	295	294	274	281	326	324	335	78.5	54.6	63.2	62.9	39.7	55.7	51.3
135	332	316	330	320	288	293	297	278	286	320	319	328	98.2	66.3	73.8	73.5	50.1	68.6	65.5
140	318	308	321	314	287	288	295	278	287	312	306	314	119	78.5	81.4	83.2	59.6	80.0	81.0
145	288	283	293	276	255	251	267	256	267	277	267	275	126	88.6	82.0	83.5	63.4	78.9	88.7
150	230	240	238	220	197	197	222	219	229	224	210	220	102	80.0	65.6	63.6	54.6	63.1	73.5
155	173	183	179	168	153	148	169	174	183	170	164	169	69.6	54.4	35.1	37.5	38.6	42.1	47.4
160	135	134	140	138	133	127	133	135	138	134	138	133	35.1	28.1	17.4	29.1	36.7	35.3	28.3
165	105	113	107	110	101	100	106	110	106	96.4	89.5	95.4	18.4	15.7	24.4	34.0	39.1	28.1	17.6
170	57.2	65.2	59.0	50.0	47.5	48.8	55.7	60.1	59.0	46.9	37.4	46.2	7.75	7.34	19.5	20.1	15.0	6.77	3.37
175	21.1	21.1	18.9	17.2	18.6	19.2	20.5	22.4	19.1	12.8	10.6	10.7	0.00	0.00	0.00	0.00	0.00	0.00	0.00
180	0.00	0.00	0.05	1.12	1.70	1.45	1.79	1.85	0.67	0.00	0.00	0.00	0.00	0.00	0.00	0.51	0.35	1.03	1.34

C Range: 0 - 360DEG  
 C Interval: 15.0DEG  
 Test Speed: HIGH  
 Temperature:24.5°C  
 Operators:张丁泯  
 Test Date:2025-12-05

γ Range: 0 - 180DEG  
 γ Interval: 0.5DEG  
 Test System:EVERFINE GO-R5000\_V2 SYSTEM V2.00.463  
 Humidity:65.0%  
 Test Distance:30.000m [K=0.9305]  
 Remarks:

LUMINOUS DISTRIBUTION INTENSITY DATA

Test:U:120.10V I:1.8857A P:226.60W PF:0.9954 Freq:60.00Hz Lamp Flux:2188.05x1 lm		
NAME:	TYPE:	WEIGHT:
SPEC.:	DIM.:	SERIAL No.:
MFR.:	SUR.:	Shielding Angle:

Table--2

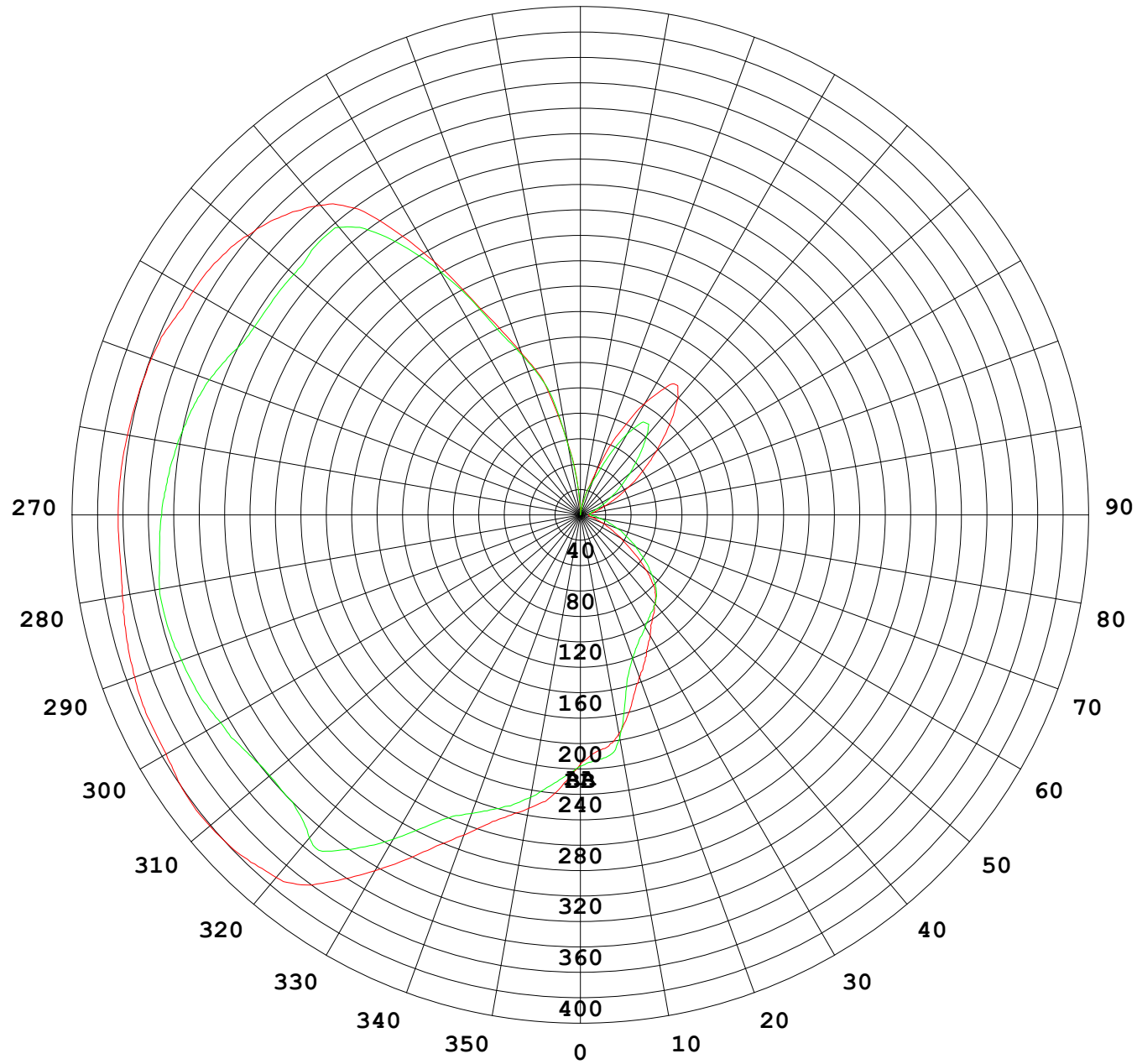
UNIT: cd

C (DEG) \ γ (DEG)	285	300	315	330	345														
0	196	196	196	199	202														
5	189	184	179	180	188														
10	174	163	155	157	169														
15	136	125	122	130	144														
20	118	110	110	120	131														
25	110	107	110	119	123														
30	102	104	111	118	117														
35	94.3	98.6	109	116	111														
40	86.0	90.1	101	111	105														
45	74.1	78.7	89.2	100	97.0														
50	62.0	64.3	75.5	84.5	83.2														
55	50.9	50.8	60.0	66.8	65.6														
60	40.6	39.0	46.9	51.6	51.6														
65	32.1	29.4	35.3	38.9	38.8														
70	25.2	21.2	26.4	28.5	29.2														
75	18.4	15.7	17.7	21.3	21.5														
80	12.8	11.2	11.9	14.0	16.1														
85	8.12	7.90	9.59	10.8	12.3														
90	4.97	6.06	9.63	10.1	11.9														
95	4.31	6.17	11.0	10.6	12.3														
100	7.50	8.01	13.3	12.7	14.0														
105	11.4	11.5	18.2	16.1	17.9														
110	15.1	17.0	23.2	22.4	22.7														
115	21.6	23.2	32.0	31.1	31.6														
120	28.7	31.7	40.1	41.5	41.6														
125	37.0	41.2	51.7	51.0	56.0														
130	42.4	50.9	61.3	67.2	70.3														
135	43.9	57.4	68.6	79.6	85.8														
140	59.1	60.6	70.0	84.4	98.0														
145	72.0	59.9	69.5	81.3	98.2														
150	70.5	56.4	55.0	60.5	72.7														
155	49.4	40.4	40.1	42.7	50.7														
160	23.0	19.3	25.8	41.0	47.1														
165	14.6	23.9	31.0	37.9	31.3														
170	6.61	13.3	18.4	18.4	13.6														
175	0.00	2.66	5.01	3.47	1.42														
180	1.82	1.67	0.34	0.00	0.00														

C Range: 0 - 360DEG  
 C Interval: 15.0DEG  
 Test Speed: HIGH  
 Temperature:24.5°C  
 Operators:张丁泯  
 Test Date:2025-12-05

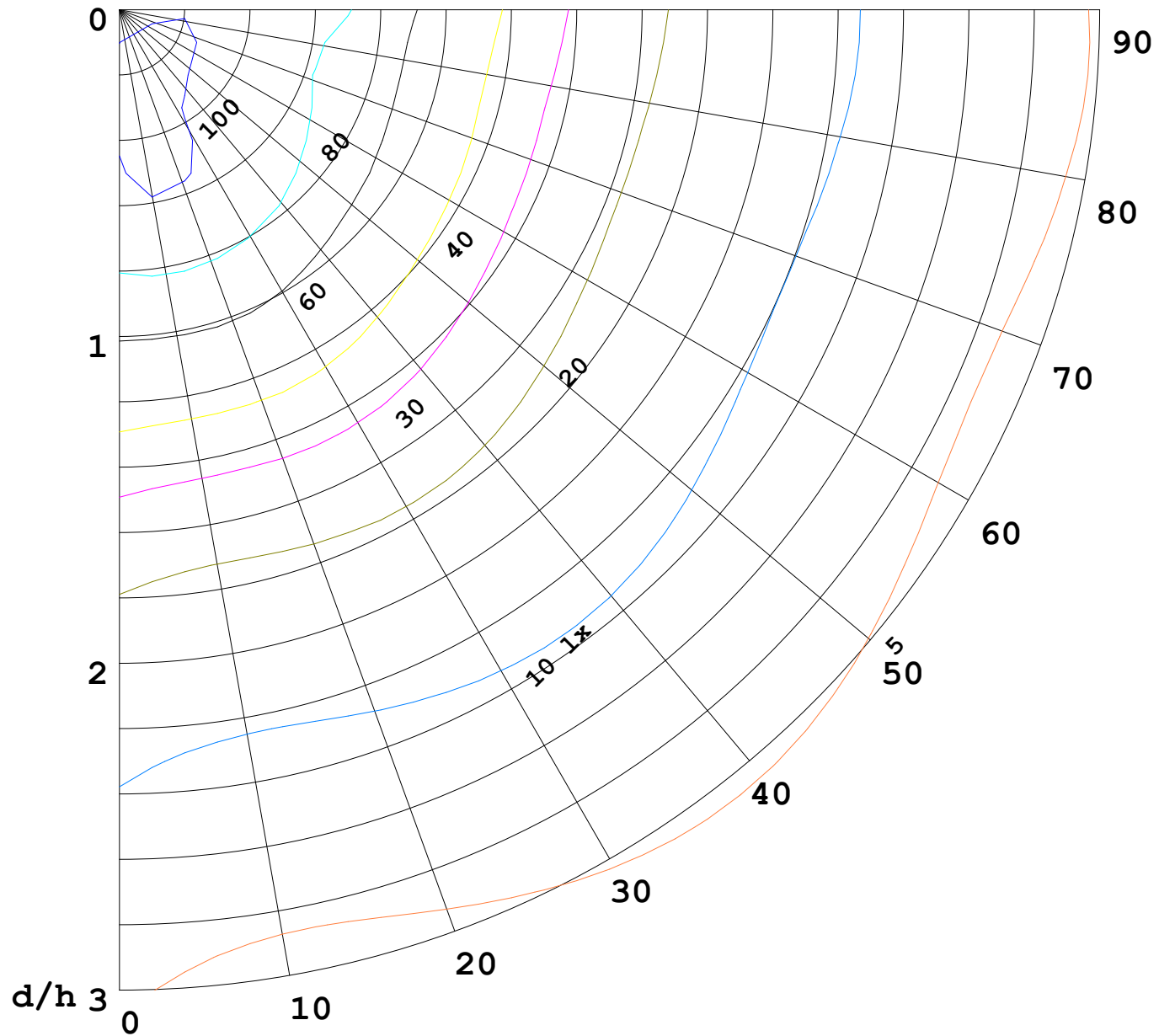
γ Range: 0 - 180DEG  
 γ Interval: 0.5DEG  
 Test System:EVERFINE GO-R5000\_V2 SYSTEM V2.00.463  
 Humidity:65.0%  
 Test Distance:30.000m [K=0.9305]  
 Remarks:

I (cd)



1000 lm

$K = 1$



F = 5000 lm  
 K = 0.7  
 Hcc = 0.0 m  
 Hfc = 0.0 m  
 Eave = 100 lx

—————	Pcc	Pw	Pfc
—————	70	50	30
—————	50	30	20

