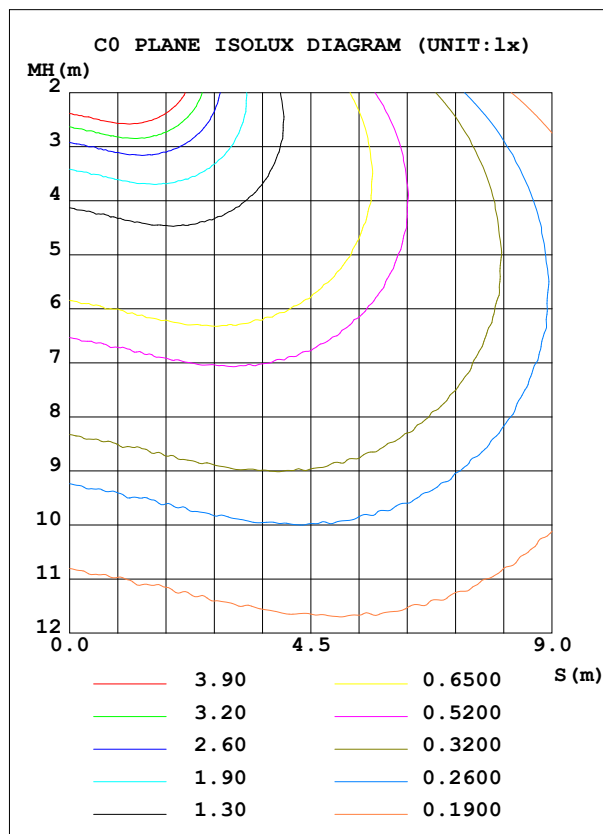
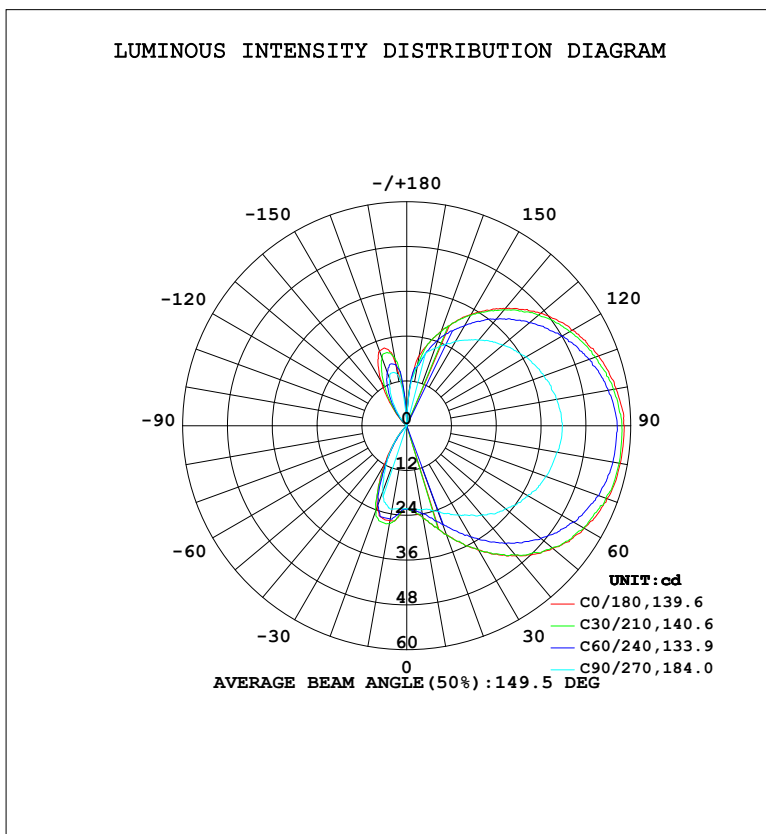


LUMINAIRE PHOTOMETRIC TEST REPORT

Test:U:120.39V I:0.2152A P:25.771W PF:0.9949 Freq:60.01Hz Lamp Flux:291.408x1 lm		
NAME:	TYPE:	WEIGHT:
SPEC.:	DIM.:	SERIAL No.:
MFR.:	SUR.:	Shielding Angle:

DATA OF LAMP		PHOTOMETRIC DATA			
MODEL	HF7122-AB-WHT	Imax (cd)	58.26	S/MH (C0/180)	0.91
NOMINAL POWER (W)		LOR (%)	100.0	S/MH (C90/270)	0.88
RATED VOLTAGE (V)	120	TOTAL FLUX (lm)	291.41	$\eta$ UP, DN (C0-180)	45.5, 47.8
NOMINAL FLUX (lm)	291.408	CIE CLASS	DIFFUSE	$\eta$ UP, DN (C180-360)	2.9, 3.8
LAMPS INSIDE	1	$\eta$ up (%)	48.3	CIBSE SHR NOM	1.00
TEST VOLTAGE (V)	120.211	$\eta$ down (%)	51.7	CIBSE SHR MAX	1.15



C Range: 0 - 360DEG  
 C Interval: 15.0DEG  
 Test Speed: HIGH  
 Temperature: 24.5°C  
 Operators: Dingmin Zhang  
 Test Date: 2025-12-05

$\gamma$  Range: 0 - 180DEG  
 $\gamma$  Interval: 0.5DEG  
 Test System: EVERFINE GO-R5000\_V2 SYSTEM V2.00.463  
 Humidity: 65.0%  
 Test Distance: 30.000m [K=0.9305]  
 Remarks:

ZONAL FLUX DIAGRAM

ZONAL FLUX DIAGRAM:

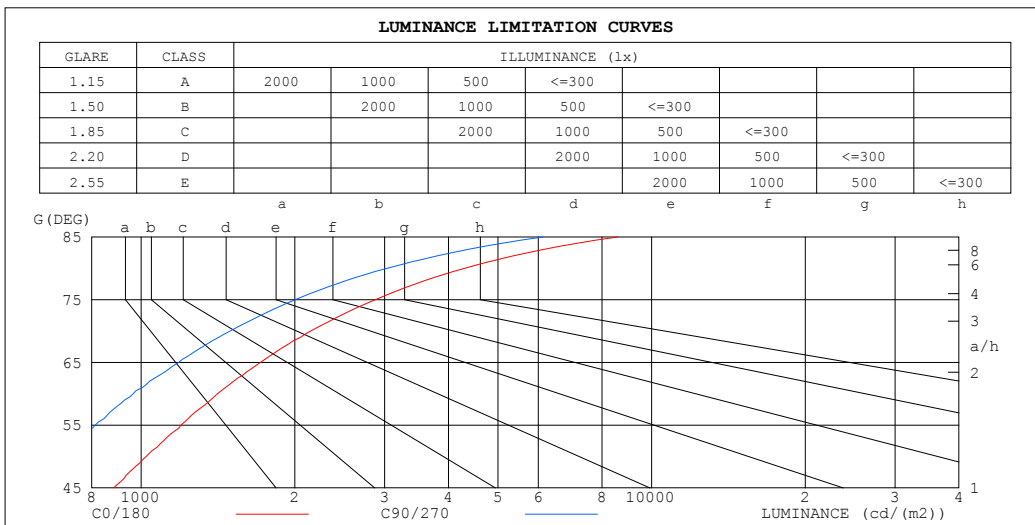
$\gamma$	C0	C45	C90	C135	C180	C225	C270	C315	$\gamma$	$\Phi$ zone	$\Phi$ total	%lum, lamp
10	25.18	24.28	22.86	24.36	25.82	26.22	22.68	22.96	0- 10	2.248	2.248	0.77,0.77
20	31.05	29.82	24.44	27.46	23.25	23.28	18.84	19.68	10- 20	7.034	9.282	3.19,3.19
30	38.63	36.66	27.63	31.15	12.13	10.37	10.29	13.31	20- 30	10.91	20.19	6.93,6.93
40	45.51	43.78	31.31	36.16	3.998	2.512	3.879	6.209	30- 40	13.75	33.93	11.6,11.6
50	51.13	49.65	34.65	40.52	0	0	0	1.087	40- 50	16.81	50.74	17.4,17.4
60	54.83	54.24	37.50	44.36	0	0	0	0	50- 60	20.63	71.37	24.5,24.5
70	57.09	56.80	39.72	46.96	0	0	0	0	60- 70	24.30	95.67	32.8,32.8
80	58.07	58.25	40.94	48.53	0	0	0	0	70- 80	26.84	122.5	42,42
90	58.26	58.05	41.68	49.23	0	0	0	0	80- 90	28.05	150.6	51.7,51.7
100	57.01	57.26	40.76	48.55	0	0	0	0	90-100	27.89	178.4	61.2,61.2
110	54.74	55.00	39.10	46.36	0	0	0	0	100-110	26.22	204.7	70.2,70.2
120	51.17	51.56	36.91	43.20	0	0	0	0	110-120	23.30	228.0	78.2,78.2
130	46.82	46.12	33.65	39.26	0.2519	0	0	0	120-130	19.44	247.4	84.9,84.9
140	40.95	39.83	30.00	34.41	4.776	3.340	2.344	2.350	130-140	15.45	262.9	90.2,90.2
150	34.49	32.81	26.12	29.04	13.51	10.55	7.611	8.529	140-150	12.42	275.3	94.5,94.5
160	26.98	25.86	22.18	23.77	21.31	17.41	13.47	15.73	150-160	9.532	284.8	97.7,97.7
170	19.01	16.58	16.15	16.07	16.37	17.34	13.81	15.05	160-170	5.488	290.3	99.6,99.6
180	0	0	1.667	2.039	0	0	1.004	2.428	170-180	1.108	291.4	100,100
DEG	LUMINOUS INTENSITY:cd									UNIT:lm		

C Range: 0 - 360DEG  
 C Interval: 15.0DEG  
 Test Speed: HIGH  
 Temperature:24.5°C  
 Operators:Dingmin Zhang  
 Test Date:2025-12-05

$\gamma$  Range: 0 - 180DEG  
 $\gamma$  Interval: 0.5DEG  
 Test System:EVERFINE GO-R5000\_V2 SYSTEM V2.00.463  
 Humidity:65.0%  
 Test Distance:30.000m [K=0.9305]  
 Remarks:

LUMINANCE LIMITATION CURVES

Test:U:120.39V I:0.2152A P:25.771W PF:0.9949 Freq:60.01Hz Lamp Flux:291.408x1 lm		
NAME:	TYPE:	WEIGHT:
SPEC.:	DIM.:	SERIAL No.:
MFR.:	SUR.:	Shielding Angle:



LUMINANCE cd/(m2)		
G (DEG)	C0/180	C90/270
85	8586	6132
80	4301	3032
75	2876	2005
70	2147	1494
65	1713	1185
60	1410	965
55	1198	813
50	1023	693
45	884	608

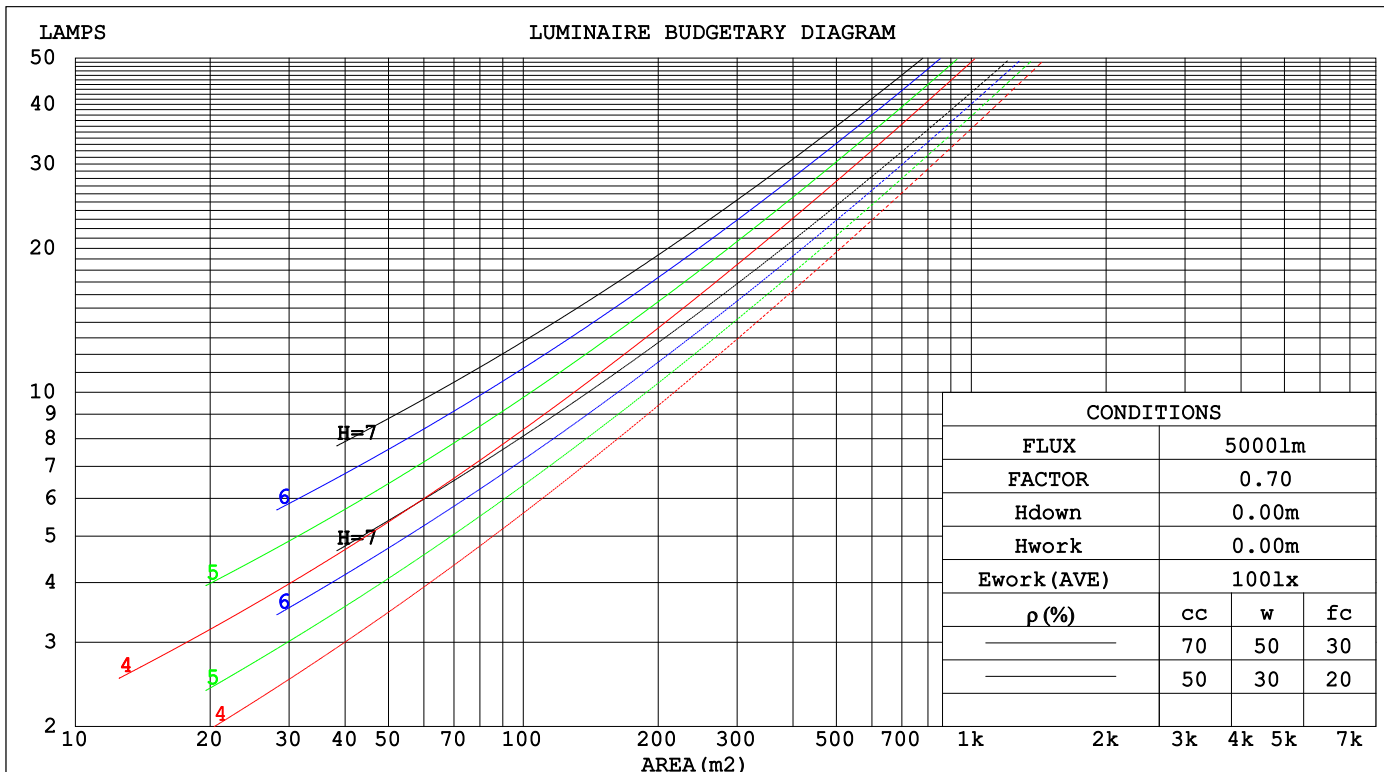
C Range: 0 - 360DEG  
 C Interval: 15.0DEG  
 Test Speed: HIGH  
 Temperature: 24.5°C  
 Operators: Dingmin Zhang  
 Test Date: 2025-12-05

γ Range: 0 - 180DEG  
 γ Interval: 0.5DEG  
 Test System: EVERFINE GO-R5000\_V2 SYSTEM V2.00.463  
 Humidity: 65.0%  
 Test Distance: 30.000m [K=0.9305]  
 Remarks:

CU AND LUMINAIRE BUDGETARY ESTIMATE DIAGRAM

Test:U:120.39V I:0.2152A P:25.771W PF:0.9949 Freq:60.01Hz		
Lamp Flux:291.408x1 lm		
NAME:	TYPE:	WEIGHT:
SPEC.:	DIM.:	SERIAL No.:
MFR.:	SUR.:	Shielding Angle:

pcc	80%			70%			50%			30%			10%			0
pw	50%	30%	10%	50%	30%	10%	50%	30%	10%	50%	30%	10%	50%	30%	10%	0
pfc	20%			20%			20%			20%			20%			0
RCR	RCR:Room Cavity Ratio						Coefficients of Utilization(CU)									
0.0	1.08	1.08	1.08	.99	.99	.99	.84	.84	.84	.70	.70	.70	.58	.58	.58	.52
1.0	.87	.81	.76	.80	.75	.71	.67	.63	.59	.55	.52	.49	.44	.41	.39	.34
2.0	.74	.66	.59	.68	.60	.54	.56	.51	.46	.46	.41	.38	.36	.33	.30	.25
3.0	.63	.54	.47	.58	.50	.44	.48	.42	.37	.39	.34	.30	.31	.27	.24	.19
4.0	.55	.46	.39	.51	.42	.36	.42	.35	.30	.34	.29	.25	.27	.23	.19	.16
5.0	.49	.39	.33	.45	.36	.30	.37	.31	.25	.30	.25	.21	.24	.20	.16	.13
6.0	.43	.34	.28	.40	.32	.26	.33	.27	.22	.27	.22	.18	.21	.17	.14	.11
7.0	.39	.30	.24	.36	.28	.22	.30	.24	.19	.24	.19	.15	.19	.15	.12	.09
8.0	.35	.27	.21	.32	.25	.19	.27	.21	.16	.22	.17	.14	.18	.14	.11	.08
9.0	.32	.24	.18	.30	.22	.17	.25	.19	.15	.20	.16	.12	.16	.12	.10	.07
10.0	.29	.22	.16	.27	.20	.15	.23	.17	.13	.19	.14	.11	.15	.11	.09	.06



C Range: 0 - 360DEG  
 C Interval: 15.0DEG  
 Test Speed: HIGH  
 Temperature:24.5°C  
 Operators:Dingmin Zhang  
 Test Date:2025-12-05

γ Range: 0 - 180DEG  
 γ Interval: 0.5DEG  
 Test System:EVERFINE GO-R5000\_V2 SYSTEM V2.00.463  
 Humidity:65.0%  
 Test Distance:30.000m [K=0.9305]  
 Remarks:

WEC AND CCEC

Test:U:120.39V I:0.2152A P:25.771W PF:0.9949 Freq:60.01Hz									
Lamp Flux:291.408x1 lm									
NAME:			TYPE:			WEIGHT:			
SPEC.:			DIM.:			SERIAL No.:			
MFR.:			SUR.:			Shielding Angle:			

$\rho_{cc}$	80%			70%			50%			30%			10%			0
$\rho_w$	50%	30%	10%	50%	30%	10%	50%	30%	10%	50%	30%	10%	50%	30%	10%	0
$\rho_{fc}$	20%			20%			20%			20%			20%			0
RCR	RCR:Room Cavity Ratio						Wall Exitance Coefficients(WEC)									
0.0																
1.0	.409	.232	.074	.387	.221	.070	.346	.198	.063	.308	.178	.057	.273	.158	.051	
2.0	.341	.187	.057	.321	.177	.054	.283	.157	.049	.248	.139	.044	.216	.122	.039	
3.0	.297	.158	.047	.279	.149	.045	.244	.132	.040	.213	.116	.036	.183	.101	.031	
4.0	.264	.137	.040	.247	.130	.038	.216	.115	.034	.187	.100	.030	.160	.087	.026	
5.0	.238	.121	.035	.223	.114	.033	.194	.101	.030	.167	.088	.026	.142	.076	.023	
6.0	.217	.109	.031	.203	.103	.030	.176	.090	.026	.151	.079	.023	.128	.067	.020	
7.0	.200	.099	.028	.187	.093	.026	.162	.082	.024	.139	.071	.021	.117	.061	.018	
8.0	.184	.090	.025	.172	.085	.024	.150	.075	.021	.128	.065	.019	.108	.055	.016	
9.0	.172	.083	.023	.160	.078	.022	.139	.069	.019	.119	.060	.017	.100	.051	.015	
10.0	.160	.077	.021	.150	.072	.020	.130	.064	.018	.111	.055	.016	.093	.047	.013	

$\rho_{cc}$	80%			70%			50%			30%			10%			0
$\rho_w$	50%	30%	10%	50%	30%	10%	50%	30%	10%	50%	30%	10%	50%	30%	10%	0
$\rho_{fc}$	20%			20%			20%			20%			20%			0
RCR	RCR:Room Cavity Ratio						Ceiling Cavity Exitance Coefficients(CCEC)									
0.0	.559	.559	.559	.478	.478	.478	.326	.326	.326	.187	.187	.187	.060	.060	.060	
1.0	.558	.527	.498	.478	.452	.428	.327	.311	.296	.188	.180	.172	.060	.058	.056	
2.0	.553	.505	.466	.473	.435	.403	.324	.301	.281	.187	.175	.165	.060	.057	.054	
3.0	.545	.490	.446	.468	.423	.387	.321	.294	.271	.185	.172	.160	.060	.056	.052	
4.0	.538	.479	.434	.462	.414	.377	.317	.288	.265	.184	.169	.157	.059	.055	.052	
5.0	.531	.470	.425	.456	.406	.370	.314	.284	.261	.182	.167	.155	.059	.054	.051	
6.0	.523	.462	.419	.450	.400	.364	.310	.280	.258	.180	.165	.153	.058	.054	.051	
7.0	.517	.456	.414	.444	.395	.361	.307	.277	.256	.178	.163	.152	.058	.053	.050	
8.0	.510	.451	.410	.439	.391	.358	.304	.275	.254	.177	.162	.151	.057	.053	.050	
9.0	.504	.447	.408	.434	.388	.356	.301	.272	.253	.175	.161	.151	.057	.053	.050	
10.0	.498	.443	.406	.430	.384	.354	.298	.270	.251	.174	.160	.150	.056	.053	.050	

C Range: 0 - 360DEG  
 C Interval: 15.0DEG  
 Test Speed: HIGH  
 Temperature:24.5°C  
 Operators:Dingmin Zhang  
 Test Date:2025-12-05

$\gamma$  Range: 0 - 180DEG  
 $\gamma$  Interval: 0.5DEG  
 Test System:EVERFINE GO-R5000\_V2 SYSTEM V2.00.463  
 Humidity:65.0%  
 Test Distance:30.000m [K=0.9305]  
 Remarks:

UGR(Unified Glare Rating) Table

Test:U:120.39V I:0.2152A P:25.771W PF:0.9949 Freq:60.01Hz										
Lamp Flux:291.408x1 lm										
NAME:			TYPE:			WEIGHT:				
SPEC.:			DIM.:			SERIAL No.:				
MFR.:			SUR.:			Shielding Angle:				
ceiling/cavity	0.7	0.7	0.5	0.5	0.3	0.7	0.7	0.5	0.5	0.3
walls	0.5	0.3	0.5	0.3	0.3	0.5	0.3	0.5	0.3	0.3
working plane	0.2	0.2	0.2	0.2	0.2	0.2	0.2	0.2	0.2	0.2
Room dimensions	Viewed crosswise					Viewed endwise				
x = 2H y = 2H	13.2	14.3	14.0	15.1	16.3	11.9	13.0	12.8	13.9	15.0
3H	16.6	17.6	17.4	18.5	19.6	15.1	16.1	16.0	17.0	18.2
4H	18.5	19.4	19.3	20.3	21.5	16.9	17.8	17.8	18.7	19.9
6H	20.6	21.4	21.5	22.4	23.6	18.8	19.7	19.7	20.6	21.8
8H	21.7	22.6	22.6	23.5	24.7	19.9	20.7	20.8	21.7	22.9
12H	23.0	23.9	24.0	24.8	26.0	21.1	21.9	22.0	22.9	24.1
4H 2H	14.2	15.1	15.1	16.0	17.2	13.4	14.4	14.3	15.3	16.5
3H	17.7	18.5	18.6	19.5	20.7	16.8	17.6	17.7	18.5	19.7
4H	19.7	20.5	20.7	21.4	22.7	18.6	19.4	19.6	20.3	21.6
6H	21.9	22.6	22.9	23.6	24.8	20.7	21.3	21.6	22.3	23.6
8H	23.2	23.8	24.2	24.8	26.1	21.8	22.4	22.7	23.4	24.6
12H	24.6	25.2	25.6	26.2	27.5	23.0	23.6	24.0	24.6	25.9
8H 4H	20.4	21.1	21.4	22.0	23.3	19.7	20.3	20.6	21.3	22.5
6H	22.9	23.5	23.9	24.5	25.8	22.0	22.5	23.0	23.5	24.8
8H	24.4	24.8	25.4	25.8	27.2	23.3	23.8	24.3	24.8	26.1
12H	26.0	26.4	27.0	27.4	28.8	24.8	25.2	25.8	26.2	27.6
12H 4H	20.6	21.2	21.6	22.2	23.5	19.9	20.5	20.9	21.5	22.8
6H	23.3	23.7	24.2	24.7	26.1	22.5	22.9	23.5	23.9	25.3
8H	24.8	25.2	25.8	26.2	27.6	23.9	24.3	24.9	25.4	26.7
Variations with the observer position at spacings(CIE Pub.117):										
S = 1.0H	+ 0.1 / - 0.1					+ 0.1 / - 0.1				
1.5H	+ 0.2 / - 0.3					+ 0.2 / - 0.3				
2.0H	+ 0.3 / - 0.4					+ 0.3 / - 0.5				

CIE Pub.117, 291.4 lm Total Lamp Luminous Flux Corrected (8log(F/F0) = -4.3)  
 Area: 0.07775 m2

C Range: 0 - 360DEG	γ Range: 0 - 180DEG
C Interval: 15.0DEG	γ Interval: 0.5DEG
Test Speed: HIGH	Test System:EVERFINE GO-R5000_V2 SYSTEM V2.00.463
Temperature:24.5°C	Humidity:65.0%
Operators:Dingmin Zhang	Test Distance:30.000m [K=0.9305]
Test Date:2025-12-05	Remarks:

UTILIZATION FACTORS TABLE

Test:U:120.39V I:0.2152A P:25.771W PF:0.9949 Freq:60.01Hz Lamp Flux:291.408x1 lm		
NAME:	TYPE:	WEIGHT:
SPEC.:	DIM.:	SERIAL No.:
MFR.:	SUR.:	Shielding Angle:

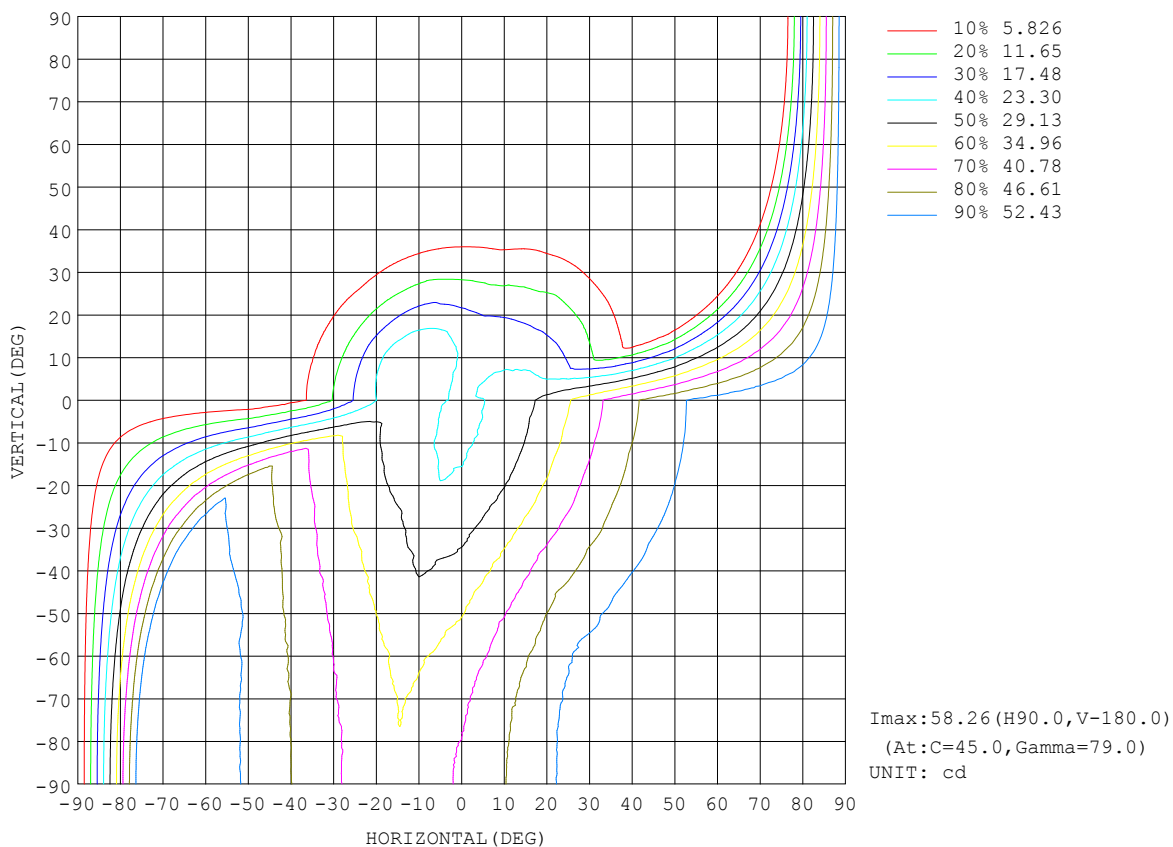
REFLECTANCE										
Ceiling	0.8	0.8	0.8	0.7	0.7	0.7	0.5	0.5	0.5	0
Walls	0.7	0.5	0.3	0.7	0.5	0.3	0.7	0.5	0.3	0
Working plane	0.2	0.2	0.2	0.2	0.2	0.2	0.2	0.2	0.2	0
ROOM INDEX	UTILIZATION FACTORS (PERCENT) k(RI) x RCR = 5									
k = 0.60	37	25	18	35	24	17	32	22	16	8
0.80	46	32	24	43	30	23	38	27	21	11
1.00	53	39	30	49	37	28	43	34	26	14
1.25	59	45	36	55	43	34	48	38	31	17
1.50	65	51	41	60	48	39	52	42	35	19
2.00	72	59	50	67	56	47	57	48	41	23
2.50	77	65	56	71	61	53	61	53	46	26
3.00	81	70	62	75	65	58	64	56	50	29
4.00	86	77	69	80	72	65	68	61	56	32
5.00	90	82	75	83	76	69	70	65	60	35
ROOM INDEX	UF(total)									Direct
According to DIN EN 13032-2 2004			Suspended				SHRNOM = 1.25			

C Range: 0 - 360DEG  
 C Interval: 15.0DEG  
 Test Speed: HIGH  
 Temperature:24.5°C  
 Operators:Dingmin Zhang  
 Test Date:2025-12-05

γ Range: 0 - 180DEG  
 γ Interval: 0.5DEG  
 Test System:EVERFINE GO-R5000\_V2 SYSTEM V2.00.463  
 Humidity:65.0%  
 Test Distance:30.000m [K=0.9305]  
 Remarks:

ISOCANDELA DIAGRAM

Test:U:120.39V I:0.2152A P:25.771W PF:0.9949 Freq:60.01Hz Lamp Flux:291.408x1 lm		
NAME:	TYPE:	WEIGHT:
SPEC.:	DIM.:	SERIAL No.:
MFR.:	SUR.:	Shielding Angle:



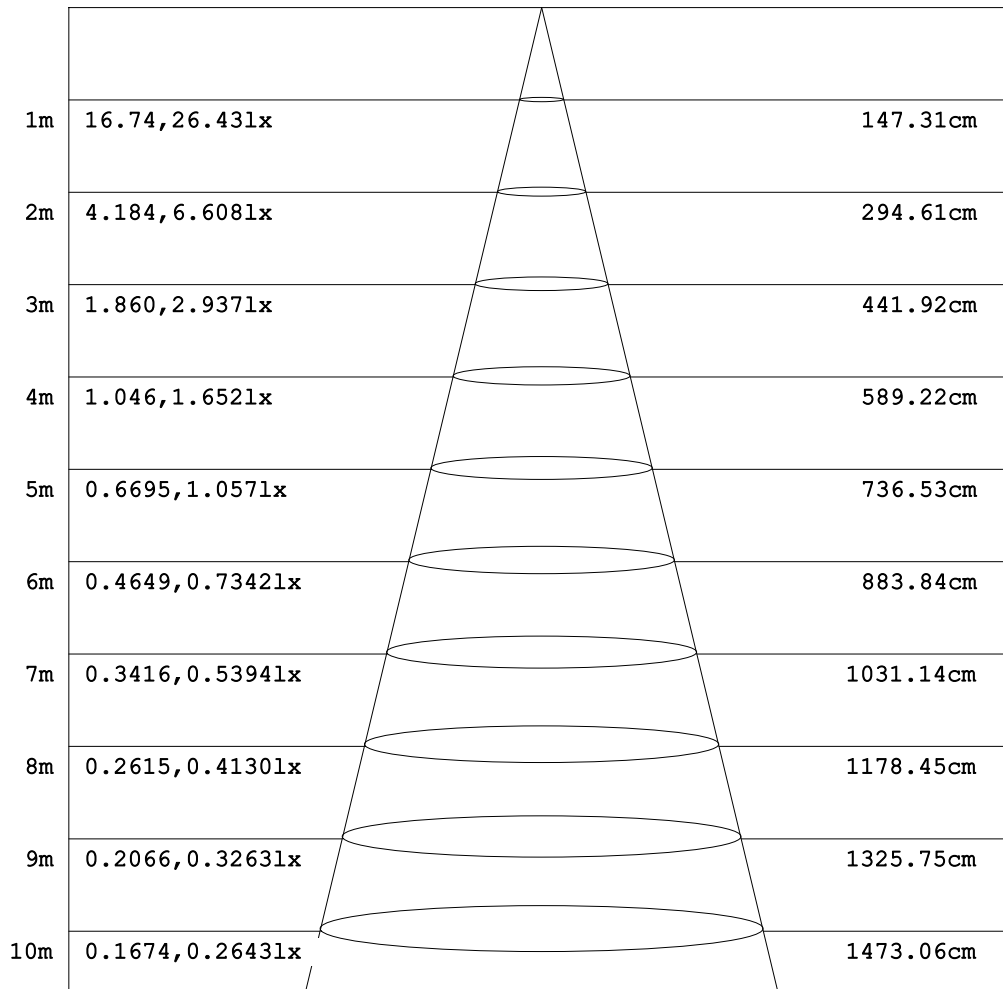
C Range: 0 - 360DEG  
C Interval: 15.0DEG  
Test Speed: HIGH  
Temperature:24.5°C  
Operators:Dingmin Zhang  
Test Date:2025-12-05

γ Range: 0 - 180DEG  
γ Interval: 0.5DEG  
Test System:EVERFINE GO-R5000\_V2 SYSTEM V2.00.463  
Humidity:65.0%  
Test Distance:30.000m [K=0.9305]  
Remarks:

**AAI Figure**

Test:U:120.39V I:0.2152A P:25.771W PF:0.9949 Freq:60.01Hz Lamp Flux:291.408x1 lm		
NAME:	TYPE:	WEIGHT:
SPEC.:	DIM.:	SERIAL No.:
MFR.:	SUR.:	Shielding Angle:

Flux out:28.79 lm



Height                      Eavg, Emax                      Angle:72.75deg                      Diameter

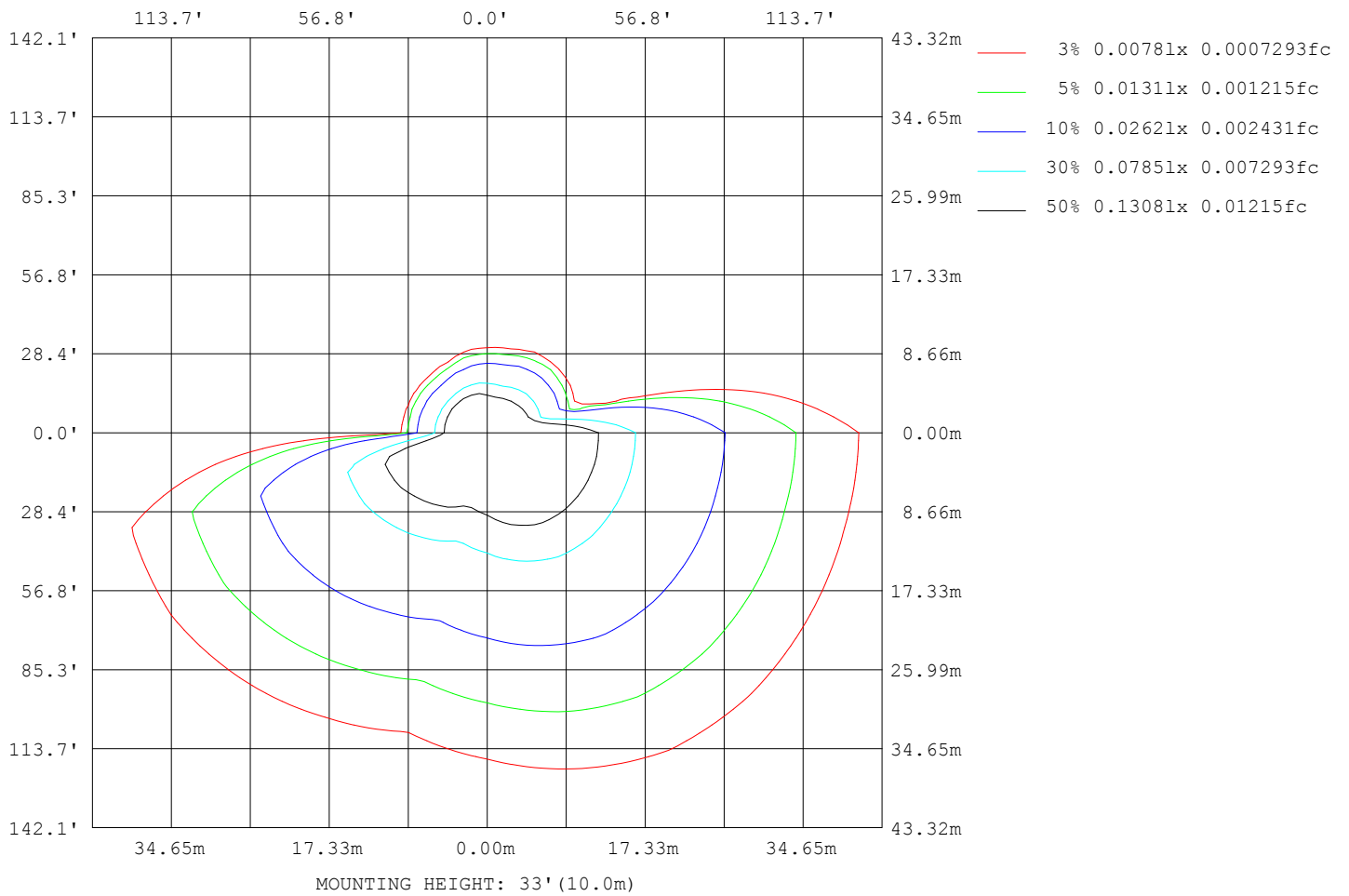
**Note:**The Curves indicate the illuminated area and the average illumination when the luminaire is at different distance.

C Range: 0 - 360DEG  
C Interval: 15.0DEG  
Test Speed: HIGH  
Temperature:24.5°C  
Operators:Dingmin Zhang  
Test Date:2025-12-05

γ Range: 0 - 180DEG  
γ Interval: 0.5DEG  
Test System:EVERFINE GO-R5000\_V2 SYSTEM V2.00.463  
Humidity:65.0%  
Test Distance:30.000m [K=0.9305]  
Remarks:

ISOLUX DIAGRAM

Test:U:120.39V I:0.2152A P:25.771W PF:0.9949 Freq:60.01Hz Lamp Flux:291.408x1 lm		
NAME:	TYPE:	WEIGHT:
SPEC.:	DIM.:	SERIAL No.:
MFR.:	SUR.:	Shielding Angle:



C Range: 0 - 360DEG  
 C Interval: 15.0DEG  
 Test Speed: HIGH  
 Temperature:24.5°C  
 Operators:Dingmin Zhang  
 Test Date:2025-12-05

γ Range: 0 - 180DEG  
 γ Interval: 0.5DEG  
 Test System:EVERFINE GO-R5000\_V2 SYSTEM V2.00.463  
 Humidity:65.0%  
 Test Distance:30.000m [K=0.9305]  
 Remarks:

## LED Avg.L Report

Test:U:120.39V I:0.2152A P:25.771W PF:0.9949 Freq:60.01Hz Lamp Flux:291.408x1 lm		
NAME:	TYPE:	WEIGHT:
SPEC.:	DIM.:	SERIAL No.:
MFR.:	SUR.:	Shielding Angle:

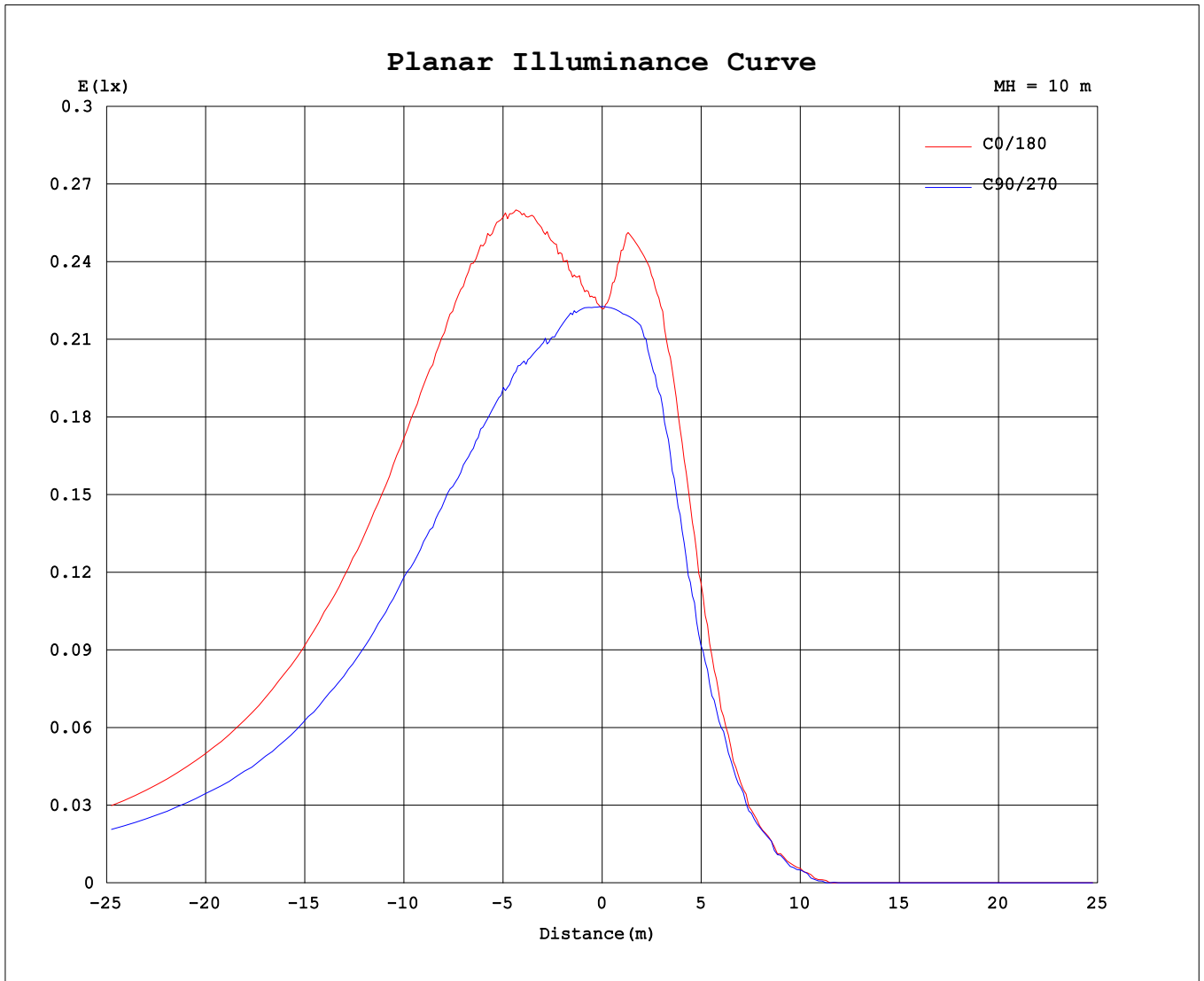
AvgL	cd/m2
L_0~180 (65) av	856
L_0~180 (75) av	1438
L_0~180 (85) av	4293
L_90~270 (65) av	592
L_90~270 (75) av	1002
L_90~270 (85) av	3066
L_45 (65) av	772
L_45 (75) av	1313
L_45 (85) av	3952

Standard: GB/T 29293-2012

C Range: 0 - 360DEG  
C Interval: 15.0DEG  
Test Speed: HIGH  
Temperature:24.5°C  
Operators:Dingmin Zhang  
Test Date:2025-12-05

γ Range: 0 - 180DEG  
γ Interval: 0.5DEG  
Test System:EVERFINE GO-R5000\_V2 SYSTEM V2.00.463  
Humidity:65.0%  
Test Distance:30.000m [K=0.9305]  
Remarks:

Planar Illuminance Curve



C Range: 0 - 360DEG  
C Interval: 15.0DEG  
Test Speed: HIGH  
Temperature: 24.5°C  
Operators: Dingmin Zhang  
Test Date: 2025-12-05

γ Range: 0 - 180DEG  
γ Interval: 0.5DEG  
Test System: EVERFINE GO-R5000\_V2 SYSTEM V2.00.463  
Humidity: 65.0%  
Test Distance: 30.000m [K=0.9305]  
Remarks:

LUMINOUS DISTRIBUTION INTENSITY DATA

Test:U:120.39V I:0.2152A P:25.771W PF:0.9949 Freq:60.01Hz Lamp Flux:291.408x1 lm		
NAME:	TYPE:	WEIGHT:
SPEC.:	DIM.:	SERIAL No.:
MFR.:	SUR.:	Shielding Angle:

Table--1

UNIT: cd

C (DEG) \ γ (DEG)	0	15	30	45	60	75	90	105	120	135	150	165	180	195	210	225	240	255	270
0	22.2	22.3	22.3	22.2	22.3	22.2	22.3	22.3	22.4	22.4	22.5	22.4	22.2	22.3	22.3	22.2	22.3	22.2	22.3
5	23.1	23.1	23.2	23.0	22.9	22.4	22.5	22.3	22.4	22.5	22.9	23.3	24.3	24.5	24.2	23.9	23.5	22.8	22.3
10	25.2	25.3	25.3	24.3	23.9	23.2	22.9	22.4	22.6	24.4	25.4	25.7	25.8	26.4	26.7	26.2	25.4	24.4	22.7
15	27.7	28.0	27.9	26.8	25.5	24.3	23.2	22.8	24.0	26.4	26.7	26.9	25.5	26.5	26.6	26.3	25.4	24.1	21.8
20	31.0	31.6	31.0	29.8	28.1	26.3	24.4	23.4	25.8	27.5	28.0	29.4	23.3	24.1	24.3	23.3	22.7	20.8	18.8
25	34.7	35.2	34.7	33.4	31.1	28.7	25.9	24.5	27.2	28.9	30.7	32.6	18.1	17.9	17.7	16.8	16.3	15.7	14.6
30	38.6	38.8	38.3	36.7	34.4	31.1	27.6	25.8	29.4	31.2	34.0	35.8	12.1	11.4	10.6	10.4	10.6	10.6	10.3
35	41.9	42.8	41.9	40.2	37.8	33.9	29.4	27.0	31.0	33.6	37.2	39.1	7.01	6.63	6.52	5.63	6.02	6.37	6.70
40	45.5	46.0	45.3	43.8	41.3	36.4	31.3	28.3	32.6	36.2	40.1	42.6	4.00	3.53	3.09	2.51	2.77	3.37	3.88
45	48.6	49.1	48.0	46.9	44.1	38.9	33.4	29.7	34.0	38.7	43.2	45.5	1.58	1.34	1.17	0.75	0.51	1.09	1.42
50	51.1	51.4	50.9	49.6	46.9	41.0	34.7	30.8	35.7	40.5	45.9	48.5	0.00	0.08	0.00	0.00	0.00	0.00	0.00
55	53.4	53.5	53.2	52.2	49.5	43.1	36.2	32.1	37.0	42.7	48.5	50.9	0.00	0.00	0.00	0.00	0.00	0.00	0.00
60	54.8	54.8	54.7	54.2	51.6	44.6	37.5	33.2	38.2	44.4	50.6	53.1	0.00	0.00	0.00	0.00	0.00	0.00	0.00
65	56.3	55.8	55.5	55.7	53.2	46.2	38.9	33.7	39.3	45.8	52.5	54.8	0.00	0.00	0.00	0.00	0.00	0.00	0.00
70	57.1	56.5	56.8	56.8	54.7	47.3	39.7	34.5	40.1	47.0	53.8	55.8	0.00	0.00	0.00	0.00	0.00	0.00	0.00
75	57.9	57.1	57.5	57.7	55.5	48.1	40.3	34.9	40.7	48.0	55.2	56.6	0.00	0.00	0.00	0.00	0.00	0.00	0.00
80	58.1	57.3	57.7	58.3	56.1	48.5	40.9	35.3	41.4	48.5	55.7	57.2	0.00	0.00	0.00	0.00	0.00	0.00	0.00
85	58.2	57.3	57.7	58.1	56.2	48.7	41.6	35.3	41.5	49.0	56.1	57.6	0.00	0.00	0.00	0.00	0.00	0.00	0.00
90	58.3	56.7	57.6	58.0	56.4	48.8	41.7	35.5	41.5	49.2	56.1	57.6	0.00	0.00	0.00	0.00	0.00	0.00	0.00
95	57.8	56.4	57.0	57.9	55.8	48.5	41.4	35.5	41.7	49.2	55.8	57.5	0.00	0.00	0.00	0.00	0.00	0.00	0.00
100	57.0	55.4	56.2	57.3	54.8	47.8	40.8	35.3	40.9	48.5	54.9	57.1	0.00	0.00	0.00	0.00	0.00	0.00	0.00
105	56.0	54.7	55.2	56.4	53.6	46.8	40.1	34.8	40.3	47.5	53.7	56.2	0.00	0.00	0.00	0.00	0.00	0.00	0.00
110	54.7	53.2	53.7	55.0	52.1	45.6	39.1	34.2	39.4	46.4	52.2	55.2	0.00	0.00	0.00	0.00	0.00	0.00	0.00
115	53.0	51.7	52.3	53.6	50.2	43.9	38.1	33.4	38.3	44.9	50.6	53.5	0.00	0.00	0.00	0.00	0.00	0.00	0.00
120	51.2	50.0	50.4	51.6	48.0	42.3	36.9	32.5	36.8	43.2	48.5	51.7	0.00	0.00	0.00	0.00	0.00	0.00	0.00
125	49.3	48.2	48.5	49.0	45.6	40.6	35.2	31.6	35.4	41.3	46.2	49.1	0.00	0.00	0.00	0.00	0.00	0.00	0.00
130	46.8	45.9	46.1	46.1	42.9	38.5	33.7	30.2	34.0	39.3	43.7	46.5	0.25	0.08	0.00	0.00	0.00	0.00	0.00
135	44.1	43.4	43.5	42.9	40.3	36.2	32.0	29.0	32.1	36.9	40.8	43.7	2.19	1.92	1.35	1.09	0.92	0.59	0.33
140	41.0	40.6	40.5	39.8	37.3	33.9	30.0	28.0	30.3	34.4	38.2	40.5	4.78	4.61	3.86	3.34	3.09	2.51	2.34
145	37.8	37.6	37.3	36.3	34.1	31.0	28.0	26.2	28.2	31.6	35.2	37.3	8.64	8.04	7.53	6.19	5.94	5.18	4.44
150	34.5	34.2	34.1	32.8	31.0	28.5	26.1	24.7	26.4	29.0	31.9	33.8	13.5	12.6	11.6	10.6	9.21	8.12	7.61
155	30.7	30.9	30.6	29.4	28.0	25.8	24.0	23.2	24.4	26.4	28.5	30.0	18.2	17.7	15.8	14.3	12.6	11.0	10.6
160	27.0	27.3	26.9	25.9	24.4	23.3	22.2	21.6	22.6	23.8	25.3	26.5	21.3	21.1	19.4	17.4	15.3	14.1	13.5
165	22.9	23.1	22.9	22.2	20.4	20.0	20.3	19.9	21.1	21.2	20.9	22.3	21.4	21.3	20.3	18.7	17.1	15.1	14.7
170	19.0	16.9	16.5	16.6	16.2	16.4	16.2	16.1	16.2	16.1	16.1	15.3	16.4	17.0	18.3	17.3	16.5	15.1	13.8
175	11.1	11.6	11.6	11.2	11.3	10.6	10.1	9.62	9.36	9.38	9.66	9.78	8.62	9.12	8.57	9.67	10.4	8.78	5.09
180	0.00	0.00	0.00	0.00	0.06	0.81	1.67	2.59	2.30	2.04	1.34	0.00	0.00	0.00	0.00	0.00	0.00	0.08	1.00

C Range: 0 - 360DEG

C Interval: 15.0DEG

Test Speed: HIGH

Temperature:24.5°C

Operators:Dingmin Zhang

Test Date:2025-12-05

γ Range: 0 - 180DEG

γ Interval: 0.5DEG

Test System:EVERFINE GO-R5000\_V2 SYSTEM V2.00.463

Humidity:65.0%

Test Distance:30.000m [K=0.9305]

Remarks:

LUMINOUS DISTRIBUTION INTENSITY DATA

Test:U:120.39V I:0.2152A P:25.771W PF:0.9949 Freq:60.01Hz Lamp Flux:291.408x1 lm		
NAME:	TYPE:	WEIGHT:
SPEC.:	DIM.:	SERIAL No.:
MFR.:	SUR.:	Shielding Angle:

Table--2

UNIT: cd

C (DEG) \ γ (DEG)	285	300	315	330	345														
0	22.3	22.4	22.4	22.5	22.4														
5	22.3	22.8	23.1	23.6	23.7														
10	21.8	22.7	23.0	23.6	24.8														
15	20.7	21.4	22.0	23.1	24.5														
20	17.7	18.5	19.7	21.3	22.9														
25	13.6	15.2	16.6	18.0	18.9														
30	10.1	11.7	13.3	14.1	13.9														
35	6.86	8.04	9.73	9.80	9.20														
40	4.02	5.19	6.21	6.44	5.27														
45	1.43	2.51	3.27	3.01	2.28														
50	0.00	0.26	1.09	0.91	0.25														
55	0.00	0.00	0.00	0.00	0.00														
60	0.00	0.00	0.00	0.00	0.00														
65	0.00	0.00	0.00	0.00	0.00														
70	0.00	0.00	0.00	0.00	0.00														
75	0.00	0.00	0.00	0.00	0.00														
80	0.00	0.00	0.00	0.00	0.00														
85	0.00	0.00	0.00	0.00	0.00														
90	0.00	0.00	0.00	0.00	0.00														
95	0.00	0.00	0.00	0.00	0.00														
100	0.00	0.00	0.00	0.00	0.00														
105	0.00	0.00	0.00	0.00	0.00														
110	0.00	0.00	0.00	0.00	0.00														
115	0.00	0.00	0.00	0.00	0.00														
120	0.00	0.00	0.00	0.00	0.00														
125	0.00	0.00	0.00	0.00	0.00														
130	0.00	0.00	0.00	0.00	0.00														
135	0.08	0.42	0.50	0.83	1.42														
140	1.75	2.01	2.35	2.93	3.44														
145	3.85	4.44	5.02	5.95	6.70														
150	6.95	7.63	8.53	9.87	10.9														
155	10.3	11.3	12.6	14.2	15.8														
160	13.2	14.1	15.7	17.8	18.6														
165	14.7	15.4	16.6	17.4	18.8														
170	10.5	12.6	15.1	16.0	17.2														
175	4.35	6.69	9.46	10.6	10.7														
180	1.93	2.51	2.43	2.01	0.92														

C Range: 0 - 360DEG  
 C Interval: 15.0DEG  
 Test Speed: HIGH  
 Temperature:24.5°C  
 Operators:Dingmin Zhang  
 Test Date:2025-12-05

γ Range: 0 - 180DEG  
 γ Interval: 0.5DEG  
 Test System:EVERFINE GO-R5000\_V2 SYSTEM V2.00.463  
 Humidity:65.0%  
 Test Distance:30.000m [K=0.9305]  
 Remarks: