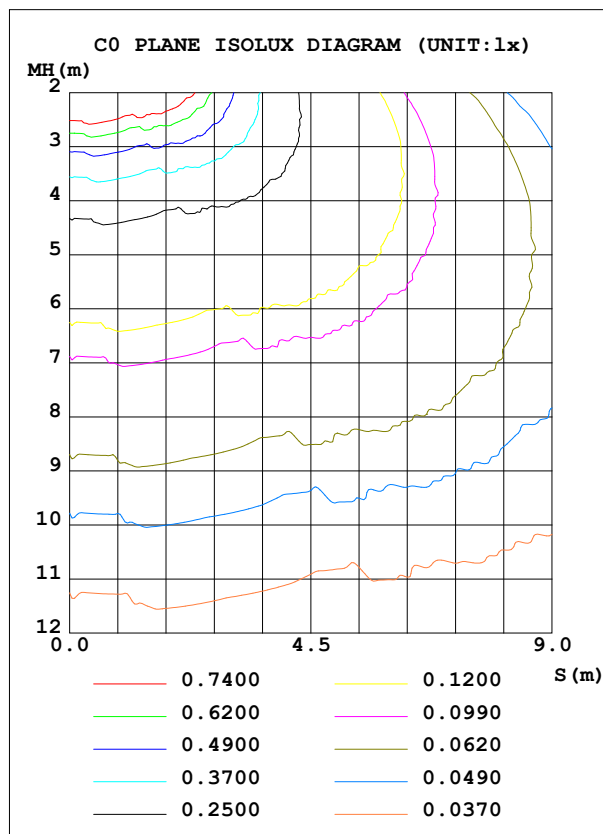
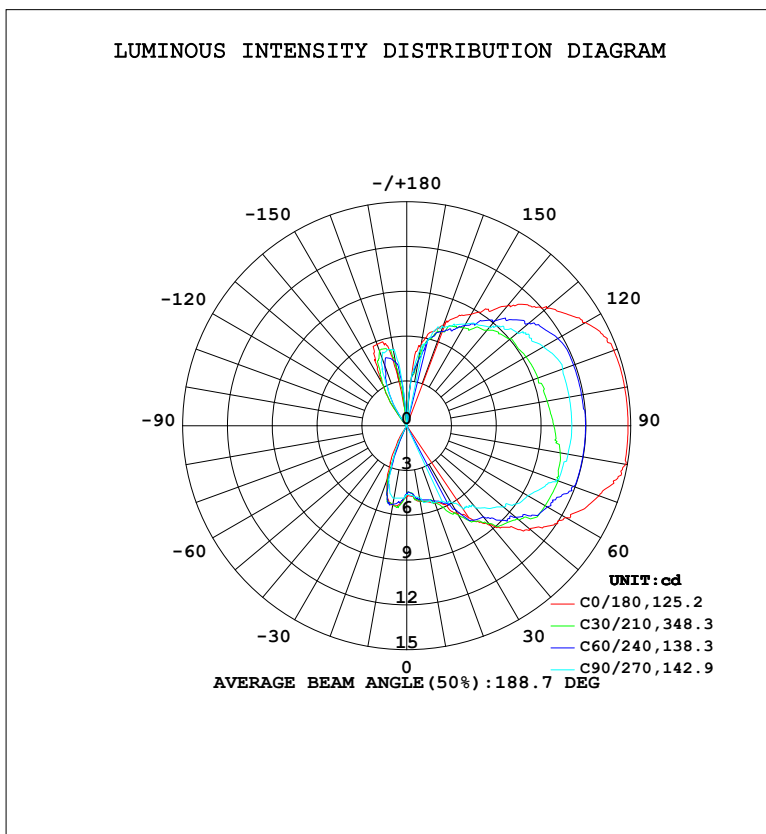


LUMINAIRE PHOTOMETRIC TEST REPORT

Test:U:120.34V I:0.2134A P:25.565W PF:0.9955 Freq:60.01Hz Lamp Flux:68.4516x1 lm		
NAME:	TYPE:	WEIGHT:
SPEC.:	DIM.:	SERIAL No.:
MFR.:	SUR.:	Shielding Angle:

DATA OF LAMP		PHOTOMETRIC DATA			
MODEL	HF7122-BK-SMK	Imax (cd)	15.65	S/MH (C0/180)	0.73
NOMINAL POWER (W)		LOR (%)	100.0	S/MH (C90/270)	0.67
RATED VOLTAGE (V)	120	TOTAL FLUX (lm)	68.452	η UP, DN (C0-180)	48.9, 46.1
NOMINAL FLUX (lm)	68.4516	CIE CLASS	DIFFUSE	η UP, DN (C180-360)	3.2, 1.8
LAMPS INSIDE	1	η up (%)	52.1	CIBSE SHR NOM	0.00
TEST VOLTAGE (V)	120.338	η down (%)	47.9	CIBSE SHR MAX	0.25



C Range: 0 - 360DEG
 C Interval: 15.0DEG
 Test Speed: HIGH
 Temperature: 24.5°C
 Operators: Dingmin Zhang
 Test Date: 2025-12-04

γ Range: 0 - 180DEG
 γ Interval: 0.5DEG
 Test System: EVERFINE GO-R5000_V2 SYSTEM V2.00.463
 Humidity: 65.0%
 Test Distance: 30.000m [K=0.9305]
 Remarks:

ZONAL FLUX DIAGRAM

ZONAL FLUX DIAGRAM:

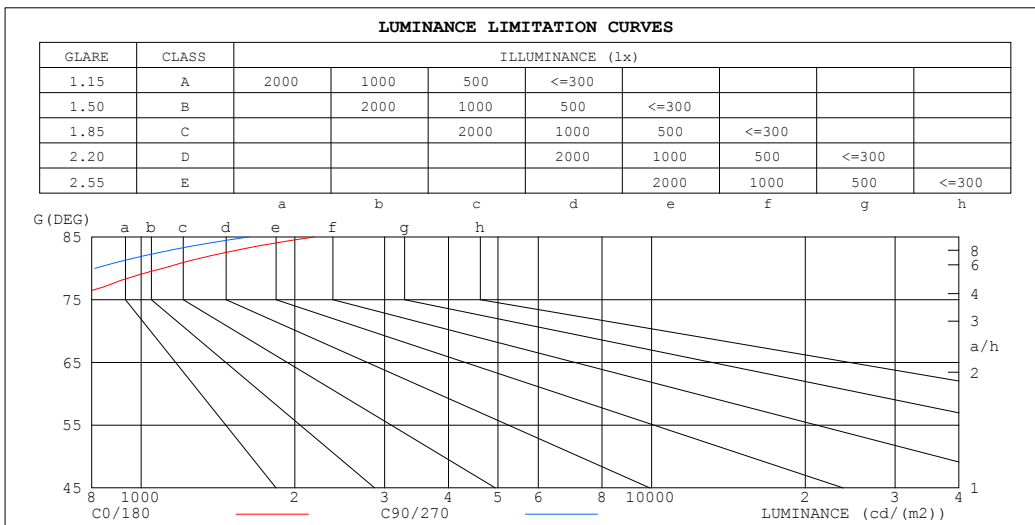
γ	C0	C45	C90	C135	C180	C225	C270	C315	γ	Φ zone	Φ total	\$lum, lamp
10	5.139	5.117	4.902	4.492	5.413	5.407	4.921	4.118	0- 10	0.4562	0.4562	0.67,0.67
20	5.501	5.535	5.469	5.527	3.855	3.423	3.181	3.021	10- 20	1.347	1.804	2.63,2.63
30	6.856	6.660	5.910	6.668	1.172	0	0.4185	1.253	20- 30	1.765	3.568	5.21,5.21
40	8.702	8.283	7.115	8.126	0	0	0	0.0037	30- 40	2.391	5.959	8.71,8.71
50	10.71	9.529	8.455	9.713	0	0	0	0	40- 50	3.472	9.431	13.8,13.8
60	12.30	10.46	9.375	11.22	0	0	0	0	50- 60	4.634	14.06	20.5,20.5
70	13.73	10.41	10.63	12.23	0	0	0	0	60- 70	5.650	19.71	28.8,28.8
80	14.90	10.38	10.96	13.31	0	0	0	0	70- 80	6.374	26.09	38.1,38.1
90	14.82	10.09	11.05	13.72	0	0	0	0	80- 90	6.702	32.79	47.9,47.9
100	14.82	10.01	11.05	13.90	0	0	0	0	90-100	6.714	39.50	57.7,57.7
110	14.76	9.911	11.11	13.89	0	0	0	0	100-110	6.443	45.95	67.1,67.1
120	13.82	9.646	10.57	13.06	0	0	0	0	110-120	5.857	51.80	75.7,75.7
130	12.22	9.253	9.686	12.04	0	0	0	0	120-130	4.966	56.77	82.9,82.9
140	10.47	8.519	8.623	10.63	0.4234	0	0.0026	0.1648	130-140	3.892	60.66	88.6,88.6
150	8.622	7.701	7.868	9.043	3.357	2.516	2.088	2.677	140-150	3.196	63.86	93.3,93.3
160	7.204	6.617	7.033	7.416	5.807	4.633	4.855	5.108	150-160	2.696	66.55	97.2,97.2
170	5.446	4.021	5.186	5.611	3.000	4.173	5.110	2.694	160-170	1.622	68.18	99.6,99.6
180	0	0	0	0	0	0	0	0	170-180	0.2760	68.45	100,100
DEG	LUMINOUS INTENSITY:cd									UNIT:lm		

C Range: 0 - 360DEG
 C Interval: 15.0DEG
 Test Speed: HIGH
 Temperature:24.5°C
 Operators:Dingmin Zhang
 Test Date:2025-12-04

γ Range: 0 - 180DEG
 γ Interval: 0.5DEG
 Test System:EVERFINE GO-R5000_V2 SYSTEM V2.00.463
 Humidity:65.0%
 Test Distance:30.000m [K=0.9305]
 Remarks:

LUMINANCE LIMITATION CURVES

Test:U:120.34V I:0.2134A P:25.565W PF:0.9955 Freq:60.01Hz Lamp Flux:68.4516x1 lm		
NAME:	TYPE:	WEIGHT:
SPEC.:	DIM.:	SERIAL No.:
MFR.:	SUR.:	Shielding Angle:



LUMINANCE cd/(m2)		
G (DEG)	C0/180	C90/270
85	2186	1628
80	1103	812
75	712	537
70	516	400
65	400	303
60	316	241
55	262	204
50	214	169
45	175	143

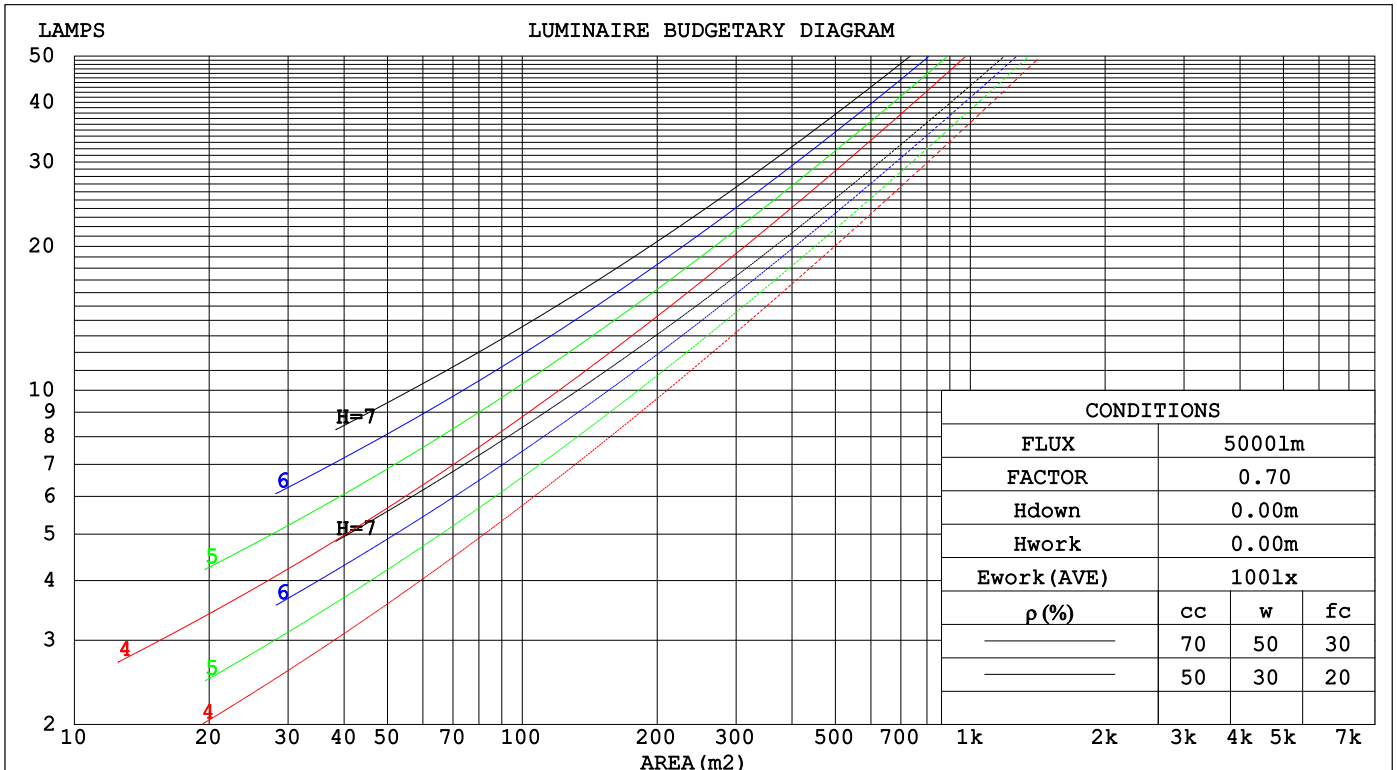
C Range: 0 - 360DEG
 C Interval: 15.0DEG
 Test Speed: HIGH
 Temperature: 24.5°C
 Operators: Dingmin Zhang
 Test Date: 2025-12-04

γ Range: 0 - 180DEG
 γ Interval: 0.5DEG
 Test System: EVERFINE GO-R5000_V2 SYSTEM V2.00.463
 Humidity: 65.0%
 Test Distance: 30.000m [K=0.9305]
 Remarks:

CU AND LUMINAIRE BUDGETARY ESTIMATE DIAGRAM

Test:U:120.34V I:0.2134A P:25.565W PF:0.9955 Freq:60.01Hz		
Lamp Flux:68.4516x1 lm		
NAME:	TYPE:	WEIGHT:
SPEC.:	DIM.:	SERIAL No.:
MFR.:	SUR.:	Shielding Angle:

pcc	80%			70%			50%			30%			10%			0
pw	50%	30%	10%	50%	30%	10%	50%	30%	10%	50%	30%	10%	50%	30%	10%	0
pfc	20%			20%			20%			20%			20%			0
RCR	RCR:Room Cavity Ratio						Coefficients of Utilization(CU)									
0.0	1.07	1.07	1.07	.98	.98	.98	.82	.82	.82	.68	.68	.68	.54	.54	.54	.48
1.0	.86	.80	.75	.79	.74	.69	.65	.61	.57	.52	.49	.46	.40	.38	.36	.30
2.0	.73	.64	.58	.66	.59	.53	.54	.49	.44	.43	.39	.35	.33	.30	.27	.22
3.0	.62	.53	.46	.57	.49	.42	.46	.40	.35	.37	.32	.28	.28	.24	.21	.16
4.0	.54	.45	.38	.49	.41	.35	.40	.34	.29	.32	.27	.23	.24	.20	.17	.13
5.0	.48	.38	.31	.44	.35	.29	.36	.29	.24	.28	.23	.19	.21	.17	.14	.11
6.0	.42	.33	.27	.39	.31	.25	.32	.25	.20	.25	.20	.16	.19	.15	.12	.09
7.0	.38	.29	.23	.35	.27	.21	.29	.22	.18	.23	.18	.14	.17	.13	.10	.08
8.0	.34	.26	.20	.31	.24	.18	.26	.20	.15	.21	.16	.12	.16	.12	.09	.06
9.0	.31	.23	.18	.29	.21	.16	.24	.18	.13	.19	.14	.11	.14	.11	.08	.06
10.0	.29	.21	.16	.26	.19	.14	.22	.16	.12	.17	.13	.10	.13	.10	.07	.05



C Range: 0 - 360DEG
 C Interval: 15.0DEG
 Test Speed: HIGH
 Temperature:24.5°C
 Operators:Dingmin Zhang
 Test Date:2025-12-04

γ Range: 0 - 180DEG
 γ Interval: 0.5DEG
 Test System:EVERFINE GO-R5000_V2 SYSTEM V2.00.463
 Humidity:65.0%
 Test Distance:30.000m [K=0.9305]
 Remarks:

WEC AND CCEC

Test:U:120.34V I:0.2134A P:25.565W PF:0.9955 Freq:60.01Hz									
Lamp Flux:68.4516x1 lm									
NAME:			TYPE:			WEIGHT:			
SPEC.:			DIM.:			SERIAL No.:			
MFR.:			SUR.:			Shielding Angle:			

ρ _{cc}	80%			70%			50%			30%			10%			0
ρ _w	50%	30%	10%	50%	30%	10%	50%	30%	10%	50%	30%	10%	50%	30%	10%	0
ρ _{fc}	20%			20%			20%			20%			20%			0
RCR	RCR:Room Cavity Ratio						Wall Exitance Coefficients(WEC)									
0.0																
1.0	.412	.235	.074	.389	.222	.071	.346	.199	.063	.306	.177	.057	.270	.156	.050	
2.0	.343	.188	.058	.322	.177	.055	.282	.157	.049	.246	.138	.043	.212	.120	.038	
3.0	.298	.159	.048	.279	.149	.045	.243	.132	.040	.209	.115	.035	.178	.099	.031	
4.0	.265	.138	.040	.247	.129	.038	.214	.114	.034	.183	.098	.030	.155	.084	.026	
5.0	.239	.122	.035	.223	.114	.033	.192	.100	.029	.164	.086	.026	.137	.073	.022	
6.0	.217	.109	.031	.203	.102	.029	.174	.089	.026	.148	.077	.023	.123	.065	.019	
7.0	.200	.099	.028	.186	.093	.026	.160	.081	.023	.135	.069	.020	.112	.058	.017	
8.0	.184	.090	.025	.172	.085	.024	.147	.074	.021	.125	.063	.018	.103	.053	.015	
9.0	.171	.083	.023	.159	.078	.022	.137	.068	.019	.116	.058	.017	.095	.048	.014	
10.0	.160	.077	.021	.149	.072	.020	.128	.063	.018	.108	.054	.015	.089	.045	.013	

ρ _{cc}	80%			70%			50%			30%			10%			0
ρ _w	50%	30%	10%	50%	30%	10%	50%	30%	10%	50%	30%	10%	50%	30%	10%	0
ρ _{fc}	20%			20%			20%			20%			20%			0
RCR	RCR:Room Cavity Ratio						Ceiling Cavity Exitance Coefficients(CCEC)									
0.0	.587	.587	.587	.502	.502	.502	.343	.343	.343	.197	.197	.197	.063	.063	.063	
1.0	.588	.555	.526	.503	.477	.453	.344	.328	.313	.198	.190	.182	.063	.061	.059	
2.0	.582	.535	.495	.498	.460	.428	.342	.318	.298	.197	.185	.175	.063	.060	.057	
3.0	.575	.520	.475	.493	.448	.412	.338	.311	.289	.195	.182	.170	.063	.059	.056	
4.0	.568	.508	.463	.487	.439	.402	.335	.306	.283	.194	.179	.167	.062	.058	.055	
5.0	.560	.499	.454	.481	.432	.395	.331	.302	.279	.192	.177	.166	.062	.058	.055	
6.0	.553	.492	.448	.475	.426	.390	.328	.298	.276	.190	.175	.164	.061	.057	.054	
7.0	.546	.486	.444	.470	.421	.387	.325	.295	.274	.189	.174	.163	.061	.057	.054	
8.0	.540	.481	.440	.465	.417	.384	.321	.293	.272	.187	.173	.162	.061	.057	.054	
9.0	.534	.476	.438	.460	.413	.382	.319	.291	.271	.186	.172	.162	.060	.056	.054	
10.0	.528	.472	.435	.455	.410	.380	.316	.289	.270	.184	.171	.161	.060	.056	.053	

C Range: 0 - 360DEG
 C Interval: 15.0DEG
 Test Speed: HIGH
 Temperature:24.5°C
 Operators:Dingmin Zhang
 Test Date:2025-12-04

γ Range: 0 - 180DEG
 γ Interval: 0.5DEG
 Test System:EVERFINE GO-R5000_V2 SYSTEM V2.00.463
 Humidity:65.0%
 Test Distance:30.000m [K=0.9305]
 Remarks:

UGR(Unified Glare Rating) Table

Test:U:120.34V I:0.2134A P:25.565W PF:0.9955 Freq:60.01Hz										
Lamp Flux:68.4516x1 lm										
NAME:			TYPE:			WEIGHT:				
SPEC.:			DIM.:			SERIAL No.:				
MFR.:			SUR.:			Shielding Angle:				
ceiling/cavity	0.7	0.7	0.5	0.5	0.3	0.7	0.7	0.5	0.5	0.3
walls	0.5	0.3	0.5	0.3	0.3	0.5	0.3	0.5	0.3	0.3
working plane	0.2	0.2	0.2	0.2	0.2	0.2	0.2	0.2	0.2	0.2
Room dimensions	Viewed crosswise					Viewed endwise				
x = 2H y = 2H	7.2	8.3	8.1	9.2	10.4	6.8	7.8	7.7	8.7	9.9
3H	10.9	11.9	11.8	12.8	14.0	10.5	11.4	11.4	12.4	13.6
4H	13.0	13.9	13.9	14.8	16.1	12.4	13.3	13.4	14.3	15.5
6H	15.3	16.2	16.2	17.1	18.4	14.5	15.4	15.5	16.3	17.6
8H	16.6	17.4	17.5	18.4	19.6	15.6	16.5	16.6	17.4	18.7
12H	18.0	18.8	19.0	19.8	21.1	16.9	17.7	17.8	18.7	19.9
4H 2H	8.1	9.0	9.0	9.9	11.2	7.8	8.7	8.7	9.7	10.9
3H	11.7	12.5	12.7	13.5	14.8	11.6	12.4	12.5	13.4	14.6
4H	13.9	14.6	14.8	15.6	16.9	13.8	14.5	14.7	15.5	16.8
6H	16.3	17.0	17.3	18.0	19.3	16.1	16.8	17.1	17.8	19.1
8H	17.7	18.3	18.7	19.3	20.7	17.4	18.0	18.3	19.0	20.3
12H	19.3	19.9	20.3	20.9	22.2	18.7	19.3	19.7	20.3	21.6
8H 4H	14.4	15.0	15.4	16.0	17.4	14.3	14.9	15.3	16.0	17.3
6H	17.0	17.5	18.0	18.6	19.9	17.0	17.5	18.0	18.5	19.9
8H	18.5	19.0	19.5	20.0	21.4	18.5	19.0	19.5	20.0	21.4
12H	20.3	20.7	21.3	21.8	23.1	20.2	20.6	21.2	21.6	23.0
12H 4H	14.6	15.2	15.6	16.2	17.5	14.5	15.1	15.5	16.1	17.4
6H	17.3	17.7	18.3	18.8	20.1	17.2	17.7	18.2	18.7	20.1
8H	18.8	19.2	19.9	20.3	21.7	18.8	19.2	19.9	20.3	21.7
Variations with the observer position at spacings(CIE Pub.117):										
S = 1.0H	+ 0.1 / - 0.1					+ 0.1 / - 0.1				
1.5H	+ 0.2 / - 0.2					+ 0.3 / - 0.4				
2.0H	+ 0.3 / - 0.3					+ 0.4 / - 0.5				

CIE Pub.117, 68.45 lm Total Lamp Luminous Flux Corrected (8log(F/F0) = -9.3)
 Area: 0.07775 m2

C Range: 0 - 360DEG	γ Range: 0 - 180DEG
C Interval: 15.0DEG	γ Interval: 0.5DEG
Test Speed: HIGH	Test System:EVERFINE GO-R5000_V2 SYSTEM V2.00.463
Temperature:24.5°C	Humidity:65.0%
Operators:Dingmin Zhang	Test Distance:30.000m [K=0.9305]
Test Date:2025-12-04	Remarks:

UTILIZATION FACTORS TABLE

Test:U:120.34V I:0.2134A P:25.565W PF:0.9955 Freq:60.01Hz Lamp Flux:68.4516x1 lm		
NAME:	TYPE:	WEIGHT:
SPEC.:	DIM.:	SERIAL No.:
MFR.:	SUR.:	Shielding Angle:

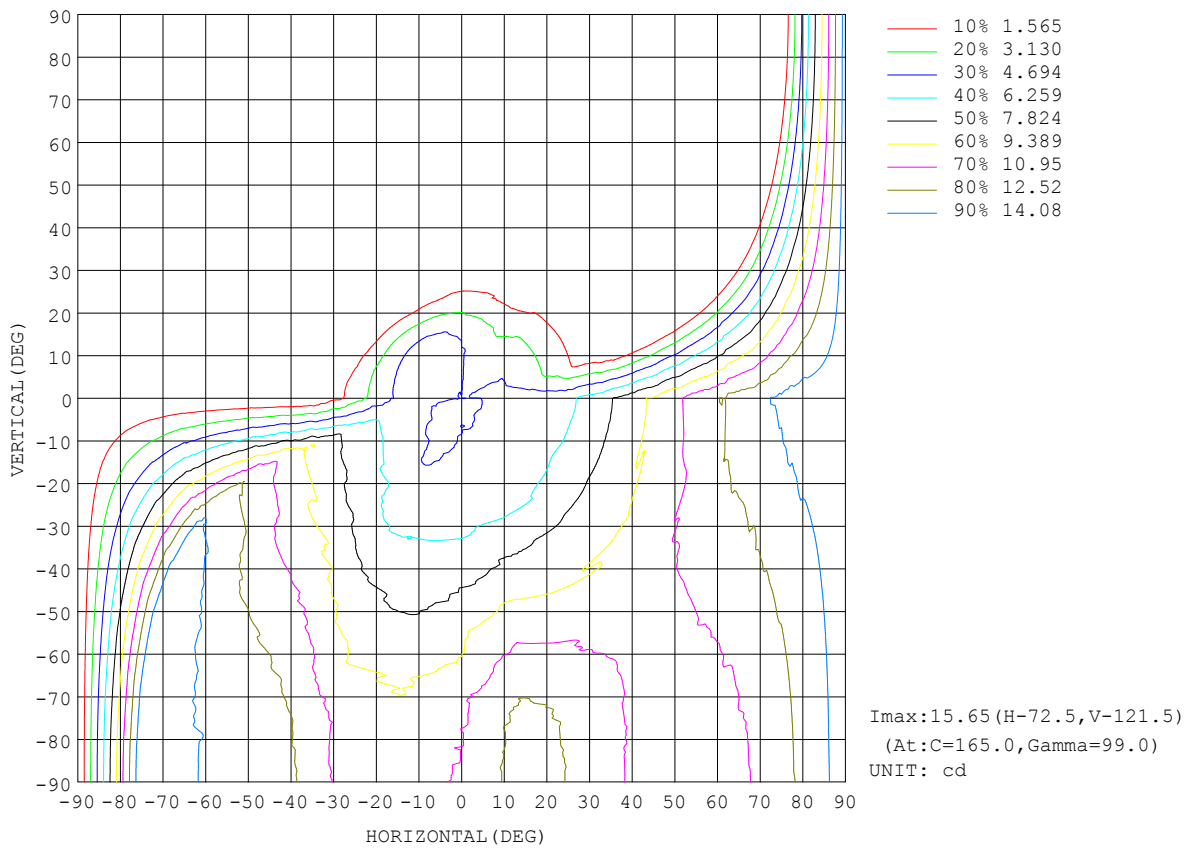
REFLECTANCE										
Ceiling	0.8	0.8	0.8	0.7	0.7	0.7	0.5	0.5	0.5	0
Walls	0.7	0.5	0.3	0.7	0.5	0.3	0.7	0.5	0.3	0
Working plane	0.2	0.2	0.2	0.2	0.2	0.2	0.2	0.2	0.2	0
ROOM INDEX	UTILIZATION FACTORS (PERCENT) $k(RI) \times RCR = 5$									
k = 0.60	35	23	16	33	22	15	30	20	14	6
0.80	44	30	22	41	28	21	36	25	18	9
1.00	51	37	27	47	34	26	41	32	23	11
1.25	58	43	34	53	41	32	46	35	28	14
1.50	63	49	39	58	46	37	49	39	32	16
2.00	71	58	48	65	53	45	55	46	39	20
2.50	76	64	54	70	59	51	58	50	43	23
3.00	80	69	60	73	64	56	61	54	48	25
4.00	85	76	68	78	70	63	65	59	53	29
5.00	89	80	73	81	74	68	68	62	57	31
ROOM INDEX	UF(total)									Direct
According to DIN EN 13032-2 2004			Suspended				SHRNOM = 1.25			

C Range: 0 - 360DEG
 C Interval: 15.0DEG
 Test Speed: HIGH
 Temperature:24.5°C
 Operators:Dingmin Zhang
 Test Date:2025-12-04

γ Range: 0 - 180DEG
 γ Interval: 0.5DEG
 Test System:EVERFINE GO-R5000_V2 SYSTEM V2.00.463
 Humidity:65.0%
 Test Distance:30.000m [K=0.9305]
 Remarks:

ISOCANDELA DIAGRAM

Test:U:120.34V I:0.2134A P:25.565W PF:0.9955 Freq:60.01Hz Lamp Flux:68.4516x1 lm		
NAME:	TYPE:	WEIGHT:
SPEC.:	DIM.:	SERIAL No.:
MFR.:	SUR.:	Shielding Angle:



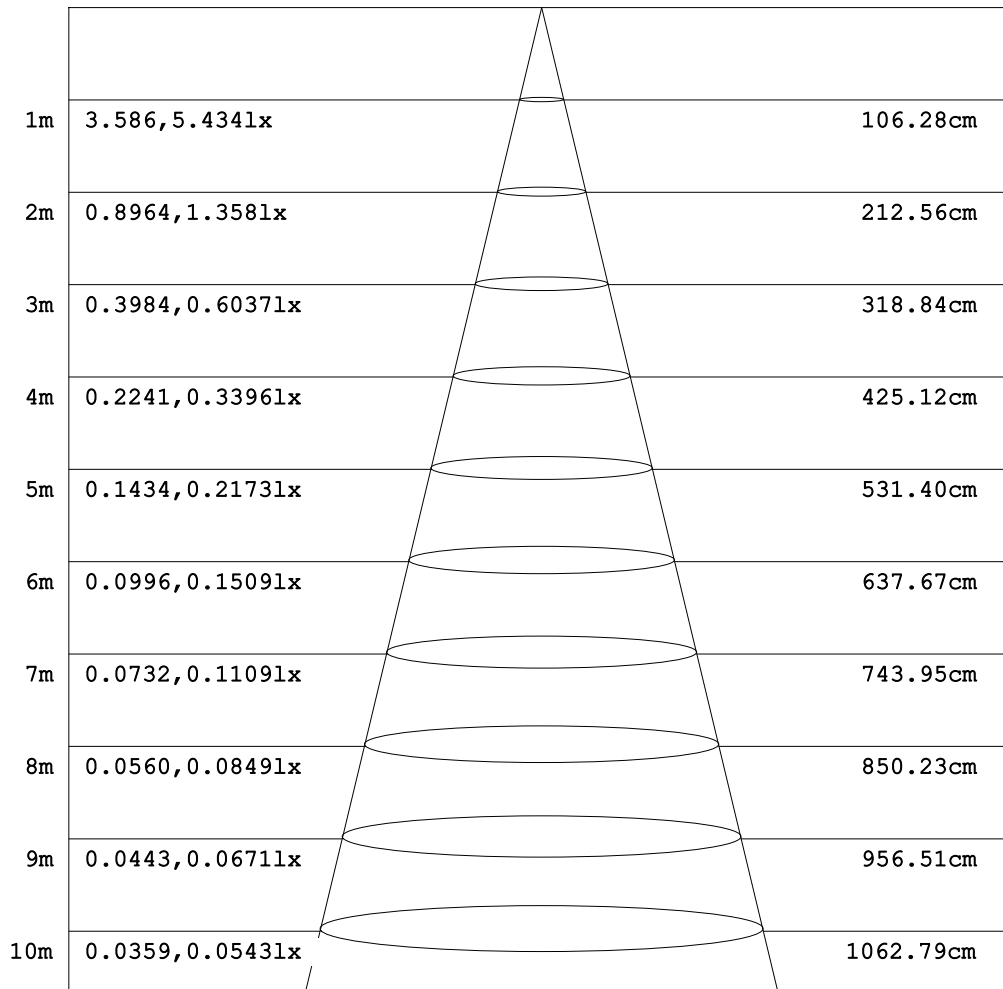
C Range: 0 - 360DEG
 C Interval: 15.0DEG
 Test Speed: HIGH
 Temperature:24.5°C
 Operators:Dingmin Zhang
 Test Date:2025-12-04

γ Range: 0 - 180DEG
 γ Interval: 0.5DEG
 Test System:EVERFINE GO-R5000_V2 SYSTEM V2.00.463
 Humidity:65.0%
 Test Distance:30.000m [K=0.9305]
 Remarks:

AAI Figure

Test:U:120.34V I:0.2134A P:25.565W PF:0.9955 Freq:60.01Hz Lamp Flux:68.4516x1 lm		
NAME:	TYPE:	WEIGHT:
SPEC.:	DIM.:	SERIAL No.:
MFR.:	SUR.:	Shielding Angle:

Flux out:3.185 lm



Height Eavg, Emax Angle:55.97deg Diameter

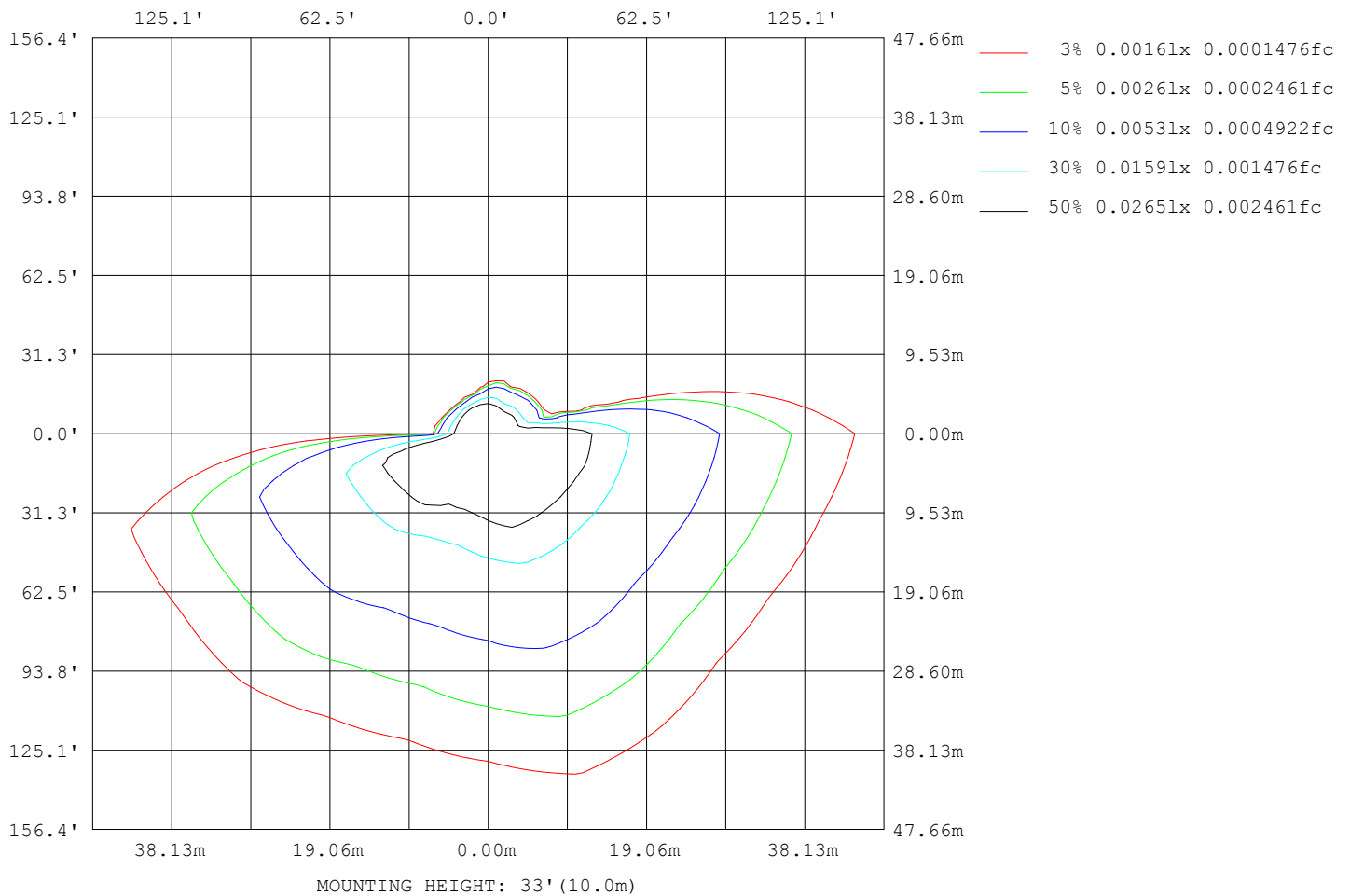
Note:The Curves indicate the illuminated area and the average illumination when the luminaire is at different distance.

C Range: 0 - 360DEG
C Interval: 15.0DEG
Test Speed: HIGH
Temperature:24.5°C
Operators:Dingmin Zhang
Test Date:2025-12-04

γ Range: 0 - 180DEG
γ Interval: 0.5DEG
Test System:EVERFINE GO-R5000_V2 SYSTEM V2.00.463
Humidity:65.0%
Test Distance:30.000m [K=0.9305]
Remarks:

ISOLUX DIAGRAM

Test:U:120.34V I:0.2134A P:25.565W PF:0.9955 Freq:60.01Hz Lamp Flux:68.4516x1 lm		
NAME:	TYPE:	WEIGHT:
SPEC.:	DIM.:	SERIAL No.:
MFR.:	SUR.:	Shielding Angle:



C Range: 0 - 360DEG
 C Interval: 15.0DEG
 Test Speed: HIGH
 Temperature:24.5°C
 Operators:Dingmin Zhang
 Test Date:2025-12-04

γ Range: 0 - 180DEG
 γ Interval: 0.5DEG
 Test System:EVERFINE GO-R5000_V2 SYSTEM V2.00.463
 Humidity:65.0%
 Test Distance:30.000m [K=0.9305]
 Remarks:

LED Avg.L Report

Test:U:120.34V I:0.2134A P:25.565W PF:0.9955 Freq:60.01Hz Lamp Flux:68.4516x1 lm		
NAME:	TYPE:	WEIGHT:
SPEC.:	DIM.:	SERIAL No.:
MFR.:	SUR.:	Shielding Angle:

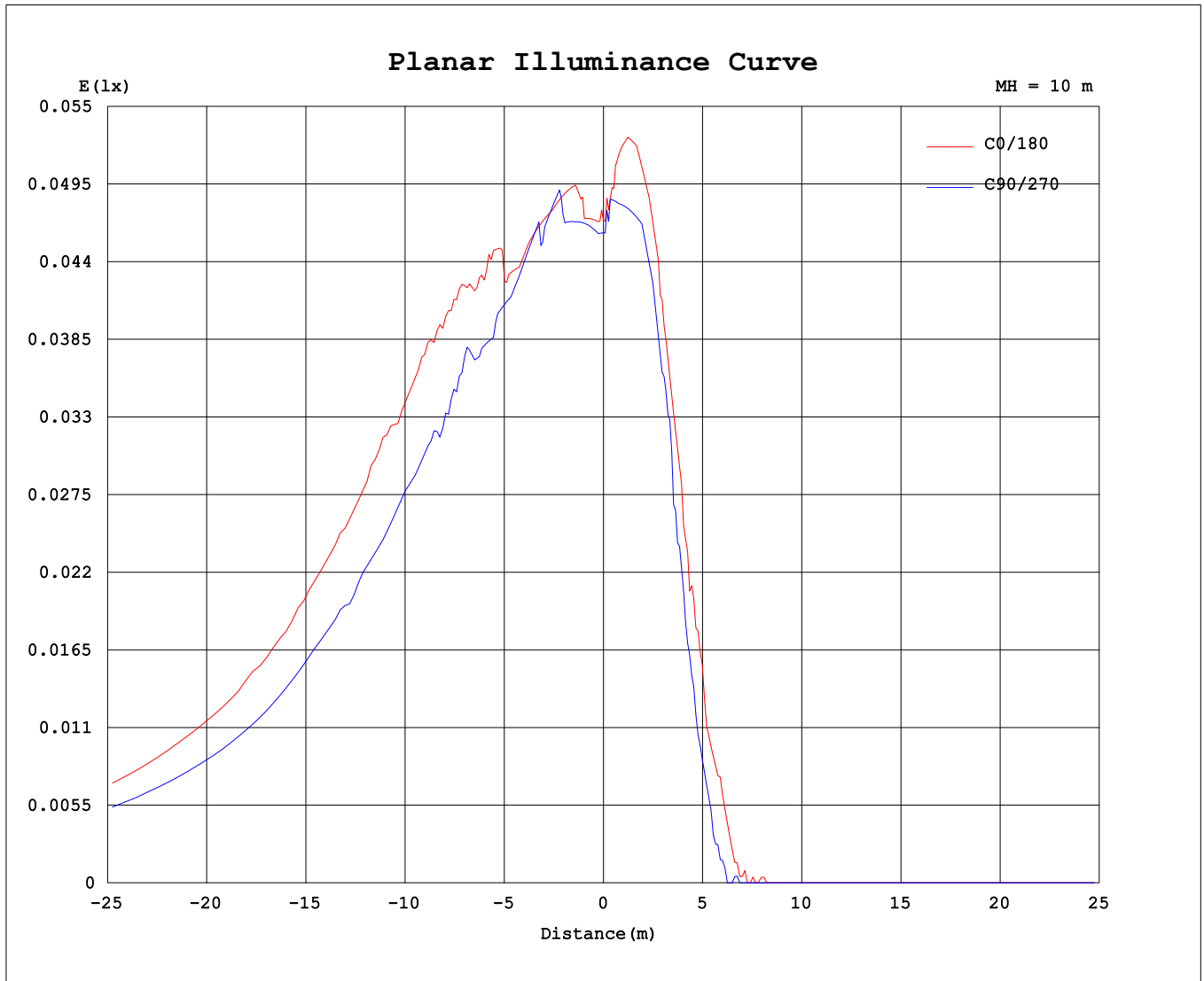
AvgL	cd/m2
L_0~180 (65) av	200
L_0~180 (75) av	356
L_0~180 (85) av	1093
L_90~270 (65) av	151
L_90~270 (75) av	268
L_90~270 (85) av	814
L_45 (65) av	170
L_45 (75) av	287
L_45 (85) av	876

Standard: GB/T 29293-2012

C Range: 0 - 360DEG
C Interval: 15.0DEG
Test Speed: HIGH
Temperature:24.5°C
Operators:Dingmin Zhang
Test Date:2025-12-04

γ Range: 0 - 180DEG
γ Interval: 0.5DEG
Test System:EVERFINE GO-R5000_V2 SYSTEM V2.00.463
Humidity:65.0%
Test Distance:30.000m [K=0.9305]
Remarks:

Planar Illuminance Curve



C Range: 0 - 360DEG
C Interval: 15.0DEG
Test Speed: HIGH
Temperature: 24.5°C
Operators: Dingmin Zhang
Test Date: 2025-12-04

γ Range: 0 - 180DEG
γ Interval: 0.5DEG
Test System: EVERFINE GO-R5000_V2 SYSTEM V2.00.463
Humidity: 65.0%
Test Distance: 30.000m [K=0.9305]
Remarks:

LUMINOUS DISTRIBUTION INTENSITY DATA

Test:U:120.34V I:0.2134A P:25.565W PF:0.9955 Freq:60.01Hz		
Lamp Flux:68.4516x1 lm		
NAME:	TYPE:	WEIGHT:
SPEC.:	DIM.:	SERIAL No.:
MFR.:	SUR.:	Shielding Angle:

Table--1

UNIT: cd

C (DEG) \ γ (DEG)	0	15	30	45	60	75	90	105	120	135	150	165	180	195	210	225	240	255	270
0	4.69	4.52	4.52	4.52	4.52	4.60	4.60	4.27	4.10	4.19	4.52	4.44	4.69	4.52	4.52	4.52	4.52	4.60	4.60
5	4.76	4.77	4.60	4.90	4.58	4.35	4.72	4.40	4.14	4.27	4.60	4.44	5.26	5.35	5.36	5.26	5.19	5.05	4.86
10	5.14	5.31	5.12	5.12	5.03	5.19	4.90	4.49	4.23	4.49	5.01	5.08	5.41	5.25	5.37	5.41	5.35	5.26	4.92
15	5.27	5.34	5.23	5.28	5.14	5.32	5.27	4.81	4.45	5.27	5.39	5.46	4.99	4.94	5.10	5.27	5.10	4.86	4.43
20	5.50	5.44	5.44	5.53	5.37	5.37	5.47	5.33	4.87	5.53	5.87	6.29	3.86	3.86	3.69	3.42	3.10	3.19	3.18
25	5.81	5.86	6.27	5.89	5.72	5.53	5.58	5.52	5.23	6.34	6.66	6.99	2.43	1.84	1.25	0.92	0.59	1.17	1.60
30	6.86	6.87	6.91	6.66	6.45	6.44	5.91	5.85	5.53	6.67	7.57	7.95	1.17	0.29	0.00	0.00	0.00	0.00	0.42
35	7.70	7.95	7.83	7.53	7.72	7.03	6.78	6.28	6.29	7.45	8.21	8.80	0.08	0.00	0.00	0.00	0.00	0.00	0.00
40	8.70	8.61	8.54	8.28	7.96	7.88	7.11	6.70	6.74	8.13	9.29	9.80	0.00	0.00	0.00	0.00	0.00	0.00	0.00
45	9.62	9.46	9.29	9.04	8.96	8.88	7.85	7.06	7.28	9.29	10.0	10.9	0.00	0.00	0.00	0.00	0.00	0.00	0.00
50	10.7	10.5	9.79	9.53	9.54	9.68	8.45	7.62	7.96	9.71	10.7	12.0	0.00	0.00	0.00	0.00	0.00	0.00	0.00
55	11.7	10.9	10.7	10.0	10.5	10.7	9.08	8.03	8.34	10.5	11.4	12.7	0.00	0.00	0.00	0.00	0.00	0.00	0.00
60	12.3	11.5	10.7	10.5	10.9	11.1	9.38	8.39	8.96	11.2	12.0	13.4	0.00	0.00	0.00	0.00	0.00	0.00	0.00
65	13.1	12.2	10.7	10.4	11.3	11.9	9.95	9.04	9.51	11.8	12.6	14.2	0.00	0.00	0.00	0.00	0.00	0.00	0.00
70	13.7	12.1	10.8	10.4	11.9	12.6	10.6	9.29	9.87	12.2	13.3	14.7	0.00	0.00	0.00	0.00	0.00	0.00	0.00
75	14.3	12.2	10.6	10.4	12.0	13.0	10.8	9.55	10.5	12.7	13.5	15.1	0.00	0.00	0.00	0.00	0.00	0.00	0.00
80	14.9	12.0	10.4	10.4	12.0	13.4	11.0	9.96	10.7	13.3	13.6	15.3	0.00	0.00	0.00	0.00	0.00	0.00	0.00
85	14.8	12.0	10.0	10.1	12.0	13.4	11.0	10.4	10.8	13.6	14.0	15.5	0.00	0.00	0.00	0.00	0.00	0.00	0.00
90	14.8	11.9	9.85	10.1	12.0	13.4	11.0	10.6	10.9	13.7	13.9	15.6	0.00	0.00	0.00	0.00	0.00	0.00	0.00
95	14.8	11.8	9.67	10.1	12.0	13.4	11.0	10.7	10.9	13.9	13.9	15.6	0.00	0.00	0.00	0.00	0.00	0.00	0.00
100	14.8	11.8	9.55	10.0	11.9	13.3	11.0	10.7	10.9	13.9	13.9	15.5	0.00	0.00	0.00	0.00	0.00	0.00	0.00
105	14.8	11.7	9.54	9.95	11.9	13.2	11.0	10.6	10.9	13.9	13.7	15.1	0.00	0.00	0.00	0.00	0.00	0.00	0.00
110	14.8	11.4	9.36	9.91	11.9	12.8	11.1	10.4	10.9	13.9	13.4	14.5	0.00	0.00	0.00	0.00	0.00	0.00	0.00
115	14.5	11.3	9.31	9.79	11.9	12.4	11.0	10.3	10.7	13.7	13.0	14.0	0.00	0.00	0.00	0.00	0.00	0.00	0.00
120	13.8	11.3	9.23	9.65	11.7	11.9	10.6	10.2	10.3	13.1	12.6	13.3	0.00	0.00	0.00	0.00	0.00	0.00	0.00
125	13.1	11.2	9.09	9.48	11.3	11.3	10.2	9.96	10.0	12.7	11.9	12.6	0.00	0.00	0.00	0.00	0.00	0.00	0.00
130	12.2	10.7	9.12	9.25	10.7	10.7	9.69	9.64	9.52	12.0	11.5	11.7	0.00	0.00	0.00	0.00	0.00	0.00	0.00
135	11.5	10.4	8.71	8.89	10.0	10.0	9.21	9.46	8.96	11.4	11.0	10.9	0.00	0.00	0.00	0.00	0.00	0.00	0.00
140	10.5	9.78	8.36	8.52	9.17	9.37	8.62	8.88	8.48	10.6	10.2	10.00	0.42	0.56	0.50	0.00	0.00	0.00	0.00
145	9.54	9.20	8.03	7.95	8.62	8.36	8.27	8.31	8.04	9.91	9.57	9.36	1.93	2.17	1.93	1.17	0.76	0.92	0.84
150	8.62	8.39	7.58	7.70	7.75	7.97	7.87	7.95	7.48	9.04	9.04	8.78	3.36	3.60	3.35	2.52	2.09	1.92	2.09
155	8.04	7.61	7.35	7.28	7.03	7.11	7.53	7.39	7.07	8.20	8.45	8.07	5.04	4.94	4.52	3.60	3.26	3.09	3.54
160	7.20	6.98	6.71	6.62	6.71	6.78	7.03	6.95	6.69	7.42	7.99	7.61	5.81	5.70	5.36	4.63	4.30	4.09	4.85
165	6.51	6.16	6.01	6.14	6.11	6.19	6.11	6.36	6.26	6.74	6.86	6.78	5.69	5.70	5.36	4.86	4.70	4.93	5.19
170	5.45	5.35	4.44	4.02	4.39	4.94	5.19	5.10	5.11	5.61	5.02	3.87	3.00	3.01	3.93	4.17	4.31	4.52	5.11
175	2.78	3.01	2.76	2.52	2.85	2.75	2.59	3.09	3.41	3.33	3.24	2.08	0.08	0.09	0.83	1.24	1.67	1.87	1.87
180	0.00	0.00	0.00	0.00	0.00	0.00	0.00	0.00	0.00	0.00	0.00	0.00	0.00	0.00	0.00	0.00	0.00	0.00	0.00

C Range: 0 - 360DEG

C Interval: 15.0DEG

Test Speed: HIGH

Temperature:24.5°C

Operators:Dingmin Zhang

Test Date:2025-12-04

γ Range: 0 - 180DEG

γ Interval: 0.5DEG

Test System:EVERFINE GO-R5000_V2 SYSTEM V2.00.463

Humidity:65.0%

Test Distance:30.000m [K=0.9305]

Remarks:

LUMINOUS DISTRIBUTION INTENSITY DATA

Test:U:120.34V I:0.2134A P:25.565W PF:0.9955 Freq:60.01Hz Lamp Flux:68.4516x1 lm		
NAME:	TYPE:	WEIGHT:
SPEC.:	DIM.:	SERIAL No.:
MFR.:	SUR.:	Shielding Angle:

Table--2

UNIT: cd

C (DEG) \ γ (DEG)	285	300	315	330	345														
0	4.27	4.10	4.19	4.52	4.44														
5	4.29	4.08	4.15	4.66	5.02														
10	4.07	3.97	4.12	4.58	4.94														
15	3.91	3.35	4.19	4.19	4.19														
20	2.68	2.51	3.02	3.10	3.02														
25	1.67	1.39	1.81	1.92	1.77														
30	0.92	0.59	1.25	1.38	1.17														
35	0.08	0.08	0.25	0.42	0.43														
40	0.00	0.00	0.00	0.00	0.00														
45	0.00	0.00	0.00	0.00	0.00														
50	0.00	0.00	0.00	0.00	0.00														
55	0.00	0.00	0.00	0.00	0.00														
60	0.00	0.00	0.00	0.00	0.00														
65	0.00	0.00	0.00	0.00	0.00														
70	0.00	0.00	0.00	0.00	0.00														
75	0.00	0.00	0.00	0.00	0.00														
80	0.00	0.00	0.00	0.00	0.00														
85	0.00	0.00	0.00	0.00	0.00														
90	0.00	0.00	0.00	0.00	0.00														
95	0.00	0.00	0.00	0.00	0.00														
100	0.00	0.00	0.00	0.00	0.00														
105	0.00	0.00	0.00	0.00	0.00														
110	0.00	0.00	0.00	0.00	0.00														
115	0.00	0.00	0.00	0.00	0.00														
120	0.00	0.00	0.00	0.00	0.00														
125	0.00	0.00	0.00	0.00	0.00														
130	0.00	0.00	0.00	0.00	0.00														
135	0.00	0.00	0.00	0.00	0.00														
140	0.08	0.08	0.16	0.50	0.66														
145	1.17	1.25	1.50	1.75	2.01														
150	2.51	2.51	2.68	2.93	3.60														
155	3.85	3.93	4.00	4.60	5.02														
160	5.00	5.22	5.11	5.61	5.81														
165	5.39	5.44	5.35	5.46	5.44														
170	5.19	3.01	2.69	5.03	5.28														
175	2.01	0.01	0.33	2.38	2.43														
180	0.00	0.00	0.00	0.00	0.00														

C Range: 0 - 360DEG
 C Interval: 15.0DEG
 Test Speed: HIGH
 Temperature:24.5°C
 Operators:Dingmin Zhang
 Test Date:2025-12-04

γ Range: 0 - 180DEG
 γ Interval: 0.5DEG
 Test System:EVERFINE GO-R5000_V2 SYSTEM V2.00.463
 Humidity:65.0%
 Test Distance:30.000m [K=0.9305]
 Remarks: