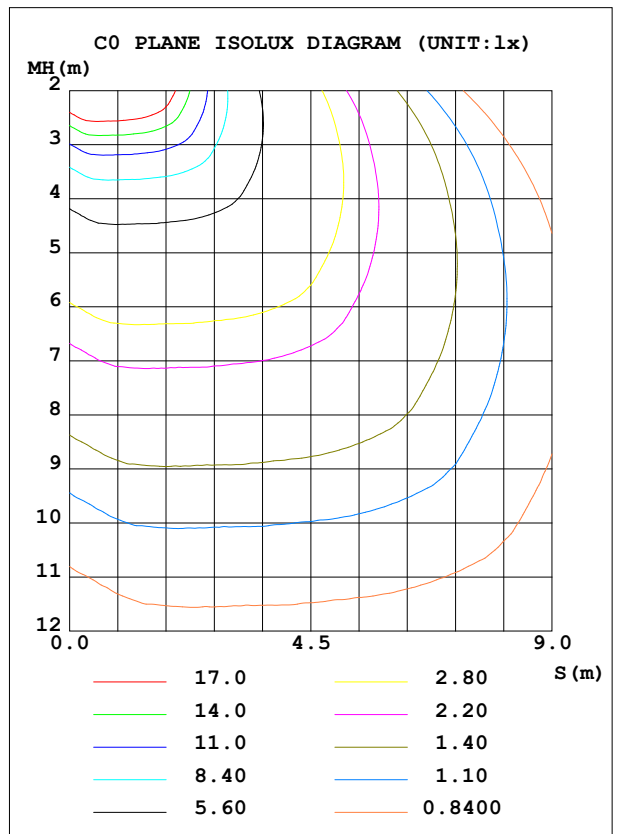
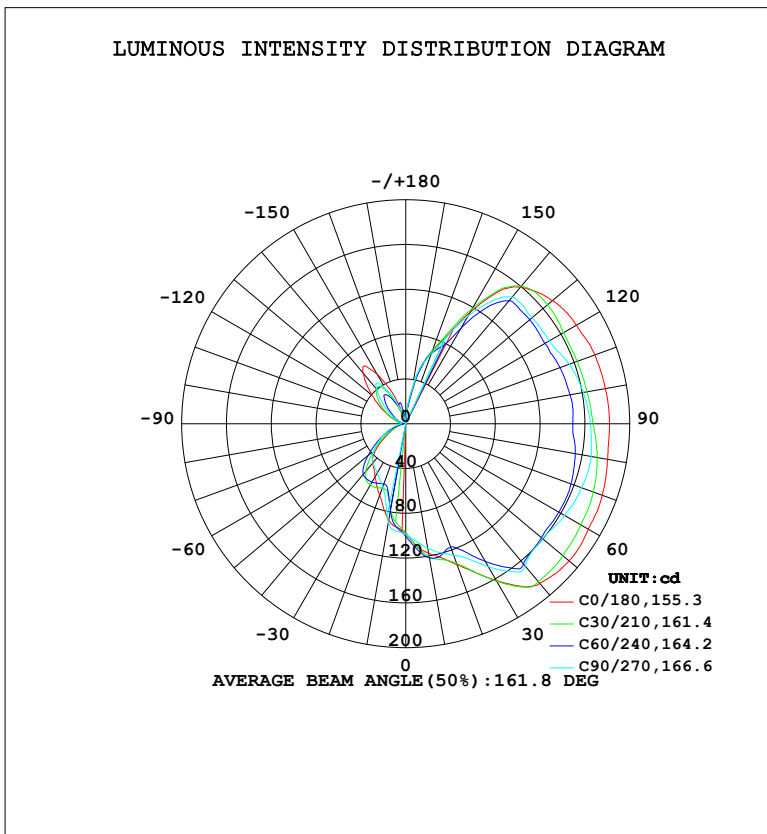


LUMINAIRE PHOTOMETRIC TEST REPORT

Test:U:120.17V I:0.9473A P:113.31W PF:0.9954 Freq:60.01Hz Lamp Flux:1094.02x1 lm		
NAME:	TYPE:	WEIGHT:
SPEC.:	DIM.:	SERIAL No.:
MFR.:	SUR.:	Shielding Angle:

DATA OF LAMP		PHOTOMETRIC DATA			
MODEL	HF7155-AB-WHT	Imax (cd)	190.9	S/MH (C0/180)	0.87
NOMINAL POWER (W)		LOR (%)	100.0	S/MH (C90/270)	0.74
RATED VOLTAGE (V)	120	TOTAL FLUX (lm)	1094.0	$\eta$ UP, DN (C0-180)	40.8, 45.8
NOMINAL FLUX (lm)	1094.02	CIE CLASS	DIFFUSE	$\eta$ UP, DN (C180-360)	5.1, 8.3
LAMPS INSIDE	1	$\eta$ up (%)	45.9	CIBSE SHR NOM	1.00
TEST VOLTAGE (V)	120.211	$\eta$ down (%)	54.1	CIBSE SHR MAX	1.15



C Range: 0 - 360DEG  
 C Interval: 15.0DEG  
 Test Speed: HIGH  
 Temperature: 24.5°C  
 Operators: Dingmin Zhang  
 Test Date: 2025-12-05

$\gamma$  Range: 0 - 180DEG  
 $\gamma$  Interval: 0.5DEG  
 Test System: EVERFINE GO-R5000\_V2 SYSTEM V2.00.463  
 Humidity: 65.0%  
 Test Distance: 30.000m [K=0.9305]  
 Remarks:

ZONAL FLUX DIAGRAM

ZONAL FLUX DIAGRAM:

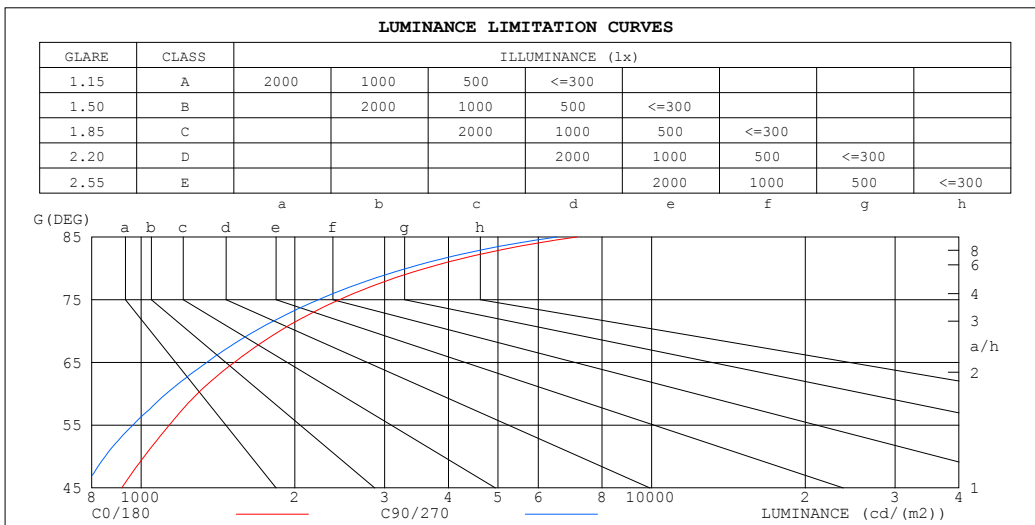
γ	C0	C45	C90	C135	C180	C225	C270	C315	γ	Φ zone	Φ total	%lum, lamp
10	117.2	122.6	112.8	114.4	87.38	75.36	89.22	77.64	0- 10	9.618	9.618	0.88,0.88
20	134.1	125.0	125.0	119.5	67.90	58.23	59.99	54.85	10- 20	26.77	36.39	3.33,3.33
30	161.7	151.6	147.4	145.4	54.91	65.46	50.94	55.59	20- 30	45.44	81.82	7.48,7.48
40	186.2	173.0	166.0	170.4	45.68	60.95	45.74	50.61	30- 40	68.79	150.6	13.8,13.8
50	190.4	168.6	159.6	169.3	33.77	40.83	36.82	37.76	40- 50	83.27	233.9	21.4,21.4
60	188.2	172.5	163.5	169.5	18.62	23.34	25.34	23.44	50- 60	88.48	322.4	29.5,29.5
70	186.6	178.1	167.1	174.4	9.241	11.26	15.31	13.19	60- 70	90.66	413.0	37.8,37.8
80	183.0	179.6	168.1	177.6	4.102	4.377	7.862	5.966	70- 80	90.19	503.2	46,46
90	181.9	177.4	164.7	180.4	3.231	3.141	3.966	4.816	80- 90	88.19	591.4	54.1,54.1
100	181.0	174.7	161.0	178.4	5.056	5.114	4.123	6.667	90-100	87.56	679.0	62.1,62.1
110	179.7	170.6	155.4	174.1	10.22	10.58	6.673	11.62	100-110	86.78	765.7	70,70
120	176.0	165.0	148.1	168.0	21.85	20.11	13.71	20.05	110-120	84.20	849.9	77.7,77.7
130	170.9	160.8	147.2	163.2	39.23	31.45	25.66	30.63	120-130	80.43	930.4	85,85
140	159.1	157.0	147.7	156.1	59.61	41.59	40.51	35.01	130-140	73.02	1003	91.7,91.7
150	115.1	110.1	111.0	112.0	50.84	31.78	36.75	27.49	140-150	54.84	1058	96.7,96.7
160	67.61	69.08	66.70	67.15	17.56	14.57	14.14	12.89	150-160	25.86	1084	99.1,99.1
170	28.62	25.02	27.85	23.47	3.877	10.03	1.687	9.218	160-170	9.096	1093	99.9,99.9
180	0	0.5614	0.8936	0	0	0.2557	0.6689	0.1682	170-180	0.8396	1094	100,100
DEG	LUMINOUS INTENSITY:cd									UNIT:lm		

C Range: 0 - 360DEG  
 C Interval: 15.0DEG  
 Test Speed: HIGH  
 Temperature:24.5°C  
 Operators:Dingmin Zhang  
 Test Date:2025-12-05

γ Range: 0 - 180DEG  
 γ Interval: 0.5DEG  
 Test System:EVERFINE GO-R5000\_V2 SYSTEM V2.00.463  
 Humidity:65.0%  
 Test Distance:30.000m [K=0.9305]  
 Remarks:

LUMINANCE LIMITATION CURVES

Test:U:120.17V I:0.9473A P:113.31W PF:0.9954 Freq:60.01Hz		
Lamp Flux:1094.02x1 lm		
NAME:	TYPE:	WEIGHT:
SPEC.:	DIM.:	SERIAL No.:
MFR.:	SUR.:	Shielding Angle:



LUMINANCE cd/(m2)		
G (DEG)	C0/180	C90/270
85	7144	6530
80	3607	3315
75	2447	2226
70	1868	1672
65	1522	1345
60	1289	1119
55	1135	963
50	1014	850
45	916	775

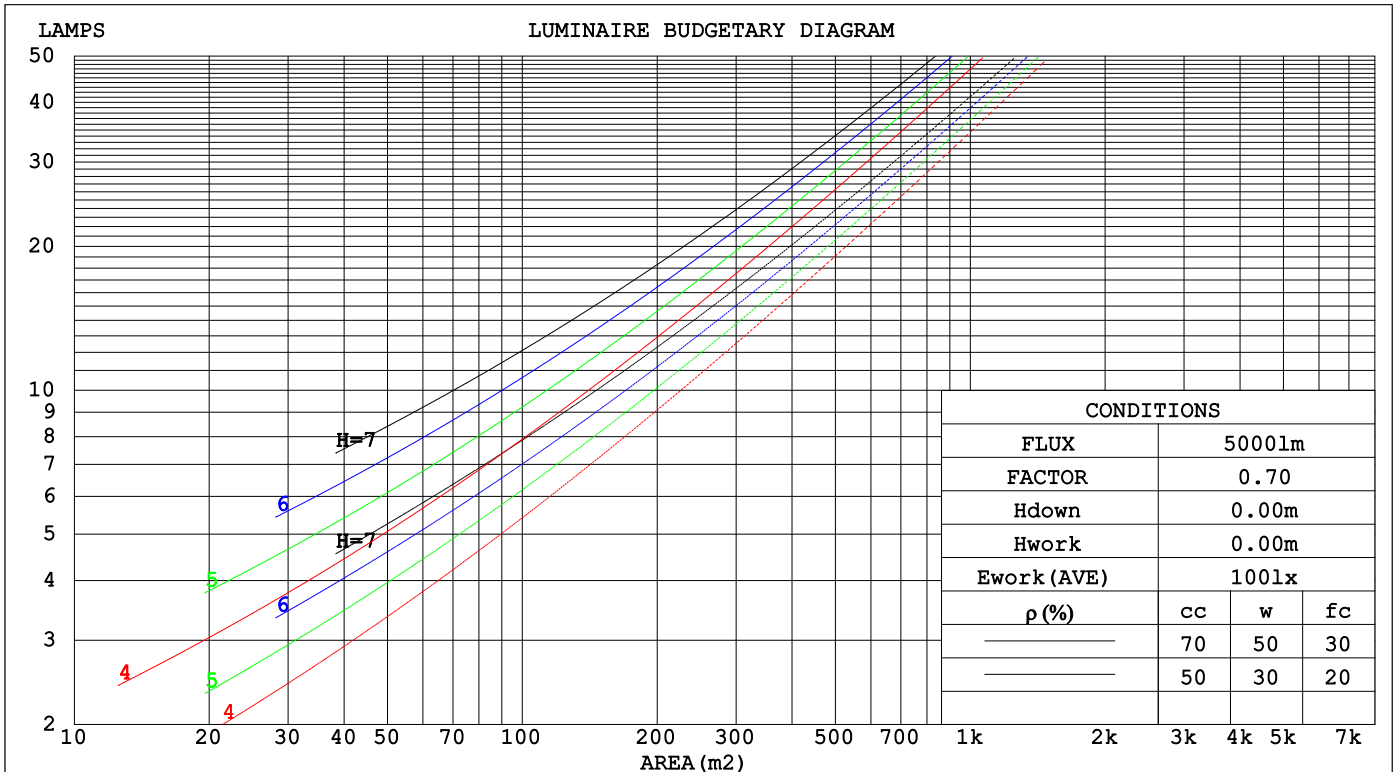
C Range: 0 - 360DEG  
 C Interval: 15.0DEG  
 Test Speed: HIGH  
 Temperature: 24.5°C  
 Operators: Dingmin Zhang  
 Test Date: 2025-12-05

γ Range: 0 - 180DEG  
 γ Interval: 0.5DEG  
 Test System: EVERFINE GO-R5000\_V2 SYSTEM V2.00.463  
 Humidity: 65.0%  
 Test Distance: 30.000m [K=0.9305]  
 Remarks:

CU AND LUMINAIRE BUDGETARY ESTIMATE DIAGRAM

Test:U:120.17V I:0.9473A P:113.31W PF:0.9954 Freq:60.01Hz		
Lamp Flux:1094.02x1 lm		
NAME:	TYPE:	WEIGHT:
SPEC.:	DIM.:	SERIAL No.:
MFR.:	SUR.:	Shielding Angle:

pcc	80%			70%			50%			30%			10%			0
pw	50%	30%	10%	50%	30%	10%	50%	30%	10%	50%	30%	10%	50%	30%	10%	0
pf <sub>c</sub>	20%			20%			20%			20%			20%			0
RCR	RCR:Room Cavity Ratio						Coefficients of Utilization(CU)									
0.0	1.08	1.08	1.08	1.00	1.00	1.00	.86	.86	.86	.72	.72	.72	.60	.60	.60	.54
1.0	.89	.83	.79	.82	.77	.73	.69	.66	.62	.58	.55	.52	.47	.45	.43	.38
2.0	.75	.68	.61	.70	.63	.57	.59	.53	.49	.48	.44	.41	.39	.36	.33	.28
3.0	.65	.56	.49	.60	.52	.46	.50	.44	.39	.42	.37	.33	.33	.30	.27	.22
4.0	.57	.48	.41	.52	.44	.38	.44	.38	.32	.36	.31	.27	.29	.25	.22	.18
5.0	.50	.41	.34	.46	.38	.32	.39	.32	.27	.32	.27	.23	.26	.22	.18	.15
6.0	.45	.36	.29	.41	.33	.27	.35	.28	.23	.29	.24	.20	.23	.19	.16	.13
7.0	.40	.31	.25	.37	.29	.23	.31	.25	.20	.26	.21	.17	.21	.17	.14	.11
8.0	.36	.28	.22	.33	.26	.20	.28	.22	.18	.24	.19	.15	.19	.15	.12	.10
9.0	.33	.25	.19	.30	.23	.18	.26	.20	.15	.22	.17	.13	.18	.14	.11	.08
10.0	.30	.22	.17	.28	.21	.16	.24	.18	.14	.20	.15	.12	.16	.12	.10	.07



C Range: 0 - 360DEG  
 C Interval: 15.0DEG  
 Test Speed: HIGH  
 Temperature:24.5°C  
 Operators:Dingmin Zhang  
 Test Date:2025-12-05

γ Range: 0 - 180DEG  
 γ Interval: 0.5DEG  
 Test System:EVERFINE GO-R5000\_V2 SYSTEM V2.00.463  
 Humidity:65.0%  
 Test Distance:30.000m [K=0.9305]  
 Remarks:

WEC AND CCEC

Test:U:120.17V I:0.9473A P:113.31W PF:0.9954 Freq:60.01Hz								
Lamp Flux:1094.02x1 lm								
NAME:			TYPE:			WEIGHT:		
SPEC.:			DIM.:			SERIAL No.:		
MFR.:			SUR.:			Shielding Angle:		

ρ <sub>cc</sub>	80%			70%			50%			30%			10%			0
ρ <sub>w</sub>	50%	30%	10%	50%	30%	10%	50%	30%	10%	50%	30%	10%	50%	30%	10%	0
ρ <sub>fc</sub>	20%			20%			20%			20%			20%			0
RCR	RCR:Room Cavity Ratio						Wall Exitance Coefficients(WEC)									
0.0																
1.0	.388	.221	.070	.367	.209	.066	.327	.188	.060	.291	.168	.054	.257	.149	.048	
2.0	.329	.181	.055	.310	.171	.053	.274	.152	.047	.241	.135	.042	.210	.119	.037	
3.0	.290	.154	.046	.272	.146	.044	.239	.130	.039	.209	.114	.035	.180	.100	.031	
4.0	.260	.135	.040	.244	.128	.038	.213	.113	.034	.185	.100	.030	.159	.086	.026	
5.0	.236	.120	.035	.221	.113	.033	.193	.100	.030	.167	.088	.026	.143	.076	.023	
6.0	.215	.108	.031	.202	.102	.029	.176	.090	.026	.152	.079	.023	.130	.068	.020	
7.0	.198	.098	.028	.186	.093	.026	.162	.082	.024	.140	.072	.021	.119	.062	.018	
8.0	.184	.090	.025	.172	.085	.024	.150	.075	.021	.129	.066	.019	.110	.056	.016	
9.0	.171	.083	.023	.160	.078	.022	.140	.069	.020	.121	.060	.017	.102	.052	.015	
10.0	.160	.077	.021	.150	.072	.020	.131	.064	.018	.113	.056	.016	.096	.048	.014	

ρ <sub>cc</sub>	80%			70%			50%			30%			10%			0
ρ <sub>w</sub>	50%	30%	10%	50%	30%	10%	50%	30%	10%	50%	30%	10%	50%	30%	10%	0
ρ <sub>fc</sub>	20%			20%			20%			20%			20%			0
RCR	RCR:Room Cavity Ratio						Ceiling Cavity Exitance Coefficients(CCEC)									
0.0	.541	.541	.541	.462	.462	.462	.315	.315	.315	.181	.181	.181	.058	.058	.058	
1.0	.539	.508	.481	.461	.436	.414	.315	.300	.286	.181	.174	.167	.058	.056	.054	
2.0	.533	.487	.449	.456	.419	.388	.313	.290	.271	.180	.169	.159	.058	.055	.052	
3.0	.526	.472	.429	.451	.407	.372	.309	.283	.261	.179	.165	.154	.057	.054	.050	
4.0	.518	.460	.415	.445	.397	.361	.306	.277	.254	.177	.162	.150	.057	.053	.049	
5.0	.511	.451	.406	.439	.390	.354	.302	.272	.250	.175	.160	.148	.056	.052	.049	
6.0	.504	.443	.400	.433	.384	.348	.299	.269	.246	.173	.158	.146	.056	.052	.048	
7.0	.497	.437	.395	.428	.379	.344	.296	.266	.244	.172	.157	.145	.055	.051	.048	
8.0	.491	.432	.392	.423	.375	.341	.292	.263	.242	.170	.155	.144	.055	.051	.048	
9.0	.485	.428	.389	.418	.371	.339	.289	.261	.241	.169	.154	.144	.055	.051	.048	
10.0	.479	.424	.387	.413	.368	.337	.287	.259	.240	.167	.153	.143	.054	.050	.047	

C Range: 0 - 360DEG  
 C Interval: 15.0DEG  
 Test Speed: HIGH  
 Temperature:24.5°C  
 Operators:Dingmin Zhang  
 Test Date:2025-12-05

γ Range: 0 - 180DEG  
 γ Interval: 0.5DEG  
 Test System:EVERFINE GO-R5000\_V2 SYSTEM V2.00.463  
 Humidity:65.0%  
 Test Distance:30.000m [K=0.9305]  
 Remarks:

UGR(Unified Glare Rating) Table

Test:U:120.17V I:0.9473A P:113.31W PF:0.9954 Freq:60.01Hz										
Lamp Flux:1094.02x1 lm										
NAME:			TYPE:			WEIGHT:				
SPEC.:			DIM.:			SERIAL No.:				
MFR.:			SUR.:			Shielding Angle:				
ceiling/cavity	0.7	0.7	0.5	0.5	0.3	0.7	0.7	0.5	0.5	0.3
walls	0.5	0.3	0.5	0.3	0.3	0.5	0.3	0.5	0.3	0.3
working plane	0.2	0.2	0.2	0.2	0.2	0.2	0.2	0.2	0.2	0.2
Room dimensions	Viewed crosswise					Viewed endwise				
x = 2H y = 2H	12.4	13.5	13.2	14.3	15.4	11.5	12.6	12.3	13.5	14.5
3H	15.3	16.3	16.2	17.2	18.3	14.8	15.8	15.6	16.6	17.8
4H	17.0	17.9	17.9	18.8	19.9	16.6	17.6	17.5	18.5	19.6
6H	18.9	19.8	19.8	20.7	21.9	18.7	19.6	19.6	20.5	21.7
8H	20.1	20.9	20.9	21.8	23.0	19.9	20.7	20.8	21.6	22.8
12H	21.4	22.2	22.3	23.1	24.3	21.2	22.0	22.1	22.9	24.1
4H 2H	13.3	14.2	14.2	15.1	16.2	12.7	13.6	13.6	14.5	15.7
3H	16.5	17.3	17.3	18.2	19.4	15.9	16.8	16.8	17.7	18.8
4H	18.2	18.9	19.1	19.9	21.1	17.9	18.6	18.8	19.5	20.7
6H	20.1	20.8	21.0	21.7	22.9	20.1	20.7	21.0	21.7	22.9
8H	21.2	21.8	22.2	22.8	24.0	21.3	21.9	22.3	22.9	24.1
12H	22.6	23.2	23.6	24.2	25.4	22.7	23.3	23.7	24.3	25.5
8H 4H	19.0	19.6	19.9	20.5	21.8	18.7	19.3	19.6	20.3	21.5
6H	21.2	21.7	22.1	22.7	23.9	21.1	21.6	22.0	22.6	23.8
8H	22.4	22.9	23.4	23.9	25.1	22.4	22.9	23.4	23.9	25.2
12H	23.9	24.3	24.8	25.3	26.6	24.1	24.5	25.1	25.5	26.8
12H 4H	19.1	19.7	20.1	20.7	21.9	18.9	19.5	19.9	20.5	21.7
6H	21.5	22.0	22.5	23.0	24.3	21.4	21.9	22.4	22.9	24.2
8H	22.9	23.3	23.9	24.3	25.6	22.9	23.3	23.9	24.3	25.6
Variations with the observer position at spacings(CIE Pub.117):										
S = 1.0H	+ 0.1 / - 0.1					+ 0.1 / - 0.1				
1.5H	+ 0.2 / - 0.2					+ 0.2 / - 0.2				
2.0H	+ 0.3 / - 0.3					+ 0.3 / - 0.4				

CIE Pub.117, 1094 lm Total Lamp Luminous Flux Corrected (8log(F/F0) = 0.3)  
 Area: 0.2921 m2

C Range: 0 - 360DEG	γ Range: 0 - 180DEG
C Interval: 15.0DEG	γ Interval: 0.5DEG
Test Speed: HIGH	Test System:EVERFINE GO-R5000_V2 SYSTEM V2.00.463
Temperature:24.5°C	Humidity:65.0%
Operators:Dingmin Zhang	Test Distance:30.000m [K=0.9305]
Test Date:2025-12-05	Remarks:

UTILIZATION FACTORS TABLE

Test:U:120.17V I:0.9473A P:113.31W PF:0.9954 Freq:60.01Hz Lamp Flux:1094.02x1 lm		
NAME:	TYPE:	WEIGHT:
SPEC.:	DIM.:	SERIAL No.:
MFR.:	SUR.:	Shielding Angle:

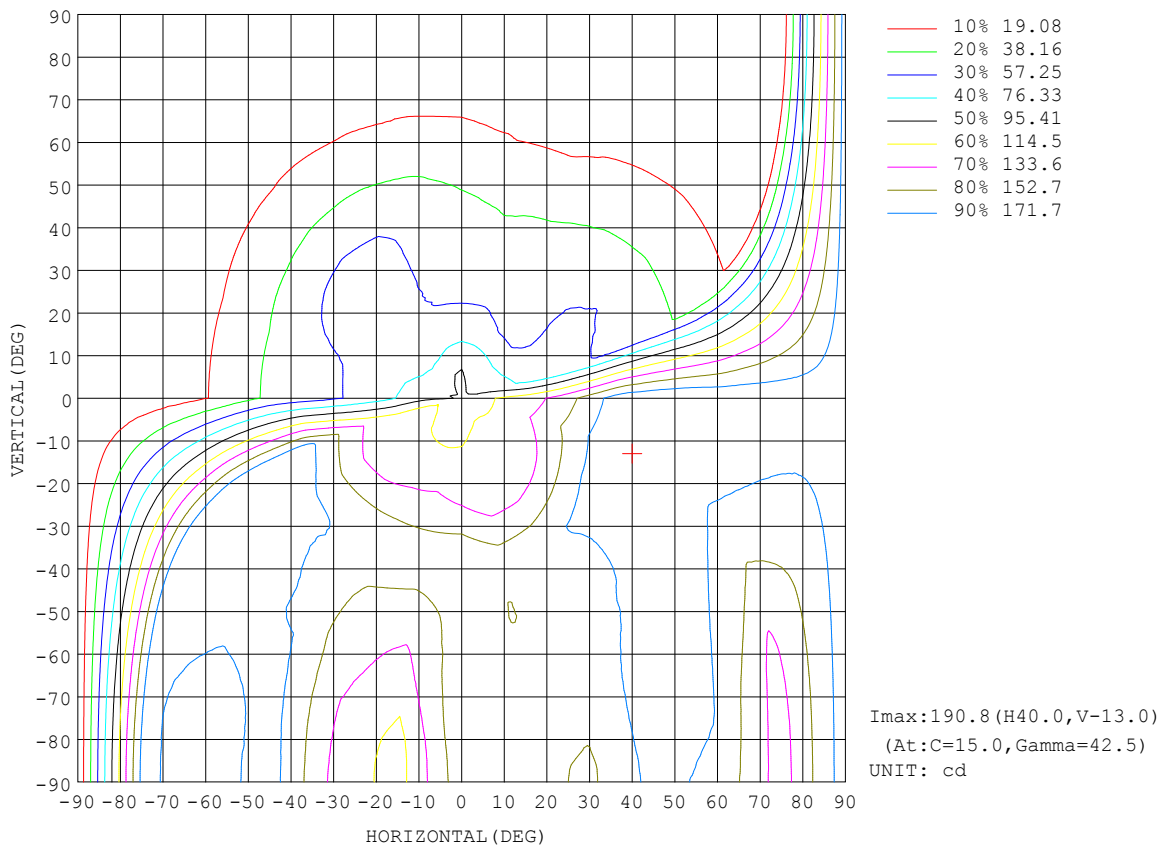
REFLECTANCE										
Ceiling	0.8	0.8	0.8	0.7	0.7	0.7	0.5	0.5	0.5	0
Walls	0.7	0.5	0.3	0.7	0.5	0.3	0.7	0.5	0.3	0
Working plane	0.2	0.2	0.2	0.2	0.2	0.2	0.2	0.2	0.2	0
ROOM INDEX	UTILIZATION FACTORS (PERCENT) k(RI) x RCR = 5									
k = 0.60	38	26	19	36	25	18	33	23	17	10
0.80	47	34	26	44	32	25	40	29	23	13
1.00	55	41	32	51	39	31	45	37	28	17
1.25	61	48	39	57	45	37	50	40	33	20
1.50	67	54	44	62	50	42	54	45	38	23
2.00	74	62	53	69	58	50	60	51	45	27
2.50	79	68	59	74	64	56	63	55	49	30
3.00	83	73	65	77	68	61	66	59	53	33
4.00	88	79	72	82	74	67	70	64	59	36
5.00	91	84	77	85	78	72	72	67	63	38
ROOM INDEX	UF(total)									Direct
According to DIN EN 13032-2 2004			Suspended				SHRNOM = 1.25			

C Range: 0 - 360DEG  
 C Interval: 15.0DEG  
 Test Speed: HIGH  
 Temperature:24.5°C  
 Operators:Dingmin Zhang  
 Test Date:2025-12-05

γ Range: 0 - 180DEG  
 γ Interval: 0.5DEG  
 Test System:EVERFINE GO-R5000\_V2 SYSTEM V2.00.463  
 Humidity:65.0%  
 Test Distance:30.000m [K=0.9305]  
 Remarks:

ISOCANDELA DIAGRAM

Test:U:120.17V I:0.9473A P:113.31W PF:0.9954 Freq:60.01Hz Lamp Flux:1094.02x1 lm		
NAME:	TYPE:	WEIGHT:
SPEC.:	DIM.:	SERIAL No.:
MFR.:	SUR.:	Shielding Angle:



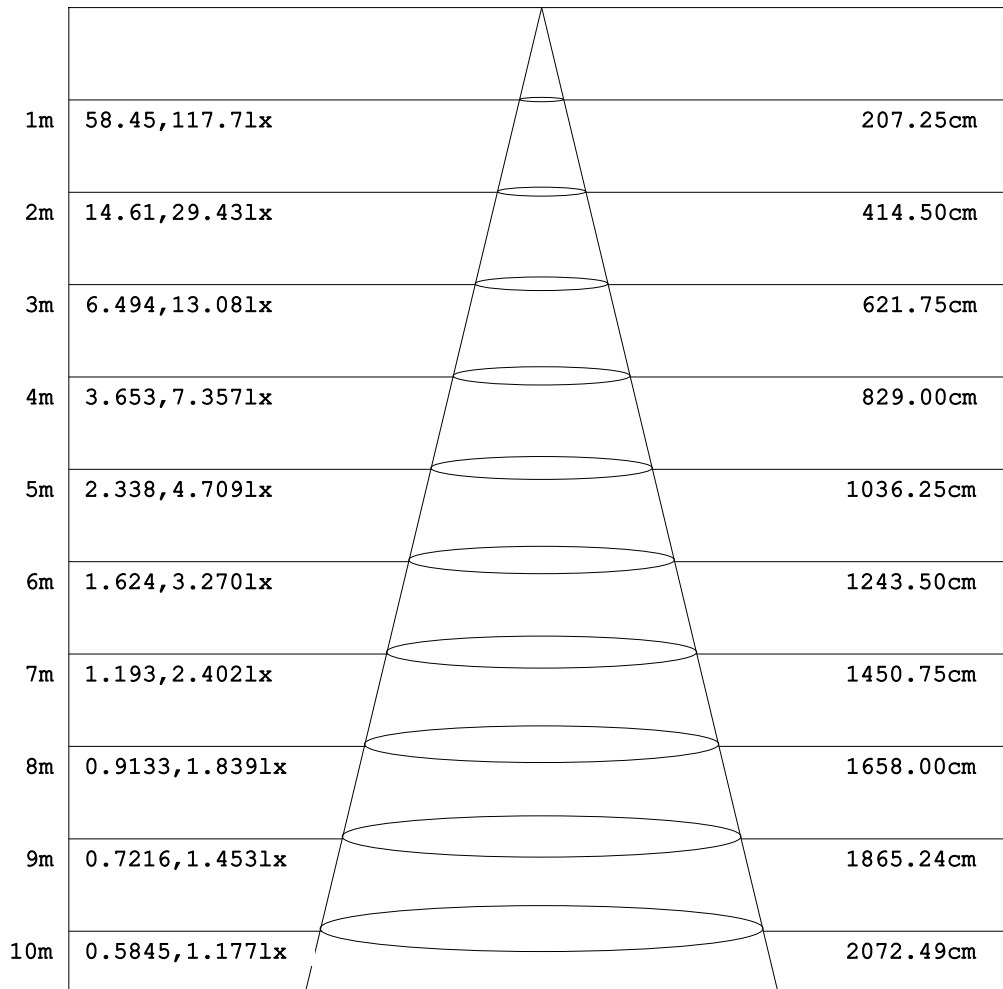
C Range: 0 - 360DEG  
C Interval: 15.0DEG  
Test Speed: HIGH  
Temperature:24.5°C  
Operators:Dingmin Zhang  
Test Date:2025-12-05

γ Range: 0 - 180DEG  
γ Interval: 0.5DEG  
Test System:EVERFINE GO-R5000\_V2 SYSTEM V2.00.463  
Humidity:65.0%  
Test Distance:30.000m [K=0.9305]  
Remarks:

**AAI Figure**

Test:U:120.17V I:0.9473A P:113.31W PF:0.9954 Freq:60.01Hz Lamp Flux:1094.02x1 lm		
NAME:	TYPE:	WEIGHT:
SPEC.:	DIM.:	SERIAL No.:
MFR.:	SUR.:	Shielding Angle:

Flux out:203.9 lm



Height                      Eavg, Emax                      Angle:92.04deg                      Diameter

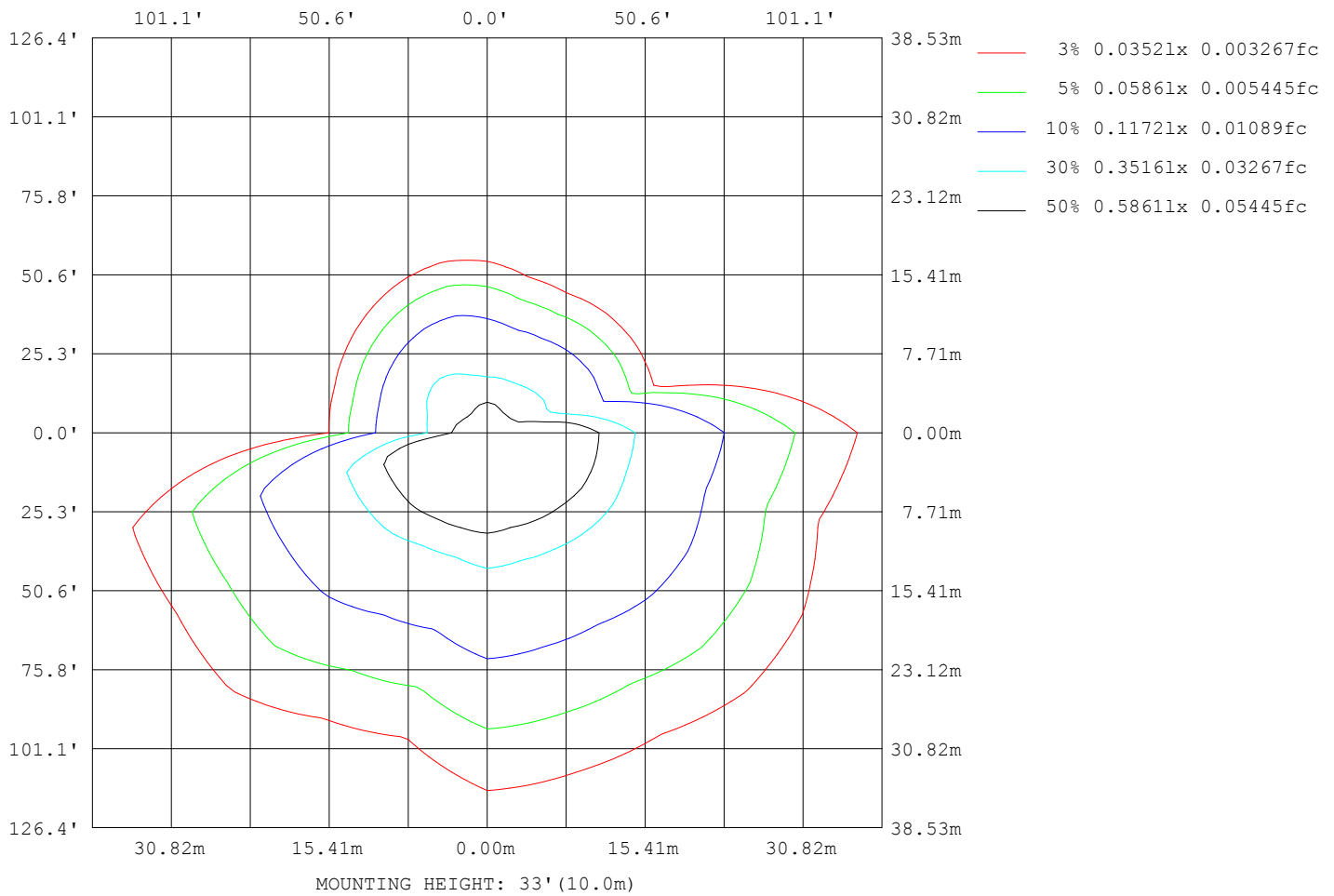
**Note:**The Curves indicate the illuminated area and the average illumination when the luminaire is at different distance.

C Range: 0 - 360DEG  
 C Interval: 15.0DEG  
 Test Speed: HIGH  
 Temperature:24.5°C  
 Operators:Dingmin Zhang  
 Test Date:2025-12-05

γ Range: 0 - 180DEG  
 γ Interval: 0.5DEG  
 Test System:EVERFINE GO-R5000\_V2 SYSTEM V2.00.463  
 Humidity:65.0%  
 Test Distance:30.000m [K=0.9305]  
 Remarks:

ISOLUX DIAGRAM

Test:U:120.17V I:0.9473A P:113.31W PF:0.9954 Freq:60.01Hz Lamp Flux:1094.02x1 lm		
NAME:	TYPE:	WEIGHT:
SPEC.:	DIM.:	SERIAL No.:
MFR.:	SUR.:	Shielding Angle:



C Range: 0 - 360DEG  
 C Interval: 15.0DEG  
 Test Speed: HIGH  
 Temperature:24.5°C  
 Operators:Dingmin Zhang  
 Test Date:2025-12-05

γ Range: 0 - 180DEG  
 γ Interval: 0.5DEG  
 Test System:EVERFINE GO-R5000\_V2 SYSTEM V2.00.463  
 Humidity:65.0%  
 Test Distance:30.000m [K=0.9305]  
 Remarks:

## LED Avg.L Report

Test:U:120.17V I:0.9473A P:113.31W PF:0.9954 Freq:60.01Hz Lamp Flux:1094.02x1 lm		
NAME:	TYPE:	WEIGHT:
SPEC.:	DIM.:	SERIAL No.:
MFR.:	SUR.:	Shielding Angle:

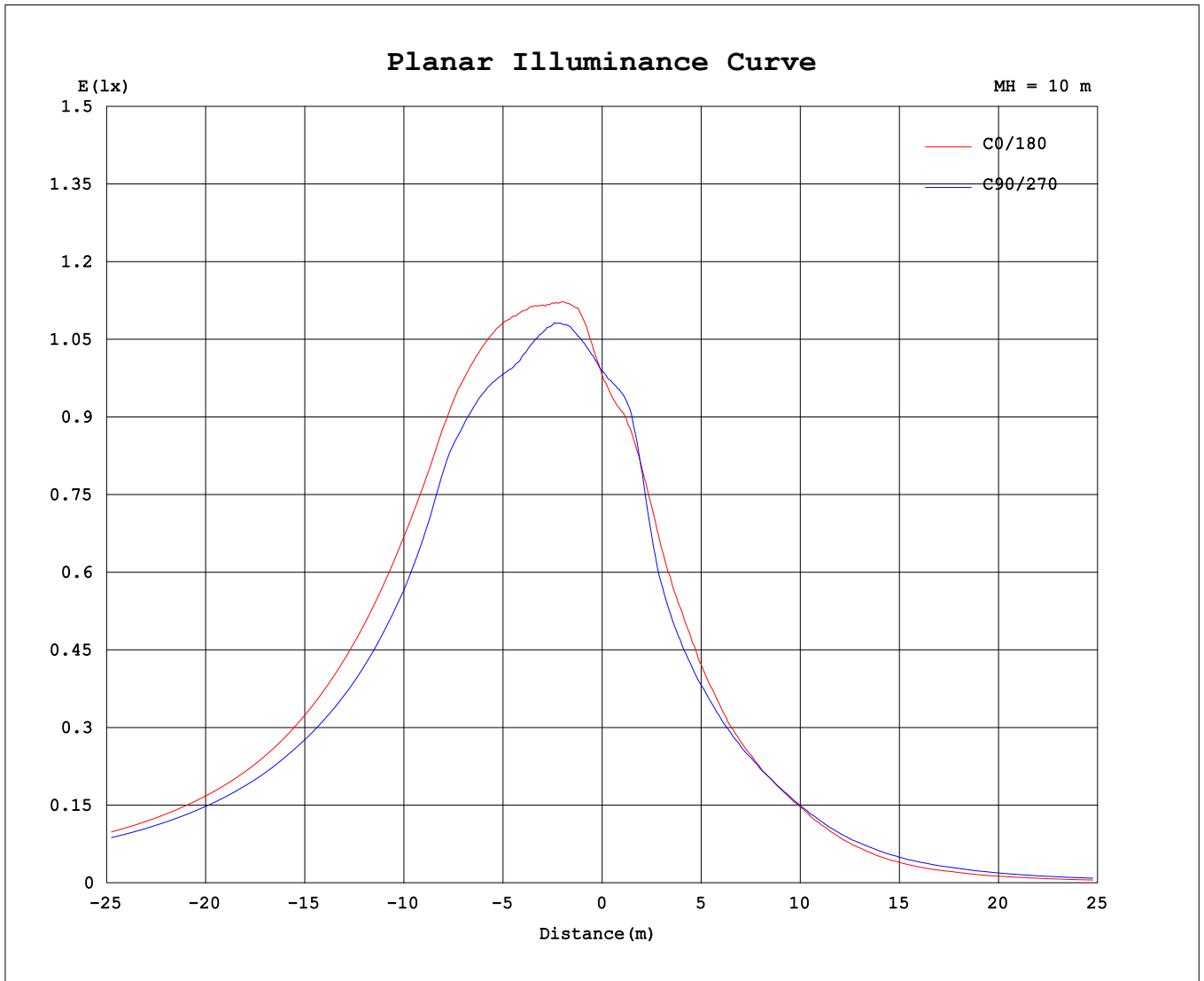
AvgL	cd/m2
L_0~180 (65) av	815
L_0~180 (75) av	1264
L_0~180 (85) av	3640
L_90~270 (65) av	753
L_90~270 (75) av	1188
L_90~270 (85) av	3370
L_45 (65) av	773
L_45 (75) av	1229
L_45 (85) av	3597

Standard: GB/T 29293-2012

C Range: 0 - 360DEG  
C Interval: 15.0DEG  
Test Speed: HIGH  
Temperature:24.5°C  
Operators:Dingmin Zhang  
Test Date:2025-12-05

γ Range: 0 - 180DEG  
γ Interval: 0.5DEG  
Test System:EVERFINE GO-R5000\_V2 SYSTEM V2.00.463  
Humidity:65.0%  
Test Distance:30.000m [K=0.9305]  
Remarks:

Planar Illuminance Curve



C Range: 0 - 360DEG  
C Interval: 15.0DEG  
Test Speed: HIGH  
Temperature: 24.5°C  
Operators: Dingmin Zhang  
Test Date: 2025-12-05

γ Range: 0 - 180DEG  
γ Interval: 0.5DEG  
Test System: EVERFINE GO-R5000\_V2 SYSTEM V2.00.463  
Humidity: 65.0%  
Test Distance: 30.000m [K=0.9305]  
Remarks:

LUMINOUS DISTRIBUTION INTENSITY DATA

Test:U:120.17V I:0.9473A P:113.31W PF:0.9954 Freq:60.01Hz		
Lamp Flux:1094.02x1 lm		
NAME:	TYPE:	WEIGHT:
SPEC.:	DIM.:	SERIAL No.:
MFR.:	SUR.:	Shielding Angle:

Table--1

UNIT: cd

C (DEG) \ γ (DEG)	0	15	30	45	60	75	90	105	120	135	150	165	180	195	210	225	240	255	270
0	98.1	98.6	97.2	98.2	100	101	98.9	98.0	98.1	98.2	99.5	101	98.1	98.6	97.2	98.2	100	101	98.9
5	109	109	110	112	112	109	105	104	105	108	112	113	92.8	94.3	89.6	89.1	92.9	96.1	96.4
10	117	119	121	123	121	117	113	111	113	114	117	119	87.4	86.7	78.4	75.4	79.2	85.7	89.2
15	124	130	126	124	122	119	119	120	118	116	117	119	77.6	72.5	63.4	59.8	61.7	67.1	70.3
20	134	142	133	125	117	119	125	129	125	120	119	126	67.9	63.3	61.3	58.2	57.3	59.0	60.0
25	146	155	146	136	126	124	133	138	136	131	129	137	61.5	59.9	62.9	61.7	58.7	56.3	54.6
30	162	170	162	152	142	138	147	149	149	145	143	153	54.9	56.5	63.1	65.5	60.3	54.4	50.9
35	177	183	178	165	157	151	161	159	160	161	159	170	49.5	52.9	61.5	65.4	60.5	53.4	47.9
40	186	191	184	173	164	157	166	163	165	170	172	180	45.7	48.6	55.7	61.0	59.2	53.0	45.7
45	189	190	184	169	160	153	160	154	157	171	174	180	41.5	42.0	46.6	51.5	53.0	49.9	42.3
50	190	186	183	169	158	152	160	146	150	169	175	183	33.8	33.4	37.1	40.8	43.5	43.1	36.8
55	190	181	182	171	157	153	161	139	144	169	178	185	25.3	25.2	28.4	31.6	34.6	34.8	30.8
60	188	173	181	173	158	155	163	132	140	170	178	185	18.6	18.0	20.7	23.3	26.4	27.6	25.3
65	188	166	180	175	158	158	166	127	138	172	177	185	13.4	12.4	14.4	16.5	19.3	21.0	20.0
70	187	157	178	178	157	159	167	121	136	174	174	184	9.24	8.17	9.42	11.3	13.6	15.5	15.3
75	185	145	176	180	155	160	168	115	133	176	169	181	6.07	5.17	6.00	7.08	8.65	10.6	11.4
80	183	132	174	180	154	160	168	109	131	178	164	178	4.10	2.75	4.09	4.38	5.36	6.68	7.86
85	182	126	170	179	151	160	166	106	130	180	161	176	3.44	1.08	3.42	3.08	2.77	4.11	5.35
90	182	125	167	177	149	160	165	107	129	180	161	176	3.23	1.42	3.50	3.14	2.14	2.91	3.97
95	182	125	166	176	150	159	163	110	129	180	162	176	3.71	3.07	4.01	3.75	2.34	2.96	3.60
100	181	132	164	175	149	158	161	115	131	178	163	177	5.06	4.75	5.59	5.11	3.03	3.51	4.12
105	180	138	163	173	148	157	159	119	132	177	165	177	7.00	6.99	8.09	7.77	4.17	4.86	5.01
110	180	143	163	171	146	154	155	123	133	174	167	178	10.2	9.57	10.9	10.6	6.24	7.09	6.67
115	178	148	162	168	145	151	151	126	134	171	167	176	15.5	13.6	15.5	15.2	8.67	10.7	9.93
120	176	153	163	165	144	149	148	130	136	168	167	174	21.9	17.9	20.1	20.1	11.7	15.8	13.7
125	174	157	164	163	144	149	148	135	138	166	165	172	29.7	23.4	26.1	25.9	14.9	21.4	19.0
130	171	158	165	161	145	147	147	137	140	163	162	167	39.2	27.3	31.6	31.5	19.8	27.9	25.7
135	166	158	165	160	144	147	148	139	143	160	160	164	49.1	33.1	36.9	36.7	25.1	34.3	32.8
140	159	154	160	157	143	144	148	139	144	156	153	157	59.6	39.2	40.7	41.6	29.8	40.0	40.5
145	144	141	146	138	127	125	134	128	134	139	134	138	62.9	44.3	41.0	41.7	31.7	39.5	44.3
150	115	120	119	110	98.3	98.4	111	109	115	112	105	110	50.8	40.0	32.8	31.8	27.3	31.5	36.7
155	86.4	91.5	89.7	84.1	76.3	73.8	84.3	87.0	91.6	85.1	81.9	84.7	34.8	27.2	17.5	18.8	19.3	21.0	23.7
160	67.6	67.2	70.1	69.1	66.4	63.6	66.7	67.6	68.9	67.1	69.2	66.5	17.6	14.0	8.68	14.6	18.4	17.6	14.1
165	52.3	56.7	53.4	55.0	50.6	50.1	53.0	55.2	52.8	48.2	44.8	47.7	9.22	7.85	12.2	17.0	19.6	14.0	8.81
170	28.6	32.6	29.5	25.0	23.7	24.4	27.9	30.1	29.5	23.5	18.7	23.1	3.88	3.67	9.73	10.0	7.48	3.39	1.69
175	10.5	10.6	9.44	8.58	9.28	9.62	10.3	11.2	9.57	6.42	5.31	5.33	0.00	0.00	0.00	0.00	0.00	0.00	0.00
180	0.00	0.00	0.02	0.56	0.85	0.73	0.89	0.92	0.33	0.00	0.00	0.00	0.00	0.00	0.00	0.26	0.17	0.51	0.67

C Range: 0 - 360DEG  
 C Interval: 15.0DEG  
 Test Speed: HIGH  
 Temperature:24.5°C  
 Operators:Dingmin Zhang  
 Test Date:2025-12-05

γ Range: 0 - 180DEG  
 γ Interval: 0.5DEG  
 Test System:EVERFINE GO-R5000\_V2 SYSTEM V2.00.463  
 Humidity:65.0%  
 Test Distance:30.000m [K=0.9305]  
 Remarks:

LUMINOUS DISTRIBUTION INTENSITY DATA

Test:U:120.17V I:0.9473A P:113.31W PF:0.9954 Freq:60.01Hz		
Lamp Flux:1094.02x1 lm		
NAME:	TYPE:	WEIGHT:
SPEC.:	DIM.:	SERIAL No.:
MFR.:	SUR.:	Shielding Angle:

Table--2

UNIT: cd

C (DEG) γ (DEG)	285	300	315	330	345														
0	98.0	98.1	98.2	99.5	101														
5	94.4	92.0	89.6	90.2	94.0														
10	87.1	81.5	77.6	78.7	84.7														
15	67.8	62.7	60.8	65.0	72.2														
20	59.2	55.2	54.8	59.9	65.4														
25	55.0	53.6	55.2	59.6	61.5														
30	51.1	52.0	55.6	59.2	58.3														
35	47.2	49.3	54.4	58.0	55.7														
40	43.0	45.0	50.6	55.5	52.6														
45	37.1	39.3	44.6	50.2	48.5														
50	31.0	32.2	37.8	42.3	41.6														
55	25.4	25.4	30.0	33.4	32.8														
60	20.3	19.5	23.4	25.8	25.8														
65	16.1	14.7	17.6	19.5	19.4														
70	12.6	10.6	13.2	14.3	14.6														
75	9.18	7.83	8.83	10.7	10.8														
80	6.38	5.58	5.97	7.01	8.06														
85	4.06	3.95	4.80	5.38	6.16														
90	2.48	3.03	4.82	5.06	5.94														
95	2.15	3.08	5.48	5.29	6.15														
100	3.75	4.01	6.67	6.37	6.98														
105	5.72	5.75	9.09	8.03	8.96														
110	7.55	8.50	11.6	11.2	11.4														
115	10.8	11.6	16.0	15.5	15.8														
120	14.3	15.9	20.0	20.7	20.8														
125	18.5	20.6	25.8	25.5	28.0														
130	21.2	25.4	30.6	33.6	35.2														
135	21.9	28.7	34.3	39.8	42.9														
140	29.5	30.3	35.0	42.2	49.0														
145	36.0	29.9	34.7	40.7	49.1														
150	35.2	28.2	27.5	30.2	36.3														
155	24.7	20.2	20.1	21.3	25.4														
160	11.5	9.67	12.9	20.5	23.6														
165	7.28	11.9	15.5	19.0	15.7														
170	3.30	6.65	9.22	9.21	6.79														
175	0.00	1.33	2.50	1.73	0.71														
180	0.91	0.83	0.17	0.00	0.00														

C Range: 0 - 360DEG  
 C Interval: 15.0DEG  
 Test Speed: HIGH  
 Temperature:24.5°C  
 Operators:Dingmin Zhang  
 Test Date:2025-12-05

γ Range: 0 - 180DEG  
 γ Interval: 0.5DEG  
 Test System:EVERFINE GO-R5000\_V2 SYSTEM V2.00.463  
 Humidity:65.0%  
 Test Distance:30.000m [K=0.9305]  
 Remarks: