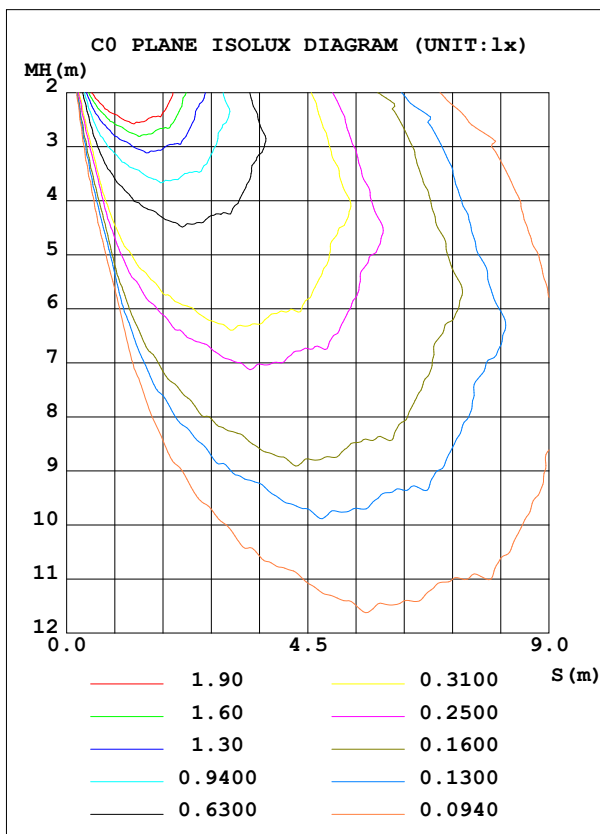
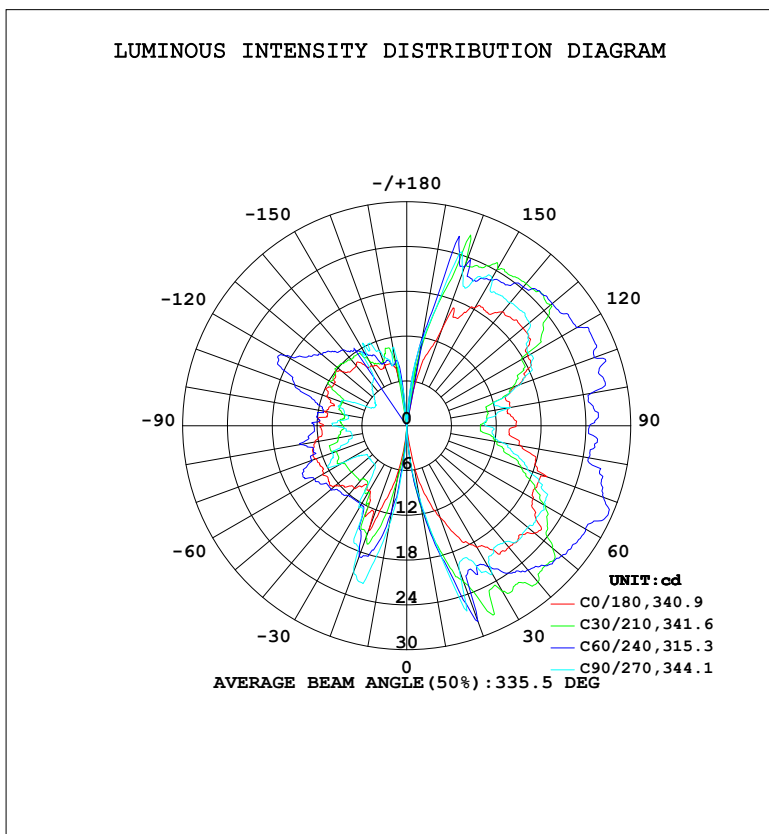


LUMINAIRE PHOTOMETRIC TEST REPORT

Test:U:120.30V I:0.1133A P:13.417W PF:0.9840 Freq:60.01Hz Lamp Flux:181.167x1 lm		
NAME:	TYPE:	WEIGHT:
SPEC.:	DIM.:	SERIAL No.:
MFR.:	SUR.:	Shielding Angle:

DATA OF LAMP		PHOTOMETRIC DATA			
MODEL	HF7180-BK	Imax (cd)	30.55	S/MH (C0/180)	0.00
NOMINAL POWER (W)		LOR (%)	100.0	S/MH (C90/270)	0.00
RATED VOLTAGE (V)	120	TOTAL FLUX (lm)	181.17	η UP, DN (C0-180)	33.9, 35.3
NOMINAL FLUX (lm)	181.167	CIE CLASS	DIFFUSE	η UP, DN (C180-360)	14.5, 16.3
LAMPS INSIDE	1	η up (%)	48.4	CIBSE SHR NOM	0.00
TEST VOLTAGE (V)	120.43	η down (%)	51.6	CIBSE SHR MAX	0.30



C Range: 0 - 360DEG
 C Interval: 15.0DEG
 Test Speed: HIGH
 Temperature: 24.5°C
 Operators: Dingmin Zhang
 Test Date: 2025-12-06

γ Range: 0 - 180DEG
 γ Interval: 0.5DEG
 Test System: EVERFINE GO-R5000_V2 SYSTEM V2.00.463
 Humidity: 65.0%
 Test Distance: 30.000m [K=0.9305]
 Remarks:

ZONAL FLUX DIAGRAM

ZONAL FLUX DIAGRAM:

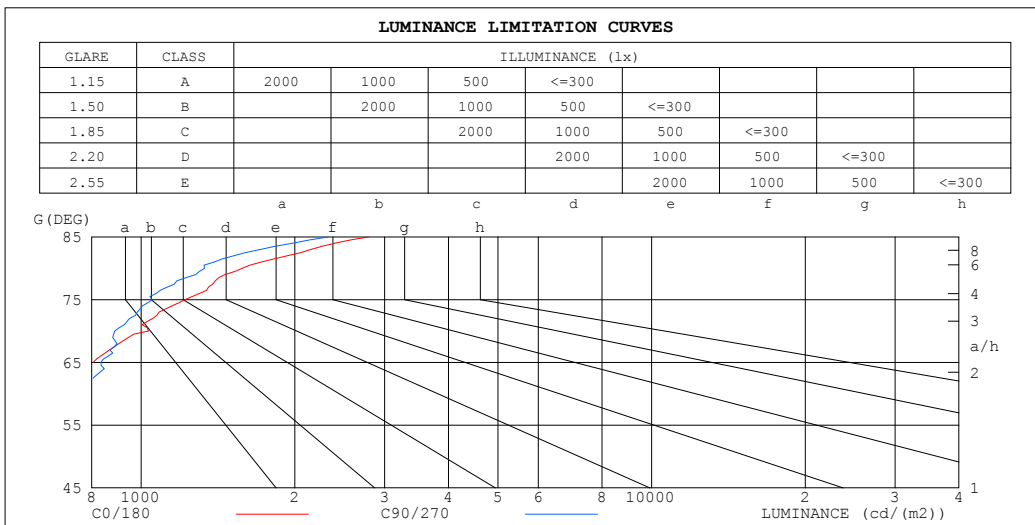
γ	C0	C45	C90	C135	C180	C225	C270	C315	γ	Φ zone	Φ total	%lum, lamp
10	4.892	10.98	9.635	7.472	5.628	8.775	13.41	13.03	0- 10	0.4753	0.4753	0.26,0.26
20	13.13	25.80	20.67	18.20	14.67	17.33	20.74	23.59	10- 20	4.475	4.950	2.73,2.73
30	18.82	22.69	22.93	22.60	10.04	10.88	12.72	12.06	20- 30	8.312	13.26	7.32,7.32
40	21.26	26.21	20.34	22.68	10.96	10.46	6.697	7.031	30- 40	9.812	23.07	12.7,12.7
50	22.35	27.95	21.18	23.77	12.40	13.23	6.613	6.948	40- 50	12.16	35.23	19.4,19.4
60	19.51	28.04	21.26	23.44	12.97	12.89	10.05	7.856	50- 60	14.33	49.56	27.4,27.4
70	19.98	28.32	17.17	29.21	12.90	12.65	10.71	5.115	60- 70	15.54	65.11	35.9,35.9
80	15.49	23.18	13.07	19.37	12.47	12.39	7.450	2.677	70- 80	14.87	79.98	44.1,44.1
90	14.65	24.11	10.64	16.33	11.13	10.97	9.961	2.260	80- 90	13.49	93.46	51.6,51.6
100	13.97	24.02	14.14	16.91	11.20	11.47	8.296	2.428	90-100	12.94	106.4	58.7,58.7
110	16.10	23.19	16.20	20.01	11.39	13.13	9.375	4.763	100-110	13.67	120.1	66.3,66.3
120	18.75	24.11	19.00	25.36	11.22	14.73	4.939	6.529	110-120	14.76	134.8	74.4,74.4
130	20.34	24.78	21.43	24.94	11.29	13.49	5.692	6.127	120-130	14.03	148.9	82.2,82.2
140	19.93	24.86	21.60	24.53	10.55	11.97	7.366	5.860	130-140	12.11	161.0	88.8,88.8
150	18.26	24.02	22.77	22.93	9.208	10.71	10.80	6.023	140-150	9.544	170.5	94.1,94.1
160	13.76	22.69	21.68	17.89	8.542	9.124	10.55	8.048	150-160	6.723	177.2	97.8,97.8
170	4.692	11.36	11.40	6.200	6.938	9.994	10.63	10.63	160-170	3.498	180.7	99.8,99.8
180	0	0	0	0	0	0	0	0	170-180	0.4451	181.2	100,100
DEG	LUMINOUS INTENSITY:cd									UNIT:lm		

C Range: 0 - 360DEG
 C Interval: 15.0DEG
 Test Speed: HIGH
 Temperature:24.5°C
 Operators:Dingmin Zhang
 Test Date:2025-12-06

γ Range: 0 - 180DEG
 γ Interval: 0.5DEG
 Test System:EVERFINE GO-R5000_V2 SYSTEM V2.00.463
 Humidity:65.0%
 Test Distance:30.000m [K=0.9305]
 Remarks:

LUMINANCE LIMITATION CURVES

Test:U:120.30V I:0.1133A P:13.417W PF:0.9840 Freq:60.01Hz Lamp Flux:181.167x1 lm		
NAME:	TYPE:	WEIGHT:
SPEC.:	DIM.:	SERIAL No.:
MFR.:	SUR.:	Shielding Angle:



LUMINANCE cd/(m2)		
G (DEG)	C0/180	C90/270
85	2787	2327
80	1578	1331
75	1218	1052
70	1033	888
65	806	834
60	690	752
55	645	656
50	615	583
45	532	536

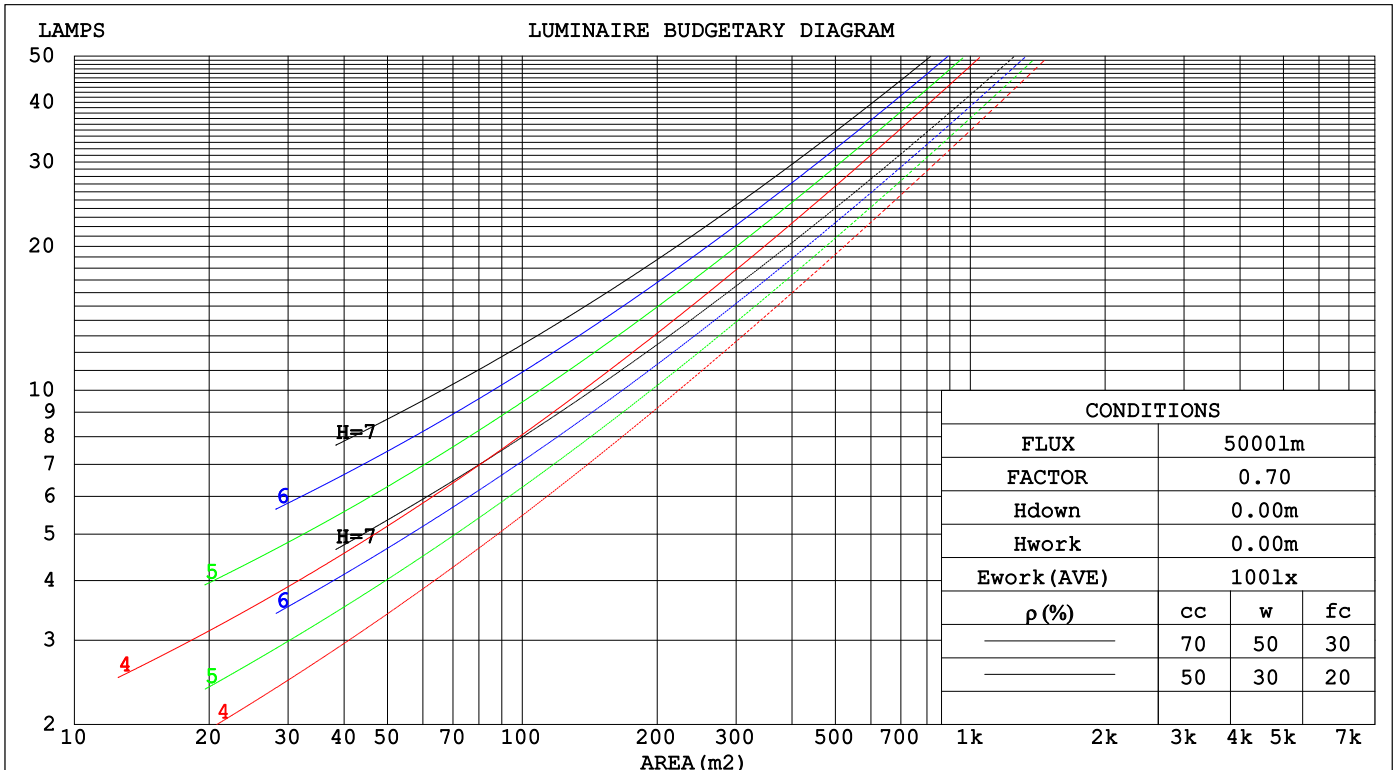
C Range: 0 - 360DEG
 C Interval: 15.0DEG
 Test Speed: HIGH
 Temperature: 24.5°C
 Operators: Dingmin Zhang
 Test Date: 2025-12-06

γ Range: 0 - 180DEG
 γ Interval: 0.5DEG
 Test System: EVERFINE GO-R5000_V2 SYSTEM V2.00.463
 Humidity: 65.0%
 Test Distance: 30.000m [K=0.9305]
 Remarks:

CU AND LUMINAIRE BUDGETARY ESTIMATE DIAGRAM

Test:U:120.30V I:0.1133A P:13.417W PF:0.9840 Freq:60.01Hz		
Lamp Flux:181.167x1 lm		
NAME:	TYPE:	WEIGHT:
SPEC.:	DIM.:	SERIAL No.:
MFR.:	SUR.:	Shielding Angle:

pcc	80%			70%			50%			30%			10%			0
pw	50%	30%	10%	50%	30%	10%	50%	30%	10%	50%	30%	10%	50%	30%	10%	0
pfc	20%			20%			20%			20%			20%			0
RCR	RCR:Room Cavity Ratio						Coefficients of Utilization(CU)									
0.0	1.08	1.08	1.08	.99	.99	.99	.84	.84	.84	.70	.70	.70	.58	.58	.58	.52
1.0	.88	.83	.78	.81	.77	.72	.68	.65	.61	.56	.53	.51	.45	.43	.41	.36
2.0	.75	.67	.61	.69	.62	.56	.58	.52	.48	.47	.43	.40	.37	.34	.32	.27
3.0	.65	.56	.49	.59	.52	.45	.50	.43	.38	.40	.36	.32	.32	.28	.25	.21
4.0	.56	.47	.40	.52	.44	.37	.43	.37	.32	.35	.30	.26	.28	.24	.21	.17
5.0	.50	.40	.34	.46	.37	.31	.38	.32	.27	.31	.26	.22	.24	.21	.17	.14
6.0	.44	.35	.29	.41	.33	.27	.34	.27	.23	.28	.23	.19	.22	.18	.15	.12
7.0	.40	.31	.25	.36	.29	.23	.31	.24	.19	.25	.20	.16	.20	.16	.13	.10
8.0	.36	.27	.21	.33	.25	.20	.28	.21	.17	.23	.18	.14	.18	.14	.11	.09
9.0	.32	.24	.19	.30	.23	.18	.25	.19	.15	.21	.16	.12	.17	.13	.10	.08
10.0	.30	.22	.17	.27	.20	.16	.23	.17	.13	.19	.14	.11	.15	.11	.09	.07



C Range: 0 - 360DEG
 C Interval: 15.0DEG
 Test Speed: HIGH
 Temperature:24.5°C
 Operators:Dingmin Zhang
 Test Date:2025-12-06

γ Range: 0 - 180DEG
 γ Interval: 0.5DEG
 Test System:EVERFINE GO-R5000_V2 SYSTEM V2.00.463
 Humidity:65.0%
 Test Distance:30.000m [K=0.9305]
 Remarks:

WEC AND CCEC

Test:U:120.30V I:0.1133A P:13.417W PF:0.9840 Freq:60.01Hz									
Lamp Flux:181.167x1 lm									
NAME:			TYPE:			WEIGHT:			
SPEC.:			DIM.:			SERIAL No.:			
MFR.:			SUR.:			Shielding Angle:			

ρ _{cc}	80%			70%			50%			30%			10%			0
ρ _w	50%	30%	10%	50%	30%	10%	50%	30%	10%	50%	30%	10%	50%	30%	10%	0
ρ _{fc}	20%			20%			20%			20%			20%			0
RCR	RCR:Room Cavity Ratio						Wall Exitance Coefficients(WEC)									
0.0																
1.0	.383	.218	.069	.361	.206	.065	.320	.184	.059	.282	.163	.052	.248	.144	.046	
2.0	.327	.179	.055	.307	.169	.052	.270	.150	.047	.235	.132	.041	.203	.115	.036	
3.0	.289	.154	.046	.270	.145	.044	.236	.128	.039	.205	.112	.034	.175	.097	.030	
4.0	.259	.135	.040	.242	.127	.037	.211	.112	.033	.182	.098	.029	.154	.084	.026	
5.0	.235	.120	.035	.220	.113	.033	.191	.099	.029	.164	.086	.026	.139	.074	.022	
6.0	.215	.108	.031	.201	.101	.029	.174	.089	.026	.149	.078	.023	.126	.066	.020	
7.0	.198	.098	.028	.185	.092	.026	.160	.081	.023	.137	.070	.020	.115	.060	.018	
8.0	.183	.090	.025	.171	.084	.024	.148	.074	.021	.127	.064	.019	.107	.055	.016	
9.0	.171	.083	.023	.160	.078	.022	.138	.068	.019	.118	.059	.017	.099	.050	.015	
10.0	.160	.077	.021	.149	.072	.020	.129	.063	.018	.110	.055	.016	.093	.047	.013	

ρ _{cc}	80%			70%			50%			30%			10%			0
ρ _w	50%	30%	10%	50%	30%	10%	50%	30%	10%	50%	30%	10%	50%	30%	10%	0
ρ _{fc}	20%			20%			20%			20%			20%			0
RCR	RCR:Room Cavity Ratio						Ceiling Cavity Exitance Coefficients(CCEC)									
0.0	.559	.559	.559	.478	.478	.478	.326	.326	.326	.187	.187	.187	.060	.060	.060	
1.0	.557	.527	.500	.477	.453	.431	.326	.311	.298	.188	.180	.173	.060	.058	.056	
2.0	.551	.506	.468	.472	.436	.405	.324	.301	.282	.187	.175	.165	.060	.057	.054	
3.0	.544	.491	.448	.467	.423	.388	.320	.294	.272	.185	.172	.161	.059	.056	.053	
4.0	.537	.479	.435	.461	.414	.378	.317	.289	.266	.183	.169	.157	.059	.055	.052	
5.0	.530	.470	.426	.455	.407	.371	.314	.284	.262	.182	.167	.155	.059	.054	.051	
6.0	.523	.463	.419	.450	.401	.365	.310	.281	.258	.180	.165	.154	.058	.054	.051	
7.0	.517	.457	.415	.444	.396	.361	.307	.278	.256	.178	.164	.152	.058	.054	.050	
8.0	.510	.452	.411	.439	.392	.359	.304	.275	.254	.177	.162	.152	.057	.053	.050	
9.0	.504	.447	.408	.434	.388	.356	.301	.273	.253	.175	.161	.151	.057	.053	.050	
10.0	.499	.443	.406	.430	.385	.354	.298	.271	.252	.174	.160	.150	.056	.053	.050	

C Range: 0 - 360DEG
 C Interval: 15.0DEG
 Test Speed: HIGH
 Temperature:24.5°C
 Operators:Dingmin Zhang
 Test Date:2025-12-06

γ Range: 0 - 180DEG
 γ Interval: 0.5DEG
 Test System:EVERFINE GO-R5000_V2 SYSTEM V2.00.463
 Humidity:65.0%
 Test Distance:30.000m [K=0.9305]
 Remarks:

UGR(Unified Glare Rating) Table

Test:U:120.30V I:0.1133A P:13.417W PF:0.9840 Freq:60.01Hz										
Lamp Flux:181.167x1 lm										
NAME:			TYPE:			WEIGHT:				
SPEC.:			DIM.:			SERIAL No.:				
MFR.:			SUR.:			Shielding Angle:				
ceiling/cavity	0.7	0.7	0.5	0.5	0.3	0.7	0.7	0.5	0.5	0.3
walls	0.5	0.3	0.5	0.3	0.3	0.5	0.3	0.5	0.3	0.3
working plane	0.2	0.2	0.2	0.2	0.2	0.2	0.2	0.2	0.2	0.2
Room dimensions	Viewed crosswise					Viewed endwise				
x = 2H y = 2H	9.5	10.6	10.4	11.5	12.6	10.6	11.7	11.4	12.5	13.6
3H	11.8	12.8	12.6	13.6	14.8	13.0	13.9	13.8	14.8	16.0
4H	13.1	14.1	14.0	15.0	16.1	14.1	15.0	15.0	15.9	17.1
6H	14.6	15.5	15.5	16.4	17.6	15.3	16.2	16.2	17.1	18.3
8H	15.5	16.3	16.4	17.2	18.4	15.9	16.8	16.8	17.7	18.9
12H	16.4	17.2	17.4	18.2	19.4	16.7	17.5	17.6	18.4	19.6
4H 2H	11.0	11.9	11.9	12.8	14.0	11.8	12.7	12.7	13.6	14.8
3H	13.1	13.9	14.0	14.9	16.1	14.6	15.4	15.5	16.3	17.5
4H	14.3	15.1	15.3	16.0	17.3	16.0	16.7	16.9	17.6	18.9
6H	15.8	16.4	16.7	17.4	18.7	17.3	17.9	18.2	18.9	20.2
8H	16.6	17.2	17.6	18.2	19.5	18.0	18.6	18.9	19.6	20.8
12H	17.6	18.2	18.6	19.2	20.5	18.7	19.3	19.7	20.3	21.6
8H 4H	15.5	16.1	16.5	17.1	18.3	16.7	17.3	17.7	18.3	19.6
6H	17.0	17.5	17.9	18.5	19.8	18.7	19.2	19.7	20.2	21.5
8H	17.8	18.2	18.8	19.2	20.6	19.7	20.1	20.7	21.1	22.5
12H	18.8	19.2	19.8	20.2	21.6	20.7	21.1	21.7	22.1	23.4
12H 4H	15.8	16.4	16.8	17.4	18.7	16.8	17.3	17.8	18.3	19.6
6H	17.6	18.0	18.6	19.0	20.3	19.0	19.4	20.0	20.4	21.7
8H	18.5	18.9	19.5	19.9	21.2	20.2	20.6	21.3	21.7	23.0
Variations with the observer position at spacings(CIE Pub.117):										
S = 1.0H	+ 0.1 / - 0.1					+ 0.1 / - 0.1				
1.5H	+ 0.2 / - 0.2					+ 0.2 / - 0.3				
2.0H	+ 0.3 / - 0.3					+ 0.3 / - 0.4				

CIE Pub.117, 181.2 lm Total Lamp Luminous Flux Corrected (8log(F/F0) = -5.9)
 Area: 0.05655 m2

C Range: 0 - 360DEG	γ Range: 0 - 180DEG
C Interval: 15.0DEG	γ Interval: 0.5DEG
Test Speed: HIGH	Test System:EVERFINE GO-R5000_V2 SYSTEM V2.00.463
Temperature:24.5°C	Humidity:65.0%
Operators:Dingmin Zhang	Test Distance:30.000m [K=0.9305]
Test Date:2025-12-06	Remarks:

UTILIZATION FACTORS TABLE

Test:U:120.30V I:0.1133A P:13.417W PF:0.9840 Freq:60.01Hz Lamp Flux:181.167x1 lm		
NAME:	TYPE:	WEIGHT:
SPEC.:	DIM.:	SERIAL No.:
MFR.:	SUR.:	Shielding Angle:

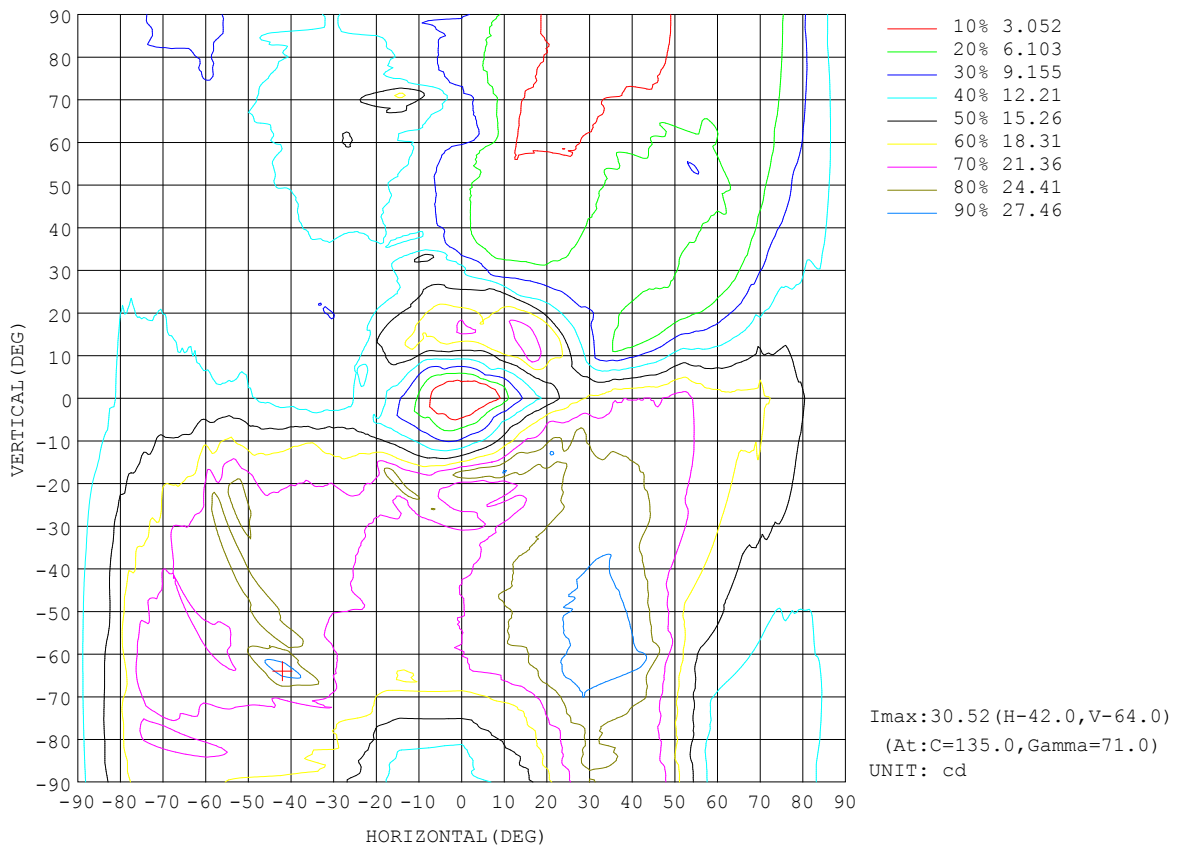
REFLECTANCE										
Ceiling	0.8	0.8	0.8	0.7	0.7	0.7	0.5	0.5	0.5	0
Walls	0.7	0.5	0.3	0.7	0.5	0.3	0.7	0.5	0.3	0
Working plane	0.2	0.2	0.2	0.2	0.2	0.2	0.2	0.2	0.2	0
ROOM INDEX	UTILIZATION FACTORS (PERCENT) k(RI) x RCR = 5									
k = 0.60	38	26	19	36	24	18	32	22	17	9
0.80	47	33	25	44	32	24	39	28	22	12
1.00	54	40	32	50	38	30	44	36	27	16
1.25	61	47	38	57	45	36	49	39	33	19
1.50	66	53	44	61	50	41	53	44	37	21
2.00	74	62	53	68	58	50	58	50	44	26
2.50	79	68	59	73	63	55	62	54	48	28
3.00	83	73	64	77	68	60	65	58	52	31
4.00	88	79	72	81	74	67	69	63	58	34
5.00	91	84	77	84	78	72	71	66	62	37
ROOM INDEX	UF(total)									Direct
According to DIN EN 13032-2 2004			Suspended				SHRNOM = 1.25			

C Range: 0 - 360DEG
 C Interval: 15.0DEG
 Test Speed: HIGH
 Temperature:24.5°C
 Operators:Dingmin Zhang
 Test Date:2025-12-06

γ Range: 0 - 180DEG
 γ Interval: 0.5DEG
 Test System:EVERFINE GO-R5000_V2 SYSTEM V2.00.463
 Humidity:65.0%
 Test Distance:30.000m [K=0.9305]
 Remarks:

ISOCANDELA DIAGRAM

Test:U:120.30V I:0.1133A P:13.417W PF:0.9840 Freq:60.01Hz Lamp Flux:181.167x1 lm		
NAME:	TYPE:	WEIGHT:
SPEC.:	DIM.:	SERIAL No.:
MFR.:	SUR.:	Shielding Angle:



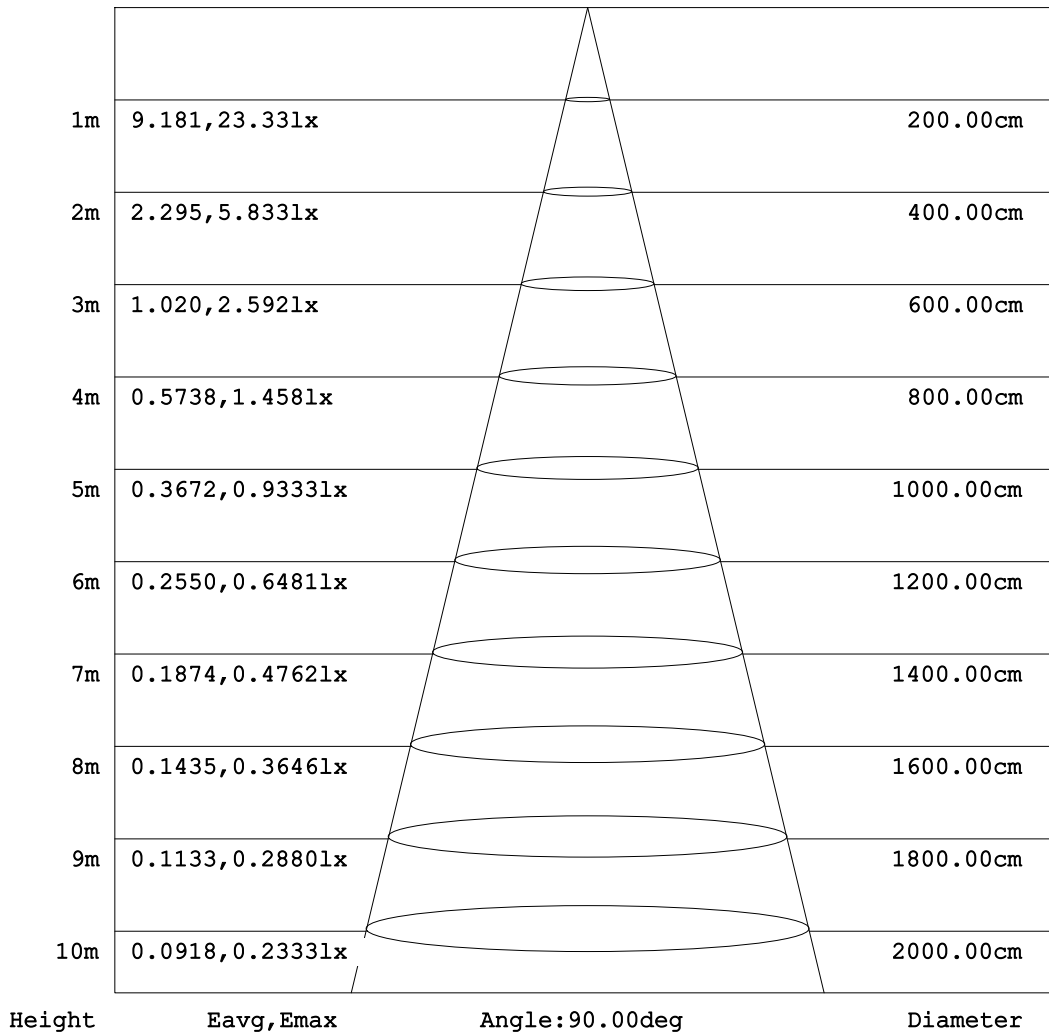
C Range: 0 - 360DEG
 C Interval: 15.0DEG
 Test Speed: HIGH
 Temperature:24.5°C
 Operators:Dingmin Zhang
 Test Date:2025-12-06

γ Range: 0 - 180DEG
 γ Interval: 0.5DEG
 Test System:EVERFINE GO-R5000_V2 SYSTEM V2.00.463
 Humidity:65.0%
 Test Distance:30.000m [K=0.9305]
 Remarks:

AAI Figure

Test:U:120.30V I:0.1133A P:13.417W PF:0.9840 Freq:60.01Hz Lamp Flux:181.167x1 lm		
NAME:	TYPE:	WEIGHT:
SPEC.:	DIM.:	SERIAL No.:
MFR.:	SUR.:	Shielding Angle:

Flux out:28.84 lm



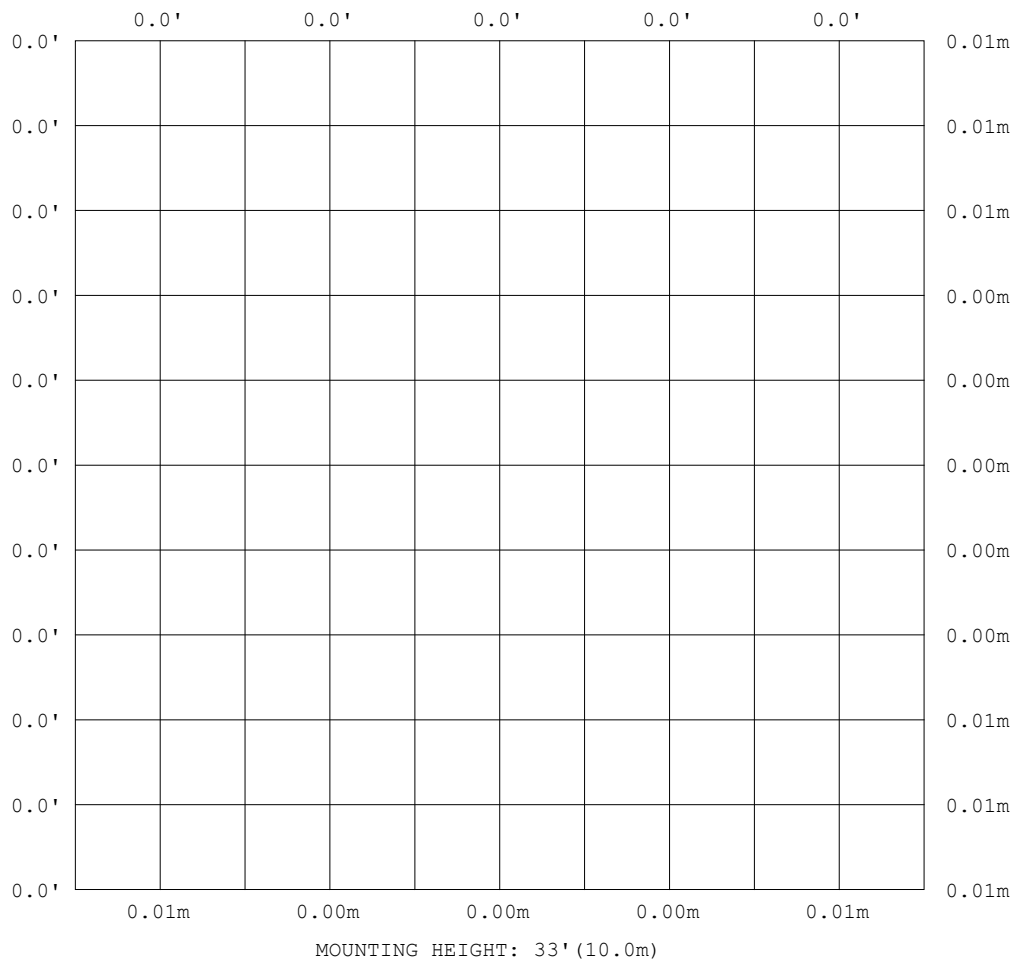
Note:The Curves indicate the illuminated area and the average illumination when the luminaire is at different distance.

C Range: 0 - 360DEG
 C Interval: 15.0DEG
 Test Speed: HIGH
 Temperature:24.5°C
 Operators:Dingmin Zhang
 Test Date:2025-12-06

γ Range: 0 - 180DEG
 γ Interval: 0.5DEG
 Test System:EVERFINE GO-R5000_V2 SYSTEM V2.00.463
 Humidity:65.0%
 Test Distance:30.000m [K=0.9305]
 Remarks:

ISOLUX DIAGRAM

Test:U:120.30V I:0.1133A P:13.417W PF:0.9840 Freq:60.01Hz Lamp Flux:181.167x1 lm		
NAME:	TYPE:	WEIGHT:
SPEC.:	DIM.:	SERIAL No.:
MFR.:	SUR.:	Shielding Angle:



C Range: 0 - 360DEG
 C Interval: 15.0DEG
 Test Speed: HIGH
 Temperature:24.5°C
 Operators:Dingmin Zhang
 Test Date:2025-12-06

γ Range: 0 - 180DEG
 γ Interval: 0.5DEG
 Test System:EVERFINE GO-R5000_V2 SYSTEM V2.00.463
 Humidity:65.0%
 Test Distance:30.000m [K=0.9305]
 Remarks:

LED Avg.L Report

Test:U:120.30V I:0.1133A P:13.417W PF:0.9840 Freq:60.01Hz Lamp Flux:181.167x1 lm		
NAME:	TYPE:	WEIGHT:
SPEC.:	DIM.:	SERIAL No.:
MFR.:	SUR.:	Shielding Angle:

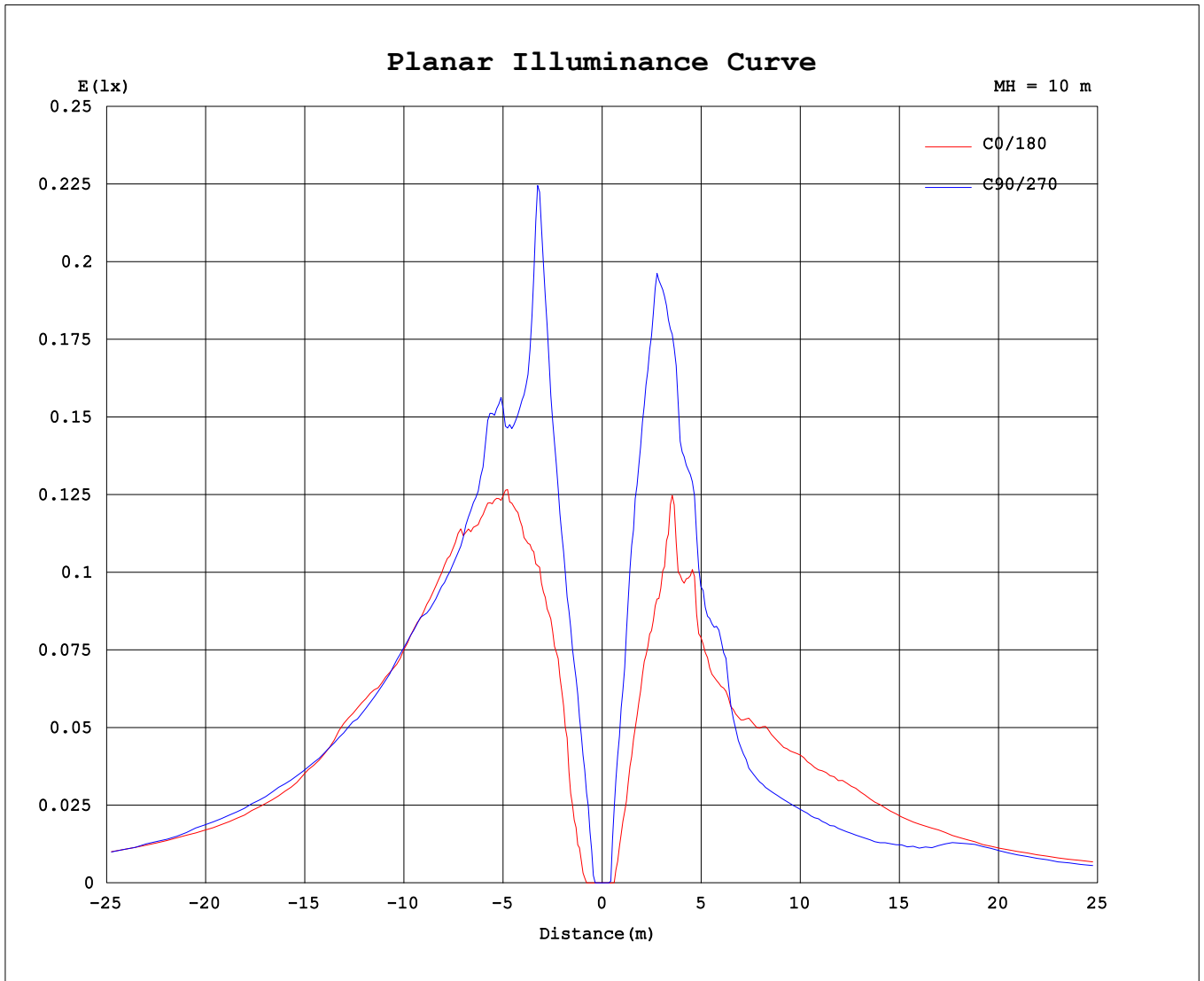
AvgL	cd/m2
L_0~180 (65) av	671
L_0~180 (75) av	1055
L_0~180 (85) av	2548
L_90~270 (65) av	653
L_90~270 (75) av	801
L_90~270 (85) av	1996
L_45 (65) av	767
L_45 (75) av	1099
L_45 (85) av	2886

Standard: GB/T 29293-2012

C Range: 0 - 360DEG
C Interval: 15.0DEG
Test Speed: HIGH
Temperature:24.5°C
Operators:Dingmin Zhang
Test Date:2025-12-06

γ Range: 0 - 180DEG
γ Interval: 0.5DEG
Test System:EVERFINE GO-R5000_V2 SYSTEM V2.00.463
Humidity:65.0%
Test Distance:30.000m [K=0.9305]
Remarks:

Planar Illuminance Curve



C Range: 0 - 360DEG
C Interval: 15.0DEG
Test Speed: HIGH
Temperature: 24.5°C
Operators: Dingmin Zhang
Test Date: 2025-12-06

γ Range: 0 - 180DEG
γ Interval: 0.5DEG
Test System: EVERFINE GO-R5000_V2 SYSTEM V2.00.463
Humidity: 65.0%
Test Distance: 30.000m [K=0.9305]
Remarks:

LUMINOUS DISTRIBUTION INTENSITY DATA

Test:U:120.30V I:0.1133A P:13.417W PF:0.9840 Freq:60.01Hz Lamp Flux:181.167x1 lm		
NAME:	TYPE:	WEIGHT:
SPEC.:	DIM.:	SERIAL No.:
MFR.:	SUR.:	Shielding Angle:

Table--1

UNIT: cd

C (DEG) \ γ (DEG)	0	15	30	45	60	75	90	105	120	135	150	165	180	195	210	225	240	255	270
0	0.00	0.00	0.00	0.00	0.00	0.00	0.00	0.00	0.00	0.00	0.00	0.00	0.00	0.00	0.00	0.00	0.00	0.00	0.00
5	0.17	1.61	3.36	3.94	3.91	3.77	3.68	2.75	2.44	2.35	1.44	0.68	1.19	1.09	2.17	2.51	3.63	4.33	4.79
10	4.89	8.46	11.1	11.0	10.6	11.0	9.64	8.31	7.71	7.47	6.45	4.80	5.63	6.42	7.43	8.77	11.5	13.2	13.4
15	9.62	14.2	17.3	18.3	18.4	19.8	18.7	15.7	14.3	12.7	11.1	8.63	9.90	12.4	14.2	16.8	17.2	19.9	21.2
20	13.1	19.7	22.2	25.8	27.9	20.9	20.7	23.2	21.2	18.2	15.2	11.9	14.7	12.6	16.0	17.3	18.6	20.3	20.7
25	16.5	22.5	27.8	22.1	21.9	21.0	19.8	22.6	25.5	24.9	18.3	14.7	13.3	12.0	13.8	14.9	15.2	16.6	16.7
30	18.8	24.7	25.7	22.7	21.8	20.8	22.9	20.4	21.4	22.6	19.0	16.6	10.0	9.38	10.4	10.9	12.2	13.7	12.7
35	20.3	23.4	25.9	24.5	24.1	22.4	20.3	20.1	19.9	22.6	20.9	17.8	9.55	9.38	9.13	10.0	12.1	14.1	7.94
40	21.3	24.0	27.3	26.2	25.2	24.1	20.3	20.3	19.8	22.7	22.5	18.9	11.0	9.96	9.37	10.5	12.1	12.5	6.70
45	21.3	23.9	26.4	27.3	26.5	24.1	21.4	19.9	19.8	23.4	23.5	19.3	11.6	9.96	9.63	11.6	12.6	11.0	6.70
50	22.3	22.5	25.4	28.0	27.1	24.6	21.2	19.8	20.3	23.8	23.4	20.0	12.4	10.8	9.63	13.2	13.3	11.3	6.61
55	20.9	21.9	23.0	27.9	27.5	24.9	21.3	19.9	20.6	24.1	23.4	25.3	12.8	9.54	9.71	13.1	13.6	12.0	6.87
60	19.5	19.9	21.3	28.0	27.6	23.7	21.3	19.5	19.3	23.4	24.1	24.7	13.0	10.0	9.88	12.9	14.3	12.4	10.0
65	19.3	17.8	18.9	27.8	29.3	22.1	19.9	18.0	20.5	25.4	24.2	22.1	12.8	11.1	10.0	13.3	15.4	12.8	11.3
70	20.0	15.7	16.3	28.3	28.0	19.9	17.2	17.3	20.5	29.2	21.3	23.4	12.9	11.2	10.0	12.7	13.6	16.8	10.7
75	17.8	13.9	13.5	24.6	27.1	18.2	15.4	15.8	21.3	22.4	21.1	22.6	13.1	10.6	10.7	13.4	12.9	12.7	8.04
80	15.5	11.3	12.2	23.2	24.7	16.9	13.1	13.2	18.3	19.4	22.3	22.3	12.5	11.5	9.37	12.4	14.5	11.9	7.45
85	13.7	9.96	10.2	23.0	25.6	15.6	11.5	11.9	17.7	19.3	20.0	21.5	11.4	10.6	8.96	12.3	12.9	12.0	8.20
90	14.6	9.30	9.88	24.1	24.4	14.1	10.6	11.3	16.3	16.3	19.2	19.8	11.1	9.21	8.54	11.0	12.5	9.71	9.96
95	14.2	10.7	10.7	24.3	25.2	14.0	10.7	12.6	16.8	15.4	16.4	22.1	11.9	10.0	8.96	10.5	12.0	11.0	8.53
100	14.0	11.6	11.0	24.0	25.1	15.5	14.1	13.1	17.4	16.9	21.9	18.6	11.2	9.29	8.62	11.5	11.4	11.2	8.30
105	13.7	13.4	11.9	23.3	26.7	17.3	12.1	14.8	18.0	19.4	20.8	19.7	10.5	9.62	9.29	11.8	12.7	16.1	8.82
110	16.1	15.6	15.1	23.2	26.7	18.8	16.2	17.2	18.8	20.0	21.2	17.7	11.4	10.3	9.21	13.1	15.9	15.6	9.38
115	17.7	17.7	16.9	24.4	27.5	22.7	18.4	19.0	22.7	22.8	22.3	19.2	11.9	9.38	10.4	12.3	18.6	14.7	6.53
120	18.7	19.7	17.8	24.1	26.3	28.0	19.0	19.5	22.0	25.4	23.1	19.5	11.2	9.38	11.9	14.7	18.7	11.9	4.94
125	20.3	20.4	22.4	24.0	26.2	25.0	19.9	19.5	22.1	26.5	24.1	18.6	11.6	10.6	11.8	14.5	16.2	10.6	5.19
130	20.3	21.3	25.1	24.8	25.4	24.2	21.4	19.7	20.9	24.9	23.8	18.1	11.3	11.2	12.2	13.5	14.8	10.8	5.69
135	20.1	22.2	25.4	25.1	25.3	23.9	21.8	20.0	21.5	25.1	23.5	18.3	10.5	11.1	11.9	12.2	14.1	11.4	6.44
140	19.9	22.9	24.9	24.9	24.3	23.9	21.6	21.2	21.3	24.5	21.7	18.1	10.5	11.0	11.6	12.0	13.3	11.7	7.37
145	18.6	22.3	24.5	24.1	23.0	22.8	21.4	20.5	21.4	23.3	21.2	17.2	10.0	10.6	11.6	12.0	12.4	12.1	7.79
150	18.3	21.4	24.3	24.0	22.6	22.3	22.8	20.1	22.6	22.9	20.8	15.8	9.21	9.46	10.1	10.7	11.2	12.2	10.8
155	15.9	20.7	23.4	22.9	21.5	20.9	21.7	18.4	20.1	27.1	19.2	14.2	8.37	8.54	9.21	9.71	10.5	10.8	12.1
160	13.8	19.3	23.2	22.7	22.6	22.8	21.7	20.4	22.0	17.9	16.0	11.5	8.54	8.54	9.21	9.12	8.96	10.6	10.5
165	9.64	13.5	17.7	19.8	25.3	21.8	18.7	16.2	12.0	11.7	11.2	11.9	8.62	8.62	10.7	10.6	9.03	10.5	9.04
170	4.69	5.09	9.58	11.4	11.9	12.0	11.4	11.0	8.76	6.20	3.66	5.75	6.94	6.88	8.63	9.99	8.63	9.57	10.6
175	0.67	0.00	0.00	0.91	3.61	3.78	4.19	3.95	2.63	0.90	0.00	2.46	0.08	0.54	1.12	4.03	2.46	0.00	3.33
180	0.00	0.00	0.00	0.00	0.00	0.00	0.00	0.00	0.00	0.00	0.00	0.00	0.00	0.00	0.00	0.00	0.00	0.00	0.00

C Range: 0 - 360DEG
 C Interval: 15.0DEG
 Test Speed: HIGH
 Temperature:24.5°C
 Operators:Dingmin Zhang
 Test Date:2025-12-06

γ Range: 0 - 180DEG
 γ Interval: 0.5DEG
 Test System:EVERFINE GO-R5000_V2 SYSTEM V2.00.463
 Humidity:65.0%
 Test Distance:30.000m [K=0.9305]
 Remarks:

LUMINOUS DISTRIBUTION INTENSITY DATA

Test:U:120.30V I:0.1133A P:13.417W PF:0.9840 Freq:60.01Hz		
Lamp Flux:181.167x1 lm		
NAME:	TYPE:	WEIGHT:
SPEC.:	DIM.:	SERIAL No.:
MFR.:	SUR.:	Shielding Angle:

Table--2

UNIT: cd

C (DEG) γ (DEG)	285	300	315	330	345														
0	0.00	0.00	0.00	0.00	0.00														
5	4.68	3.99	1.49	0.84	0.65														
10	12.9	13.0	13.0	9.12	5.57														
15	21.1	20.2	19.4	15.3	12.2														
20	17.9	19.4	23.6	23.5	16.2														
25	15.5	17.8	19.0	21.3	16.4														
30	8.54	9.81	12.1	12.9	12.7														
35	5.27	6.37	8.12	9.54	7.05														
40	3.93	4.45	7.03	7.12	5.36														
45	3.68	4.19	6.86	6.78	4.86														
50	4.02	4.19	6.95	6.78	5.19														
55	4.02	3.93	6.95	7.69	4.86														
60	2.93	3.10	7.86	7.53	4.02														
65	3.01	2.68	6.78	7.87	3.85														
70	3.01	2.18	5.11	9.86	4.27														
75	3.43	1.69	3.93	6.28	5.44														
80	3.68	1.59	2.68	5.78	5.78														
85	3.68	1.59	2.26	5.44	5.94														
90	3.52	1.59	2.26	5.19	5.86														
95	3.35	1.59	2.26	4.86	5.44														
100	3.18	1.84	2.43	5.02	4.78														
105	3.01	2.17	3.43	5.11	3.93														
110	3.19	2.68	4.76	5.19	2.93														
115	5.27	4.74	5.86	4.86	2.93														
120	3.94	6.21	6.53	5.02	3.52														
125	4.60	5.78	6.36	5.36	4.69														
130	4.77	5.86	6.13	5.27	4.86														
135	4.77	5.44	5.86	5.44	4.19														
140	4.77	5.27	5.86	5.36	4.10														
145	4.77	5.11	5.78	5.36	4.44														
150	6.70	5.28	6.02	5.11	4.44														
155	8.05	6.73	5.11	5.36	4.84														
160	7.70	7.27	8.05	8.71	5.19														
165	8.70	8.03	8.12	9.46	6.69														
170	10.6	10.8	10.6	9.97	5.63														
175	3.67	3.47	2.43	1.26	0.60														
180	0.00	0.00	0.00	0.00	0.00														

C Range: 0 - 360DEG
 C Interval: 15.0DEG
 Test Speed: HIGH
 Temperature:24.5°C
 Operators:Dingmin Zhang
 Test Date:2025-12-06

γ Range: 0 - 180DEG
 γ Interval: 0.5DEG
 Test System:EVERFINE GO-R5000_V2 SYSTEM V2.00.463
 Humidity:65.0%
 Test Distance:30.000m [K=0.9305]
 Remarks: