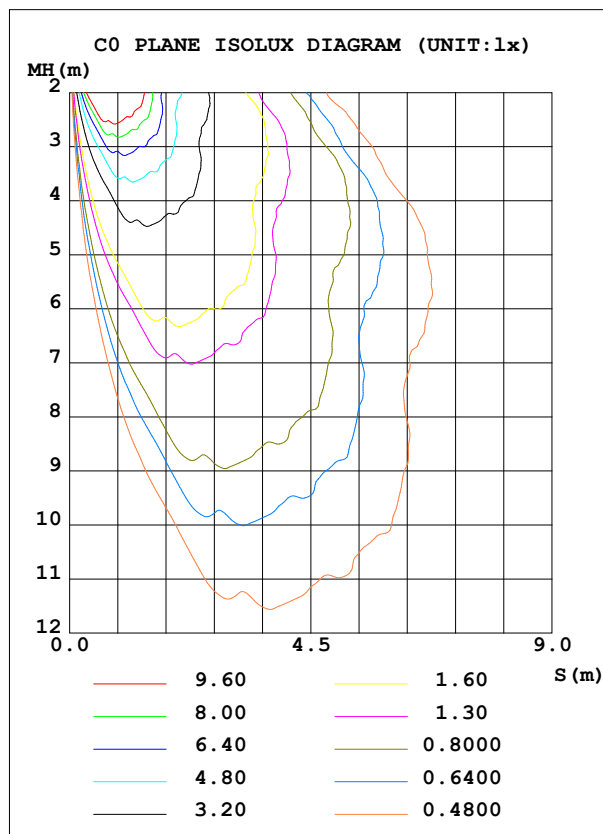
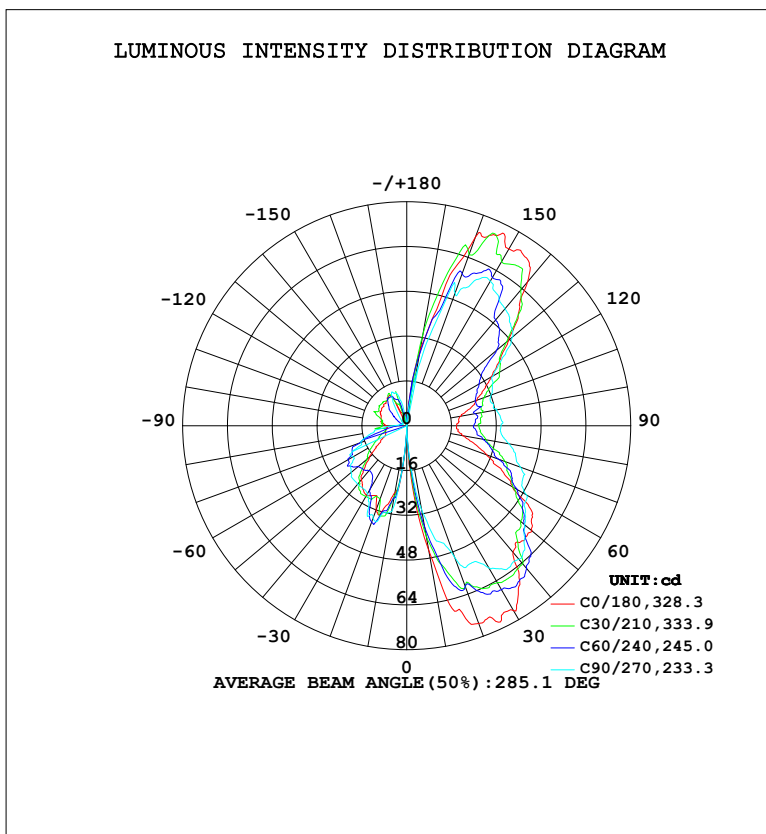


LUMINAIRE PHOTOMETRIC TEST REPORT

Test:U:120.30V I:0.3037A P:36.430W PF:0.9970 Freq:60.01Hz Lamp Flux:371.026x1 lm		
NAME:	TYPE:	WEIGHT:
SPEC.:	DIM.:	SERIAL No.:
MFR.:	SUR.:	Shielding Angle:

DATA OF LAMP		PHOTOMETRIC DATA			
MODEL	HF7183-BK	Imax (cd)	77.67	S/MH (C0/180)	0.00
NOMINAL POWER (W)		LOR (%)	100.0	S/MH (C90/270)	0.00
RATED VOLTAGE (V)	120	TOTAL FLUX (lm)	371.03	η UP, DN (C0-180)	36.2, 41.6
NOMINAL FLUX (lm)	371.026	CIE CLASS	DIFFUSE	η UP, DN (C180-360)	5.5, 16.6
LAMPS INSIDE	1	η up (%)	41.7	CIBSE SHR NOM	0.50
TEST VOLTAGE (V)	120.378	η down (%)	58.3	CIBSE SHR MAX	0.70



C Range: 0 - 360DEG
 C Interval: 15.0DEG
 Test Speed: HIGH
 Temperature: 24.5°C
 Operators: Dingmin Zhang
 Test Date: 2025-12-05

γ Range: 0 - 180DEG
 γ Interval: 0.5DEG
 Test System: EVERFINE GO-R5000_V2 SYSTEM V2.00.463
 Humidity: 65.0%
 Test Distance: 30.000m [K=0.9305]
 Remarks:

ZONAL FLUX DIAGRAM

ZONAL FLUX DIAGRAM:

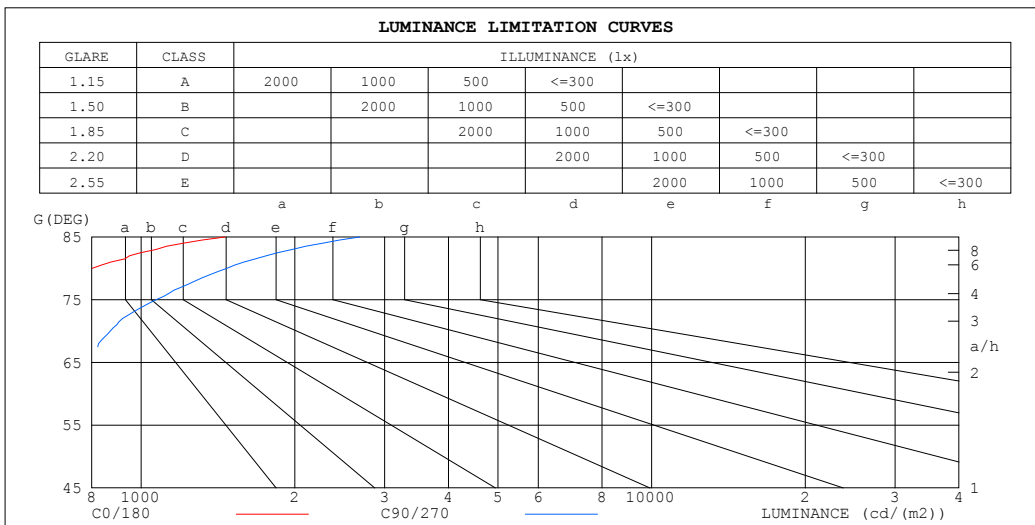
γ	C0	C45	C90	C135	C180	C225	C270	C315	γ	Φ zone	Φ total	%lum, lamp
10	44.98	38.36	30.31	35.13	24.37	26.84	31.13	32.16	0- 10	1.964	1.964	0.53,0.53
20	75.15	62.20	49.92	57.67	32.09	30.88	35.31	37.08	10- 20	12.15	14.11	3.8,3.8
30	76.24	63.77	58.60	69.53	28.80	29.90	28.17	27.74	20- 30	21.91	36.02	9.71,9.71
40	59.10	60.69	62.28	71.40	25.11	25.78	27.23	28.06	30- 40	29.27	65.29	17.6,17.6
50	58.35	51.05	54.93	70.32	17.41	22.18	25.92	26.20	40- 50	33.74	99.04	26.7,26.7
60	43.70	45.04	49.30	60.25	10.76	20.05	22.24	22.58	50- 60	34.36	133.4	36,36
70	30.48	36.92	43.21	54.11	8.007	13.31	17.41	16.66	60- 70	32.25	165.6	44.6,44.6
80	20.22	32.05	37.10	48.22	7.679	8.954	11.80	11.36	70- 80	27.62	193.3	52.1,52.1
90	17.86	30.68	33.69	38.16	7.291	9.506	4.845	6.882	80- 90	22.97	216.2	58.3,58.3
100	19.57	30.37	32.48	42.02	9.345	8.203	2.679	5.644	90-100	20.91	237.1	63.9,63.9
110	26.69	29.14	32.03	42.02	9.743	8.282	1.607	3.951	100-110	19.79	256.9	69.3,69.3
120	34.82	30.05	35.66	54.09	10.58	10.47	1.555	2.218	110-120	20.67	277.6	74.8,74.8
130	47.53	39.38	49.31	64.04	10.71	13.31	2.183	2.145	120-130	22.64	300.2	80.9,80.9
140	67.15	53.50	54.58	64.79	11.37	10.61	3.851	2.875	130-140	23.88	324.1	87.4,87.4
150	72.97	66.80	59.68	67.94	12.52	10.30	9.888	7.287	140-150	22.00	346.1	93.3,93.3
160	71.70	66.63	50.61	52.41	4.939	8.535	12.39	10.56	150-160	16.91	363.0	97.8,97.8
170	27.61	29.43	17.29	11.50	1.595	3.200	4.244	7.965	160-170	7.398	370.4	99.8,99.8
180	0	0	0	0	0	0	0	0	170-180	0.5931	371.0	100,100
DEG	LUMINOUS INTENSITY:cd									UNIT:lm		

C Range: 0 - 360DEG
 C Interval: 15.0DEG
 Test Speed: HIGH
 Temperature:24.5°C
 Operators:Dingmin Zhang
 Test Date:2025-12-05

γ Range: 0 - 180DEG
 γ Interval: 0.5DEG
 Test System:EVERFINE GO-R5000_V2 SYSTEM V2.00.463
 Humidity:65.0%
 Test Distance:30.000m [K=0.9305]
 Remarks:

LUMINANCE LIMITATION CURVES

Test:U:120.30V I:0.3037A P:36.430W PF:0.9970 Freq:60.01Hz		
Lamp Flux:371.026x1 lm		
NAME:	TYPE:	WEIGHT:
SPEC.:	DIM.:	SERIAL No.:
MFR.:	SUR.:	Shielding Angle:



LUMINANCE cd/(m2)		
G (DEG)	C0/180	C90/270
85	1462	2683
80	802	1472
75	667	1070
70	614	870
65	608	744
60	602	679
55	660	620
50	625	589
45	567	577

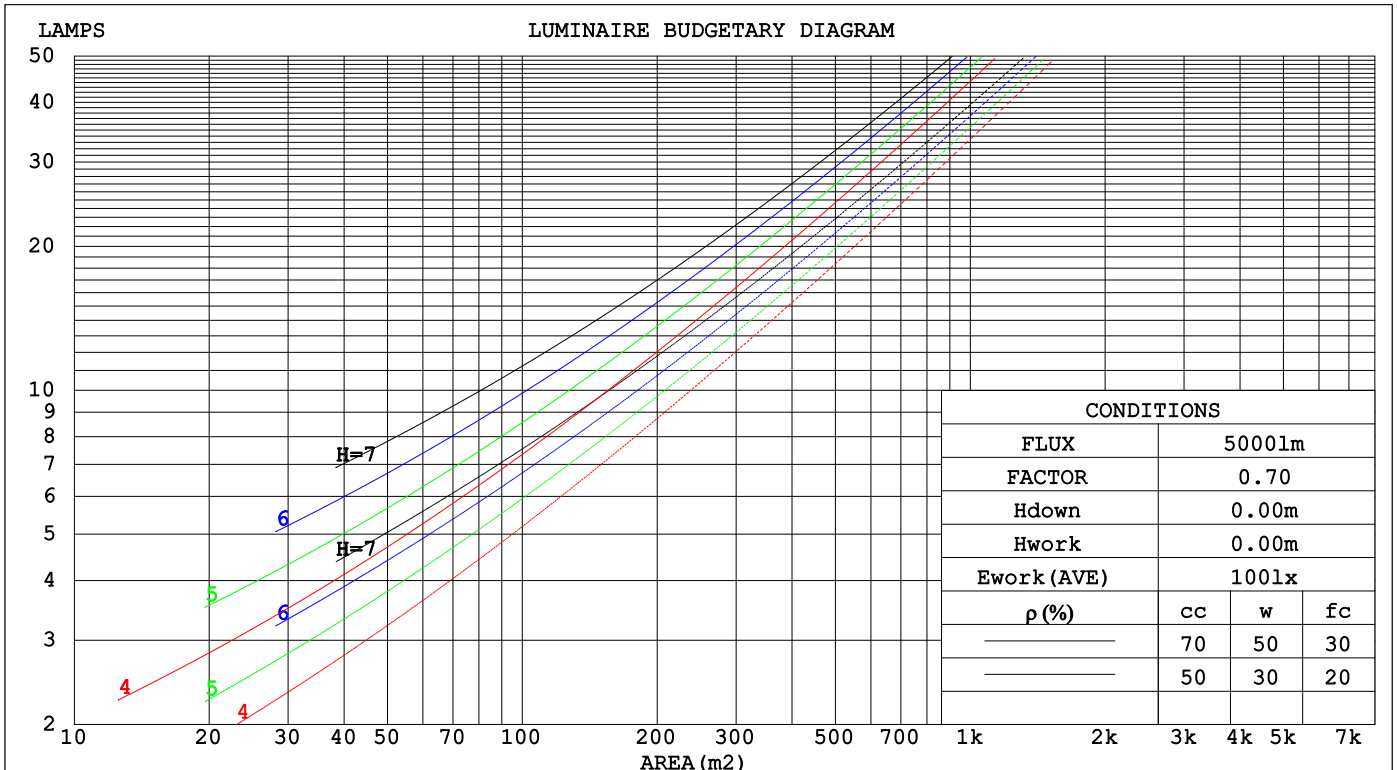
C Range: 0 - 360DEG
 C Interval: 15.0DEG
 Test Speed: HIGH
 Temperature:24.5°C
 Operators:Dingmin Zhang
 Test Date:2025-12-05

γ Range: 0 - 180DEG
 γ Interval: 0.5DEG
 Test System:EVERFINE GO-R5000_V2 SYSTEM V2.00.463
 Humidity:65.0%
 Test Distance:30.000m [K=0.9305]
 Remarks:

CU AND LUMINAIRE BUDGETARY ESTIMATE DIAGRAM

Test:U:120.30V I:0.3037A P:36.430W PF:0.9970 Freq:60.01Hz		
Lamp Flux:371.026x1 lm		
NAME:	TYPE:	WEIGHT:
SPEC.:	DIM.:	SERIAL No.:
MFR.:	SUR.:	Shielding Angle:

pcc	80%			70%			50%			30%			10%			0
pw	50%	30%	10%	50%	30%	10%	50%	30%	10%	50%	30%	10%	50%	30%	10%	0
pfc	20%			20%			20%			20%			20%			0
RCR	RCR:Room Cavity Ratio						Coefficients of Utilization(CU)									
0.0	1.09	1.09	1.09	1.02	1.02	1.02	.88	.88	.88	.75	.75	.75	.64	.64	.64	.58
1.0	.91	.86	.81	.85	.80	.76	.73	.69	.66	.62	.59	.57	.52	.50	.48	.43
2.0	.78	.70	.64	.72	.66	.60	.62	.57	.52	.52	.48	.45	.44	.41	.38	.34
3.0	.67	.59	.52	.62	.55	.49	.54	.47	.42	.45	.41	.37	.38	.34	.31	.27
4.0	.59	.50	.43	.55	.47	.40	.47	.40	.35	.40	.35	.30	.33	.29	.26	.22
5.0	.52	.43	.36	.48	.40	.34	.41	.35	.30	.35	.30	.26	.29	.25	.22	.18
6.0	.46	.37	.31	.43	.35	.29	.37	.30	.25	.31	.26	.22	.26	.22	.19	.16
7.0	.41	.33	.27	.39	.31	.25	.33	.27	.22	.28	.23	.19	.24	.19	.16	.14
8.0	.37	.29	.23	.35	.27	.22	.30	.24	.19	.26	.20	.17	.22	.17	.14	.12
9.0	.34	.26	.20	.32	.24	.19	.27	.21	.17	.23	.18	.15	.20	.16	.13	.10
10.0	.31	.23	.18	.29	.22	.17	.25	.19	.15	.22	.17	.13	.18	.14	.11	.09



C Range: 0 - 360DEG
 C Interval: 15.0DEG
 Test Speed: HIGH
 Temperature:24.5°C
 Operators:Dingmin Zhang
 Test Date:2025-12-05

γ Range: 0 - 180DEG
 γ Interval: 0.5DEG
 Test System:EVERFINE GO-R5000_V2 SYSTEM V2.00.463
 Humidity:65.0%
 Test Distance:30.000m [K=0.9305]
 Remarks:

WEC AND CCEC

Test:U:120.30V I:0.3037A P:36.430W PF:0.9970 Freq:60.01Hz								
Lamp Flux:371.026x1 lm								
NAME:			TYPE:			WEIGHT:		
SPEC.:			DIM.:			SERIAL No.:		
MFR.:			SUR.:			Shielding Angle:		

ρ _{cc}	80%			70%			50%			30%			10%			0
ρ _w	50%	30%	10%	50%	30%	10%	50%	30%	10%	50%	30%	10%	50%	30%	10%	0
ρ _{fc}	20%			20%			20%			20%			20%			0
RCR	RCR:Room Cavity Ratio						Wall Exitance Coefficients(WEC)									
0.0																
1.0	.365	.207	.066	.345	.197	.063	.308	.177	.056	.274	.158	.051	.242	.140	.045	
2.0	.317	.174	.053	.299	.165	.051	.265	.148	.046	.234	.131	.041	.205	.116	.037	
3.0	.283	.151	.045	.266	.143	.043	.235	.128	.039	.207	.113	.035	.180	.100	.031	
4.0	.255	.133	.039	.240	.126	.037	.212	.112	.034	.186	.100	.030	.161	.088	.027	
5.0	.233	.119	.034	.219	.112	.033	.193	.100	.030	.169	.089	.026	.146	.078	.023	
6.0	.214	.107	.031	.201	.102	.029	.177	.091	.026	.155	.080	.024	.134	.070	.021	
7.0	.197	.098	.028	.186	.093	.026	.164	.083	.024	.143	.073	.021	.123	.064	.019	
8.0	.183	.090	.025	.173	.085	.024	.152	.076	.022	.133	.067	.019	.114	.059	.017	
9.0	.171	.083	.023	.161	.078	.022	.142	.070	.020	.124	.062	.018	.107	.054	.016	
10.0	.160	.077	.021	.151	.073	.020	.133	.065	.018	.116	.058	.016	.100	.050	.014	

ρ _{cc}	80%			70%			50%			30%			10%			0
ρ _w	50%	30%	10%	50%	30%	10%	50%	30%	10%	50%	30%	10%	50%	30%	10%	0
ρ _{fc}	20%			20%			20%			20%			20%			0
RCR	RCR:Room Cavity Ratio						Ceiling Cavity Exitance Coefficients(CCEC)									
0.0	.508	.508	.508	.434	.434	.434	.297	.297	.297	.170	.170	.170	.054	.054	.054	
1.0	.505	.476	.451	.432	.409	.388	.295	.281	.268	.170	.163	.156	.054	.052	.050	
2.0	.498	.454	.418	.427	.391	.361	.292	.271	.252	.169	.157	.148	.054	.051	.048	
3.0	.491	.439	.397	.421	.378	.344	.289	.263	.241	.167	.154	.142	.054	.050	.047	
4.0	.484	.427	.383	.415	.369	.333	.286	.257	.234	.165	.151	.139	.053	.049	.046	
5.0	.477	.418	.374	.410	.361	.325	.282	.252	.230	.164	.148	.136	.053	.048	.045	
6.0	.470	.410	.367	.404	.355	.320	.279	.249	.226	.162	.146	.134	.052	.048	.044	
7.0	.464	.404	.362	.399	.350	.316	.276	.245	.224	.160	.145	.133	.052	.047	.044	
8.0	.457	.399	.358	.394	.346	.312	.272	.243	.222	.158	.143	.132	.051	.047	.044	
9.0	.451	.394	.355	.389	.342	.310	.269	.240	.220	.157	.142	.131	.051	.047	.044	
10.0	.446	.390	.353	.384	.339	.308	.267	.238	.219	.156	.141	.131	.050	.046	.043	

C Range: 0 - 360DEG
 C Interval: 15.0DEG
 Test Speed: HIGH
 Temperature:24.5°C
 Operators:Dingmin Zhang
 Test Date:2025-12-05

γ Range: 0 - 180DEG
 γ Interval: 0.5DEG
 Test System:EVERFINE GO-R5000_V2 SYSTEM V2.00.463
 Humidity:65.0%
 Test Distance:30.000m [K=0.9305]
 Remarks:

UGR(Unified Glare Rating) Table

Test:U:120.30V I:0.3037A P:36.430W PF:0.9970 Freq:60.01Hz										
Lamp Flux:371.026x1 lm										
NAME:			TYPE:			WEIGHT:				
SPEC.:			DIM.:			SERIAL No.:				
MFR.:			SUR.:			Shielding Angle:				
ceiling/cavity	0.7	0.7	0.5	0.5	0.3	0.7	0.7	0.5	0.5	0.3
walls	0.5	0.3	0.5	0.3	0.3	0.5	0.3	0.5	0.3	0.3
working plane	0.2	0.2	0.2	0.2	0.2	0.2	0.2	0.2	0.2	0.2
Room dimensions	Viewed crosswise					Viewed endwise				
x = 2H y = 2H	9.6	10.8	10.4	11.6	12.5	10.1	11.2	10.9	12.0	13.0
3H	11.7	12.7	12.5	13.5	14.5	12.5	13.5	13.3	14.3	15.4
4H	12.6	13.6	13.5	14.4	15.5	13.8	14.8	14.6	15.6	16.7
6H	13.5	14.4	14.3	15.3	16.3	15.3	16.2	16.2	17.1	18.1
8H	14.0	14.8	14.8	15.7	16.8	16.2	17.0	17.0	17.9	19.0
12H	14.6	15.4	15.4	16.3	17.4	17.1	18.0	18.0	18.8	19.9
4H 2H	10.3	11.2	11.1	12.1	13.1	10.6	11.6	11.4	12.4	13.5
3H	12.6	13.4	13.4	14.3	15.4	13.1	13.9	14.0	14.8	15.9
4H	13.8	14.5	14.6	15.4	16.5	14.6	15.3	15.5	16.2	17.3
6H	14.8	15.5	15.7	16.4	17.6	16.3	17.0	17.2	17.9	19.0
8H	15.4	16.0	16.3	17.0	18.1	17.3	17.9	18.2	18.8	20.0
12H	16.1	16.7	17.0	17.6	18.8	18.4	19.0	19.3	19.9	21.1
8H 4H	14.3	14.9	15.2	15.9	17.0	15.0	15.6	15.9	16.5	17.7
6H	15.8	16.3	16.7	17.2	18.4	16.9	17.4	17.8	18.3	19.5
8H	16.6	17.0	17.5	18.0	19.2	18.0	18.5	18.9	19.4	20.6
12H	17.5	17.9	18.4	18.8	20.1	19.3	19.8	20.3	20.7	21.9
12H 4H	14.4	15.0	15.4	15.9	17.1	15.1	15.6	16.0	16.6	17.7
6H	16.1	16.6	17.0	17.5	18.7	17.1	17.5	18.0	18.5	19.7
8H	17.1	17.5	18.0	18.4	19.7	18.3	18.7	19.2	19.6	20.9
Variations with the observer position at spacings(CIE Pub.117):										
S = 1.0H	+ 0.1 / - 0.2					+ 0.1 / - 0.1				
1.5H	+ 0.2 / - 0.3					+ 0.2 / - 0.3				
2.0H	+ 0.2 / - 0.5					+ 0.3 / - 0.4				

CIE Pub.117, 371.0 lm Total Lamp Luminous Flux Corrected (8log(F/F0) = -3.4)
 Area: 0.14515 m2

C Range: 0 - 360DEG
 C Interval: 15.0DEG
 Test Speed: HIGH
 Temperature:24.5°C
 Operators:Dingmin Zhang
 Test Date:2025-12-05

γ Range: 0 - 180DEG
 γ Interval: 0.5DEG
 Test System:EVERFINE GO-R5000_V2 SYSTEM V2.00.463
 Humidity:65.0%
 Test Distance:30.000m [K=0.9305]
 Remarks:

UTILIZATION FACTORS TABLE

Test:U:120.30V I:0.3037A P:36.430W PF:0.9970 Freq:60.01Hz Lamp Flux:371.026x1 lm		
NAME:	TYPE:	WEIGHT:
SPEC.:	DIM.:	SERIAL No.:
MFR.:	SUR.:	Shielding Angle:

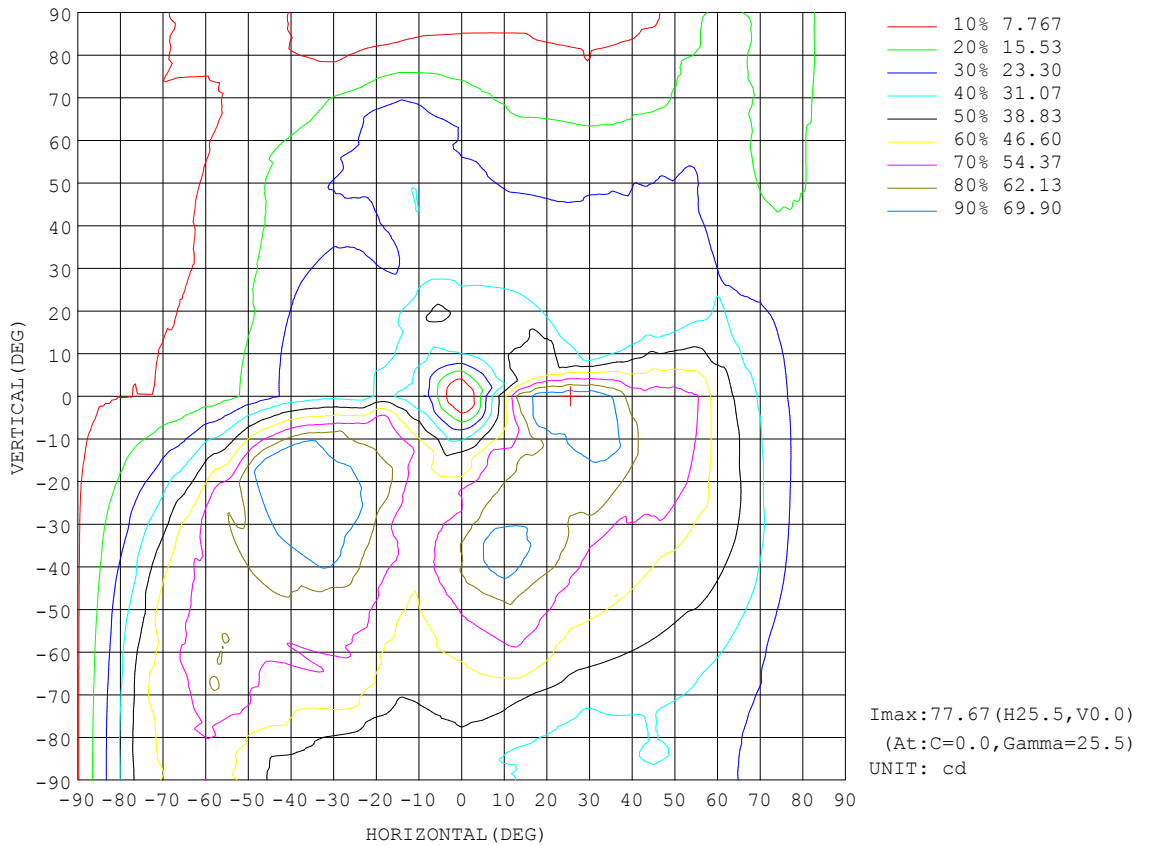
REFLECTANCE										
Ceiling	0.8	0.8	0.8	0.7	0.7	0.7	0.5	0.5	0.5	0
Walls	0.7	0.5	0.3	0.7	0.5	0.3	0.7	0.5	0.3	0
Working plane	0.2	0.2	0.2	0.2	0.2	0.2	0.2	0.2	0.2	0
ROOM INDEX	UTILIZATION FACTORS (PERCENT) k(RI) x RCR = 5									
k = 0.60	41	29	22	39	28	21	35	26	20	12
0.80	50	37	29	47	36	28	42	33	26	17
1.00	58	45	36	54	43	35	48	41	32	21
1.25	65	52	43	61	49	41	54	44	38	25
1.50	70	57	49	66	54	47	58	49	42	28
2.00	77	66	58	72	62	55	63	55	49	33
2.50	82	72	64	77	68	60	67	60	54	35
3.00	86	76	69	80	72	65	70	63	58	38
4.00	91	83	76	85	78	72	73	68	63	42
5.00	94	87	81	88	81	76	76	71	67	44
ROOM INDEX	UF(total)									Direct
According to DIN EN 13032-2 2004			Suspended				SHRNOM = 1.25			

C Range: 0 - 360DEG
 C Interval: 15.0DEG
 Test Speed: HIGH
 Temperature:24.5°C
 Operators:Dingmin Zhang
 Test Date:2025-12-05

γ Range: 0 - 180DEG
 γ Interval: 0.5DEG
 Test System:EVERFINE GO-R5000_V2 SYSTEM V2.00.463
 Humidity:65.0%
 Test Distance:30.000m [K=0.9305]
 Remarks:

ISOCANDELA DIAGRAM

Test:U:120.30V I:0.3037A P:36.430W PF:0.9970 Freq:60.01Hz Lamp Flux:371.026x1 lm		
NAME:	TYPE:	WEIGHT:
SPEC.:	DIM.:	SERIAL No.:
MFR.:	SUR.:	Shielding Angle:



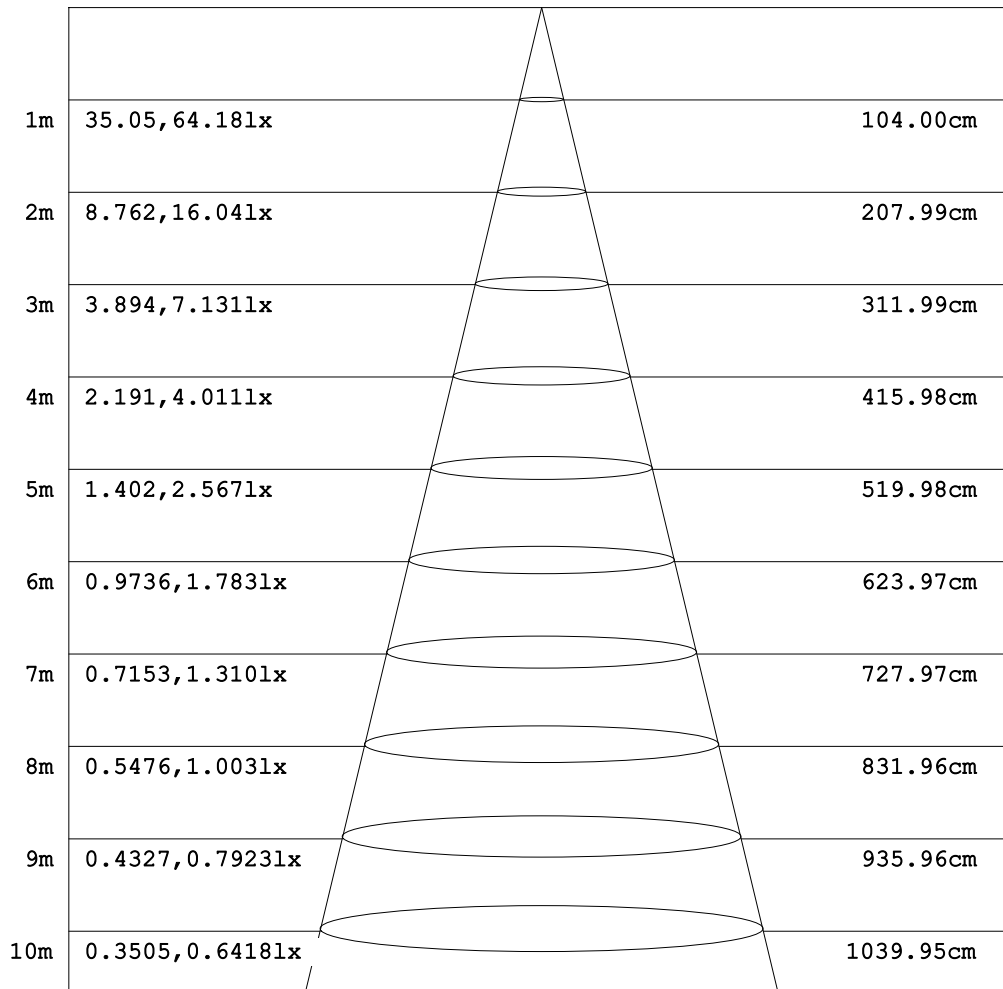
C Range: 0 - 360DEG
 C Interval: 15.0DEG
 Test Speed: HIGH
 Temperature:24.5°C
 Operators:Dingmin Zhang
 Test Date:2025-12-05

γ Range: 0 - 180DEG
 γ Interval: 0.5DEG
 Test System:EVERFINE GO-R5000_V2 SYSTEM V2.00.463
 Humidity:65.0%
 Test Distance:30.000m [K=0.9305]
 Remarks:

AAI Figure

Test:U:120.30V I:0.3037A P:36.430W PF:0.9970 Freq:60.01Hz Lamp Flux:371.026x1 lm		
NAME:	TYPE:	WEIGHT:
SPEC.:	DIM.:	SERIAL No.:
MFR.:	SUR.:	Shielding Angle:

Flux out:29.84 lm



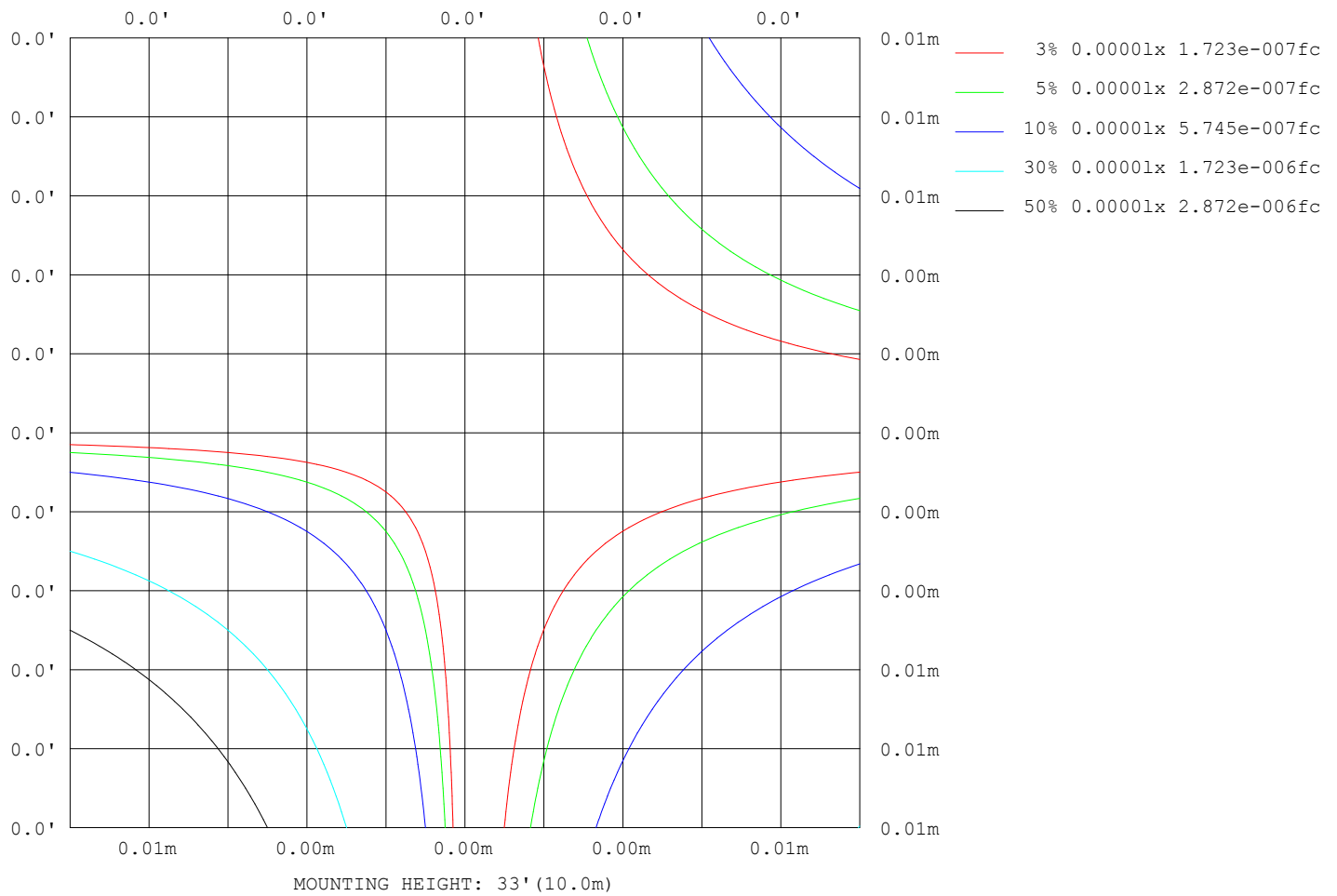
Note:The Curves indicate the illuminated area and the average illumination when the luminaire is at different distance.

C Range: 0 - 360DEG
 C Interval: 15.0DEG
 Test Speed: HIGH
 Temperature:24.5°C
 Operators:Dingmin Zhang
 Test Date:2025-12-05

γ Range: 0 - 180DEG
 γ Interval: 0.5DEG
 Test System:EVERFINE GO-R5000_V2 SYSTEM V2.00.463
 Humidity:65.0%
 Test Distance:30.000m [K=0.9305]
 Remarks:

ISOLUX DIAGRAM

Test:U:120.30V I:0.3037A P:36.430W PF:0.9970 Freq:60.01Hz Lamp Flux:371.026x1 lm		
NAME:	TYPE:	WEIGHT:
SPEC.:	DIM.:	SERIAL No.:
MFR.:	SUR.:	Shielding Angle:



C Range: 0 - 360DEG
 C Interval: 15.0DEG
 Test Speed: HIGH
 Temperature:24.5°C
 Operators:Dingmin Zhang
 Test Date:2025-12-05

γ Range: 0 - 180DEG
 γ Interval: 0.5DEG
 Test System:EVERFINE GO-R5000_V2 SYSTEM V2.00.463
 Humidity:65.0%
 Test Distance:30.000m [K=0.9305]
 Remarks:

LED Avg.L Report

Test:U:120.30V I:0.3037A P:36.430W PF:0.9970 Freq:60.01Hz Lamp Flux:371.026x1 lm		
NAME:	TYPE:	WEIGHT:
SPEC.:	DIM.:	SERIAL No.:
MFR.:	SUR.:	Shielding Angle:

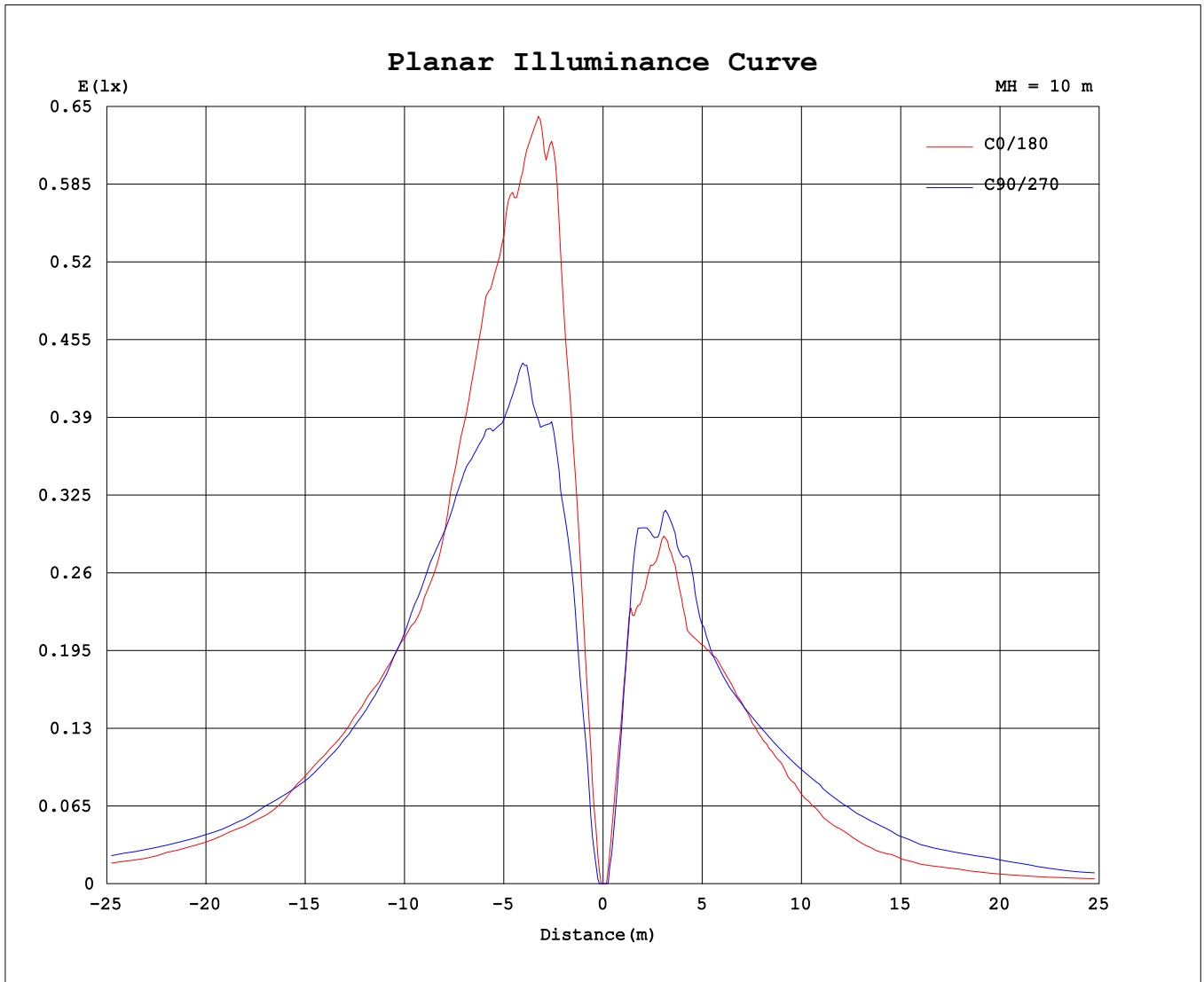
AvgL	cd/m2
L_0~180 (65) av	374
L_0~180 (75) av	438
L_0~180 (85) av	1015
L_90~270 (65) av	544
L_90~270 (75) av	730
L_90~270 (85) av	1649
L_45 (65) av	554
L_45 (75) av	718
L_45 (85) av	1792

Standard: GB/T 29293-2012

C Range: 0 - 360DEG
 C Interval: 15.0DEG
 Test Speed: HIGH
 Temperature:24.5°C
 Operators:Dingmin Zhang
 Test Date:2025-12-05

γ Range: 0 - 180DEG
 γ Interval: 0.5DEG
 Test System:EVERFINE GO-R5000_V2 SYSTEM V2.00.463
 Humidity:65.0%
 Test Distance:30.000m [K=0.9305]
 Remarks:

Planar Illuminance Curve



C Range: 0 - 360DEG
C Interval: 15.0DEG
Test Speed: HIGH
Temperature: 24.5°C
Operators: Dingmin Zhang
Test Date: 2025-12-05

γ Range: 0 - 180DEG
γ Interval: 0.5DEG
Test System: EVERFINE GO-R5000_V2 SYSTEM V2.00.463
Humidity: 65.0%
Test Distance: 30.000m [K=0.9305]
Remarks:

LUMINOUS DISTRIBUTION INTENSITY DATA

Test:U:120.30V I:0.3037A P:36.430W PF:0.9970 Freq:60.01Hz		
Lamp Flux:371.026x1 lm		
NAME:	TYPE:	WEIGHT:
SPEC.:	DIM.:	SERIAL No.:
MFR.:	SUR.:	Shielding Angle:

Table--1

UNIT: cd

C (DEG) \ γ (DEG)	0	15	30	45	60	75	90	105	120	135	150	165	180	195	210	225	240	255	270
0	0.00	0.00	0.00	0.00	0.00	0.00	0.00	0.00	0.00	0.00	0.00	0.00	0.00	0.00	0.00	0.00	0.00	0.00	0.00
5	19.0	18.2	15.1	13.4	12.6	11.7	12.2	13.6	14.7	14.9	13.8	13.6	12.8	12.7	11.5	11.5	11.9	11.2	11.6
10	45.0	43.6	39.7	38.4	36.5	32.9	30.3	29.0	33.8	35.1	34.7	29.1	24.4	28.6	25.4	26.8	26.2	29.2	31.1
15	68.6	63.4	52.8	50.6	55.9	49.0	42.7	39.8	48.9	49.6	48.9	43.5	30.0	34.0	33.4	34.9	31.4	34.7	32.2
20	75.1	75.0	61.3	62.2	61.1	56.3	49.9	47.8	49.7	57.7	58.3	58.1	32.1	31.8	27.8	30.9	36.6	42.0	35.3
25	77.4	72.3	64.2	63.1	66.2	61.6	54.2	53.4	51.7	65.4	64.1	57.1	27.5	29.8	28.5	29.6	30.9	35.6	32.4
30	76.2	77.3	64.7	63.8	67.6	67.7	58.6	50.8	54.0	69.5	69.2	63.3	28.8	30.6	29.2	29.9	26.3	29.8	28.2
35	69.9	75.0	65.5	63.7	68.9	75.0	62.5	51.2	54.5	70.7	73.5	69.3	27.5	28.6	28.8	28.0	21.4	28.3	27.3
40	59.1	67.7	64.5	60.7	66.6	74.6	62.3	50.3	57.2	71.4	72.9	74.6	25.1	26.4	26.4	25.8	21.0	29.8	27.2
45	58.2	60.0	55.3	54.6	62.2	68.4	59.3	47.1	57.2	72.8	74.1	74.5	21.2	21.9	23.2	23.3	22.0	31.3	27.0
50	58.3	57.9	53.2	51.0	54.8	62.0	54.9	45.4	57.8	70.3	71.9	72.0	17.4	16.9	18.7	22.2	22.7	31.1	25.9
55	54.9	55.0	49.5	47.6	50.5	58.2	51.6	43.0	57.4	62.2	65.5	61.8	13.4	13.4	16.7	21.7	24.9	29.7	24.5
60	43.7	47.3	43.8	45.0	45.7	54.1	49.3	41.6	54.6	60.2	63.6	61.2	10.8	10.1	14.0	20.0	24.2	29.9	22.2
65	37.3	44.1	40.0	41.3	41.2	49.1	45.7	41.2	53.8	56.5	59.7	54.3	8.62	8.30	11.4	18.6	21.5	28.2	21.1
70	30.5	36.3	37.3	36.9	35.0	41.6	43.2	39.5	52.0	54.1	59.9	52.3	8.01	6.85	9.89	13.3	17.7	23.4	17.4
75	25.1	31.1	32.3	33.4	31.2	37.3	40.2	36.3	48.8	50.6	62.5	49.4	7.88	5.87	8.19	10.5	12.2	17.9	14.6
80	20.2	23.6	28.8	32.1	27.8	32.9	37.1	33.4	40.9	48.2	60.3	45.3	7.68	5.86	7.64	8.95	7.71	11.5	11.8
85	18.5	19.6	26.5	32.6	25.1	29.4	33.9	31.9	36.7	40.3	54.6	45.8	7.20	6.44	11.0	8.95	5.11	6.80	7.79
90	17.9	17.8	25.9	30.7	23.9	30.5	33.7	35.1	34.3	38.2	54.7	43.2	7.29	6.70	9.21	9.51	3.09	3.35	4.85
95	18.8	17.6	26.4	30.6	24.6	29.2	33.6	30.6	32.1	40.5	56.1	42.7	8.21	7.55	8.96	8.67	1.92	2.30	2.84
100	19.6	20.7	27.0	30.4	24.8	28.3	32.5	28.4	30.2	42.0	50.8	41.2	9.35	8.62	9.05	8.20	1.77	1.51	2.68
105	23.3	24.5	28.2	29.4	26.7	28.3	31.4	28.2	32.5	41.0	48.9	39.4	9.48	8.92	9.64	8.23	1.76	1.66	2.00
110	26.7	28.3	29.4	29.1	26.0	29.5	32.0	28.2	36.2	42.0	49.6	41.5	9.74	9.80	11.6	8.28	2.19	2.09	1.61
115	30.4	34.4	33.0	29.2	27.8	32.7	33.8	31.0	40.7	47.3	54.8	44.0	10.3	11.1	12.1	8.45	2.88	2.51	1.39
120	34.8	42.9	38.3	30.0	29.9	36.2	35.7	34.8	42.9	54.1	55.4	47.7	10.6	11.3	11.5	10.5	3.85	3.35	1.56
125	40.4	45.9	40.5	32.5	32.8	44.0	41.5	39.0	44.9	59.4	59.8	50.5	11.0	12.6	11.9	13.0	5.36	4.09	1.76
130	47.5	53.5	46.5	39.4	41.8	56.6	49.3	45.5	46.8	64.0	64.9	54.7	10.7	12.6	12.0	13.3	6.70	5.02	2.18
135	56.3	57.0	56.7	47.4	46.8	58.9	52.1	46.8	46.4	65.7	69.0	63.1	11.1	12.1	12.0	12.0	8.99	6.36	2.70
140	67.1	63.1	63.5	53.5	49.4	61.0	54.6	47.9	45.5	64.8	68.4	63.1	11.4	11.8	11.5	10.6	10.4	7.95	3.85
145	73.7	65.1	69.6	62.5	59.8	64.8	56.9	49.8	46.6	66.0	65.5	64.5	12.2	11.8	11.6	10.4	11.9	10.4	6.11
150	73.0	71.0	67.8	66.8	61.3	68.0	59.7	55.2	55.4	67.9	63.1	63.2	12.5	14.2	13.1	10.3	11.9	13.6	9.89
155	75.0	64.8	75.4	64.3	60.2	63.3	57.2	60.5	54.8	68.3	59.3	57.1	7.59	11.3	9.03	8.62	10.9	16.1	13.0
160	71.7	59.3	65.1	66.6	57.9	61.5	50.6	52.6	51.1	52.4	49.3	49.0	4.94	6.64	8.12	8.54	10.0	13.2	12.4
165	46.9	60.7	56.6	51.0	41.2	43.3	35.8	36.3	29.9	34.2	39.6	40.8	2.59	1.65	1.09	3.82	5.52	9.13	10.6
170	27.6	27.1	33.3	29.4	25.4	21.7	17.3	13.2	12.7	11.5	18.6	22.9	1.59	1.49	2.25	3.20	4.36	5.62	4.24
175	5.87	3.31	2.34	2.50	5.98	6.38	5.07	3.96	2.78	0.74	0.40	2.11	0.75	0.69	1.39	1.51	0.29	0.00	0.00
180	0.00	0.00	0.00	0.00	0.00	0.00	0.00	0.00	0.00	0.00	0.00	0.00	0.00	0.00	0.00	0.00	0.00	0.00	0.00

C Range: 0 - 360DEG

C Interval: 15.0DEG

Test Speed: HIGH

Temperature:24.5°C

Operators:Dingmin Zhang

Test Date:2025-12-05

γ Range: 0 - 180DEG

γ Interval: 0.5DEG

Test System:EVERFINE GO-R5000_V2 SYSTEM V2.00.463

Humidity:65.0%

Test Distance:30.000m [K=0.9305]

Remarks:

LUMINOUS DISTRIBUTION INTENSITY DATA

Test:U:120.30V I:0.3037A P:36.430W PF:0.9970 Freq:60.01Hz Lamp Flux:371.026x1 lm		
NAME:	TYPE:	WEIGHT:
SPEC.:	DIM.:	SERIAL No.:
MFR.:	SUR.:	Shielding Angle:

Table--2

UNIT: cd

C (DEG) \ γ (DEG)	285	300	315	330	345														
0	0.00	0.00	0.00	0.00	0.00														
5	14.2	15.4	16.4	15.9	15.1														
10	31.6	31.6	32.2	32.9	29.9														
15	35.0	36.0	38.0	41.3	40.3														
20	34.8	34.4	37.1	41.4	42.8														
25	33.4	34.8	35.6	38.6	37.9														
30	27.0	28.5	27.7	26.6	30.6														
35	26.0	26.8	27.4	26.3	27.7														
40	25.7	26.5	28.1	26.8	28.7														
45	24.6	26.0	27.1	27.3	30.6														
50	22.6	23.2	26.2	28.6	25.6														
55	20.4	20.3	24.7	28.3	25.7														
60	18.1	17.7	22.6	26.0	26.9														
65	16.0	16.4	19.4	26.3	21.3														
70	13.8	12.6	16.7	23.1	18.2														
75	11.0	10.3	13.4	20.7	17.4														
80	9.58	7.78	11.4	21.2	13.1														
85	7.87	5.78	8.88	18.3	12.9														
90	6.61	5.19	6.88	17.2	12.9														
95	4.44	4.10	6.20	10.3	10.4														
100	3.89	3.94	5.64	9.14	7.68														
105	4.41	2.68	5.19	7.15	5.35														
110	1.98	1.76	3.95	5.20	3.85														
115	1.80	1.35	2.67	3.96	2.83														
120	1.45	1.38	2.22	2.90	2.71														
125	1.25	1.54	2.11	2.79	3.01														
130	1.17	1.68	2.15	2.83	3.52														
135	1.46	1.84	2.26	2.92	4.55														
140	1.78	2.42	2.87	3.93	6.71														
145	2.43	4.11	4.34	5.85	9.22														
150	5.61	6.70	7.29	9.29	10.9														
155	8.70	5.02	10.4	12.9	11.3														
160	9.71	7.20	10.6	17.7	11.8														
165	10.3	4.44	11.8	14.6	15.6														
170	2.76	5.89	7.96	9.58	11.5														
175	0.00	0.74	2.79	3.77	3.10														
180	0.00	0.00	0.00	0.00	0.00														

C Range: 0 - 360DEG
 C Interval: 15.0DEG
 Test Speed: HIGH
 Temperature:24.5°C
 Operators:Dingmin Zhang
 Test Date:2025-12-05

γ Range: 0 - 180DEG
 γ Interval: 0.5DEG
 Test System:EVERFINE GO-R5000_V2 SYSTEM V2.00.463
 Humidity:65.0%
 Test Distance:30.000m [K=0.9305]
 Remarks: