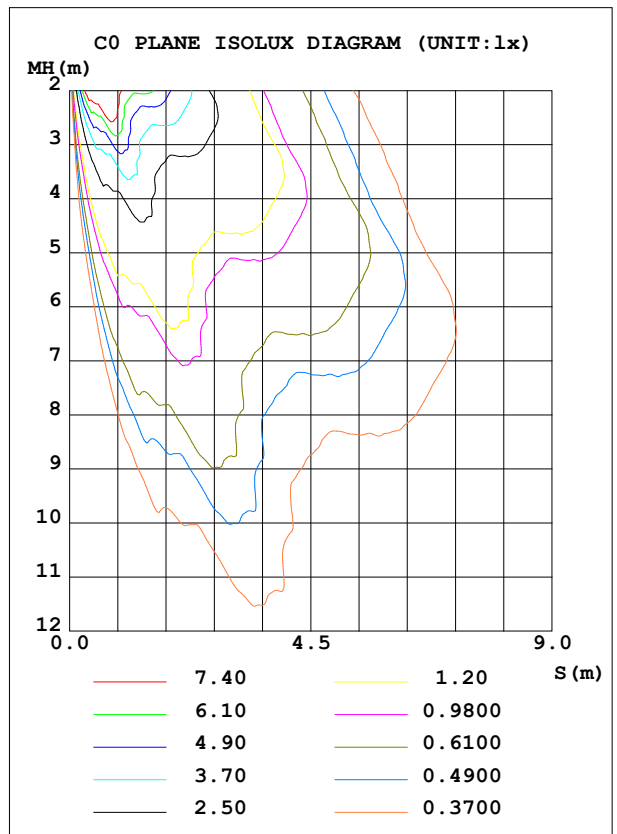
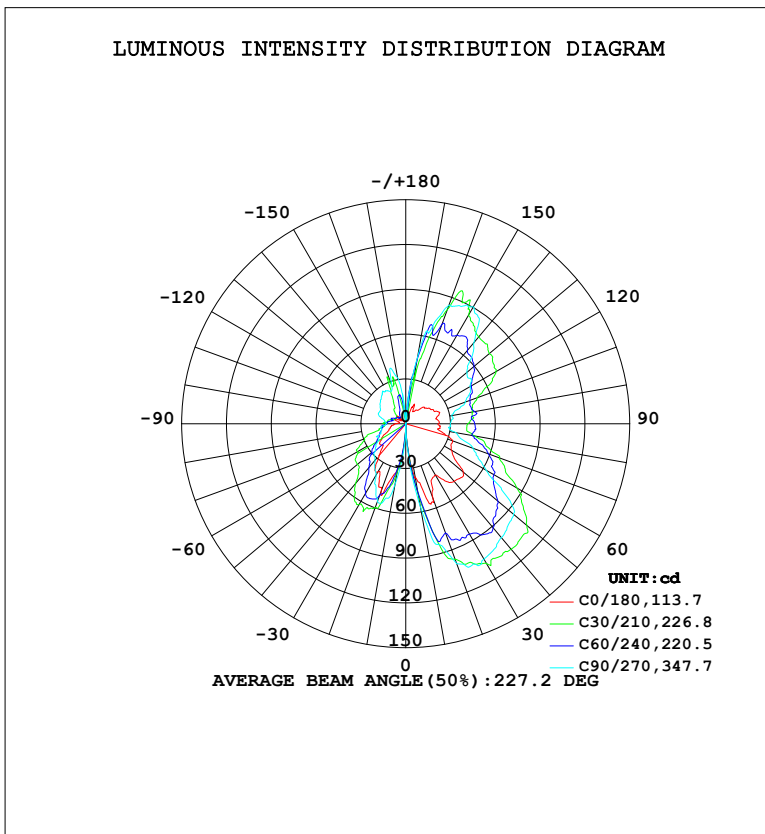


LUMINAIRE PHOTOMETRIC TEST REPORT

Test:U:120.31V I:0.5349A P:64.122W PF:0.9964 Freq:60.01Hz Lamp Flux:551.913x1 lm		
NAME:	TYPE:	WEIGHT:
SPEC.:	DIM.:	SERIAL No.:
MFR.:	SUR.:	Shielding Angle:

DATA OF LAMP		PHOTOMETRIC DATA			
MODEL	HF7186-BK	Imax (cd)	111.9	S/MH (C0/180)	0.00
NOMINAL POWER (W)		LOR (%)	100.0	S/MH (C90/270)	0.00
RATED VOLTAGE (V)	120	TOTAL FLUX (lm)	551.91	η UP, DN (C0-180)	31.3, 40.5
NOMINAL FLUX (lm)	551.913	CIE CLASS	DIFFUSE	η UP, DN (C180-360)	10.5, 17.6
LAMPS INSIDE	1	η up (%)	41.8	CIBSE SHR NOM	0.00
TEST VOLTAGE (V)	120.305	η down (%)	58.2	CIBSE SHR MAX	0.30



C Range: 0 - 360DEG
 C Interval: 15.0DEG
 Test Speed: HIGH
 Temperature: 24.5°C
 Operators: Dingmin Zhang
 Test Date: 2025-12-05

γ Range: 0 - 180DEG
 γ Interval: 0.5DEG
 Test System: EVERFINE GO-R5000_V2 SYSTEM V2.00.463
 Humidity: 65.0%
 Test Distance: 30.000m [K=0.9305]
 Remarks:

ZONAL FLUX DIAGRAM

ZONAL FLUX DIAGRAM:

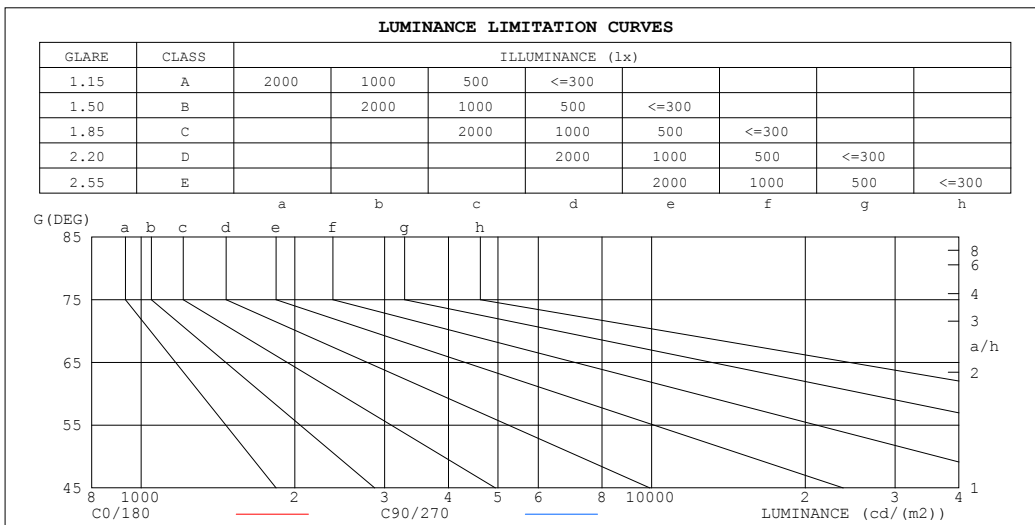
γ	C0	C45	C90	C135	C180	C225	C270	C315	γ	Φ zone	Φ total	%lum,lamp
10	36.75	44.99	55.94	42.74	30.28	30.53	40.86	47.43	0- 10	2.506	2.506	0.45,0.45
20	53.72	85.46	99.75	90.49	47.94	58.68	55.32	51.10	10- 20	17.22	19.73	3.57,3.57
30	39.68	96.77	104.7	97.44	37.35	60.58	39.94	42.29	20- 30	33.41	53.14	9.63,9.63
40	50.42	99.61	99.69	96.59	27.85	45.44	31.90	38.79	30- 40	43.72	96.86	17.5,17.5
50	50.32	88.67	94.17	91.38	22.06	37.16	26.63	39.93	40- 50	49.99	146.8	26.6,26.6
60	35.35	73.51	62.09	82.45	18.14	37.02	20.86	37.18	50- 60	50.44	197.3	35.7,35.7
70	33.34	57.51	47.95	80.29	11.97	22.75	17.66	24.13	60- 70	47.41	244.7	44.3,44.3
80	21.69	49.84	33.78	70.13	9.843	16.41	16.91	19.08	70- 80	41.09	285.8	51.8,51.8
90	21.89	44.62	29.97	58.65	6.857	10.38	12.98	16.58	80- 90	35.18	321.0	58.2,58.2
100	20.42	43.53	31.43	53.97	4.282	9.042	14.90	14.98	90-100	33.05	354.0	64.1,64.1
110	23.28	47.04	42.53	51.90	8.039	5.538	19.66	15.39	100-110	32.60	386.6	70.1,70.1
120	19.31	57.42	49.81	53.92	5.095	4.254	19.60	26.20	110-120	33.46	420.1	76.1,76.1
130	16.33	65.37	53.50	60.69	7.466	2.807	22.26	34.05	120-130	33.39	453.5	82.2,82.2
140	11.90	72.23	71.03	69.25	0	2.825	25.02	37.50	130-140	31.76	485.2	87.9,87.9
150	9.455	78.43	90.39	93.25	0	5.710	25.38	41.69	140-150	29.49	514.7	93.3,93.3
160	11.08	76.23	84.38	81.21	0	16.08	27.49	43.29	150-160	24.00	538.7	97.6,97.6
170	7.115	42.30	44.53	36.96	0	20.73	31.08	31.11	160-170	11.86	550.6	99.8,99.8
180	0	0	0	0	0	0	0	0	170-180	1.337	551.9	100,100
DEG	LUMINOUS INTENSITY:cd									UNIT:lm		

C Range: 0 - 360DEG
 C Interval: 15.0DEG
 Test Speed: HIGH
 Temperature:24.5°C
 Operators:Dingmin Zhang
 Test Date:2025-12-05

γ Range: 0 - 180DEG
 γ Interval: 0.5DEG
 Test System:EVERFINE GO-R5000_V2 SYSTEM V2.00.463
 Humidity:65.0%
 Test Distance:30.000m [K=0.9305]
 Remarks:

LUMINANCE LIMITATION CURVES

Test:U:120.31V I:0.5349A P:64.122W PF:0.9964 Freq:60.01Hz Lamp Flux:551.913x1 lm		
NAME:	TYPE:	WEIGHT:
SPEC.:	DIM.:	SERIAL No.:
MFR.:	SUR.:	Shielding Angle:



LUMINANCE cd/(m2)		
G (DEG)	C0/180	C90/270
85	522	658
80	249	387
75	209	291
70	194	279
65	158	252
60	141	247
55	137	277
50	156	292
45	145	272

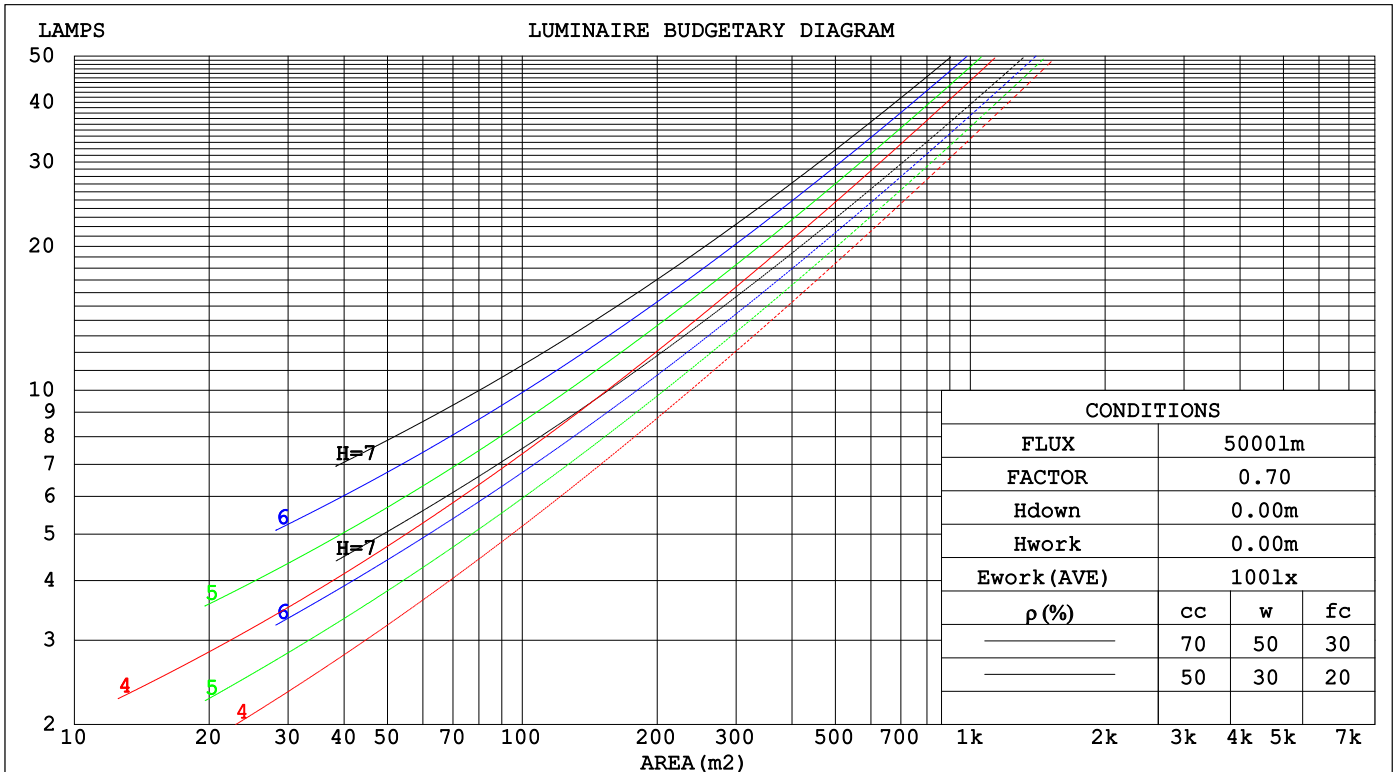
C Range: 0 - 360DEG
 C Interval: 15.0DEG
 Test Speed: HIGH
 Temperature: 24.5°C
 Operators: Dingmin Zhang
 Test Date: 2025-12-05

γ Range: 0 - 180DEG
 γ Interval: 0.5DEG
 Test System: EVERFINE GO-R5000_V2 SYSTEM V2.00.463
 Humidity: 65.0%
 Test Distance: 30.000m [K=0.9305]
 Remarks:

CU AND LUMINAIRE BUDGETARY ESTIMATE DIAGRAM

Test:U:120.31V I:0.5349A P:64.122W PF:0.9964 Freq:60.01Hz		
Lamp Flux:551.913x1 lm		
NAME:	TYPE:	WEIGHT:
SPEC.:	DIM.:	SERIAL No.:
MFR.:	SUR.:	Shielding Angle:

pcc	80%			70%			50%			30%			10%			0
pw	50%	30%	10%	50%	30%	10%	50%	30%	10%	50%	30%	10%	50%	30%	10%	0
pfc	20%			20%			20%			20%			20%			0
RCR	RCR:Room Cavity Ratio						Coefficients of Utilization(CU)									
0.0	1.09	1.09	1.09	1.02	1.02	1.02	.88	.88	.88	.75	.75	.75	.64	.64	.64	.58
1.0	.91	.86	.81	.84	.80	.76	.73	.69	.66	.62	.59	.57	.51	.49	.48	.43
2.0	.78	.70	.64	.72	.65	.60	.62	.57	.52	.52	.48	.45	.43	.40	.38	.33
3.0	.67	.58	.52	.62	.55	.48	.53	.47	.42	.45	.40	.36	.37	.34	.31	.27
4.0	.59	.50	.43	.55	.46	.40	.47	.40	.35	.40	.34	.30	.33	.29	.26	.22
5.0	.52	.43	.36	.48	.40	.34	.41	.35	.30	.35	.30	.26	.29	.25	.22	.18
6.0	.46	.37	.31	.43	.35	.29	.37	.30	.25	.31	.26	.22	.26	.22	.18	.16
7.0	.41	.33	.26	.39	.31	.25	.33	.27	.22	.28	.23	.19	.24	.19	.16	.13
8.0	.37	.29	.23	.35	.27	.22	.30	.24	.19	.26	.20	.17	.21	.17	.14	.12
9.0	.34	.26	.20	.32	.24	.19	.27	.21	.17	.23	.18	.15	.20	.15	.12	.10
10.0	.31	.23	.18	.29	.22	.17	.25	.19	.15	.21	.17	.13	.18	.14	.11	.09



C Range: 0 - 360DEG
 C Interval: 15.0DEG
 Test Speed: HIGH
 Temperature:24.5°C
 Operators:Dingmin Zhang
 Test Date:2025-12-05

γ Range: 0 - 180DEG
 γ Interval: 0.5DEG
 Test System:EVERFINE GO-R5000_V2 SYSTEM V2.00.463
 Humidity:65.0%
 Test Distance:30.000m [K=0.9305]
 Remarks:

WEC AND CCEC

Test:U:120.31V I:0.5349A P:64.122W PF:0.9964 Freq:60.01Hz														
Lamp Flux:551.913x1 lm														
NAME:					TYPE:					WEIGHT:				
SPEC.:					DIM.:					SERIAL No.:				
MFR.:					SUR.:					Shielding Angle:				

ρ _{cc}	80%			70%			50%			30%			10%			0
ρ _w	50%	30%	10%	50%	30%	10%	50%	30%	10%	50%	30%	10%	50%	30%	10%	0
ρ _{fc}	20%			20%			20%			20%			20%			0
RCR	RCR:Room Cavity Ratio						Wall Exitance Coefficients(WEC)									
0.0																
1.0	.367	.208	.066	.347	.198	.063	.310	.178	.057	.275	.159	.051	.244	.141	.046	
2.0	.318	.174	.053	.300	.165	.051	.266	.148	.046	.235	.132	.041	.206	.116	.037	
3.0	.283	.151	.045	.267	.143	.043	.236	.128	.039	.207	.114	.035	.181	.100	.031	
4.0	.256	.133	.039	.241	.126	.037	.212	.113	.034	.186	.100	.030	.161	.088	.027	
5.0	.233	.119	.034	.219	.113	.033	.193	.101	.030	.169	.089	.027	.146	.078	.023	
6.0	.214	.107	.031	.201	.102	.029	.177	.091	.026	.155	.080	.024	.134	.070	.021	
7.0	.198	.098	.028	.186	.093	.026	.164	.083	.024	.143	.073	.021	.123	.064	.019	
8.0	.183	.090	.025	.173	.085	.024	.152	.076	.022	.133	.067	.019	.114	.059	.017	
9.0	.171	.083	.023	.161	.079	.022	.142	.070	.020	.124	.062	.018	.107	.054	.016	
10.0	.160	.077	.021	.151	.073	.020	.133	.065	.018	.116	.058	.016	.100	.050	.014	

ρ _{cc}	80%			70%			50%			30%			10%			0
ρ _w	50%	30%	10%	50%	30%	10%	50%	30%	10%	50%	30%	10%	50%	30%	10%	0
ρ _{fc}	20%			20%			20%			20%			20%			0
RCR	RCR:Room Cavity Ratio						Ceiling Cavity Exitance Coefficients(CCEC)									
0.0	.509	.509	.509	.435	.435	.435	.297	.297	.297	.171	.171	.171	.055	.055	.055	
1.0	.506	.477	.451	.433	.409	.388	.296	.282	.269	.170	.163	.156	.055	.052	.051	
2.0	.499	.455	.418	.428	.392	.362	.293	.271	.252	.169	.158	.148	.054	.051	.048	
3.0	.492	.440	.398	.422	.379	.345	.290	.264	.242	.167	.154	.143	.054	.050	.047	
4.0	.485	.428	.384	.416	.370	.334	.286	.258	.235	.166	.151	.139	.053	.049	.046	
5.0	.478	.419	.375	.411	.362	.326	.283	.253	.230	.164	.149	.137	.053	.048	.045	
6.0	.471	.411	.368	.405	.356	.320	.279	.249	.227	.162	.147	.135	.052	.048	.045	
7.0	.465	.405	.363	.400	.351	.316	.276	.246	.224	.160	.145	.133	.052	.047	.044	
8.0	.458	.400	.359	.395	.347	.313	.273	.243	.222	.159	.144	.132	.051	.047	.044	
9.0	.453	.395	.356	.390	.343	.311	.270	.241	.221	.157	.142	.132	.051	.047	.044	
10.0	.447	.391	.354	.385	.340	.309	.267	.239	.220	.156	.141	.131	.051	.046	.043	

C Range: 0 - 360DEG
 C Interval: 15.0DEG
 Test Speed: HIGH
 Temperature:24.5°C
 Operators:Dingmin Zhang
 Test Date:2025-12-05

γ Range: 0 - 180DEG
 γ Interval: 0.5DEG
 Test System:EVERFINE GO-R5000_V2 SYSTEM V2.00.463
 Humidity:65.0%
 Test Distance:30.000m [K=0.9305]
 Remarks:

UGR(Unified Glare Rating) Table

Test:U:120.31V I:0.5349A P:64.122W PF:0.9964 Freq:60.01Hz										
Lamp Flux:551.913x1 lm										
NAME:			TYPE:			WEIGHT:				
SPEC.:			DIM.:			SERIAL No.:				
MFR.:			SUR.:			Shielding Angle:				
ceiling/cavity	0.7	0.7	0.5	0.5	0.3	0.7	0.7	0.5	0.5	0.3
walls	0.5	0.3	0.5	0.3	0.3	0.5	0.3	0.5	0.3	0.3
working plane	0.2	0.2	0.2	0.2	0.2	0.2	0.2	0.2	0.2	0.2
Room dimensions	Viewed crosswise					Viewed endwise				
x = 2H y = 2H	7.4	8.5	8.2	9.3	10.3	6.7	7.8	7.4	8.6	9.6
3H	9.5	10.5	10.3	11.3	12.3	8.5	9.5	9.3	10.4	11.4
4H	10.4	11.3	11.2	12.2	13.2	9.4	10.4	10.3	11.2	12.3
6H	11.2	12.1	12.0	13.0	14.0	10.5	11.4	11.3	12.2	13.3
8H	11.6	12.5	12.5	13.4	14.5	11.0	11.9	11.9	12.7	13.8
12H	12.2	13.0	13.0	13.9	15.0	11.7	12.5	12.6	13.4	14.5
4H 2H	8.0	9.0	8.9	9.8	10.9	7.5	8.5	8.3	9.3	10.4
3H	10.5	11.3	11.3	12.2	13.3	9.7	10.5	10.5	11.3	12.4
4H	11.7	12.5	12.6	13.4	14.5	10.8	11.5	11.6	12.4	13.5
6H	13.1	13.7	13.9	14.6	15.8	11.9	12.6	12.8	13.5	14.7
8H	13.7	14.4	14.6	15.3	16.4	12.6	13.2	13.5	14.1	15.3
12H	14.5	15.0	15.4	16.0	17.1	13.3	13.9	14.3	14.8	16.0
8H 4H	12.2	12.8	13.1	13.8	14.9	11.5	12.1	12.4	13.0	14.2
6H	13.9	14.4	14.8	15.4	16.6	13.0	13.5	14.0	14.5	15.7
8H	14.9	15.3	15.8	16.3	17.5	13.9	14.3	14.8	15.3	16.5
12H	16.1	16.5	17.0	17.4	18.7	14.9	15.3	15.8	16.2	17.5
12H 4H	12.3	12.9	13.2	13.8	15.0	11.6	12.2	12.5	13.1	14.3
6H	14.1	14.6	15.1	15.5	16.8	13.3	13.8	14.3	14.8	16.0
8H	15.2	15.6	16.2	16.6	17.8	14.4	14.8	15.3	15.8	17.0
Variations with the observer position at spacings(CIE Pub.117):										
S = 1.0H	+ 0.2 / - 0.2					+ 0.1 / - 0.1				
1.5H	+ 0.4 / - 0.6					+ 0.2 / - 0.3				
2.0H	+ 0.5 / - 1.0					+ 0.2 / - 0.3				

CIE Pub.117, 551.9 lm Total Lamp Luminous Flux Corrected (8log(F/F0) = -2.1)
 Area: 0.5024 m2

C Range: 0 - 360DEG	γ Range: 0 - 180DEG
C Interval: 15.0DEG	γ Interval: 0.5DEG
Test Speed: HIGH	Test System:EVERFINE GO-R5000_V2 SYSTEM V2.00.463
Temperature:24.5°C	Humidity:65.0%
Operators:Dingmin Zhang	Test Distance:30.000m [K=0.9305]
Test Date:2025-12-05	Remarks:

UTILIZATION FACTORS TABLE

Test:U:120.31V I:0.5349A P:64.122W PF:0.9964 Freq:60.01Hz Lamp Flux:551.913x1 lm		
NAME:	TYPE:	WEIGHT:
SPEC.:	DIM.:	SERIAL No.:
MFR.:	SUR.:	Shielding Angle:

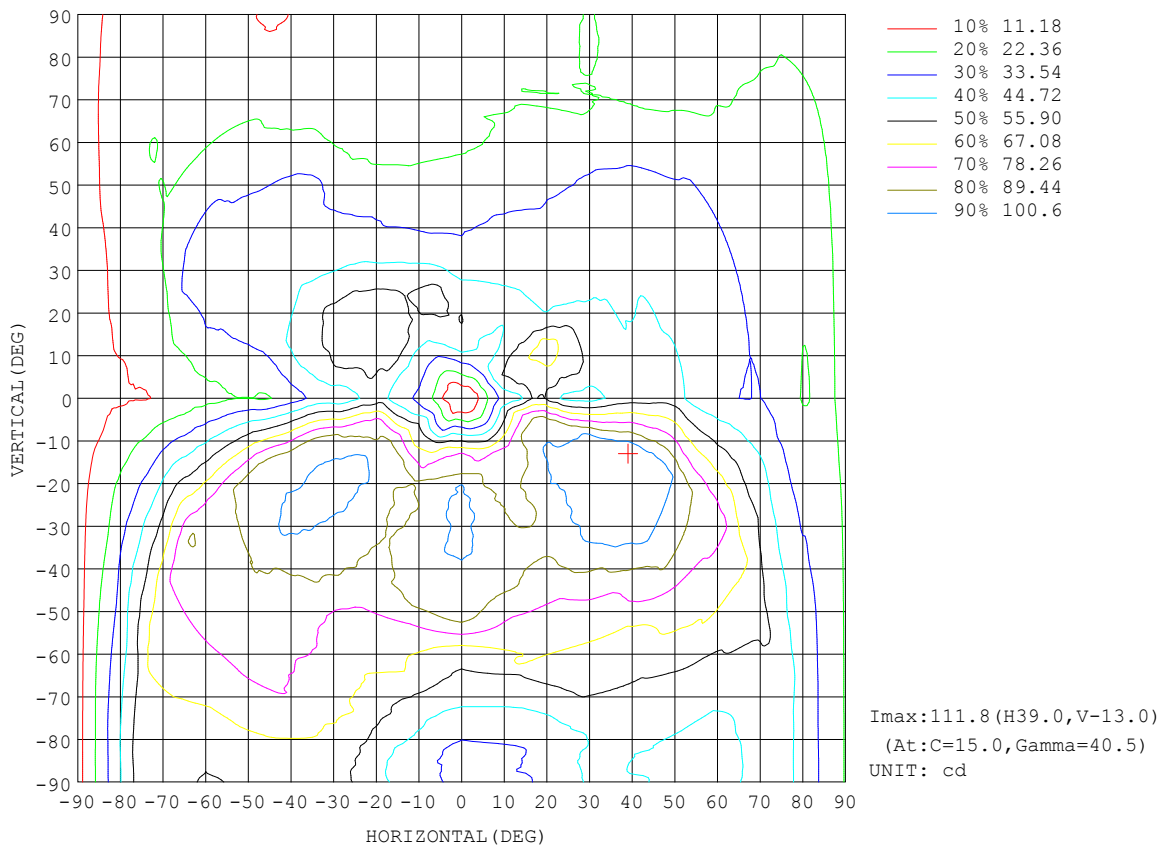
REFLECTANCE										
Ceiling	0.8	0.8	0.8	0.7	0.7	0.7	0.5	0.5	0.5	0
Walls	0.7	0.5	0.3	0.7	0.5	0.3	0.7	0.5	0.3	0
Working plane	0.2	0.2	0.2	0.2	0.2	0.2	0.2	0.2	0.2	0
ROOM INDEX	UTILIZATION FACTORS (PERCENT) k(RI) x RCR = 5									
k = 0.60	41	29	22	39	28	21	35	26	20	12
0.80	50	37	29	47	35	28	42	32	26	17
1.00	57	44	36	54	42	35	48	40	32	21
1.25	64	52	43	61	49	41	54	44	38	25
1.50	70	57	48	65	54	46	58	49	42	28
2.00	77	66	57	72	62	55	63	55	49	32
2.50	82	71	63	77	67	60	67	59	54	35
3.00	86	76	69	80	72	65	70	63	58	38
4.00	91	82	76	85	77	71	73	68	63	41
5.00	94	87	81	87	81	76	76	71	67	44
ROOM INDEX	UF(total)									Direct
According to DIN EN 13032-2 2004			Suspended				SHRNOM = 1.25			

C Range: 0 - 360DEG
 C Interval: 15.0DEG
 Test Speed: HIGH
 Temperature:24.5°C
 Operators:Dingmin Zhang
 Test Date:2025-12-05

γ Range: 0 - 180DEG
 γ Interval: 0.5DEG
 Test System:EVERFINE GO-R5000_V2 SYSTEM V2.00.463
 Humidity:65.0%
 Test Distance:30.000m [K=0.9305]
 Remarks:

ISOCANDELA DIAGRAM

Test:U:120.31V I:0.5349A P:64.122W PF:0.9964 Freq:60.01Hz Lamp Flux:551.913x1 lm		
NAME:	TYPE:	WEIGHT:
SPEC.:	DIM.:	SERIAL No.:
MFR.:	SUR.:	Shielding Angle:



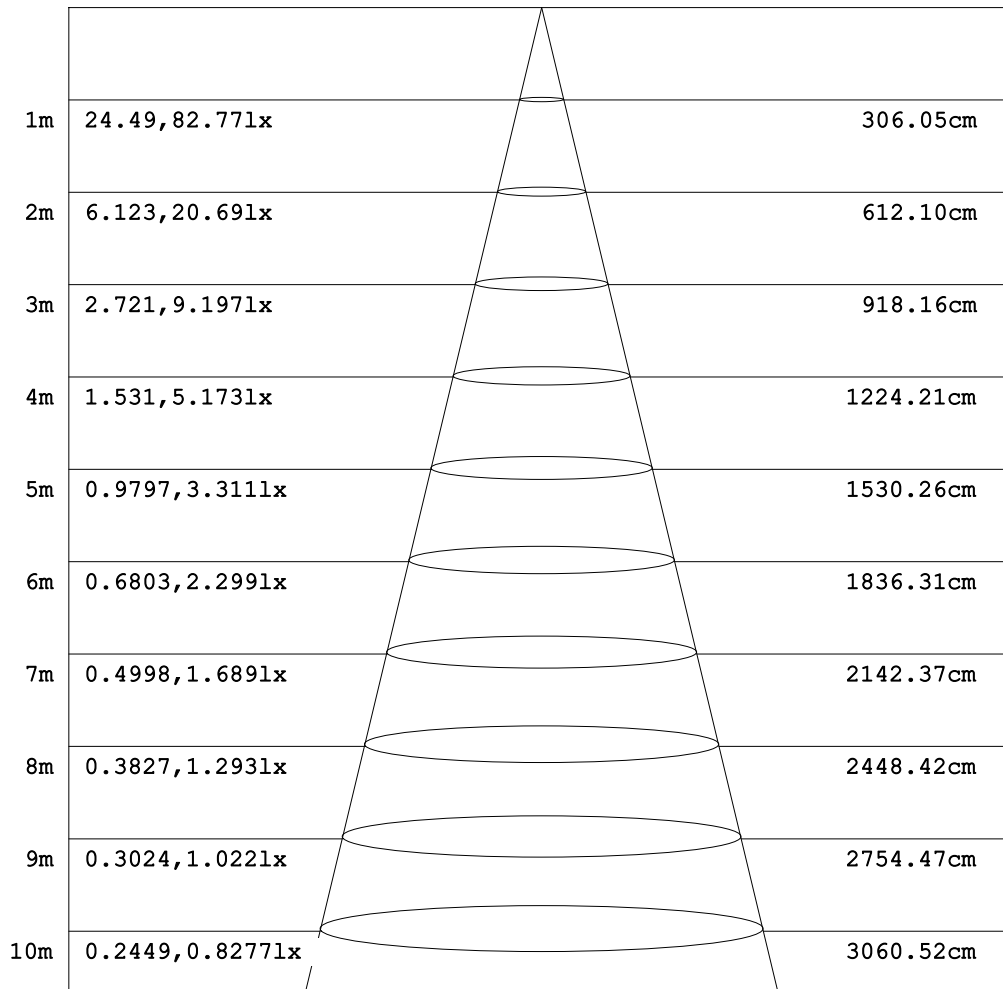
C Range: 0 - 360DEG
 C Interval: 15.0DEG
 Test Speed: HIGH
 Temperature:24.5°C
 Operators:Dingmin Zhang
 Test Date:2025-12-05

γ Range: 0 - 180DEG
 γ Interval: 0.5DEG
 Test System:EVERFINE GO-R5000_V2 SYSTEM V2.00.463
 Humidity:65.0%
 Test Distance:30.000m [K=0.9305]
 Remarks:

AAI Figure

Test:U:120.31V I:0.5349A P:64.122W PF:0.9964 Freq:60.01Hz Lamp Flux:551.913x1 lm		
NAME:	TYPE:	WEIGHT:
SPEC.:	DIM.:	SERIAL No.:
MFR.:	SUR.:	Shielding Angle:

Flux out:182.4 lm



Height Eavg, Emax Angle:113.67deg Diameter

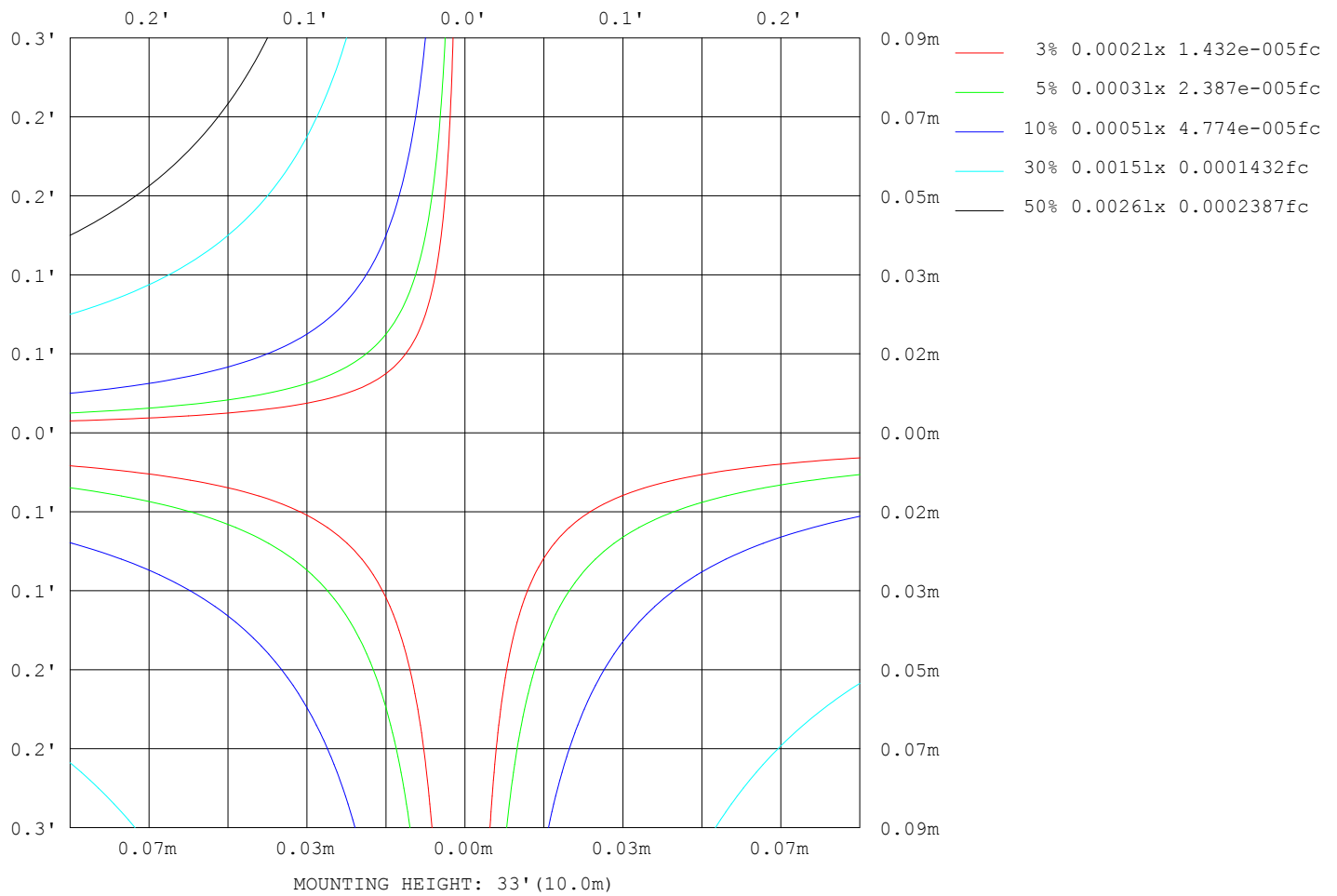
Note:The Curves indicate the illuminated area and the average illumination when the luminaire is at different distance.

C Range: 0 - 360DEG
C Interval: 15.0DEG
Test Speed: HIGH
Temperature:24.5°C
Operators:Dingmin Zhang
Test Date:2025-12-05

γ Range: 0 - 180DEG
γ Interval: 0.5DEG
Test System:EVERFINE GO-R5000_V2 SYSTEM V2.00.463
Humidity:65.0%
Test Distance:30.000m [K=0.9305]
Remarks:

ISOLUX DIAGRAM

Test:U:120.31V I:0.5349A P:64.122W PF:0.9964 Freq:60.01Hz Lamp Flux:551.913x1 lm		
NAME:	TYPE:	WEIGHT:
SPEC.:	DIM.:	SERIAL No.:
MFR.:	SUR.:	Shielding Angle:



C Range: 0 - 360DEG
 C Interval: 15.0DEG
 Test Speed: HIGH
 Temperature:24.5°C
 Operators:Dingmin Zhang
 Test Date:2025-12-05

γ Range: 0 - 180DEG
 γ Interval: 0.5DEG
 Test System:EVERFINE GO-R5000_V2 SYSTEM V2.00.463
 Humidity:65.0%
 Test Distance:30.000m [K=0.9305]
 Remarks:

LED Avg.L Report

Test:U:120.31V I:0.5349A P:64.122W PF:0.9964 Freq:60.01Hz Lamp Flux:551.913x1 lm		
NAME:	TYPE:	WEIGHT:
SPEC.:	DIM.:	SERIAL No.:
MFR.:	SUR.:	Shielding Angle:

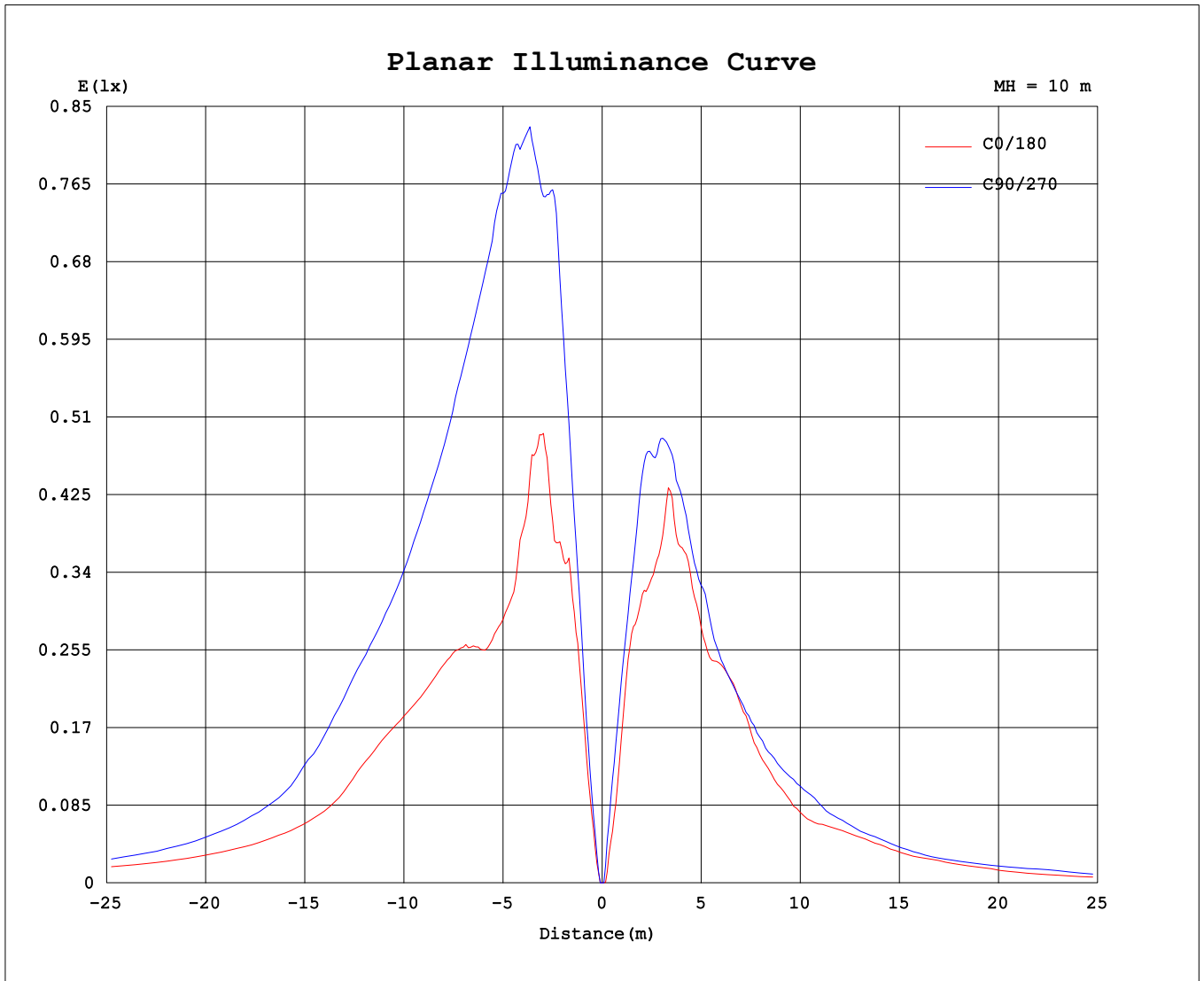
AvgL	cd/m2
L_0~180 (65) av	112
L_0~180 (75) av	146
L_0~180 (85) av	353
L_90~270 (65) av	175
L_90~270 (75) av	210
L_90~270 (85) av	495
L_45 (65) av	241
L_45 (75) av	328
L_45 (85) av	796

Standard: GB/T 29293-2012

C Range: 0 - 360DEG
 C Interval: 15.0DEG
 Test Speed: HIGH
 Temperature:24.5°C
 Operators:Dingmin Zhang
 Test Date:2025-12-05

γ Range: 0 - 180DEG
 γ Interval: 0.5DEG
 Test System:EVERFINE GO-R5000_V2 SYSTEM V2.00.463
 Humidity:65.0%
 Test Distance:30.000m [K=0.9305]
 Remarks:

Planar Illuminance Curve



C Range: 0 - 360DEG
C Interval: 15.0DEG
Test Speed: HIGH
Temperature: 24.5°C
Operators: Dingmin Zhang
Test Date: 2025-12-05

γ Range: 0 - 180DEG
γ Interval: 0.5DEG
Test System: EVERFINE GO-R5000_V2 SYSTEM V2.00.463
Humidity: 65.0%
Test Distance: 30.000m [K=0.9305]
Remarks:

LUMINOUS DISTRIBUTION INTENSITY DATA

Test:U:120.31V I:0.5349A P:64.122W PF:0.9964 Freq:60.01Hz Lamp Flux:551.913x1 lm		
NAME:	TYPE:	WEIGHT:
SPEC.:	DIM.:	SERIAL No.:
MFR.:	SUR.:	Shielding Angle:

Table--1

UNIT: cd

C (DEG) γ (DEG)	0	15	30	45	60	75	90	105	120	135	150	165	180	195	210	225	240	255	270
0	0.00	0.00	0.00	0.00	0.00	0.00	0.00	0.00	0.00	0.00	0.01	0.00	0.00	0.00	0.00	0.00	0.00	0.00	0.00
5	16.8	17.5	17.3	16.0	17.7	18.4	21.4	22.3	15.7	16.5	19.8	18.6	13.4	15.8	15.6	12.7	13.1	16.1	19.9
10	36.7	48.2	47.4	45.0	46.2	51.3	55.9	53.8	40.8	42.7	49.4	36.3	30.3	32.9	32.5	30.5	29.7	35.3	40.9
15	48.8	79.1	80.7	76.5	79.7	77.2	83.6	81.7	69.0	64.6	69.8	54.4	38.4	42.2	46.0	43.7	43.9	50.4	51.6
20	53.7	97.0	96.6	85.5	77.9	89.1	99.8	92.4	82.0	90.5	91.5	82.3	47.9	54.5	59.6	58.7	51.0	56.7	55.3
25	41.2	96.0	102	97.0	86.2	90.4	105	96.4	87.6	93.4	96.6	85.7	42.0	56.1	62.0	61.6	55.4	59.2	47.0
30	39.7	102	108	96.8	85.5	93.7	105	94.9	86.7	97.4	106	89.4	37.3	59.0	62.6	60.6	53.7	51.1	39.9
35	47.0	105	109	98.8	90.6	95.0	103	97.9	88.2	97.9	106	95.7	35.4	53.9	60.4	54.9	46.0	38.8	36.3
40	50.4	112	110	99.6	91.0	94.6	99.7	96.1	87.1	96.6	106	93.9	27.9	50.0	52.2	45.4	38.7	33.6	31.9
45	51.6	109	109	98.9	85.4	91.1	96.7	93.7	85.5	95.2	104	95.4	21.8	42.1	44.4	40.1	34.7	27.8	30.0
50	50.3	105	106	88.7	80.5	82.5	94.2	88.8	79.9	91.4	102	95.0	22.1	38.8	42.3	37.2	29.6	24.6	26.6
55	39.6	93.0	96.0	78.7	72.3	74.7	79.9	75.7	74.7	85.0	94.8	90.2	21.1	39.2	41.3	36.6	26.4	22.6	24.3
60	35.4	86.6	86.0	73.5	68.1	67.6	62.1	68.6	71.7	82.5	89.2	85.9	18.1	41.7	37.5	37.0	21.9	20.2	20.9
65	33.6	81.4	73.6	62.8	64.3	57.2	53.5	67.0	69.8	83.5	84.2	86.2	14.1	40.7	33.7	27.9	19.7	19.9	20.9
70	33.3	69.2	66.6	57.5	59.0	49.1	48.0	57.8	70.9	80.3	82.2	86.7	12.0	32.4	29.5	22.8	18.5	18.1	17.7
75	27.1	60.9	55.5	53.1	51.6	40.9	37.8	52.1	72.1	77.8	77.5	77.8	10.8	23.7	21.4	19.1	16.8	16.3	16.8
80	21.7	57.0	46.7	49.8	45.2	36.5	33.8	47.0	66.1	70.1	68.3	73.1	9.84	22.5	16.7	16.4	16.1	15.5	16.9
85	22.9	52.1	41.0	44.0	46.5	33.8	28.8	41.3	63.3	63.9	63.0	64.4	8.04	20.1	14.4	12.7	15.7	14.7	14.6
90	21.9	50.2	41.8	44.6	46.2	32.1	30.0	42.3	61.6	58.6	54.8	63.7	6.86	17.9	14.4	10.4	13.0	13.6	13.0
95	22.1	52.7	45.8	42.9	44.1	33.0	30.8	42.8	64.3	55.5	52.6	64.6	5.36	15.5	13.2	10.9	12.4	13.5	13.9
100	20.4	60.5	45.5	43.5	46.9	36.7	31.4	41.5	55.2	54.0	53.4	64.0	4.28	17.3	12.2	9.04	10.5	15.0	14.9
105	23.0	59.4	46.3	45.0	45.0	42.9	34.6	42.8	53.4	51.2	54.8	62.9	4.69	19.4	10.6	6.37	8.79	13.6	17.6
110	23.3	57.2	51.0	47.0	45.6	44.6	42.5	47.9	50.9	51.9	58.6	69.0	8.04	18.5	8.13	5.54	10.4	12.9	19.7
115	20.8	58.9	61.7	51.1	49.2	48.9	47.1	51.1	50.0	52.0	61.0	68.0	7.47	20.0	7.87	5.63	8.88	13.8	19.4
120	19.3	65.9	69.7	57.4	50.8	50.9	49.8	49.6	49.5	53.9	63.0	66.4	5.10	21.1	7.39	4.25	7.80	14.6	19.6
125	18.1	68.6	71.4	63.0	54.8	54.9	53.1	50.2	48.8	56.0	66.9	69.4	3.61	21.4	7.53	2.77	7.19	15.0	20.9
130	16.3	72.0	73.2	65.4	59.5	65.0	53.5	53.3	50.6	60.7	68.9	64.2	7.47	24.3	8.29	2.81	5.86	14.7	22.3
135	15.1	73.8	75.8	70.0	62.7	71.3	62.0	55.8	54.5	64.8	68.0	57.8	5.48	27.8	10.1	2.68	5.61	15.7	23.3
140	11.9	73.0	76.0	72.2	64.4	72.0	71.0	64.6	64.5	69.3	71.4	57.3	0.00	30.6	12.4	2.82	6.01	16.5	25.0
145	10.3	76.8	79.9	80.1	70.8	77.3	86.0	75.9	78.4	84.7	79.8	63.9	0.00	31.1	12.9	3.18	7.20	17.8	26.8
150	9.46	73.5	84.4	78.4	68.5	78.6	90.4	82.1	82.1	93.2	89.4	69.3	0.00	31.4	16.3	5.71	8.37	17.5	25.4
155	13.7	78.2	89.4	88.0	67.0	81.6	86.9	91.2	75.1	95.3	93.6	63.8	0.00	31.7	23.8	11.4	9.41	16.4	24.1
160	11.1	67.7	81.3	76.2	70.8	81.0	84.4	83.9	87.4	81.2	78.7	57.0	0.00	12.0	26.5	16.1	13.0	18.4	27.5
165	5.69	42.1	58.9	67.9	68.3	67.4	65.0	61.2	63.6	69.1	62.0	38.3	0.00	0.00	31.0	14.6	19.3	24.8	38.6
170	7.12	13.4	28.9	42.3	43.0	44.2	44.5	40.4	38.2	37.0	31.6	19.5	0.00	0.00	7.09	20.7	17.7	24.6	31.1
175	1.17	0.01	3.62	9.05	14.2	14.1	14.1	13.7	12.1	10.8	5.90	2.93	0.00	0.00	0.00	2.39	7.09	12.0	13.9
180	0.00	0.00	0.00	0.00	0.00	0.00	0.00	0.00	0.00	0.00	0.00	0.00	0.00	0.00	0.00	0.00	0.00	0.00	0.00

C Range: 0 - 360DEG
 C Interval: 15.0DEG
 Test Speed: HIGH
 Temperature:24.5°C
 Operators:Dingmin Zhang
 Test Date:2025-12-05

γ Range: 0 - 180DEG
 γ Interval: 0.5DEG
 Test System:EVERFINE GO-R5000_V2 SYSTEM V2.00.463
 Humidity:65.0%
 Test Distance:30.000m [K=0.9305]
 Remarks:

LUMINOUS DISTRIBUTION INTENSITY DATA

Test:U:120.31V I:0.5349A P:64.122W PF:0.9964 Freq:60.01Hz		
Lamp Flux:551.913x1 lm		
NAME:	TYPE:	WEIGHT:
SPEC.:	DIM.:	SERIAL No.:
MFR.:	SUR.:	Shielding Angle:

Table--2

UNIT: cd

C (DEG) \ γ (DEG)	285	300	315	330	345														
0	0.00	0.00	0.00	0.01	0.00														
5	21.4	19.6	20.3	21.1	17.3														
10	39.7	40.9	47.4	53.0	46.6														
15	46.4	39.7	51.3	66.4	57.7														
20	51.0	45.6	51.1	71.1	60.5														
25	50.4	49.4	45.8	70.1	61.9														
30	43.4	43.7	42.3	57.5	55.3														
35	39.9	40.1	39.3	49.6	48.5														
40	37.2	37.7	38.8	45.1	45.4														
45	33.3	36.1	39.5	43.2	46.2														
50	29.3	34.4	39.9	43.0	43.9														
55	26.8	32.1	40.0	42.0	39.3														
60	25.4	29.2	37.2	40.2	36.7														
65	23.4	24.6	30.6	37.1	35.8														
70	22.5	22.3	24.1	31.3	31.2														
75	21.1	22.3	20.5	25.5	27.9														
80	19.0	22.8	19.1	20.9	26.7														
85	18.8	22.9	18.8	18.6	24.2														
90	17.9	22.8	16.6	17.2	19.9														
95	19.7	22.2	15.1	14.5	16.7														
100	20.4	21.5	15.0	13.0	19.4														
105	20.2	20.0	14.7	14.1	22.6														
110	20.7	18.1	15.4	18.2	23.6														
115	19.9	20.0	20.6	26.7	22.9														
120	19.6	22.3	26.2	29.3	25.0														
125	21.7	26.2	32.0	32.7	27.2														
130	25.0	31.2	34.0	35.7	30.1														
135	27.4	33.2	38.4	36.3	30.2														
140	29.2	35.8	37.5	36.2	30.7														
145	32.0	39.4	39.3	34.2	31.8														
150	37.2	42.3	41.7	48.7	33.8														
155	42.8	44.7	48.3	52.5	34.8														
160	48.1	53.8	43.3	49.8	40.2														
165	51.4	46.5	40.2	40.6	33.1														
170	34.4	32.9	31.1	26.8	17.3														
175	13.3	11.0	9.47	6.20	0.00														
180	0.00	0.00	0.00	0.00	0.00														

C Range: 0 - 360DEG
 C Interval: 15.0DEG
 Test Speed: HIGH
 Temperature:24.5°C
 Operators:Dingmin Zhang
 Test Date:2025-12-05

γ Range: 0 - 180DEG
 γ Interval: 0.5DEG
 Test System:EVERFINE GO-R5000_V2 SYSTEM V2.00.463
 Humidity:65.0%
 Test Distance:30.000m [K=0.9305]
 Remarks: