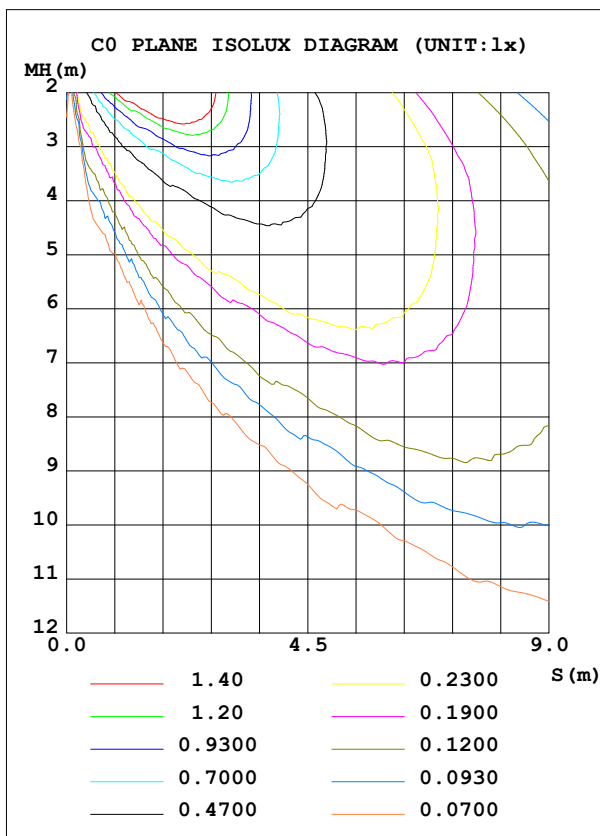
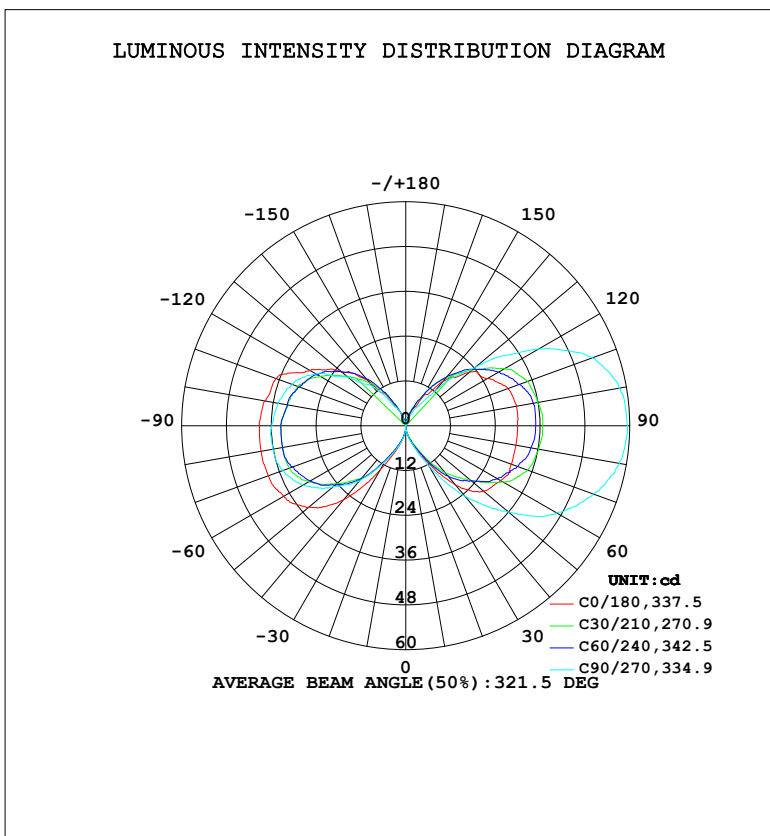




LUMINAIRE PHOTOMETRIC TEST REPORT

Test:U:120.36V I:0.1553A P:10.134W PF:0.5420 Freq:60.01Hz Lamp Flux:323.45lx1 lm		
NAME: Monarch HF7190-CH	TYPE:	WEIGHT:
SPEC.:	DIM.:	SERIAL No.:
MFR.: Avenue Lighting	SUR.:	Shielding Angle:

DATA OF LAMP		PHOTOMETRIC DATA			
MODEL	HF7190-CH	Imax (cd)	59.43	S/MH (C0/180)	10.19
NOMINAL POWER (W)		LOR (%)	100.0	S/MH (C90/270)	16.84
RATED VOLTAGE (V)	120	TOTAL FLUX (lm)	323.45	η UP, DN (C0-180)	27.8, 28.4
NOMINAL FLUX (lm)	323.451	CIE CLASS	DIFFUSE	η UP, DN (C180-360)	20.8, 23.0
LAMPS INSIDE	1	η up (%)	48.6	CIBSE SHR NOM	1.50
TEST VOLTAGE (V)	120.358	η down (%)	51.4	CIBSE SHR MAX	1.55



C Range: 0 - 360DEG
 C Interval: 15.0DEG
 Test Speed: HIGH
 Temperature: 24.5°C
 Operators: Dingmin Zhang
 Test Date: 2025-11-15

γ Range: 0 - 180DEG
 γ Interval: 0.5DEG
 Test System: EVERFINE GO-R5000_V2 SYSTEM V2.00.463
 Humidity: 65.0%
 Test Distance: 30.000m [K=0.9305]
 Remarks:

ZONAL FLUX DIAGRAM

ZONAL FLUX DIAGRAM:

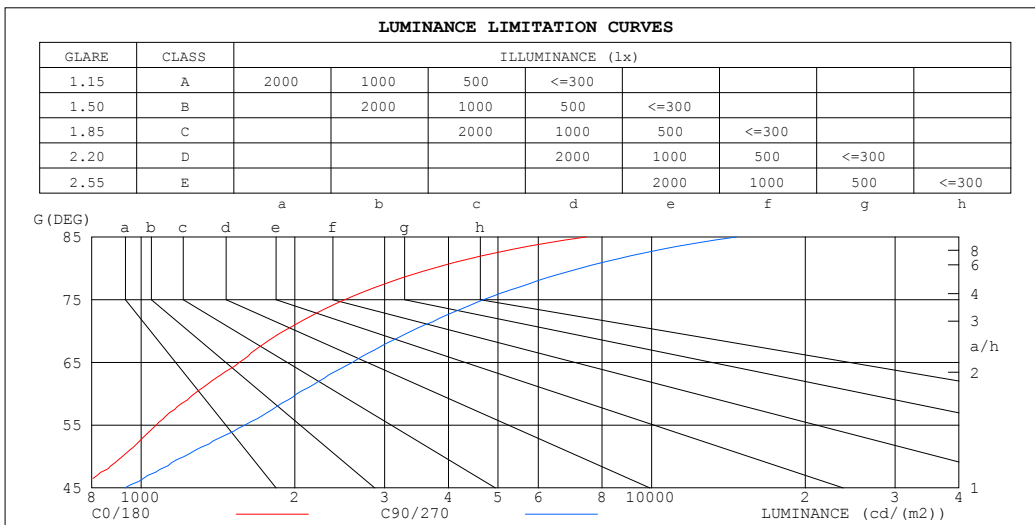
γ	C0	C45	C90	C135	C180	C225	C270	C315	γ	Φ zone	Φ total	$\%lum, lamp$
10	1.762	1.509	1.758	1.339	2.187	2.424	2.759	1.757	0- 10	0.1275	0.1275	0.04,0.04
20	5.351	3.935	5.109	2.929	6.379	5.019	6.026	3.183	10- 20	0.9529	1.080	0.33,0.33
30	10.53	8.552	12.30	7.362	13.49	9.617	10.97	5.953	20- 30	3.295	4.375	1.35,1.35
40	20.88	15.76	24.61	15.23	25.74	16.91	19.25	10.22	30- 40	8.912	13.29	4.11,4.11
50	27.28	22.60	36.06	22.75	33.99	23.52	25.45	14.90	40- 50	16.96	30.25	9.35,9.35
60	29.38	29.23	46.63	29.55	37.76	30.13	31.79	19.01	50- 60	25.45	55.70	17.2,17.2
70	30.05	34.46	53.49	34.82	39.17	33.40	34.99	21.85	60- 70	32.93	88.63	27.4,27.4
80	29.97	36.75	58.09	38.17	39.36	34.07	36.10	22.77	70- 80	37.73	126.4	39.1,39.1
90	29.97	37.66	59.34	39.01	39.22	33.75	35.89	22.10	80- 90	39.86	166.2	51.4,51.4
100	30.13	37.66	58.01	38.26	38.33	32.06	34.72	21.34	90-100	39.56	205.8	63.6,63.6
110	29.17	35.57	53.24	34.90	37.08	30.82	32.39	19.17	100-110	36.81	242.6	75,75
120	25.38	30.45	41.16	29.66	29.63	26.79	27.79	16.57	110-120	31.48	274.1	84.7,84.7
130	22.52	23.19	24.28	22.53	22.43	20.27	20.18	13.39	120-130	23.57	297.6	92,92
140	15.57	15.91	11.57	14.40	16.07	14.49	13.39	9.292	130-140	15.05	312.7	96.7,96.7
150	8.217	8.955	5.608	7.297	7.509	8.054	5.778	5.431	140-150	7.631	320.3	99,99
160	3.432	4.182	2.340	2.353	2.507	3.277	3.181	1.924	150-160	2.642	323.0	99.8,99.8
170	0.3381	0.8394	0	0	0	0.0117	0	0	160-170	0.4920	323.4	100,100
180	0	0	0	0	0	0	0	0	170-180	0.0034	323.5	100,100
DEG	LUMINOUS INTENSITY:cd									UNIT:lm		

C Range: 0 - 360DEG
 C Interval: 15.0DEG
 Test Speed: HIGH
 Temperature:24.5°C
 Operators:Dingmin Zhang
 Test Date:2025-11-15

γ Range: 0 - 180DEG
 γ Interval: 0.5DEG
 Test System:EVERFINE GO-R5000_V2 SYSTEM V2.00.463
 Humidity:65.0%
 Test Distance:30.000m [K=0.9305]
 Remarks:

LUMINANCE LIMITATION CURVES

Test:U:120.36V I:0.1553A P:10.134W PF:0.5420 Freq:60.01Hz Lamp Flux:323.45lx1 lm		
NAME:	TYPE:	WEIGHT:
SPEC.:	DIM.:	SERIAL No.:
MFR.:	SUR.:	Shielding Angle:



LUMINANCE cd/(m2)		
G (DEG)	C0/180	C90/270
85	7443	14656
80	3736	7241
75	2506	4683
70	1902	3385
65	1556	2594
60	1272	2019
55	1071	1595
50	919	1214
45	755	930

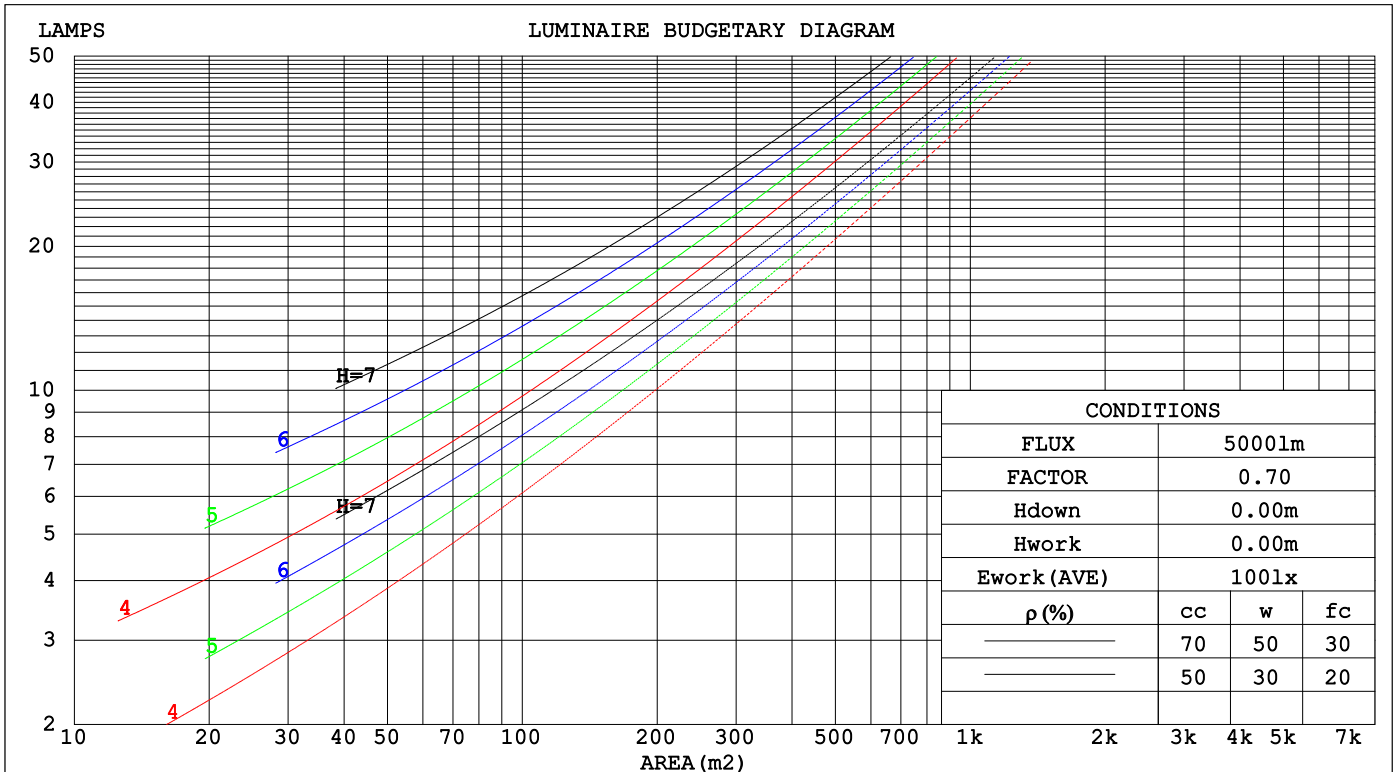
C Range: 0 - 360DEG
 C Interval: 15.0DEG
 Test Speed: HIGH
 Temperature: 24.5°C
 Operators: Dingmin Zhang
 Test Date: 2025-11-15

γ Range: 0 - 180DEG
 γ Interval: 0.5DEG
 Test System: EVERFINE GO-R5000_V2 SYSTEM V2.00.463
 Humidity: 65.0%
 Test Distance: 30.000m [K=0.9305]
 Remarks:

CU AND LUMINAIRE BUDGETARY ESTIMATE DIAGRAM

Test:U:120.36V I:0.1553A P:10.134W PF:0.5420 Freq:60.01Hz		
Lamp Flux:323.45lx1 lm		
NAME:	TYPE:	WEIGHT:
SPEC.:	DIM.:	SERIAL No.:
MFR.:	SUR.:	Shielding Angle:

pcc	80%			70%			50%			30%			10%			0
pw	50%	30%	10%	50%	30%	10%	50%	30%	10%	50%	30%	10%	50%	30%	10%	0
pfc	20%			20%			20%			20%			20%			0
RCR	RCR:Room Cavity Ratio						Coefficients of Utilization(CU)									
0.0	1.07	1.07	1.07	.99	.99	.99	.84	.84	.84	.70	.70	.70	.57	.57	.57	.51
1.0	.84	.78	.72	.77	.72	.67	.64	.60	.56	.52	.48	.45	.41	.38	.36	.30
2.0	.70	.61	.54	.64	.56	.49	.52	.46	.41	.42	.37	.33	.32	.28	.25	.20
3.0	.59	.50	.42	.54	.45	.38	.44	.37	.31	.35	.29	.25	.26	.22	.18	.14
4.0	.51	.41	.34	.47	.38	.31	.38	.31	.25	.30	.24	.20	.22	.18	.14	.10
5.0	.45	.35	.27	.41	.32	.25	.33	.26	.20	.26	.20	.16	.19	.15	.11	.08
6.0	.40	.30	.23	.36	.27	.21	.29	.22	.17	.23	.17	.13	.17	.13	.09	.06
7.0	.35	.26	.19	.32	.24	.18	.26	.19	.14	.20	.15	.11	.15	.11	.08	.05
8.0	.32	.23	.17	.29	.21	.15	.23	.17	.12	.18	.13	.09	.14	.09	.06	.04
9.0	.29	.20	.14	.26	.18	.13	.21	.15	.10	.17	.12	.08	.13	.08	.05	.03
10.0	.26	.18	.13	.24	.16	.11	.19	.13	.09	.15	.10	.07	.12	.08	.05	.02



C Range: 0 - 360DEG
 C Interval: 15.0DEG
 Test Speed: HIGH
 Temperature:24.5°C
 Operators:Dingmin Zhang
 Test Date:2025-11-15

γ Range: 0 - 180DEG
 γ Interval: 0.5DEG
 Test System:EVERFINE GO-R5000_V2 SYSTEM V2.00.463
 Humidity:65.0%
 Test Distance:30.000m [K=0.9305]
 Remarks:

WEC AND CCEC

Test:U:120.36V I:0.1553A P:10.134W PF:0.5420 Freq:60.01Hz								
Lamp Flux:323.451x1 lm								
NAME:			TYPE:			WEIGHT:		
SPEC.:			DIM.:			SERIAL No.:		
MFR.:			SUR.:			Shielding Angle:		

ρ _{cc}	80%			70%			50%			30%			10%			0
ρ _w	50%	30%	10%	50%	30%	10%	50%	30%	10%	50%	30%	10%	50%	30%	10%	0
ρ _{fc}	20%			20%			20%			20%			20%			0
RCR	RCR:Room Cavity Ratio						Wall Exitance Coefficients(WEC)									
0.0																
1.0	.458	.260	.082	.435	.248	.079	.394	.226	.072	.356	.205	.066	.321	.186	.060	
2.0	.374	.205	.063	.354	.195	.060	.316	.176	.055	.281	.157	.049	.248	.140	.044	
3.0	.322	.171	.051	.303	.162	.049	.268	.145	.044	.236	.129	.040	.206	.114	.035	
4.0	.283	.147	.043	.267	.139	.041	.235	.124	.037	.205	.110	.033	.178	.096	.029	
5.0	.254	.129	.037	.238	.122	.036	.209	.109	.032	.182	.096	.029	.156	.083	.025	
6.0	.230	.115	.033	.215	.109	.031	.188	.097	.028	.163	.085	.025	.140	.073	.022	
7.0	.210	.104	.029	.197	.098	.028	.172	.087	.025	.148	.076	.022	.126	.066	.019	
8.0	.193	.094	.027	.181	.089	.025	.158	.079	.023	.136	.069	.020	.116	.059	.017	
9.0	.179	.087	.024	.168	.082	.023	.146	.072	.020	.126	.063	.018	.107	.054	.016	
10.0	.167	.080	.022	.156	.075	.021	.136	.067	.019	.117	.058	.016	.099	.050	.014	

ρ _{cc}	80%			70%			50%			30%			10%			0
ρ _w	50%	30%	10%	50%	30%	10%	50%	30%	10%	50%	30%	10%	50%	30%	10%	0
ρ _{fc}	20%			20%			20%			20%			20%			0
RCR	RCR:Room Cavity Ratio						Ceiling Cavity Exitance Coefficients(CCEC)									
0.0	.561	.561	.561	.479	.479	.479	.327	.327	.327	.188	.188	.188	.060	.060	.060	
1.0	.564	.528	.496	.483	.453	.427	.330	.312	.295	.190	.181	.172	.061	.058	.056	
2.0	.559	.507	.464	.479	.437	.401	.328	.302	.280	.189	.176	.164	.061	.057	.053	
3.0	.552	.493	.445	.474	.425	.386	.325	.295	.271	.188	.172	.159	.060	.056	.052	
4.0	.545	.481	.433	.468	.416	.376	.322	.290	.265	.186	.170	.157	.060	.055	.052	
5.0	.537	.472	.425	.461	.409	.369	.318	.286	.261	.184	.168	.155	.059	.055	.051	
6.0	.530	.465	.419	.455	.403	.365	.314	.282	.258	.182	.166	.153	.059	.054	.051	
7.0	.523	.459	.415	.450	.398	.361	.311	.279	.256	.180	.164	.152	.058	.054	.050	
8.0	.516	.454	.412	.444	.394	.359	.307	.276	.255	.179	.163	.152	.058	.053	.050	
9.0	.510	.450	.409	.439	.390	.357	.304	.274	.253	.177	.162	.151	.057	.053	.050	
10.0	.504	.446	.407	.434	.387	.355	.301	.272	.252	.176	.161	.151	.057	.053	.050	

C Range: 0 - 360DEG
 C Interval: 15.0DEG
 Test Speed: HIGH
 Temperature:24.5°C
 Operators:Dingmin Zhang
 Test Date:2025-11-15

γ Range: 0 - 180DEG
 γ Interval: 0.5DEG
 Test System:EVERFINE GO-R5000_V2 SYSTEM V2.00.463
 Humidity:65.0%
 Test Distance:30.000m [K=0.9305]
 Remarks:

UGR(Unified Glare Rating) Table

Test:U:120.36V I:0.1553A P:10.134W PF:0.5420 Freq:60.01Hz										
Lamp Flux:323.45lx1 lm										
NAME:			TYPE:			WEIGHT:				
SPEC.:			DIM.:			SERIAL No.:				
MFR.:			SUR.:			Shielding Angle:				
ceiling/cavity	0.7	0.7	0.5	0.5	0.3	0.7	0.7	0.5	0.5	0.3
walls	0.5	0.3	0.5	0.3	0.3	0.5	0.3	0.5	0.3	0.3
working plane	0.2	0.2	0.2	0.2	0.2	0.2	0.2	0.2	0.2	0.2
Room dimensions	Viewed crosswise					Viewed endwise				
x = 2H y = 2H	10.5	11.6	11.3	12.5	13.7	11.4	12.5	12.2	13.4	14.6
3H	14.2	15.2	15.1	16.2	17.3	15.6	16.7	16.5	17.6	18.8
4H	16.1	17.1	17.0	18.0	19.2	17.9	18.9	18.8	19.9	21.1
6H	18.1	19.0	19.0	20.0	21.2	20.6	21.5	21.5	22.4	23.7
8H	19.2	20.1	20.1	21.0	22.3	22.0	22.9	22.9	23.9	25.1
12H	20.4	21.3	21.3	22.2	23.5	23.6	24.5	24.5	25.4	26.7
4H 2H	11.6	12.6	12.5	13.5	14.7	12.2	13.2	13.0	14.1	15.3
3H	15.4	16.3	16.3	17.3	18.5	16.2	17.1	17.2	18.1	19.3
4H	17.5	18.3	18.5	19.3	20.6	18.6	19.4	19.6	20.4	21.7
6H	19.7	20.5	20.7	21.5	22.7	21.3	22.1	22.3	23.0	24.3
8H	20.9	21.6	21.9	22.6	23.9	22.9	23.5	23.8	24.5	25.8
12H	22.2	22.9	23.2	23.9	25.2	24.6	25.3	25.6	26.3	27.6
8H 4H	18.3	19.0	19.3	20.0	21.3	19.2	19.8	20.1	20.8	22.1
6H	20.8	21.4	21.8	22.4	23.7	21.9	22.5	22.9	23.5	24.9
8H	22.2	22.8	23.2	23.8	25.1	23.6	24.1	24.6	25.1	26.4
12H	23.8	24.3	24.8	25.3	26.7	25.5	26.0	26.5	27.0	28.3
12H 4H	18.5	19.2	19.5	20.2	21.5	19.3	20.0	20.3	21.0	22.3
6H	21.2	21.7	22.2	22.7	24.1	22.2	22.7	23.2	23.7	25.1
8H	22.7	23.2	23.7	24.2	25.6	23.9	24.3	24.9	25.4	26.7
Variations with the observer position at spacings(CIE Pub.117):										
S = 1.0H	+ 0.1 / - 0.1					+ 0.1 / - 0.1				
1.5H	+ 0.3 / - 0.3					+ 0.3 / - 0.2				
2.0H	+ 0.4 / - 0.5					+ 0.5 / - 0.4				

CIE Pub.117, 323.5 lm Total Lamp Luminous Flux Corrected (8log(F/F0) = -3.9)
 Area: 0.0462 m2

C Range: 0 - 360DEG
 C Interval: 15.0DEG
 Test Speed: HIGH
 Temperature:24.5°C
 Operators:Dingmin Zhang
 Test Date:2025-11-15

γ Range: 0 - 180DEG
 γ Interval: 0.5DEG
 Test System:EVERFINE GO-R5000_V2 SYSTEM V2.00.463
 Humidity:65.0%
 Test Distance:30.000m [K=0.9305]
 Remarks:

UTILIZATION FACTORS TABLE

Test:U:120.36V I:0.1553A P:10.134W PF:0.5420 Freq:60.01Hz Lamp Flux:323.451x1 lm		
NAME:	TYPE:	WEIGHT:
SPEC.:	DIM.:	SERIAL No.:
MFR.:	SUR.:	Shielding Angle:

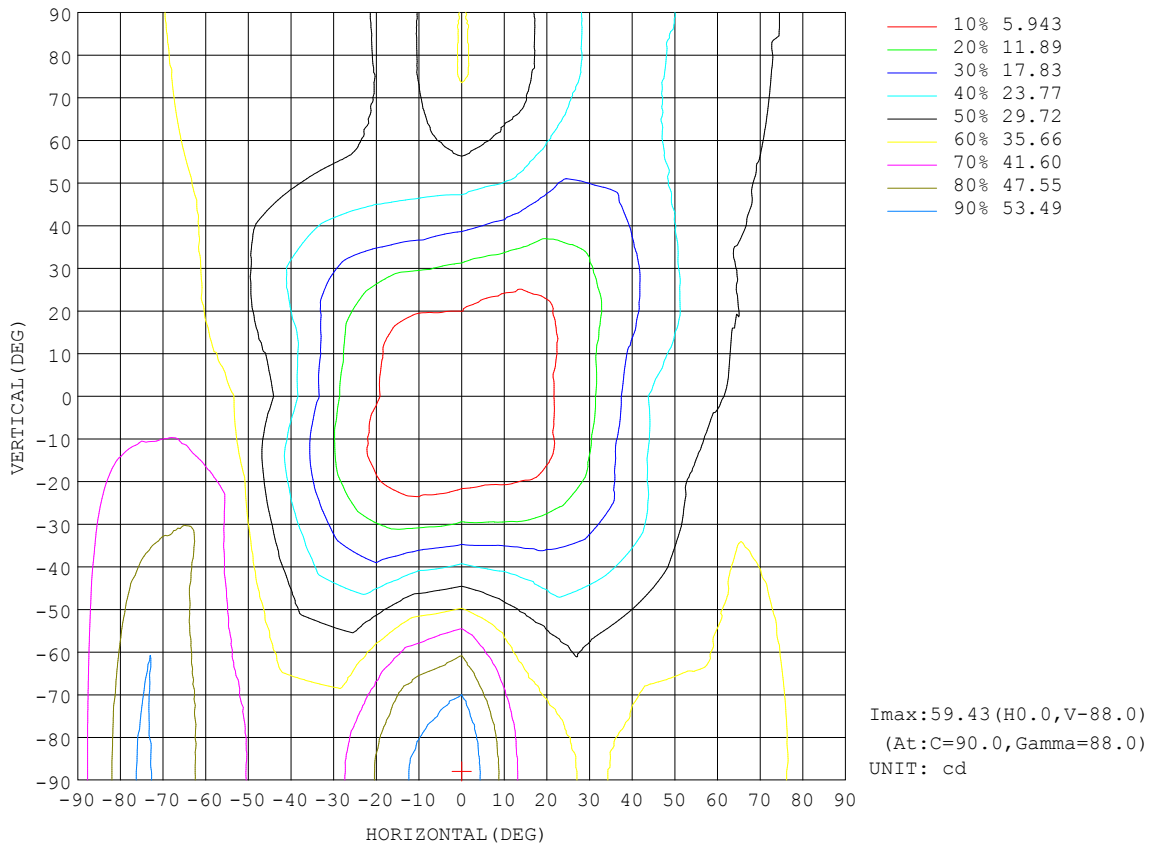
REFLECTANCE										
Ceiling	0.8	0.8	0.8	0.7	0.7	0.7	0.5	0.5	0.5	0
Walls	0.7	0.5	0.3	0.7	0.5	0.3	0.7	0.5	0.3	0
Working plane	0.2	0.2	0.2	0.2	0.2	0.2	0.2	0.2	0.2	0
ROOM INDEX	UTILIZATION FACTORS (PERCENT) k(RI) x RCR = 5									
k = 0.60	32	19	11	31	18	11	27	16	10	3
0.80	41	26	17	38	24	16	33	22	14	5
1.00	48	32	23	45	31	21	39	29	19	8
1.25	55	39	29	51	37	27	44	32	24	10
1.50	60	45	34	56	42	32	48	36	28	13
2.00	68	54	43	63	50	41	53	43	35	17
2.50	74	60	50	68	56	47	57	48	40	21
3.00	78	66	56	72	61	52	61	52	45	23
4.00	84	73	64	77	68	60	65	58	51	28
5.00	87	78	70	81	72	65	68	61	56	31
ROOM INDEX	UF(total)									Direct
According to DIN EN 13032-2 2004			Suspended				SHRNOM = 1.25			

C Range: 0 - 360DEG
 C Interval: 15.0DEG
 Test Speed: HIGH
 Temperature:24.5°C
 Operators:Dingmin Zhang
 Test Date:2025-11-15

γ Range: 0 - 180DEG
 γ Interval: 0.5DEG
 Test System:EVERFINE GO-R5000_V2 SYSTEM V2.00.463
 Humidity:65.0%
 Test Distance:30.000m [K=0.9305]
 Remarks:

ISOCANDELA DIAGRAM

Test:U:120.36V I:0.1553A P:10.134W PF:0.5420 Freq:60.01Hz Lamp Flux:323.45lx1 lm		
NAME:	TYPE:	WEIGHT:
SPEC.:	DIM.:	SERIAL No.:
MFR.:	SUR.:	Shielding Angle:

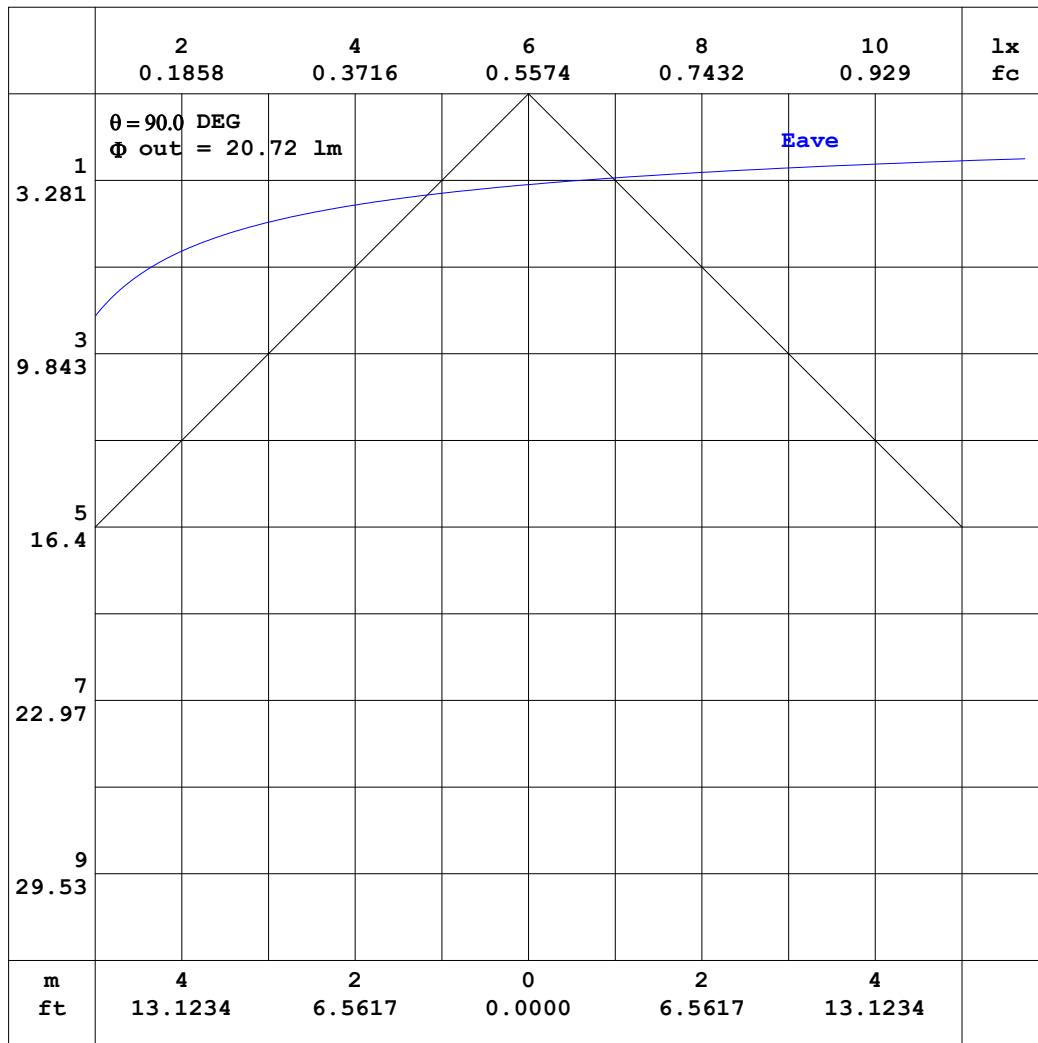


C Range: 0 - 360DEG
C Interval: 15.0DEG
Test Speed: HIGH
Temperature:24.5°C
Operators:Dingmin Zhang
Test Date:2025-11-15

γ Range: 0 - 180DEG
γ Interval: 0.5DEG
Test System:EVERFINE GO-R5000_V2 SYSTEM V2.00.463
Humidity:65.0%
Test Distance:30.000m [K=0.9305]
Remarks:

AAI CURVES

Test:U:120.36V I:0.1553A P:10.134W PF:0.5420 Freq:60.01Hz Lamp Flux:323.45lx1 lm		
NAME:	TYPE:	WEIGHT:
SPEC.:	DIM.:	SERIAL No.:
MFR.:	SUR.:	Shielding Angle:



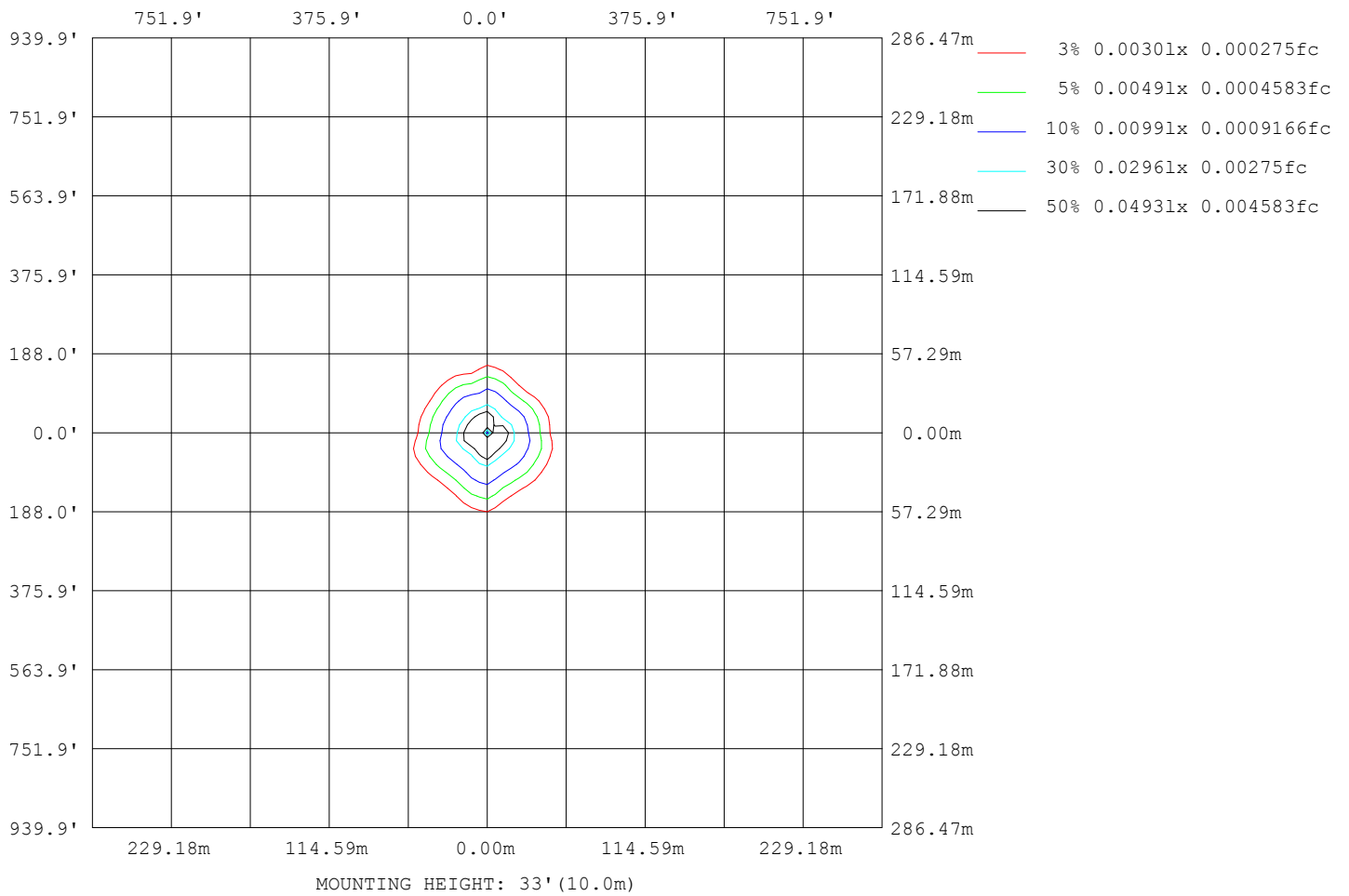
Note: The Curves indicate the illuminated area and the average illumination when the luminaire is at different distance.

C Range: 0 - 360DEG
 C Interval: 15.0DEG
 Test Speed: HIGH
 Temperature: 24.5°C
 Operators: Dingmin Zhang
 Test Date: 2025-11-15

γ Range: 0 - 180DEG
 γ Interval: 0.5DEG
 Test System: EVERFINE GO-R5000_V2 SYSTEM V2.00.463
 Humidity: 65.0%
 Test Distance: 30.000m [K=0.9305]
 Remarks:

ISOLUX DIAGRAM

Test:U:120.36V I:0.1553A P:10.134W PF:0.5420 Freq:60.01Hz Lamp Flux:323.451x1 lm		
NAME:	TYPE:	WEIGHT:
SPEC.:	DIM.:	SERIAL No.:
MFR.:	SUR.:	Shielding Angle:



C Range: 0 - 360DEG
 C Interval: 15.0DEG
 Test Speed: HIGH
 Temperature:24.5°C
 Operators:Dingmin Zhang
 Test Date:2025-11-15

γ Range: 0 - 180DEG
 γ Interval: 0.5DEG
 Test System:EVERFINE GO-R5000_V2 SYSTEM V2.00.463
 Humidity:65.0%
 Test Distance:30.000m [K=0.9305]
 Remarks:

LED Avg.L Report

Test:U:120.36V I:0.1553A P:10.134W PF:0.5420 Freq:60.01Hz Lamp Flux:323.451x1 lm		
NAME:	TYPE:	WEIGHT:
SPEC.:	DIM.:	SERIAL No.:
MFR.:	SUR.:	Shielding Angle:

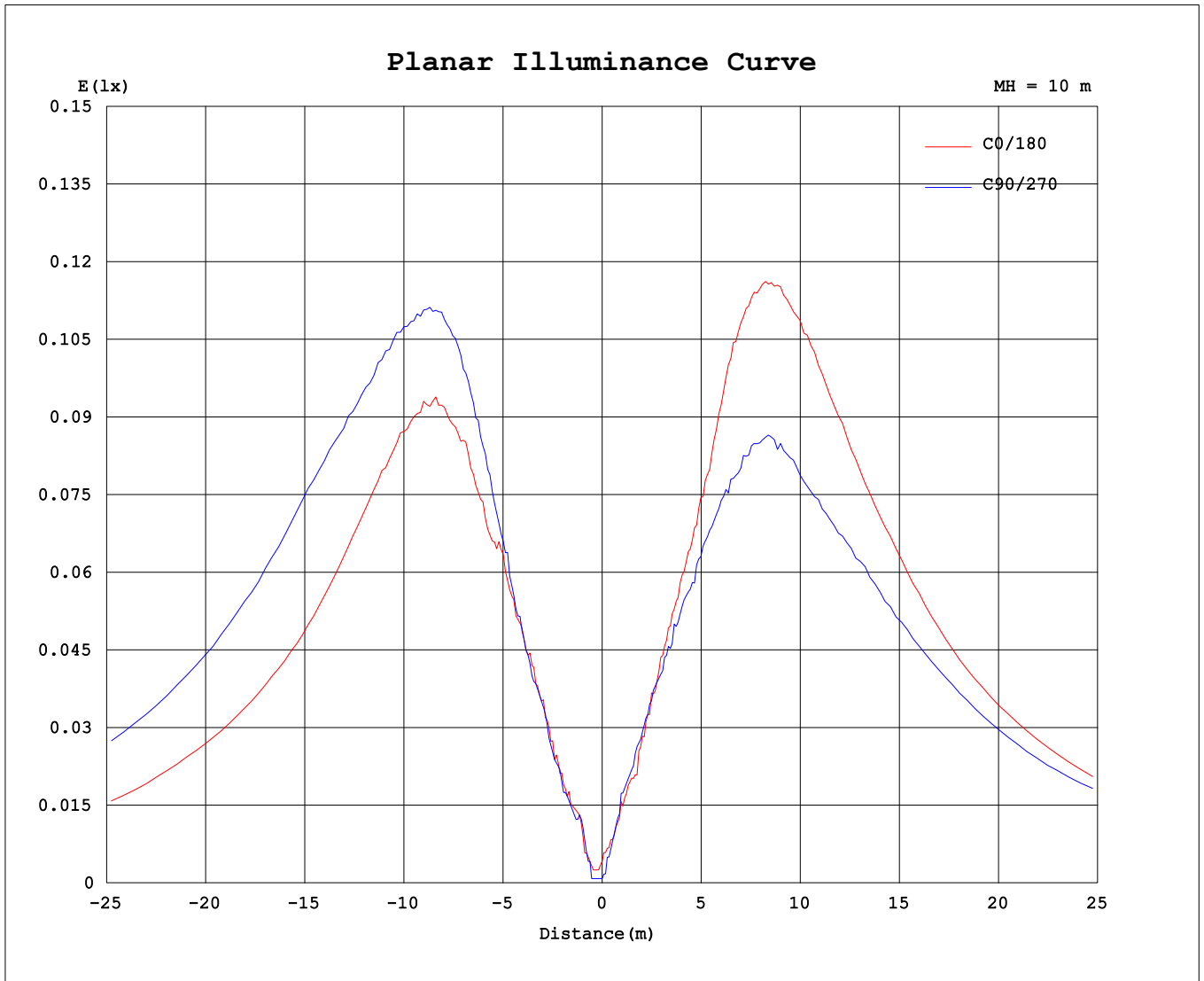
AvgL	cd/m2
L_0~180 (65) av	1773
L_0~180 (75) av	2902
L_0~180 (85) av	8600
L_90~270 (65) av	2157
L_90~270 (75) av	3847
L_90~270 (85) av	11825
L_45 (65) av	1507
L_45 (75) av	2702
L_45 (85) av	8275

Standard: GB/T 29293-2012

C Range: 0 - 360DEG
C Interval: 15.0DEG
Test Speed: HIGH
Temperature:24.5°C
Operators:Dingmin Zhang
Test Date:2025-11-15

γ Range: 0 - 180DEG
γ Interval: 0.5DEG
Test System:EVERFINE GO-R5000_V2 SYSTEM V2.00.463
Humidity:65.0%
Test Distance:30.000m [K=0.9305]
Remarks:

Planar Illuminance Curve



C Range: 0 - 360DEG
C Interval: 15.0DEG
Test Speed: HIGH
Temperature: 24.5°C
Operators: Dingmin Zhang
Test Date: 2025-11-15

γ Range: 0 - 180DEG
γ Interval: 0.5DEG
Test System: EVERFINE GO-R5000_V2 SYSTEM V2.00.463
Humidity: 65.0%
Test Distance: 30.000m [K=0.9305]
Remarks:

LUMINOUS DISTRIBUTION INTENSITY DATA

Test:U:120.36V I:0.1553A P:10.134W PF:0.5420 Freq:60.01Hz		
Lamp Flux:323.451x1 lm		
NAME:	TYPE:	WEIGHT:
SPEC.:	DIM.:	SERIAL No.:
MFR.:	SUR.:	Shielding Angle:

Table--1

UNIT: cd

C (DEG) \ γ (DEG)	0	15	30	45	60	75	90	105	120	135	150	165	180	195	210	225	240	255	270
0	0.42	0.42	0.42	0.33	0.18	0.42	0.09	0.00	0.00	0.08	0.25	0.08	0.42	0.42	0.42	0.33	0.18	0.42	0.09
5	0.59	0.68	0.50	0.54	0.51	0.68	0.84	0.84	0.51	0.49	0.50	0.43	1.27	1.26	1.35	1.34	1.51	1.50	1.35
10	1.76	1.87	1.60	1.51	1.63	1.84	1.76	1.59	1.53	1.34	1.28	1.42	2.19	2.52	2.52	2.42	2.43	2.59	2.76
15	3.34	3.20	2.68	2.51	2.93	3.18	3.11	2.60	1.98	1.62	2.23	2.86	4.12	4.10	3.77	3.68	3.69	4.02	4.22
20	5.35	5.19	4.09	3.93	4.60	5.20	5.11	4.27	3.18	2.93	3.68	5.19	6.38	6.19	5.21	5.02	5.27	5.85	6.03
25	7.61	7.53	5.93	5.61	6.64	7.96	7.96	6.78	5.28	4.61	5.53	7.30	9.21	8.97	7.45	6.94	7.37	8.01	7.78
30	10.5	10.5	8.77	8.55	9.54	11.7	12.3	10.4	7.98	7.36	8.54	11.2	13.5	13.0	10.8	9.62	10.1	11.5	11.0
35	15.6	15.1	12.6	12.4	13.6	17.0	18.1	15.8	12.1	11.3	12.7	15.8	19.7	18.6	14.8	13.3	14.3	15.6	14.6
40	20.9	19.8	16.5	15.8	17.5	21.8	24.6	21.6	15.4	15.2	17.5	20.5	25.7	23.9	18.2	16.9	18.5	19.6	19.2
45	24.7	23.4	19.5	19.3	20.7	26.1	30.4	27.1	19.1	19.1	22.4	25.6	30.7	27.6	21.0	20.5	22.0	22.5	22.3
50	27.3	26.7	22.8	22.6	22.9	29.7	36.1	32.6	23.2	22.8	27.1	31.1	34.0	29.4	24.2	23.5	24.8	25.0	25.4
55	28.4	29.5	26.5	25.9	26.1	32.4	42.3	37.7	26.9	26.0	31.5	37.6	36.4	31.6	27.4	26.9	27.8	26.2	28.8
60	29.4	32.1	30.1	29.2	28.5	34.7	46.6	42.0	30.4	29.5	35.8	42.8	37.8	33.9	30.0	30.1	29.6	26.9	31.8
65	30.4	33.7	32.9	32.4	29.9	36.2	50.6	45.5	33.0	32.3	38.9	46.1	38.8	35.7	32.1	32.4	31.1	27.1	33.6
70	30.1	35.6	34.7	34.5	31.9	37.2	53.5	48.0	35.0	34.8	41.4	49.1	39.2	36.9	33.2	33.4	32.2	27.1	35.0
75	30.0	36.4	35.5	35.9	33.4	38.3	56.0	49.6	36.9	36.9	43.4	51.0	39.4	37.2	33.5	33.9	33.4	27.2	36.0
80	30.0	36.5	36.1	36.8	34.1	38.8	58.1	51.1	38.6	38.2	45.0	52.8	39.4	37.2	33.5	34.1	33.5	27.1	36.1
85	30.0	36.3	36.6	37.5	34.7	39.2	59.0	52.0	39.2	38.8	46.1	54.0	39.3	37.2	33.5	34.2	33.5	27.0	36.2
90	30.0	36.3	36.7	37.7	34.8	39.1	59.3	52.2	39.4	39.0	46.1	54.8	39.2	36.9	33.5	33.7	33.5	26.9	35.9
95	30.1	36.3	36.8	37.7	34.9	39.1	59.0	52.3	39.4	39.1	45.9	54.7	38.8	36.3	32.8	33.0	32.9	26.5	35.4
100	30.1	36.3	35.9	37.7	34.7	38.4	58.0	51.6	38.6	38.3	45.0	53.3	38.3	36.0	32.1	32.1	32.1	26.0	34.7
105	29.8	36.5	35.3	36.9	34.0	37.3	56.2	50.1	37.2	36.7	43.4	51.5	37.4	35.4	31.5	31.9	31.7	25.7	33.7
110	29.2	36.7	34.7	35.6	32.4	36.6	53.2	48.6	35.5	34.9	41.4	49.4	37.1	34.3	30.7	30.8	30.4	25.7	32.4
115	27.4	35.4	33.0	33.5	30.6	35.5	47.6	46.4	33.1	32.3	38.4	46.2	33.5	33.1	29.0	29.1	29.1	25.7	30.6
120	25.4	33.0	30.6	30.5	28.6	33.3	41.2	42.4	30.6	29.7	34.6	42.8	29.6	30.8	26.4	26.8	27.3	25.6	27.8
125	24.0	30.6	27.0	26.9	26.1	30.9	33.0	37.8	27.4	26.5	30.8	37.5	26.1	28.4	23.5	23.8	25.3	25.4	22.8
130	22.5	27.8	23.1	23.2	23.6	28.4	24.3	32.4	23.2	22.5	26.4	31.6	22.4	26.0	20.8	20.3	22.7	24.0	20.2
135	18.3	25.0	19.7	19.7	20.4	24.5	18.6	25.6	18.9	18.8	21.7	26.3	19.8	23.0	17.7	17.3	19.9	21.6	15.9
140	15.6	20.9	16.9	15.9	17.2	20.4	11.6	19.5	14.6	14.4	16.7	21.3	16.1	19.2	14.9	14.5	16.4	18.4	13.4
145	10.2	15.5	13.8	12.4	13.5	16.2	7.44	15.3	11.0	10.2	12.0	15.6	10.7	15.0	11.8	11.3	12.5	15.4	9.47
150	8.22	9.97	9.50	8.95	9.63	11.0	5.61	10.1	7.62	7.30	8.20	10.0	7.51	10.1	8.28	8.05	8.95	10.4	5.78
155	5.44	5.69	7.05	6.19	6.78	7.22	3.67	5.61	5.02	4.45	5.35	6.52	4.68	6.62	5.78	5.12	5.53	6.05	5.01
160	3.43	3.29	4.53	4.18	4.19	4.57	2.34	3.17	2.84	2.35	3.26	3.68	2.51	3.35	3.26	3.28	3.33	3.86	3.18
165	2.03	2.01	2.27	2.26	2.28	2.33	0.92	1.59	1.10	0.92	1.50	1.93	1.34	1.17	1.67	1.43	1.67	2.02	1.34
170	0.34	0.33	0.84	0.84	0.84	0.42	0.00	0.00	0.00	0.00	0.33	0.00	0.00	0.00	0.00	0.01	0.09	0.09	0.00
175	0.00	0.00	0.00	0.00	0.00	0.00	0.00	0.00	0.00	0.00	0.00	0.00	0.00	0.00	0.00	0.00	0.00	0.00	0.00
180	0.00	0.00	0.00	0.00	0.00	0.00	0.00	0.00	0.00	0.00	0.00	0.00	0.00	0.00	0.00	0.00	0.00	0.00	0.00

C Range: 0 - 360DEG

C Interval: 15.0DEG

Test Speed: HIGH

Temperature:24.5°C

Operators:Dingmin Zhang

Test Date:2025-11-15

γ Range: 0 - 180DEG

γ Interval: 0.5DEG

Test System:EVERFINE GO-R5000_V2 SYSTEM V2.00.463

Humidity:65.0%

Test Distance:30.000m [K=0.9305]

Remarks:

LUMINOUS DISTRIBUTION INTENSITY DATA

Test:U:120.36V I:0.1553A P:10.134W PF:0.5420 Freq:60.01Hz		
Lamp Flux:323.45lx1 lm		
NAME:	TYPE:	WEIGHT:
SPEC.:	DIM.:	SERIAL No.:
MFR.:	SUR.:	Shielding Angle:

Table--2

UNIT: cd

C (DEG) \ γ (DEG)	285	300	315	330	345														
0	0.00	0.00	0.08	0.25	0.08														
5	1.41	0.87	0.84	1.34	1.17														
10	2.66	2.04	1.76	2.18	2.49														
15	3.60	2.76	2.51	2.86	3.59														
20	4.69	3.43	3.18	4.10	5.10														
25	6.69	4.77	4.35	5.44	7.27														
30	8.88	6.61	5.95	7.51	10.0														
35	12.5	9.21	8.04	9.70	13.6														
40	16.1	11.5	10.2	12.6	17.2														
45	19.8	13.7	12.5	15.2	19.4														
50	23.0	15.8	14.9	17.8	21.8														
55	25.4	17.8	17.0	20.3	24.6														
60	27.5	19.8	19.0	23.1	27.6														
65	28.9	21.1	20.6	25.0	29.0														
70	30.4	21.9	21.9	26.4	29.9														
75	30.8	22.8	22.5	27.4	30.0														
80	31.0	23.0	22.8	27.4	30.1														
85	30.9	22.9	22.8	27.3	30.1														
90	30.8	22.8	22.1	27.1	29.9														
95	30.4	22.6	21.6	27.0	29.5														
100	29.4	21.9	21.3	26.4	28.8														
105	28.5	21.4	20.2	25.4	27.8														
110	28.0	20.1	19.2	24.4	27.0														
115	26.7	19.0	18.1	23.1	26.3														
120	25.1	17.8	16.6	21.2	25.3														
125	22.7	16.2	15.1	18.7	22.5														
130	21.0	14.5	13.4	16.2	19.2														
135	17.3	12.3	11.6	13.6	16.3														
140	14.1	10.4	9.29	11.0	13.7														
145	11.8	8.23	7.11	8.38	11.2														
150	8.40	6.57	5.43	6.53	7.88														
155	5.03	4.78	4.02	4.06	4.78														
160	3.03	2.93	1.92	2.43	2.62														
165	1.25	0.99	0.66	1.16	1.25														
170	0.00	0.00	0.00	0.00	0.00														
175	0.00	0.00	0.00	0.00	0.00														
180	0.00	0.00	0.00	0.00	0.00														

C Range: 0 - 360DEG
 C Interval: 15.0DEG
 Test Speed: HIGH
 Temperature:24.5°C
 Operators:Dingmin Zhang
 Test Date:2025-11-15

γ Range: 0 - 180DEG
 γ Interval: 0.5DEG
 Test System:EVERFINE GO-R5000_V2 SYSTEM V2.00.463
 Humidity:65.0%
 Test Distance:30.000m [K=0.9305]
 Remarks: