

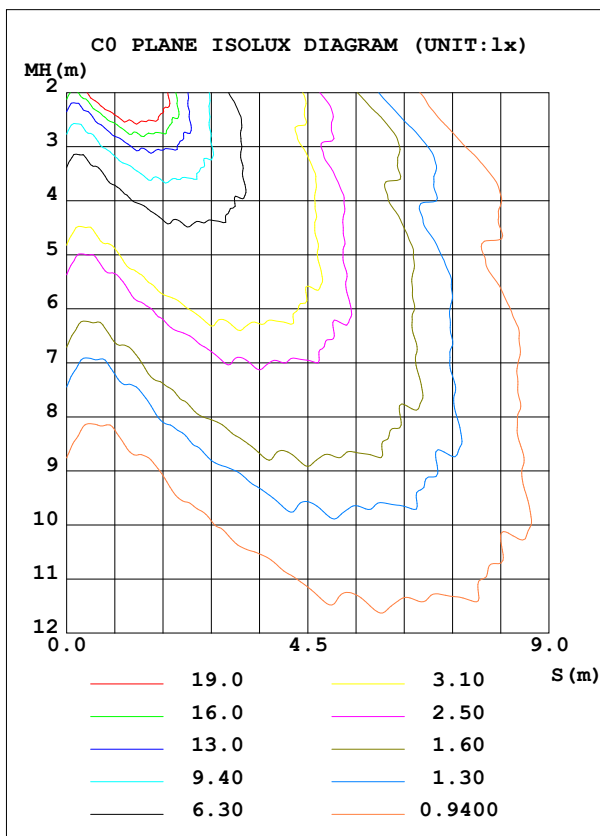
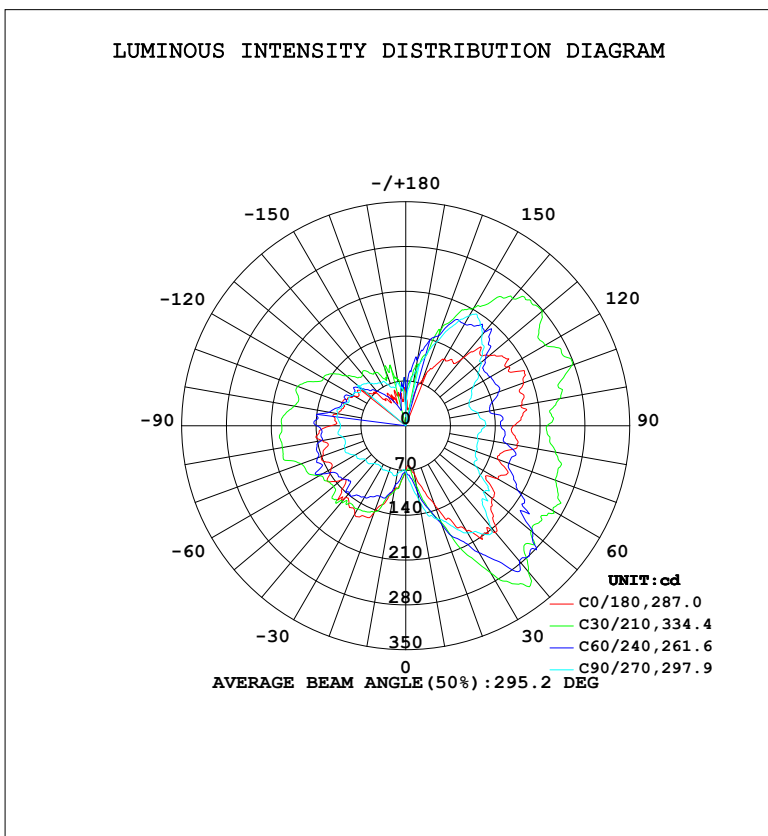
Dubai Collection  
HF7162-AGB



LUMINAIRE PHOTOMETRIC TEST REPORT

Test:U:120.20V I:0.9302A P:66.941W PF:0.5987 Freq:60.01Hz Lamp Flux:1869.27x1 lm		
NAME: Dubai Collection	TYPE:	WEIGHT:
SPEC.:	DIM.:	SERIAL No.:
MFR.: Avenue Lighting	SUR.:	Shielding Angle:

DATA OF LAMP		PHOTOMETRIC DATA			
MODEL	HF7162-AGB	Imax (cd)	351.8	S/MH (C0/180)	2.31
NOMINAL POWER (W)		LOR (%)	100.0	S/MH (C90/270)	1.60
RATED VOLTAGE (V)	120	TOTAL FLUX (lm)	1869.3	η UP, DN (C0-180)	29.0, 31.4
NOMINAL FLUX (lm)	1869.27	CIE CLASS	DIFFUSE	η UP, DN (C180-360)	18.9, 20.7
LAMPS INSIDE	1	η up (%)	47.9	CIBSE SHR NOM	0.75
TEST VOLTAGE (V)	120.191	η down (%)	52.1	CIBSE SHR MAX	0.95



C Range: 0 - 360DEG  
C Interval: 15.0DEG  
Test Speed: HIGH  
Temperature: 24.5°C  
Operators: Dingmin Zhang  
Test Date: 2025-11-15

γ Range: 0 - 180DEG  
γ Interval: 0.5DEG  
Test System: EVERFINE GO-R5000\_V2 SYSTEM V2.00.463  
Humidity: 65.0%  
Test Distance: 30.000m [K=0.9305]  
Remarks:

ZONAL FLUX DIAGRAM

ZONAL FLUX DIAGRAM:

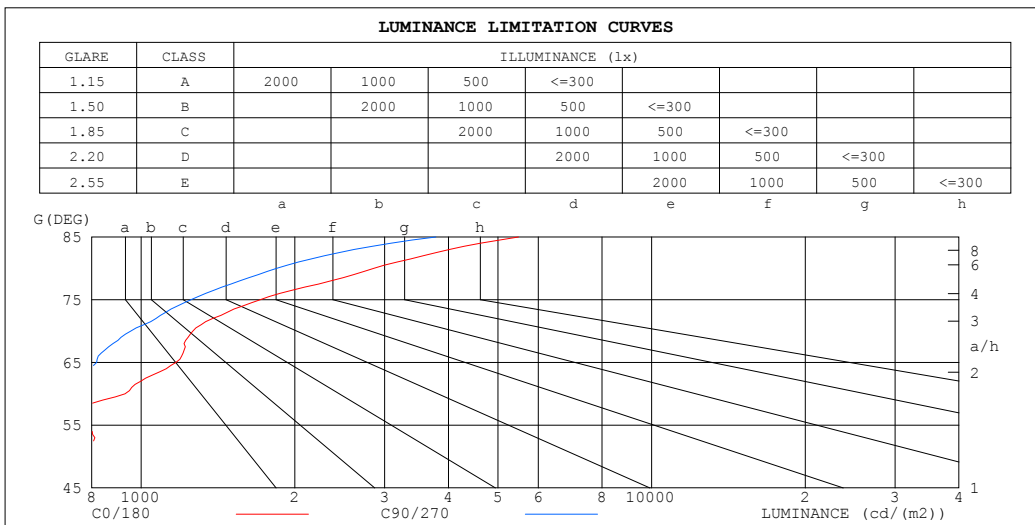
$\gamma$	C0	C45	C90	C135	C180	C225	C270	C315	$\gamma$	$\Phi$ zone	$\Phi$ total	%lum, lamp
10	75.63	99.65	117.3	107.1	102.2	102.5	77.05	80.42	0- 10	8.086	8.086	0.43,0.43
20	130.1	174.6	155.4	160.1	143.3	129.0	75.85	65.64	10- 20	32.75	40.83	2.18,2.18
30	188.7	246.0	193.8	191.3	159.7	139.4	75.39	51.98	20- 30	69.02	109.9	5.88,5.88
40	218.3	288.6	205.7	186.9	146.3	144.8	77.11	51.72	30- 40	108.8	218.6	11.7,11.7
50	176.3	257.9	159.7	164.0	133.0	121.0	82.56	56.01	40- 50	129.3	347.9	18.6,18.6
60	165.5	263.7	125.9	167.9	135.1	127.9	91.82	64.03	50- 60	141.4	489.3	26.2,26.2
70	153.8	208.1	116.2	176.1	138.3	132.4	101.1	68.46	60- 70	156.0	645.2	34.5,34.5
80	176.5	200.8	113.9	163.3	133.4	124.5	100.8	62.20	70- 80	163.9	809.1	43.3,43.3
90	168.1	182.4	125.0	157.7	117.3	122.3	102.1	72.16	80- 90	165.7	974.8	52.1,52.1
100	182.6	186.7	115.0	141.6	108.5	112.7	108.0	78.45	90-100	163.1	1138	60.9,60.9
110	195.9	198.5	105.7	144.4	105.3	132.5	101.7	81.26	100-110	159.1	1297	69.4,69.4
120	184.2	180.6	122.0	163.6	91.67	92.39	95.16	89.87	110-120	149.8	1447	77.4,77.4
130	170.2	188.5	154.0	176.9	81.61	85.31	98.92	87.14	120-130	135.9	1583	84.7,84.7
140	136.7	221.8	185.3	200.0	54.12	54.59	86.63	94.28	130-140	116.6	1699	90.9,90.9
150	119.1	180.0	198.2	154.2	58.49	42.60	77.21	88.43	140-150	88.43	1788	95.6,95.6
160	75.81	136.4	138.8	92.41	39.10	43.06	63.98	78.45	150-160	52.65	1840	98.5,98.5
170	26.50	106.3	85.24	44.78	49.18	68.00	67.39	60.30	160-170	23.33	1864	99.7,99.7
180	48.09	46.62	14.12	17.02	51.42	61.02	26.01	17.45	170-180	5.526	1869	100,100
DEG	LUMINOUS INTENSITY:cd									UNIT:lm		

C Range: 0 - 360DEG  
 C Interval: 15.0DEG  
 Test Speed: HIGH  
 Temperature:24.5°C  
 Operators:Dingmin Zhang  
 Test Date:2025-11-15

$\gamma$  Range: 0 - 180DEG  
 $\gamma$  Interval: 0.5DEG  
 Test System:EVERFINE GO-R5000\_V2 SYSTEM V2.00.463  
 Humidity:65.0%  
 Test Distance:30.000m [K=0.9305]  
 Remarks:

LUMINANCE LIMITATION CURVES

Test:U:120.20V I:0.9302A P:66.941W PF:0.5987 Freq:60.01Hz Lamp Flux:1869.27x1 lm		
NAME:	TYPE:	WEIGHT:
SPEC.:	DIM.:	SERIAL No.:
MFR.:	SUR.:	Shielding Angle:



LUMINANCE cd/(m2)		
G (DEG)	C0/180	C90/270
85	5485	3779
80	2856	1843
75	1712	1252
70	1263	954
65	1170	819
60	930	707
55	791	730
50	770	698
45	752	675

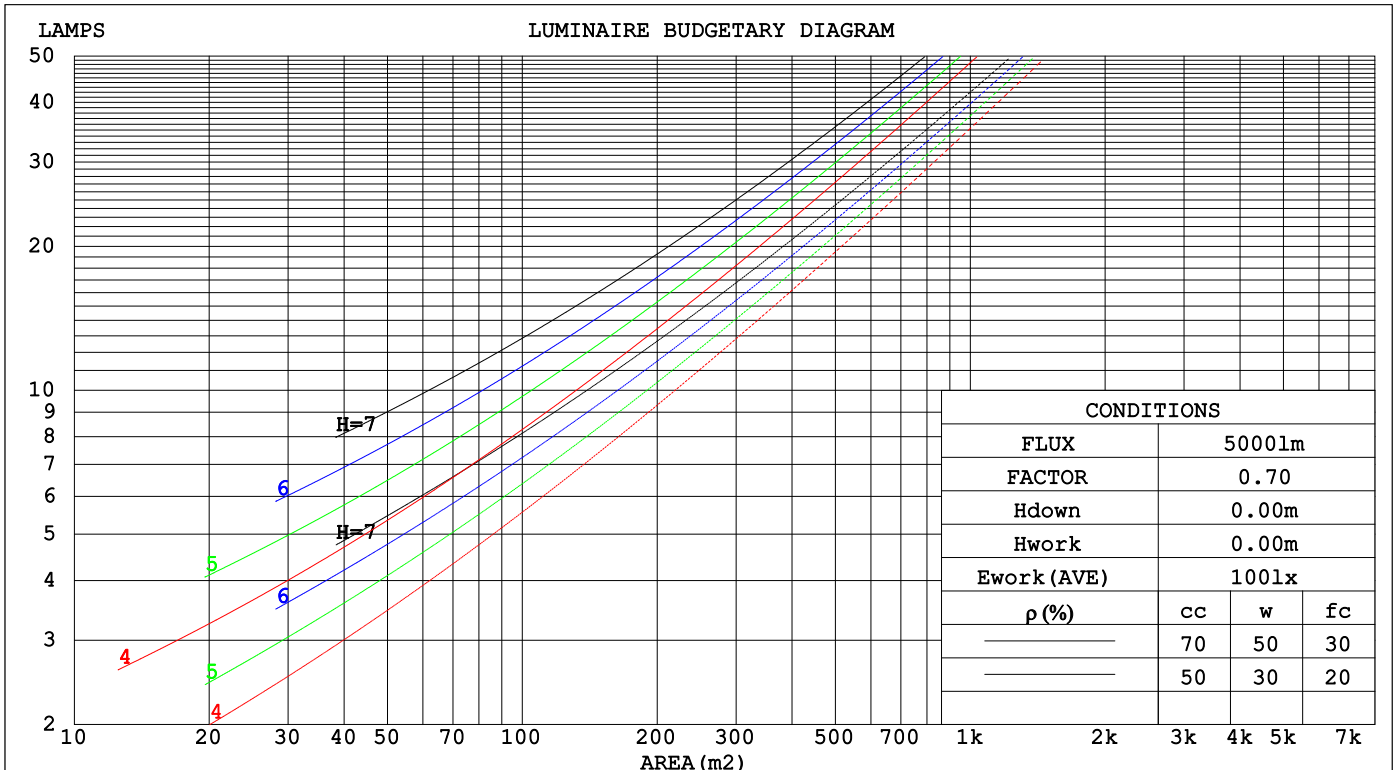
C Range: 0 - 360DEG  
 C Interval: 15.0DEG  
 Test Speed: HIGH  
 Temperature: 24.5°C  
 Operators: Dingmin Zhang  
 Test Date: 2025-11-15

γ Range: 0 - 180DEG  
 γ Interval: 0.5DEG  
 Test System: EVERFINE GO-R5000\_V2 SYSTEM V2.00.463  
 Humidity: 65.0%  
 Test Distance: 30.000m [K=0.9305]  
 Remarks:

CU AND LUMINAIRE BUDGETARY ESTIMATE DIAGRAM

Test:U:120.20V I:0.9302A P:66.941W PF:0.5987 Freq:60.01Hz		
Lamp Flux:1869.27x1 lm		
NAME:	TYPE:	WEIGHT:
SPEC.:	DIM.:	SERIAL No.:
MFR.:	SUR.:	Shielding Angle:

pcc	80%			70%			50%			30%			10%			0
pw	50%	30%	10%	50%	30%	10%	50%	30%	10%	50%	30%	10%	50%	30%	10%	0
pfc	20%			20%			20%			20%			20%			0
RCR	RCR:Room Cavity Ratio						Coefficients of Utilization(CU)									
0.0	1.08	1.08	1.08	.00	.00	.00	.85	.85	.85	.71	.71	.71	.58	.58	.58	.52
1.0	.88	.82	.77	.81	.76	.71	.68	.64	.60	.56	.53	.50	.44	.42	.40	.35
2.0	.74	.66	.60	.68	.61	.55	.57	.51	.47	.46	.42	.39	.37	.34	.31	.26
3.0	.64	.55	.48	.59	.51	.44	.49	.42	.37	.40	.35	.31	.31	.28	.24	.20
4.0	.56	.46	.39	.51	.43	.36	.42	.36	.31	.34	.29	.25	.27	.23	.20	.16
5.0	.49	.40	.33	.45	.37	.30	.37	.31	.26	.30	.25	.21	.24	.20	.17	.13
6.0	.43	.34	.28	.40	.32	.26	.33	.27	.22	.27	.22	.18	.21	.17	.14	.11
7.0	.39	.30	.24	.36	.28	.22	.30	.23	.19	.24	.19	.15	.19	.15	.12	.09
8.0	.35	.27	.21	.32	.25	.19	.27	.21	.16	.22	.17	.13	.18	.14	.11	.08
9.0	.32	.24	.18	.29	.22	.17	.25	.19	.14	.20	.15	.12	.16	.12	.09	.07
10.0	.29	.21	.16	.27	.20	.15	.23	.17	.13	.19	.14	.10	.15	.11	.08	.06



C Range: 0 - 360DEG  
 C Interval: 15.0DEG  
 Test Speed: HIGH  
 Temperature:24.5°C  
 Operators:Dingmin Zhang  
 Test Date:2025-11-15

γ Range: 0 - 180DEG  
 γ Interval: 0.5DEG  
 Test System:EVERFINE GO-R5000\_V2 SYSTEM V2.00.463  
 Humidity:65.0%  
 Test Distance:30.000m [K=0.9305]  
 Remarks:

WEC AND CCEC

Test:U:120.20V I:0.9302A P:66.941W PF:0.5987 Freq:60.01Hz								
Lamp Flux:1869.27x1 lm								
NAME:			TYPE:			WEIGHT:		
SPEC.:			DIM.:			SERIAL No.:		
MFR.:			SUR.:			Shielding Angle:		

ρ <sub>cc</sub>	80%			70%			50%			30%			10%			0
ρ <sub>w</sub>	50%	30%	10%	50%	30%	10%	50%	30%	10%	50%	30%	10%	50%	30%	10%	0
ρ <sub>fc</sub>	20%			20%			20%			20%			20%			0
RCR	RCR:Room Cavity Ratio						Wall Exitance Coefficients(WEC)									
0.0																
1.0	.400	.228	.072	.378	.216	.069	.338	.194	.062	.300	.173	.056	.266	.154	.050	
2.0	.337	.185	.057	.317	.175	.054	.280	.156	.048	.245	.138	.043	.214	.121	.038	
3.0	.295	.157	.047	.277	.148	.045	.243	.132	.040	.211	.116	.036	.182	.101	.031	
4.0	.264	.137	.040	.247	.129	.038	.216	.114	.034	.187	.100	.030	.160	.087	.026	
5.0	.238	.121	.035	.223	.115	.033	.194	.101	.030	.168	.088	.026	.143	.076	.023	
6.0	.218	.109	.031	.204	.103	.030	.177	.091	.026	.152	.079	.023	.129	.068	.020	
7.0	.200	.099	.028	.187	.093	.027	.163	.082	.024	.140	.072	.021	.118	.061	.018	
8.0	.185	.091	.025	.173	.085	.024	.151	.075	.021	.129	.065	.019	.109	.056	.016	
9.0	.172	.083	.023	.161	.079	.022	.140	.069	.020	.120	.060	.017	.101	.051	.015	
10.0	.161	.077	.021	.151	.073	.020	.131	.064	.018	.112	.056	.016	.094	.048	.014	

ρ <sub>cc</sub>	80%			70%			50%			30%			10%			0
ρ <sub>w</sub>	50%	30%	10%	50%	30%	10%	50%	30%	10%	50%	30%	10%	50%	30%	10%	0
ρ <sub>fc</sub>	20%			20%			20%			20%			20%			0
RCR	RCR:Room Cavity Ratio						Ceiling Cavity Exitance Coefficients(CCEC)									
0.0	.555	.555	.555	.474	.474	.474	.324	.324	.324	.186	.186	.186	.059	.059	.059	
1.0	.554	.523	.495	.474	.449	.426	.324	.309	.295	.187	.179	.171	.060	.058	.055	
2.0	.548	.502	.463	.470	.432	.400	.322	.299	.279	.186	.174	.164	.060	.056	.053	
3.0	.541	.487	.443	.464	.420	.384	.319	.292	.269	.184	.170	.159	.059	.055	.052	
4.0	.534	.475	.430	.458	.410	.373	.315	.286	.263	.182	.168	.156	.059	.055	.051	
5.0	.527	.466	.421	.452	.403	.366	.312	.282	.259	.181	.165	.153	.058	.054	.051	
6.0	.520	.459	.415	.447	.397	.361	.308	.278	.256	.179	.164	.152	.058	.053	.050	
7.0	.513	.452	.410	.441	.392	.357	.305	.275	.253	.177	.162	.151	.057	.053	.050	
8.0	.507	.447	.407	.436	.388	.354	.302	.272	.251	.176	.161	.150	.057	.053	.050	
9.0	.501	.443	.404	.431	.384	.352	.299	.270	.250	.174	.160	.149	.056	.052	.049	
10.0	.495	.439	.402	.427	.381	.351	.296	.268	.249	.173	.159	.149	.056	.052	.049	

C Range: 0 - 360DEG  
 C Interval: 15.0DEG  
 Test Speed: HIGH  
 Temperature:24.5°C  
 Operators:Dingmin Zhang  
 Test Date:2025-11-15

γ Range: 0 - 180DEG  
 γ Interval: 0.5DEG  
 Test System:EVERFINE GO-R5000\_V2 SYSTEM V2.00.463  
 Humidity:65.0%  
 Test Distance:30.000m [K=0.9305]  
 Remarks:

UGR(Unified Glare Rating) Table

Test:U:120.20V I:0.9302A P:66.941W PF:0.5987 Freq:60.01Hz										
Lamp Flux:1869.27x1 lm										
NAME:			TYPE:			WEIGHT:				
SPEC.:			DIM.:			SERIAL No.:				
MFR.:			SUR.:			Shielding Angle:				
ceiling/cavity	0.7	0.7	0.5	0.5	0.3	0.7	0.7	0.5	0.5	0.3
walls	0.5	0.3	0.5	0.3	0.3	0.5	0.3	0.5	0.3	0.3
working plane	0.2	0.2	0.2	0.2	0.2	0.2	0.2	0.2	0.2	0.2
Room dimensions	Viewed crosswise					Viewed endwise				
x = 2H y = 2H	12.2	13.3	13.1	14.2	15.3	9.8	10.9	10.7	11.8	12.9
3H	15.0	16.0	15.9	16.9	18.0	11.7	12.7	12.6	13.6	14.7
4H	16.4	17.3	17.3	18.2	19.4	13.1	14.0	13.9	14.9	16.1
6H	18.1	18.9	19.0	19.9	21.0	14.7	15.6	15.6	16.5	17.7
8H	19.0	19.8	19.9	20.8	22.0	15.6	16.5	16.5	17.4	18.6
12H	20.0	20.8	20.9	21.8	23.0	16.8	17.6	17.7	18.5	19.7
4H 2H	13.0	13.9	13.9	14.9	16.0	11.4	12.4	12.3	13.3	14.4
3H	16.1	16.9	17.0	17.9	19.1	13.5	14.3	14.4	15.3	16.5
4H	17.9	18.6	18.8	19.6	20.8	15.0	15.7	15.9	16.7	17.9
6H	19.8	20.5	20.8	21.5	22.7	16.6	17.3	17.6	18.2	19.5
8H	20.9	21.5	21.8	22.5	23.7	17.6	18.2	18.5	19.2	20.4
12H	22.0	22.6	22.9	23.5	24.8	18.7	19.3	19.7	20.3	21.6
8H 4H	18.4	19.0	19.3	20.0	21.3	16.3	16.9	17.2	17.9	19.1
6H	20.8	21.3	21.7	22.3	23.6	18.1	18.7	19.1	19.6	20.9
8H	22.1	22.6	23.1	23.6	24.9	19.2	19.7	20.2	20.7	22.0
12H	23.5	24.0	24.5	25.0	26.3	20.6	21.0	21.6	22.0	23.3
12H 4H	18.5	19.0	19.4	20.0	21.3	16.7	17.3	17.7	18.3	19.5
6H	21.0	21.4	22.0	22.4	23.7	18.7	19.2	19.7	20.2	21.5
8H	22.4	22.8	23.4	23.9	25.2	19.9	20.3	20.9	21.3	22.7
Variations with the observer position at spacings(CIE Pub.117):										
S = 1.0H	+ 0.1 / - 0.2					+ 0.1 / - 0.1				
1.5H	+ 0.3 / - 0.4					+ 0.2 / - 0.3				
2.0H	+ 0.5 / - 0.7					+ 0.3 / - 0.4				

CIE Pub.117, 1869 lm Total Lamp Luminous Flux Corrected (8log(F/F0) = 2.2)  
 Area: 0.356 m2

C Range: 0 - 360DEG	γ Range: 0 - 180DEG
C Interval: 15.0DEG	γ Interval: 0.5DEG
Test Speed: HIGH	Test System:EVERFINE GO-R5000_V2 SYSTEM V2.00.463
Temperature:24.5°C	Humidity:65.0%
Operators:Dingmin Zhang	Test Distance:30.000m [K=0.9305]
Test Date:2025-11-15	Remarks:

UTILIZATION FACTORS TABLE

Test:U:120.20V I:0.9302A P:66.941W PF:0.5987 Freq:60.01Hz Lamp Flux:1869.27x1 lm		
NAME:	TYPE:	WEIGHT:
SPEC.:	DIM.:	SERIAL No.:
MFR.:	SUR.:	Shielding Angle:

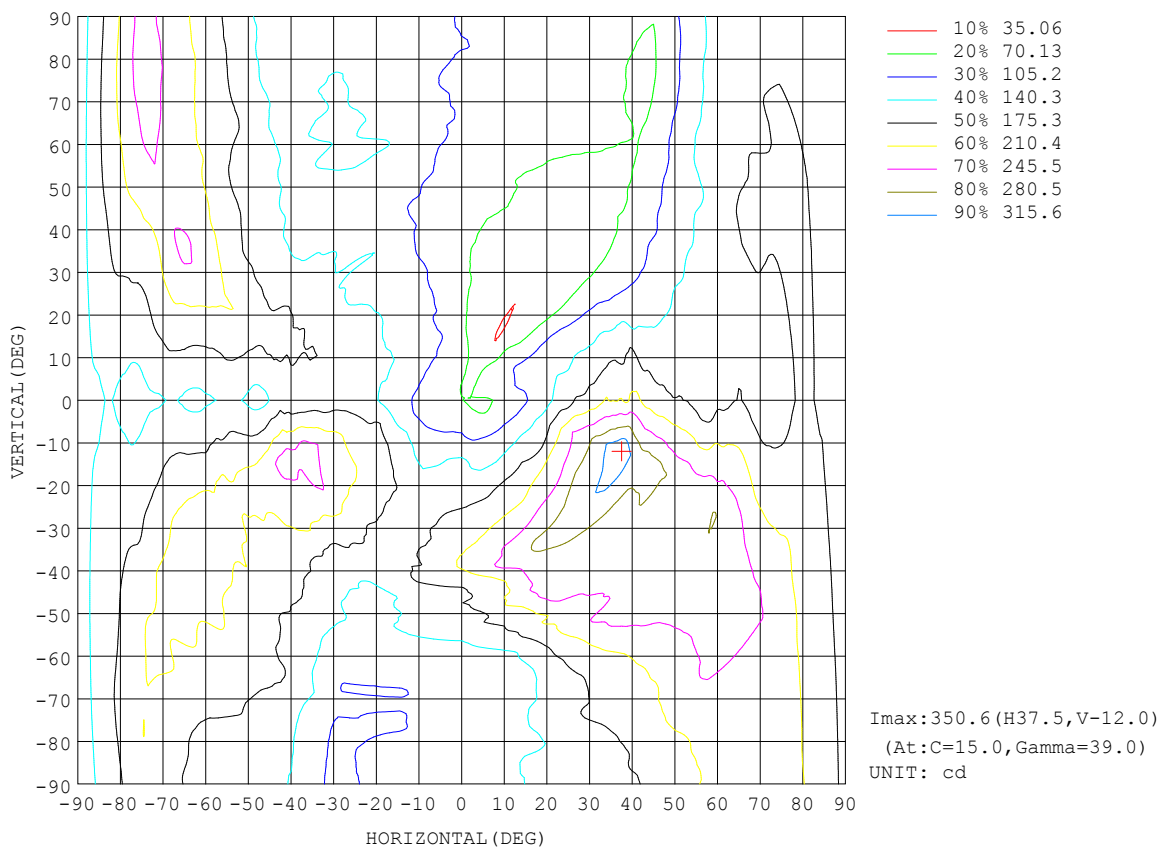
REFLECTANCE										
Ceiling	0.8	0.8	0.8	0.7	0.7	0.7	0.5	0.5	0.5	0
Walls	0.7	0.5	0.3	0.7	0.5	0.3	0.7	0.5	0.3	0
Working plane	0.2	0.2	0.2	0.2	0.2	0.2	0.2	0.2	0.2	0
ROOM INDEX	UTILIZATION FACTORS (PERCENT) k(RI) x RCR = 5									
k = 0.60	37	25	17	35	24	17	32	22	16	8
0.80	46	32	24	43	31	23	38	28	21	11
1.00	53	39	30	50	37	29	43	35	26	15
1.25	60	46	37	56	43	35	48	38	31	18
1.50	65	52	42	61	49	40	52	43	36	20
2.00	73	60	51	68	56	48	58	49	42	25
2.50	78	66	57	72	62	54	62	53	47	27
3.00	82	71	63	76	66	59	64	57	51	30
4.00	87	78	70	80	72	66	68	62	57	33
5.00	90	82	75	84	76	70	71	65	61	36
ROOM INDEX	UF(total)									Direct
According to DIN EN 13032-2 2004			Suspended				SHRNOM = 1.25			

C Range: 0 - 360DEG  
 C Interval: 15.0DEG  
 Test Speed: HIGH  
 Temperature:24.5°C  
 Operators:Dingmin Zhang  
 Test Date:2025-11-15

γ Range: 0 - 180DEG  
 γ Interval: 0.5DEG  
 Test System:EVERFINE GO-R5000\_V2 SYSTEM V2.00.463  
 Humidity:65.0%  
 Test Distance:30.000m [K=0.9305]  
 Remarks:

ISOCANDELA DIAGRAM

Test:U:120.20V I:0.9302A P:66.941W PF:0.5987 Freq:60.01Hz Lamp Flux:1869.27x1 lm		
NAME:	TYPE:	WEIGHT:
SPEC.:	DIM.:	SERIAL No.:
MFR.:	SUR.:	Shielding Angle:

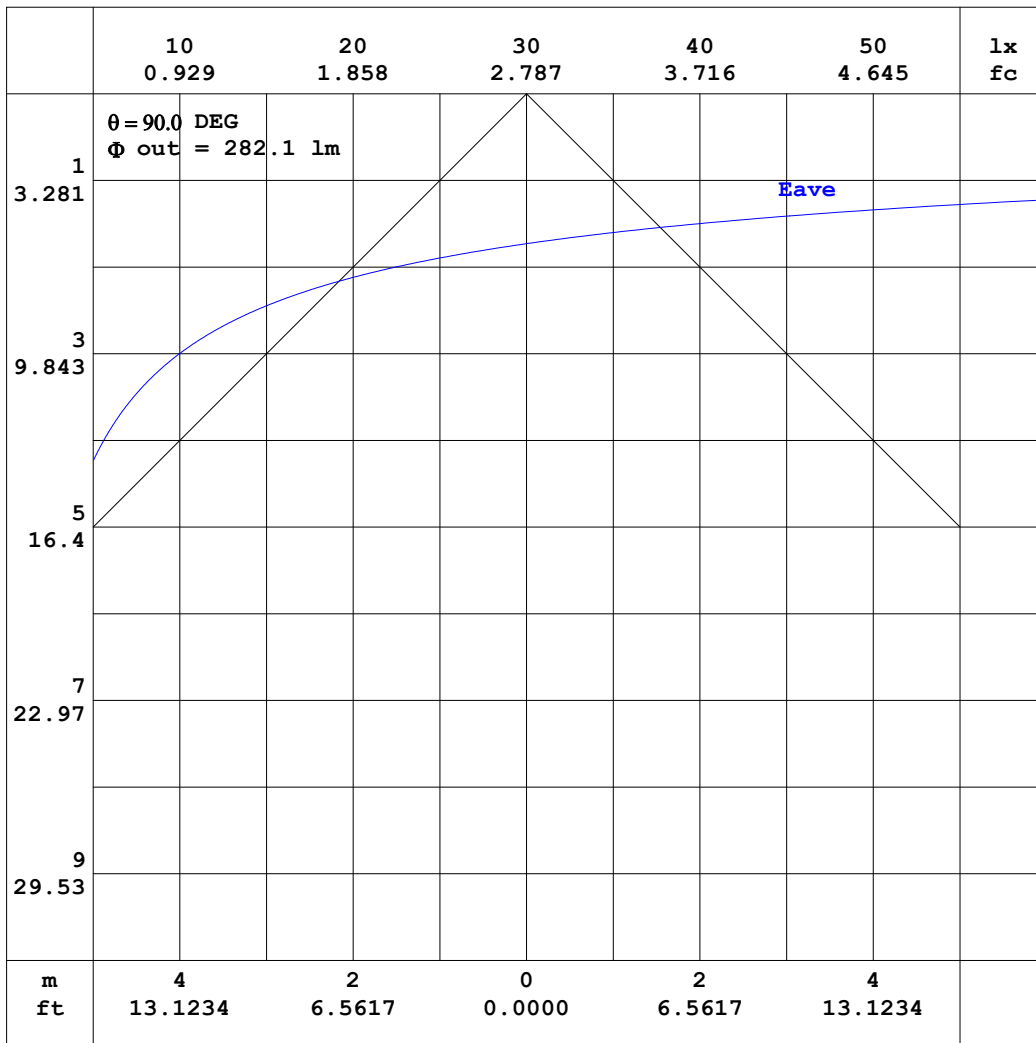


C Range: 0 - 360DEG  
C Interval: 15.0DEG  
Test Speed: HIGH  
Temperature: 24.5°C  
Operators: Dingmin Zhang  
Test Date: 2025-11-15

γ Range: 0 - 180DEG  
γ Interval: 0.5DEG  
Test System: EVERFINE GO-R5000\_V2 SYSTEM V2.00.463  
Humidity: 65.0%  
Test Distance: 30.000m [K=0.9305]  
Remarks:

AAI CURVES

Test:U:120.20V I:0.9302A P:66.941W PF:0.5987 Freq:60.01Hz		
Lamp Flux:1869.27x1 lm		
NAME:	TYPE:	WEIGHT:
SPEC.:	DIM.:	SERIAL No.:
MFR.:	SUR.:	Shielding Angle:



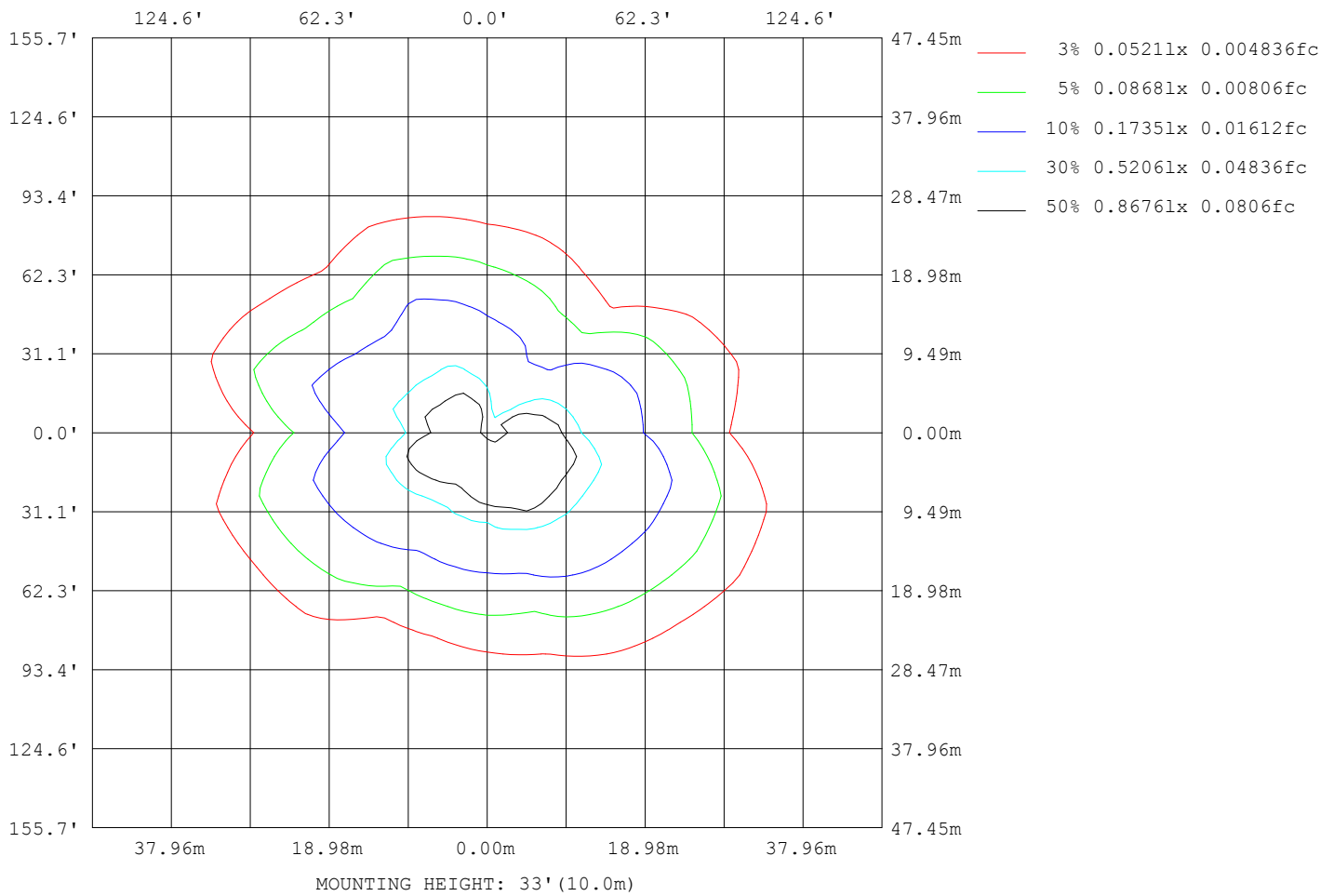
Note: The Curves indicate the illuminated area and the average illumination when the luminaire is at different distance.

C Range: 0 - 360DEG  
 C Interval: 15.0DEG  
 Test Speed: HIGH  
 Temperature: 24.5°C  
 Operators: Dingmin Zhang  
 Test Date: 2025-11-15

$\gamma$  Range: 0 - 180DEG  
 $\gamma$  Interval: 0.5DEG  
 Test System: EVERFINE GO-R5000\_V2 SYSTEM V2.00.463  
 Humidity: 65.0%  
 Test Distance: 30.000m [K=0.9305]  
 Remarks:

ISOLUX DIAGRAM

Test:U:120.20V I:0.9302A P:66.941W PF:0.5987 Freq:60.01Hz Lamp Flux:1869.27x1 lm		
NAME:	TYPE:	WEIGHT:
SPEC.:	DIM.:	SERIAL No.:
MFR.:	SUR.:	Shielding Angle:



C Range: 0 - 360DEG  
C Interval: 15.0DEG  
Test Speed: HIGH  
Temperature:24.5°C  
Operators:Dingmin Zhang  
Test Date:2025-11-15

γ Range: 0 - 180DEG  
γ Interval: 0.5DEG  
Test System:EVERFINE GO-R5000\_V2 SYSTEM V2.00.463  
Humidity:65.0%  
Test Distance:30.000m [K=0.9305]  
Remarks:

## LED Avg.L Report

Test:U:120.20V I:0.9302A P:66.941W PF:0.5987 Freq:60.01Hz Lamp Flux:1869.27x1 lm		
NAME:	TYPE:	WEIGHT:
SPEC.:	DIM.:	SERIAL No.:
MFR.:	SUR.:	Shielding Angle:

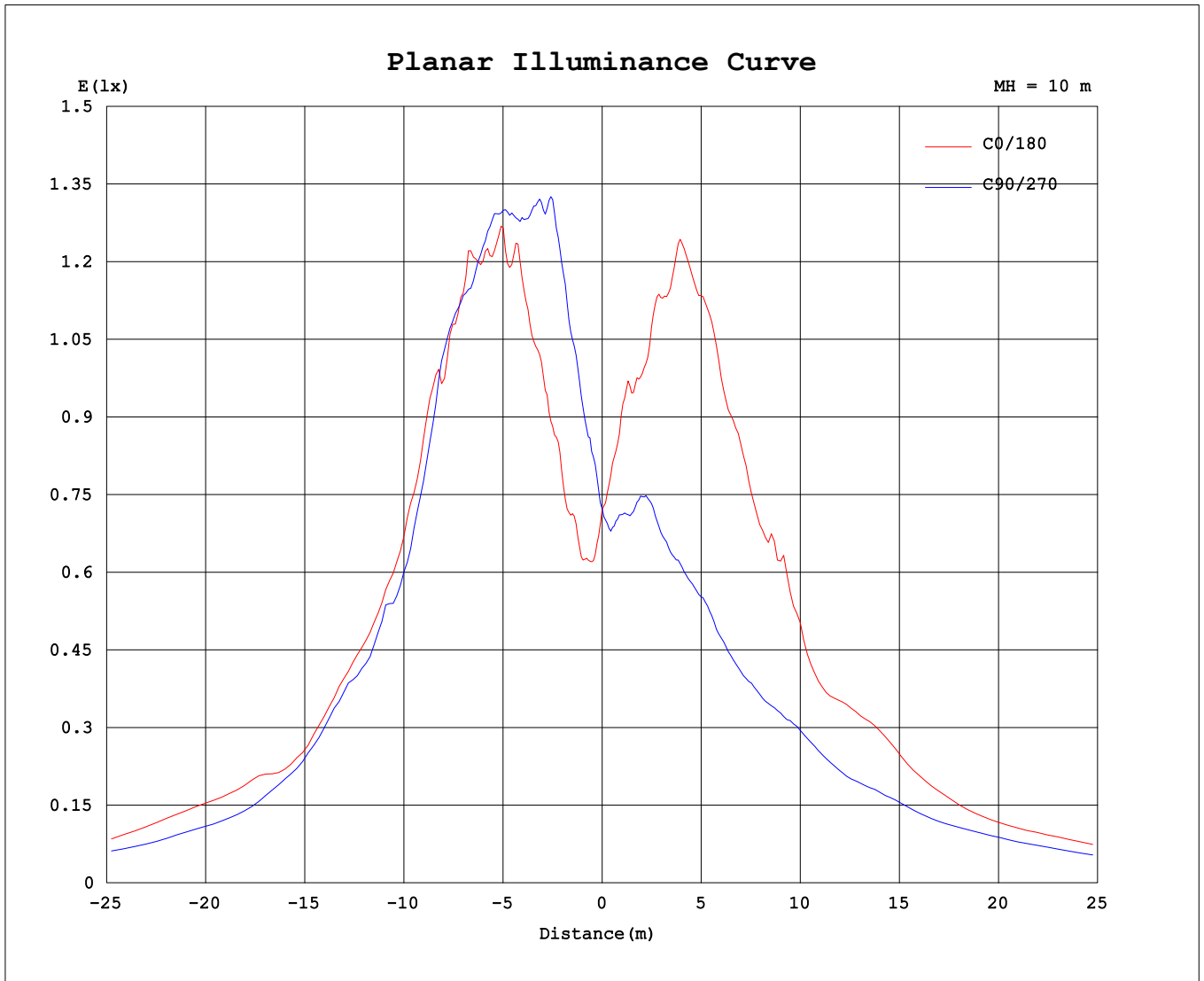
AvgL	cd/m2
L_0~180 (65) av	1031
L_0~180 (75) av	1549
L_0~180 (85) av	4935
L_90~270 (65) av	744
L_90~270 (75) av	1157
L_90~270 (85) av	3593
L_45 (65) av	981
L_45 (75) av	1520
L_45 (85) av	4331

Standard: GB/T 29293-2012

C Range: 0 - 360DEG  
C Interval: 15.0DEG  
Test Speed: HIGH  
Temperature:24.5°C  
Operators:Dingmin Zhang  
Test Date:2025-11-15

$\gamma$  Range: 0 - 180DEG  
 $\gamma$  Interval: 0.5DEG  
Test System:EVERFINE GO-R5000\_V2 SYSTEM V2.00.463  
Humidity:65.0%  
Test Distance:30.000m [K=0.9305]  
Remarks:

Planar Illuminance Curve



C Range: 0 - 360DEG  
C Interval: 15.0DEG  
Test Speed: HIGH  
Temperature: 24.5°C  
Operators: Dingmin Zhang  
Test Date: 2025-11-15

γ Range: 0 - 180DEG  
γ Interval: 0.5DEG  
Test System: EVERFINE GO-R5000\_V2 SYSTEM V2.00.463  
Humidity: 65.0%  
Test Distance: 30.000m [K=0.9305]  
Remarks:

LUMINOUS DISTRIBUTION INTENSITY DATA

Test:U:120.20V I:0.9302A P:66.941W PF:0.5987 Freq:60.01Hz		
Lamp Flux:1869.27x1 lm		
NAME:	TYPE:	WEIGHT:
SPEC.:	DIM.:	SERIAL No.:
MFR.:	SUR.:	Shielding Angle:

Table--1

UNIT: cd

C (DEG) \ γ (DEG)	0	15	30	45	60	75	90	105	120	135	150	165	180	195	210	225	240	255	270
0	72.1	72.2	71.8	72.3	71.9	72.4	72.3	72.5	72.4	72.2	71.4	70.9	72.1	72.2	71.8	72.3	71.9	72.4	72.3
5	63.2	64.2	67.5	73.8	81.1	84.1	90.8	93.4	90.5	85.7	82.0	77.3	87.8	89.6	88.2	85.4	80.6	75.5	71.9
10	75.6	84.3	95.0	99.7	105	107	117	117	112	107	101	96.5	102	103	104	102	94.1	89.5	77.0
15	101	119	132	135	133	133	146	141	123	135	142	129	124	117	117	112	113	103	78.8
20	130	157	158	175	163	157	155	158	148	160	175	176	143	144	144	129	118	99.5	75.9
25	160	221	219	210	196	184	173	164	160	187	191	195	156	163	148	137	123	104	76.7
30	189	269	266	246	229	210	194	172	158	191	216	217	160	165	150	139	129	103	75.4
35	207	312	302	286	262	238	206	175	163	185	235	245	154	174	149	132	132	98.8	74.3
40	218	340	297	289	276	250	206	176	163	187	236	256	146	190	154	145	137	99.2	77.1
45	189	301	263	273	275	208	170	171	147	167	231	250	142	195	161	139	122	102	83.4
50	176	283	256	258	260	194	160	148	129	164	204	222	133	195	147	121	129	110	82.6
55	162	277	259	247	232	177	149	145	127	171	197	220	150	207	151	123	131	119	89.7
60	166	279	266	264	202	140	126	122	117	168	206	226	135	219	157	128	150	127	91.8
65	176	277	262	226	185	124	123	113	111	168	203	236	134	239	170	131	144	122	101
70	154	259	249	208	172	130	116	104	104	176	208	239	138	255	174	132	147	122	101
75	158	248	249	199	178	137	115	104	106	167	198	229	128	236	198	131	145	118	97.9
80	177	241	238	201	159	133	114	110	99.3	163	186	224	133	246	196	125	134	131	101
85	170	233	226	186	156	142	117	121	97.3	163	163	210	136	262	198	123	132	134	106
90	168	234	221	182	148	140	125	118	96.4	158	161	201	117	261	194	122	139	131	102
95	183	254	227	186	152	139	120	107	92.7	152	157	202	111	251	191	112	138	136	106
100	183	255	244	187	133	132	115	103	88.9	142	154	206	109	261	178	113	122	129	108
105	190	262	246	190	139	134	105	111	99.9	150	169	218	103	265	174	119	109	120	106
110	196	281	276	199	155	146	106	108	103	144	167	240	105	238	180	132	106	117	102
115	204	278	269	196	155	135	114	102	103	146	178	249	100	217	164	106	106	126	98.7
120	184	282	252	181	153	145	122	115	112	164	190	257	91.7	207	149	92.4	95.0	121	95.2
125	187	281	254	167	150	164	138	138	135	166	198	252	90.6	208	142	88.1	97.1	108	90.3
130	170	269	279	189	163	168	154	155	143	177	207	246	81.6	195	122	85.3	90.2	113	98.9
135	164	247	276	198	183	179	173	167	154	197	223	244	71.1	161	106	68.5	77.5	86.6	92.7
140	137	246	260	222	191	191	185	185	182	200	248	266	54.1	154	106	54.6	71.0	80.2	86.6
145	126	228	241	194	191	200	201	186	170	185	201	218	51.0	133	103	48.9	60.2	68.4	80.4
150	119	207	213	180	184	205	198	167	146	154	162	179	58.5	114	95.1	42.6	50.2	60.7	77.2
155	99.5	183	193	169	183	177	171	146	120	118	130	141	53.5	108	81.2	39.2	39.7	56.3	73.9
160	75.8	133	153	136	150	153	139	120	100	92.4	98.8	103	39.1	97.5	96.4	43.1	29.9	46.0	64.0
165	51.1	80.1	115	121	135	122	108	101	75.8	68.4	67.2	73.3	49.0	61.0	98.0	59.3	26.9	39.9	62.8
170	26.5	40.0	97.1	106	104	107	85.2	74.6	57.3	44.8	43.6	42.1	49.2	52.3	75.3	68.0	44.8	55.5	67.4
175	29.7	42.6	67.0	89.7	86.2	70.5	60.6	53.1	40.3	34.9	25.1	26.5	40.2	41.3	56.0	65.3	62.8	63.2	59.2
180	48.1	53.9	58.7	46.6	25.5	16.2	14.1	16.4	17.5	17.0	17.5	18.8	51.4	52.9	56.6	61.0	55.7	42.0	26.0

C Range: 0 - 360DEG  
 C Interval: 15.0DEG  
 Test Speed: HIGH  
 Temperature:24.5°C  
 Operators:Dingmin Zhang  
 Test Date:2025-11-15

γ Range: 0 - 180DEG  
 γ Interval: 0.5DEG  
 Test System:EVERFINE GO-R5000\_V2 SYSTEM V2.00.463  
 Humidity:65.0%  
 Test Distance:30.000m [K=0.9305]  
 Remarks:

LUMINOUS DISTRIBUTION INTENSITY DATA

Test:U:120.20V I:0.9302A P:66.941W PF:0.5987 Freq:60.01Hz Lamp Flux:1869.27x1 lm		
NAME:	TYPE:	WEIGHT:
SPEC.:	DIM.:	SERIAL No.:
MFR.:	SUR.:	Shielding Angle:

Table--2

UNIT: cd

C (DEG) \ γ (DEG)	285	300	315	330	345														
0	72.5	72.4	72.2	71.4	70.9														
5	66.2	66.6	71.2	75.0	77.6														
10	66.0	61.2	80.4	90.4	94.8														
15	52.6	36.5	80.1	109	109														
20	50.7	32.2	65.6	111	132														
25	50.5	34.6	59.8	122	139														
30	54.9	37.6	52.0	118	154														
35	57.8	41.0	51.2	115	166														
40	61.4	44.9	51.7	108	171														
45	67.7	47.7	52.1	102	150														
50	71.8	53.9	56.0	103	146														
55	74.7	55.8	60.7	112	157														
60	82.5	67.6	64.0	119	164														
65	89.6	75.6	66.0	130	168														
70	95.1	84.2	68.5	137	170														
75	96.0	83.3	62.6	151	183														
80	103	82.8	62.2	152	178														
85	92.4	82.9	65.7	157	178														
90	97.6	82.8	72.2	156	165														
95	102	81.0	75.6	154	158														
100	111	90.8	78.4	152	163														
105	106	90.1	80.1	150	163														
110	102	95.2	81.3	138	165														
115	109	101	83.7	127	161														
120	120	99.7	89.9	120	149														
125	113	106	94.7	120	144														
130	107	100	87.1	116	129														
135	97.9	97.8	91.0	105	119														
140	90.9	93.0	94.3	98.9	113														
145	95.9	91.9	86.8	103	115														
150	93.2	86.7	88.4	95.1	114														
155	89.5	82.4	77.7	88.3	102														
160	76.7	78.6	78.4	89.8	98.4														
165	76.3	78.0	79.8	78.4	83.6														
170	72.0	66.3	60.3	70.8	72.2														
175	51.3	46.5	50.5	52.5	46.3														
180	19.4	18.1	17.4	18.4	20.7														

C Range: 0 - 360DEG  
 C Interval: 15.0DEG  
 Test Speed: HIGH  
 Temperature:24.5°C  
 Operators:Dingmin Zhang  
 Test Date:2025-11-15

γ Range: 0 - 180DEG  
 γ Interval: 0.5DEG  
 Test System:EVERFINE GO-R5000\_V2 SYSTEM V2.00.463  
 Humidity:65.0%  
 Test Distance:30.000m [K=0.9305]  
 Remarks: